



RUTH, HOFER

BROKEN DOWN DOWIE LEAVES BATTLE TO HIS LAWYERS.

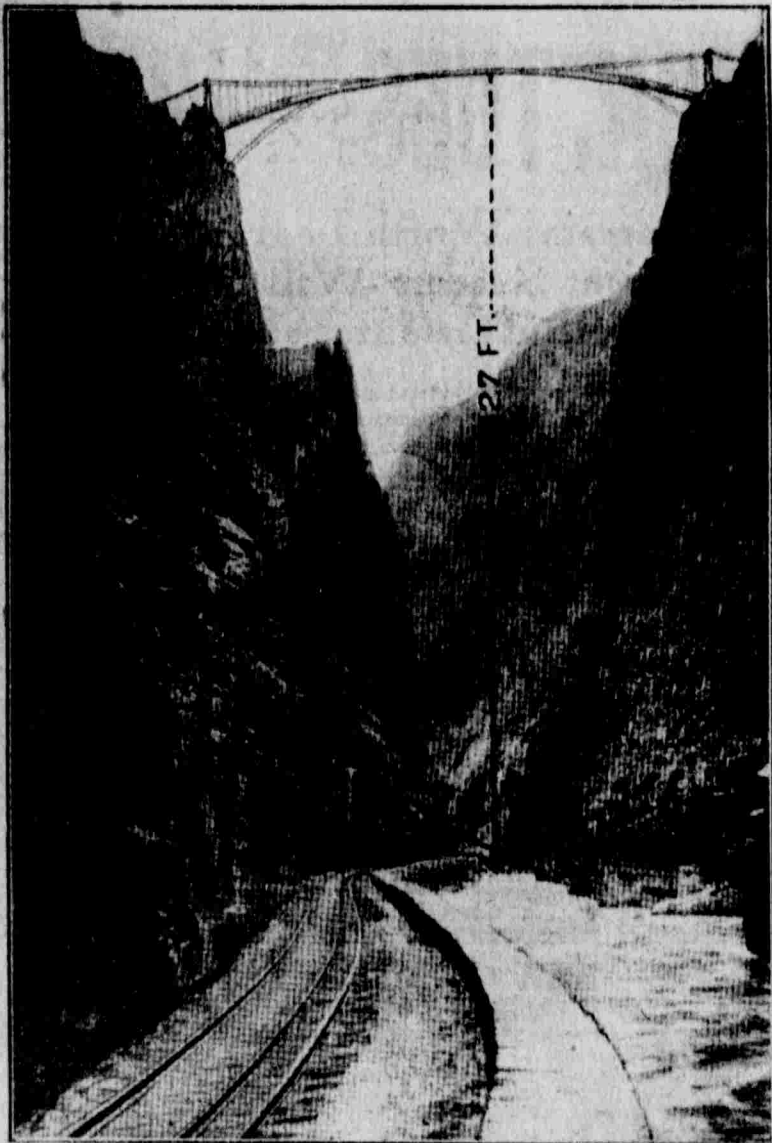
Weak and sick, John Alexander Dowie returned to Chicago last week to begin his fight to retain control of his religious commonwealth, the management of which is now in the hands of Dowie's successor, Overseer Voliva, and the latter's followers, most of whom were formerly Dowie's enthusiastic champions. The returned traveler was Dowie, but not John Alexander, erstwhile general overseer of the Christian Catholic church in Zion. It was far from being the man who by the power of personal magnetism had drawn tens of thousands to his creed and a score of millions to his cause, had founded a city and spread his teachings to the ends of the earth.

His glory had departed, his health and strength had failed, his fighting spirit is in eclipse. Where once his voice thundered invective at his foes, now in trembling tones he says his affairs were in the hands of his legal advisers. Where once he scorned attack, he now fears to visit the city he founded and sought peace and quiet in a hotel in Chicago. The battle, which will be a legal one, for the control of Zion City and its 5,000 people, promises to be long and bitter.

One of the features of the contest will be Dowie's domestic disruption, which has enraged Mrs. Dowie and her son Gladstone against him, following the disclosures regarding a batch of letters written by Dowie to Miss Ruth Hofer, the Swiss heiress who for some time has been under the aged man's spell. In one of these letters now in possession of the younger Dowie, "My little lump of gold," was the term of endearment he used toward Miss Hofer. "I want to hear again your expressions of faith, for they give me new hope in the womanhood of Zion," he writes. "Child of my heart, the devil is at work. He has stolen into my home. Fear not harsh words of women possessed of evil thoughts. The Lord sent you unto me. He spoke to me instructions. You were sent to the apostle and first priest. Am always yours and until the worms eat into my body."

JOHN ALEXANDER.

The letters, it is believed, will be used by Voliva as one of his chief weapons to effect Dowie's permanent exile.



HIGHEST SUSPENSION BRIDGE IN THE WORLD.

Plan to Cross the Royal Gorge Near Where the Famous "Hanging Bridge" Crosses the Arkansas.

From now on the people of the east are going to hear of vast improvements in the west, built to make western wonderland scenery available to luxurious travelers, and Salt Lake has the pride of ancestry in this movement, because it had its inception in the "See America" conference, held in Commercial club building of this city.

The first result of that conference, in the way of big improvements, is a suspension bridge over Colorado's Royal Gorge, to carry street cars across the chasm to a hotel site, where an immense modern structure is to be erected. The first news of the plans for the big bridge was brought to Salt Lake by a delegate to the convention, who afterwards revisited the city.

The bridge, which is to be the highest in the world, is to be built by the Canon City, Florence, Royal Gorge & Interurban Railway company. This bridge will span the famous Royal Gorge at a point directly above the

hanging bridge of the Denver & Rio Grande railroad, and will be over 2,000 feet above the bed of the roaring Arkansas river, so high, in fact, that that stream will look like a silver thread to a person standing on the structure. The bridge will be of the suspension pattern and be built of solid steel and have a length of 100 feet. It will cost fully \$100,000. The fact that the bridge is to be built over this bit of mountain scenery is already causing considerable comment in the east and no doubt when it is finished thousands of easterners will visit the bridge annually. The street cars are to run over the bridge and the sight down the deep chasm from the street cars will be a dazzling one. Near the bridge is to be located a \$300,000 hotel.

The highest railway bridge in the United States at the present time, it is said, is the "highbridge" of Kentucky, which spans the Kentucky river in Jessamine county at a height of 350 feet.

Device for Sending Harmonious Vibrations Through a City.

THE telharmonium has arrived. It is an invention for producing music by electricity without strings, reeds or pipes—nothing but an ordinary telephone wire. The idea is that you can turn on music hereafter in your house just as you turn on an incandescent electric light. The music is transmitted over a wire in electric waves from a central station. It is produced, not reproduced, it each telephone. You don't have to put the receiver to your ear to hear it. You let the waves into the paper

cone, and the sound that rolls out will fill a great auditorium. The inventor says the music can be produced a thousand miles from the place where the performer is depressing the piano keys that set the currents going, and the performer has to have one of the cones in the room with him to see if he is playing the music right. The inventor is Dr. Cahill, whose workshop is in Holyoke, Mass., where he has assembled a machine weighing 200 tons and costing \$250,000, after many years of work. The Electric World of this week tells the details of the construction of the apparatus and the results obtained. The plan is to

set up a central station and supply each large city with music waves built up into harmonies, and the imitation of the most delicate of all musical instruments in any kind of musical composition to amusement halls, stores, auditoriums or private houses, for all those who can pay for it. It is not to be like the phonograph in any way, because the tones come out of the wire in their original form.

A generating apparatus of alternators of different frequencies is provided. The performer presses a key and produces what is called the ground tone. Other harmonies are added to the ground tone, and thus, by building up a process of tones the human voice, brass instruments, the violin, the cello, the flute, clarinet and other tones are produced so accurately, it is said, that they seem to have been made by the real instruments. A correspondent of the Electrical World has been up to Holyoke to see how the machine works. He writes:

"The system of mixing with the ground one or many harmonies, with any strength desired, opens up a new field of timbre. The sound of wind, brass and string tones of the orchestra are easily produced by making harmonies in the required proportions. A musician in Dr. Cahill's laboratory showed our staff correspondent that a mere ground tone with the third or fourth harmonies, of suitable strength, produces a clear, pure flute note, a ground tone with the third or fourth harmonies, of suitable strength, produces the sound of a clarinet, while to imitate the violin all the harmonies up to the eighth were necessary. Another combination of harmonies, in which the seventh and eighth are strong, gives the characteristic blare of brass. In addition to producing the leading orchestral tones, a skilled performer can mix the harmonies so as to produce musical timbres unknown heretofore. These qualities are a striking feature of the electrical music."

It is declared that the intonation is remarkably fine, and that the most delicate diminuendos and powerful crescendos are produced. The central plant in Holyoke has 145 direct-coupled inductor alternators in use. These are arranged in eight sections, each inductor mounted on an 11-inch steel shaft. The bed plate of the machine is built up on 18-inch steel girders, on brick piers, and is more than 80 feet long. The switchboards are in 10 sections and contain nearly 2,000 switches, controlled by electric magnetic action from a keyboard. One of these machines is declared to be in active operation in Holyoke, and another is building. One will be put in operation in this city in the coming summer.

The Electrical World reassures musicians in this way:

"No matter how much we may industrialize and commercialize at present, there will, of course, always be a demand for the original individual, separate and exclusive work of an artist."—New York Sun.

No Pill is as pleasant and positive as DeWitt's Little Early Risers. These Famous Little Pills are so mild and effective that children, delicate ladies and weak people enjoy their cleansing effect, while strong people say they are the best liver pills sold. Never again sold by P. C. Schramm, druggist, where the cars stop.

Passengers east from Chicago to Fort Wayne, Findlay, Portola, Cleveland, Erie, Buffalo, New York City, Boston and all points east will consult their interests and find advantage in selecting the Nickel Plate Road east from Chicago. Three through trains are run daily, with through day coaches to New York City, and modern Pullman sleeping cars to destination. Rates always the lowest, and no excess fares are charged on any train, for any part of the journey. Modern dining cars, with individual club meals, ranging in price from 35 cents to \$1; also meals a la carte. Ask for tickets via the Nickel Plate Road, Chicago depot, La Salle and Van Buren streets, the only station in Chicago on the Elevated Loop. Chicago City Ticket Office, 111 Adams street. Detailed information may be secured by addressing Charles E. Johnson, district passenger agent, No. 811 Seventeenth street, Denver, Colorado.

WALKER'S STORE

SILKS

Jump at this chance! It's the silk opportunity of the year.

Many pieces, delayed shipments, have arrived this week. Too late for the opening of the season. They must go at once or we are "stuck."

Hundreds of especially fine pieces from the stock on hand have been added, making a wonderful aggregation of silks. They're worth up to \$2.00 the yard—this week, yours at

85 cts

Warp prints, pompadours and Dresden, \$1.25 and \$1.50 the yard. Yours this week at the

85c

Finest quality of shower proof foulards in the very newest shades, worth \$1.50 the yard. Yours

85c

Newest designs and colorings of checks, stripes and shadow checks in Louisiana, messaline and chiffon taffetas worth \$1.25, \$1.50, \$1.75 and \$2

85c

Chiffon moire antique in the newest ideas, worth \$1.75 the yard, yours this week at the yard

85c

Considering the kinds, values and timeliness of the sale, it's the offer of the season. Come Monday, come any day this week. But you're more certain of a good selection Monday.

A \$40,000.00 stock of linens and white goods to be turned loose this week at reductions truly marvelous

They are all of the finest varieties—every yard, every piece, every set, selected by a trained eye that knows values and knows what's wanted in Salt Lake City.

Included are goods from such famous mills as John S. Brown & Sons, and Anton Weidel, the great French linen maker.

We print this list of price reductions for the benefit of the most critical and sceptical Come Monday. Bring this ad. Every word bona fide.

To start it, here are 750 fine table linen sets (pattern cloths and napkins to match.)

Size 2 by 2.	Size 2 by 2 1/2.	Size 2 1/2 by 2 1/2.
\$10.00 quality.....\$7.00	\$10.00 quality.....\$7.00	\$12.50 quality.....\$9.00
\$15.00 quality.....\$10.00	\$15.00 quality.....\$10.00	\$18.50 quality.....\$13.00
\$20.00 quality.....\$14.50	\$25.00 quality.....\$18.50	\$25.00 quality.....\$18.50
\$25.00 quality.....\$18.50	\$35.00 quality.....\$25.00	\$40.00 quality.....\$30.00
Size 2 1/2 by 2 1/2.	Size 2 1/2 by 3.	Size 2 1/2 by 4.
\$20.00 quality.....\$15.00	\$25.00 quality.....\$18.50	\$35.00 quality.....\$25.00
\$30.00 quality.....\$22.00	\$35.00 quality.....\$25.00	\$50.00 quality.....\$35.00
\$40.00 quality.....\$30.00	\$50.00 quality.....\$35.00	\$75.00 quality.....\$50.00

Plain English nainsook reductions.

20c quality	15c	35c quality	25c
25c quality	20c	50c quality	38c
50c quality	5c		

French Nainsooks 40 inches Wide.

75c quality	59c	80c quality	69c
1.00 quality			

French lingerie fabric for fine underwear.

50c quality	30c	55c quality	45c
-------------	-----	-------------	-----

Bleached table linens cut like this:

64 inch—65c quality	45c	72 inch—\$1.25 quality	\$1.00
72 inch—85c quality	69c	72 inch—\$1.50 quality	\$1.10
72 inch—\$1.00 quality	75c	72 inch—\$2.00 quality	\$1.59

Unbleached table linens at these reductions:

64 inch—65c quality	45c	72 inch—\$1.50 quality	\$1.05
72 inch—\$1.00 quality	69c	72 inch—\$1.75 quality	\$1.25

Napkins to match all table linens from \$1.00 the yard and up.

500 dozen napkins at these prices:

\$1.00 kind, per dozen	75c	\$2.50 kind, per dozen	\$2.75
\$1.50 kind, per dozen	\$1.10	\$3.50 kind, per dozen	\$3.50
\$2.00 kind, per dozen	\$1.50	\$4.00 kind, per dozen	\$5.00
\$2.50 kind, per dozen	\$2.00	\$5.00 kind, per dozen	\$5.50

1000 bolts of English long cloth in three lots—

Lot No. 1—Imperial long cloth, 36 inches wide. Worth \$2.00 per bolt of 12 yards. Special	\$1.25
Lot No. 2—Imperial long cloth, 36 inches wide. Worth \$2.00 per bolt of 12 yards. Special	\$1.69
Lot No. 3—Imperial long cloth, 36 inches wide. Worth \$2.00 per bolt of 12 yards. Special	\$2.00

Bath towels way under price.

12c towels	12c	30c towels	23c
16 2-3c towels	13c	40c towels	30c
25c towels	20c	50c towels	43c
			55c

White wash fabrics reduced as follows:

INDIA LINONS.	PERSIAN LAWNS.
30c quality, per yard	25c grade, at the
12c quality, per yard	35c grade, at the
16 2-3c quality, per yard	45c grade, at the
20c quality, per yard	50c grade, at the
25c quality, per yard	75c grade, at the
30c quality, per yard	80c grade, at the
35c quality, per yard	90c grade, at the
40c quality, per yard	1.00 grade, at the
45c quality, per yard	1.10 grade, at the
50c quality, per yard	1.20 grade, at the
55c quality, per yard	1.30 grade, at the
60c quality, per yard	1.40 grade, at the
65c quality, per yard	1.50 grade, at the
70c quality, per yard	1.60 grade, at the
75c quality, per yard	1.70 grade, at the
80c quality, per yard	1.80 grade, at the
85c quality, per yard	1.90 grade, at the
90c quality, per yard	2.00 grade, at the
95c quality, per yard	2.10 grade, at the
1.00 quality, per yard	2.20 grade, at the
1.10 quality, per yard	2.30 grade, at the
1.20 quality, per yard	2.40 grade, at the
1.30 quality, per yard	2.50 grade, at the
1.40 quality, per yard	2.60 grade, at the
1.50 quality, per yard	2.70 grade, at the
1.60 quality, per yard	2.80 grade, at the
1.70 quality, per yard	2.90 grade, at the
1.80 quality, per yard	3.00 grade, at the
1.90 quality, per yard	3.10 grade, at the
2.00 quality, per yard	3.20 grade, at the
2.10 quality, per yard	3.30 grade, at the
2.20 quality, per yard	3.40 grade, at the
2.30 quality, per yard	3.50 grade, at the
2.40 quality, per yard	3.60 grade, at the
2.50 quality, per yard	3.70 grade, at the
2.60 quality, per yard	3.80 grade, at the
2.70 quality, per yard	3.90 grade, at the
2.80 quality, per yard	4.00 grade, at the
2.90 quality, per yard	4.10 grade, at the
3.00 quality, per yard	4.20 grade, at the
3.10 quality, per yard	4.30 grade, at the
3.20 quality, per yard	4.40 grade, at the
3.30 quality, per yard	4.50 grade, at the
3.40 quality, per yard	4.60 grade, at the
3.50 quality, per yard	4.70 grade, at the
3.60 quality, per yard	4.80 grade, at the
3.70 quality, per yard	4.90 grade, at the
3.80 quality, per yard	5.00 grade, at the
3.90 quality, per yard	5.10 grade, at the
4.00 quality, per yard	5.20 grade, at the
4.10 quality, per yard	5.30 grade, at the
4.20 quality, per yard	5.40 grade, at the
4.30 quality, per yard	5.50 grade, at the
4.40 quality, per yard	5.60 grade, at the
4.50 quality, per yard	5.70 grade, at the
4.60 quality, per yard	5.80 grade, at the
4.70 quality, per yard	5.90 grade, at the
4.80 quality, per yard	6.00 grade, at the
4.90 quality, per yard	6.10 grade, at the
5.00 quality, per yard	6.20 grade, at the
5.10 quality, per yard	6.30 grade, at the
5.20 quality, per yard	6.40 grade, at the
5.30 quality, per yard	6.50 grade, at the
5.40 quality, per yard	6.60 grade, at the
5.50 quality, per yard	6.70 grade, at the
5.60 quality, per yard	6.80 grade, at the
5.70 quality, per yard	6.90 grade, at the
5.80 quality, per yard	7.00 grade, at the
5.90 quality, per yard	7.10 grade, at the
6.00 quality, per yard	7.20 grade, at the
6.10 quality, per yard	7.30 grade, at the
6.20 quality, per yard	7.40 grade, at the
6.30 quality, per yard	7.50 grade, at the
6.40 quality, per yard	7.60 grade, at the
6.50 quality, per yard	7.70 grade, at the
6.60 quality, per yard	7.80 grade, at the
6.70 quality, per yard	7.90 grade, at the
6.80 quality, per yard	8.00 grade, at the
6.90 quality, per yard	8.10 grade, at the
7.00 quality, per yard	8.20 grade, at the
7.10 quality, per yard	8.30 grade, at the
7.20 quality, per yard	8.40 grade, at the
7.30 quality, per yard	8.50 grade, at the
7.40 quality, per yard	8.60 grade, at the
7.50 quality, per yard	8.70 grade, at the
7.60 quality, per yard	8.80 grade, at the
7.70 quality, per yard	8.90 grade, at the
7.80 quality, per yard	9.00 grade, at the
7.90 quality, per yard	9.10 grade, at the
8.00 quality, per yard	9.20 grade, at the
8.10 quality, per yard	9.30 grade, at the
8.20 quality, per yard	9.40 grade, at the
8.30 quality, per yard	9.50 grade, at the
8.40 quality, per yard	9.60 grade, at the
8.50 quality, per yard	9.70 grade, at the
8.60 quality, per yard	9.80 grade, at the
8.70 quality, per yard	9.90 grade, at the
8.80 quality, per yard	10.00 grade, at the
8.90 quality, per yard	10.10 grade, at the
9.00 quality, per yard	10.20 grade, at the
9.10 quality, per yard	10.30 grade, at the
9.20 quality, per yard	10.40 grade, at the
9.30 quality, per yard	10.50 grade, at the
9.40 quality, per yard	10.60 grade, at the
9.50 quality, per yard	10.70 grade, at the
9.60 quality, per yard	10.80 grade, at the
9.70 quality, per yard	10.90 grade, at the
9.80 quality, per yard	11.00 grade, at the
9.90 quality, per yard	11.10 grade, at the
10.00 quality, per yard	11.20 grade, at the
10.10 quality, per yard	11.30 grade, at the
10.20 quality, per yard	11.40 grade, at the
10.30 quality, per yard	11.50 grade, at the
10.40 quality, per yard	11.60 grade, at the
10.50 quality, per yard	11.70 grade, at the
10.60 quality, per yard	11.80 grade, at the
10.70 quality, per yard	11.90 grade, at the
10.80 quality, per yard	12.00 grade, at the
10.90 quality, per yard	12.10 grade, at the
11.00 quality, per yard	12.20 grade, at the
11.10 quality, per yard	12.30 grade, at the
11.20 quality, per yard	12.40 grade, at the
11.30 quality, per yard	12.50 grade, at the
11.40 quality, per yard	12.60 grade, at the
11.50 quality, per yard	12.70 grade, at the
11.60 quality, per yard	12.80 grade, at the
11.70 quality, per yard	12.90 grade, at the
11.80 quality, per yard	13.00 grade, at the
11.90 quality, per yard	13.10 grade, at the
12.00 quality, per yard	13.20 grade, at the
12.10 quality, per yard	13.30 grade, at the
12.20 quality, per yard	13.40 grade, at the
12.30 quality, per yard	13.50 grade, at the
12.40 quality, per yard	13.60 grade, at the
12.50 quality, per yard	13.70 grade, at the
12.60 quality, per yard	13.80 grade, at the
12.70 quality, per yard	13.90 grade, at the
12.80 quality, per yard	14.00 grade, at the
12.90 quality, per yard	14.10 grade, at the
13.00 quality, per yard	14.20 grade, at the
13.10 quality, per yard	14.30 grade, at the
13.20 quality, per yard	14.40 grade, at the
13.30 quality, per yard	14.50 grade, at the
13.40 quality, per yard	14.60 grade, at the
13.50 quality, per yard	14.70 grade, at the
13.60 quality, per yard	14.80 grade, at the
13.70 quality, per yard	14.90 grade, at the
13.80 quality, per yard	15.00 grade, at the
13.90 quality, per yard	15.10 grade, at the
14.00 quality, per yard	15.20 grade, at the
14.10 quality, per yard	15.30 grade, at the
14.20 quality, per yard	15.40 grade, at the
14.30 quality, per yard	15.50 grade, at the
14.40 quality, per yard	15.60 grade, at the
14.50 quality, per yard	15.70 grade, at the
14.60 quality, per yard	15.80 grade, at the
14.70 quality, per yard	15.90 grade, at the
14.80 quality, per yard	16.00 grade, at the
14.90 quality, per yard	16.10 grade, at the
15.00 quality, per yard	16.20 grade, at the
15.10 quality, per yard	16.30 grade, at the
15.20 quality, per yard	16.40 grade, at the
15.30 quality, per yard	16.50 grade, at the
15.40 quality, per yard	16.60 grade, at the
15.50 quality, per yard	16.70 grade, at the
15.60 quality, per yard	16.80 grade, at the
15.70 quality, per yard	16.90 grade, at the
15.80 quality, per yard	17.00 grade, at the
15.90 quality, per yard	17.10 grade, at the
16.00 quality, per yard	17.20 grade, at the
16.10 quality, per yard	17.30 grade, at the
16.20 quality, per yard	17.40 grade, at the
16.30 quality, per yard	17.50 grade, at the
16.40 quality, per yard	17.60 grade, at the
16.50 quality, per yard	17.70 grade, at the
16.60 quality, per yard	17.80 grade, at the
16.70 quality, per yard	17.90 grade, at the
16.80 quality, per yard	18.00 grade, at the
16.90 quality, per yard	18