

Gradual Transformation From Yellow to Red Metal



Upper Bingham

1. COMMERCIAL MINE. 2. U. S. COMPRESSOR. 3. OHIO COPPER.

Preparations Being Made for a Tremendous Copper Output

wide and carries an average of 100 feet of this distance. The vein averages nearly six feet in width and carries an average of from 2 to 2 1/2 per cent copper, six to nine ounces in silver and as high as \$1.50 in gold.

Probably the longest single ore body opened in the camp is the one known as the Dalton & Lark mine. It has been opened on the tunnel level for a distance of 1,100 feet. Throughout 600 feet of this distance, the vein averages nearly six feet in width and carries an average of from 2 to 2 1/2 per cent copper, six to nine ounces in silver and as high as \$1.50 in gold. The other 500 feet opened carries two small veins, one of copper sulphide and the other lead-silver. The latter, as a rule, lies almost directly on top of the former, being separated from it by a narrow band of quartz. Shipments have been made from the company's Bingham mines during the year from 200 to 500 tons. The company's own smelter at Bingham Junction, the Eagle and Blue Bell mine in the Tintic district is an important one. From information received from an inside source, it is ascertained that the smelting expense does not exceed \$2.50 per ton.

WHERE HEINZE GOT BUSY.

Aside from treating ore from its own mines the Bingham Consolidated company is doing a profitable custom smelting business and since Mr. Heinze became interested in the management of the company's affairs, the smelter has been undergoing some very radical changes and betterment. The capacity of the plant is being increased and the management has announced that after spending something like \$175,000 in experiments and making changes in its flue system there are reasons to believe that the smelter, experienced during the past few years through the damage to vegetation from fumes will be the thing of the past.

The Bingham Consolidated has \$11,000,000 of bonds outstanding, convertible into stock at \$50 per share. The capital stock of the company is 150,000 shares; so the conversion of these bonds would bring it up to 150,000. Like all the other big mining concerns in the camp, electric haulage systems have been provided.

UNITED STATES PROPERTIES.

The properties of the United States Smelting, Refining and Mining company in Bingham are situated up near the head of the main Bingham cañon and consist of the Jordan, Telegraph and Galena mines. The ore is conveyed to the lower part of the camp over an aerial tramway, and then shipped by rail to the smelter at Bingham Junction.

The development of the Starless group, owned by Col. E. A. Wall, has been progressing steadily throughout the year and will undoubtedly

SOME OF THE SMALLER ONES.

One of the attractive mines of the district is the Phoenix, controlled by Andrew Gehardt of Salt Lake. This company has made a good record this year in the production of lead ore and has carried on a very energetic campaign of exploration. The Phoenix ore carries from 25 to 35 per cent lead, 8 to 15 ounces in silver and a heavy excess of iron. The Phoenix company will build a mill for the treatment of its low grade ore during next year. A series of experiments have been conducted recently in a small plant built for that purpose.

The Utah Mines and Smelters corporation has been opening up the old Last Chance property; the Silver Shield Mining company has continued its campaign of development with fairly good results; the Bingham Central, which is backed by some of the leading copper mining men of the state, has met with favorable results and this property gives promise of making into a prominent producer; the Fortuna, over on the Dalton & Lark side of the district has been a regular contributor to the Salt Lake markets and many others of more or less importance have been keeping pace with the times.

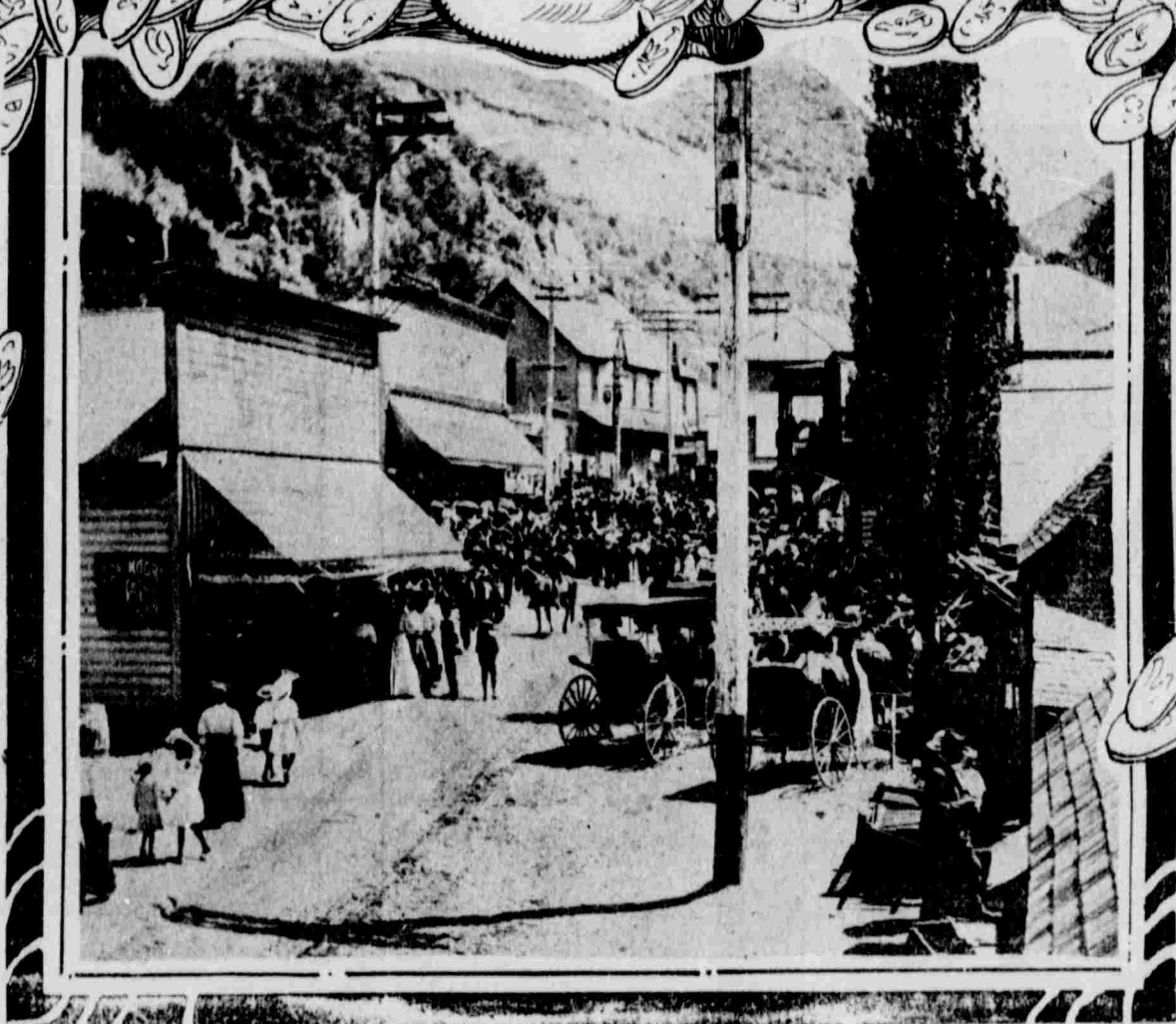
There are four aerial tramway systems in the district and the fifth is projected. Those in operation are owned by the Utah Consolidated, United States, Utah Apex and Bingham-New Haven companies.

Bingham is a camp of deep cañons and for that reason the most of the mining done there is conducted through tunnels.

Miners working in the camp receive good wages and the best of relations exist between employer and employee. There has never been any trouble in the district over the wage question; but in this respect, Bingham has no advantage over any other Utah camp.

SILVER SHIELD'S BIG ORE BODIES.

The Silver Shield Mining & Milling company has been very persistent in the development of its Bingham territory during the past year, and has added greatly to the available tonnage of ore. This mine, it is claimed, now contains upwards of 15,000 tons of mill ore blocked out and ready for extraction as soon as facilities for treatment are provided. The management has lately expressed disappointment over not being able to carry out the plans outlined at the beginning of the year relative to the erection of a mill near the entrance to the main tunnel, owing to the failure to complete arrangements with the Utah Copper company for the use of certain water rights. However, it is believed that these difficulties will soon be overcome and that the mine



A Busy Day on Bingham's Main Street

will then enter upon a long profit making career. The fact that the Wall custom mill has been available has enabled the company to market considerable ore during the past year from which revenue has been obtained to carry on its operations as well as to complete the purchase of 188 acres of additional ground, making the company's total acreage 225, all of which is very favorably situated in the mineral zone of the camp, thus giving the Silver Shield company ownership of

locations covering the Silver Shield vein for a distance of 5,000 feet along its strike.

The purchase of additional ground, together with the fact that the directors have within the last few months installed a new compressor from which power is derived for the operation of machine drills, as well as a large electric generator, is evidence of the confidence that they have in the future of this attractive property.

The Silver Shield mine is splendidly

equipped in every way and there is no reason why it should not be favorably considered as being one of the future great mines of Bingham. Hon. Harry S. Joseph, whom a majority of the voters of Salt Lake county at the late election for the second time selected to represent them in the lower house of the legislature, is manager of the Silver Shield company, and has for a number of years planned his faith in the future of the Silver Shield mine as well as in the camp of Bingham.

Development in Other Utah Camps

IN the Park valley mining district in the northern part of Boxelder county, the principal operations of this year have been conducted by the Century Gold Mining company, under the control of P. W. Madison and associates of Salt Lake City. This company has spent the greater portion of the year in doing development work. But a few months ago, the mill with which the Century mine is equipped, was placed in commission again and has since been turning out an occasional bar of gold bullion. Mr. Madison

says the year has been a very satisfactory one at the Century, and that its condition at the present time is very much better than it was at the beginning of the year. The Sunrise Mining company has done some work in the camp and several other properties have been worked in a small way.

QUIET IN NEWFOUNDLAND.

Little has been done in the Newfoundland district over on the west side of the Great Salt lake. This region contains some attractive copper

outcrops. Not enough has been done, however, to determine the real merits of the country.

A NEW COPPER CAMP.

On the Promontory point which extends into the lake from the north, and not far from Promontory station on the main line of the Southern Pacific, an O'Brien and Salt Lake company, organized during the summer, has opened a new copper camp and is doing some quite extensive development work there at the present time. The ore bodies lie between a line and quart-

Lower Bingham

Photos by W. E. Hurstson.

4. YAMPA SMELTER ABOVE BINGHAM—LOWER BINGHAM.

Past Year Has Furnished Constant Round of Changes

site formation and appear to be extensive. The values as a rule run low, but indications are favorable for the development of better ore at depth. This district has some attractive features about it and it is not unreasonable to believe that a good camp will be developed there in a little time.

DOINGS IN LA PLATA.

Nothing of a sensational nature has occurred in the La Plata district, located southeast of Logan, this year. Development has been carried on almost continuously since last spring on several properties with encouraging results. A Boston company has taken a bond on the La Plata mine, the location of the original discovery in the camp in the early '90's, and have plans laid to do some quite extensive development work there.

Northeast of Logan, some mining is being done on a small scale. But this region has failed, as yet to attract the attention of capital and progress is therefore, extremely slow. However, the country possesses some geological conditions which indicate that it has considerable merit.

IRON COUNTY IRON.

In the iron districts of Iron county conditions are little changed from what they were a year ago. The railroads are no nearer now than they were then, yet there have been several transfers of property recorded in which the Colorado Fuel & Iron company, which has been the owner of a vast area of territory in that region for several years, figured as the purchaser. In time, this country will become a very active portion of Utah, but just how soon, is difficult to contemplate. However, it is believed, that if the present prosperous condition of the country prevails much longer the immense iron ore deposits there will be in demand.

The railroads will then go in and a natural consequence of the opening of the mines will be the erection of large iron and steel rolling mills and manufacturing plants at some central point. This part of the state also contains extensive coal deposits and no doubt the opening of these mines in the near future will be a matter of necessity particularly to supply the demands of consumers along the lines of the San Pedro, Los Angeles & Salt Lake railroad. The iron county coal deposits should be made available to the mining camps of southern Nevada which are now supplied—if they are at all—from the camps of Wyoming or those in Car-

bon county, Utah. It would seem that the development of the Nevada mining districts should result in the speedy opening of the coal measures in the vicinity of Cedar City.

LA SAL BECKONS CAPITAL.

The La Sal mining region in the eastern part of the state, is still beckoning capital to turn its attention that way. Its adherents set up the claim that in the west there is no place more inviting than this one for the prospector—the man of large means to go to find gold, silver and copper mines as well as those containing some of the rarer metals. Probably a half dozen producing properties in the La Sal district are now being operated by Colorado mining men, who send their products either to Grand Junction or Leadville to be smelted.

There is no doubt but that the La Sal district has many attractive features, but it is seriously handicapped for the want of transportation. Yet when one stops to reason the matter out a little, the "Nevada Way" of doing things might be made to apply equally as successful in the La Sal country. In Nevada people penetrate the deserts with a pack animal or an automobile, find the ore and develop mines. Then the railroads come and it is no trouble to get them. A little of this Nevada spirit might work very well in other Utah districts, which are yet in the prospective stages of development.

WASHINGTON PRODUCES COPPER.

Washington county is producing considerable copper now. West of St. George, the Utah & Eastern Copper company is operating the Dixie mine and is smelting at its own plant located at Shem City, about 40 tons of ore daily from which is being produced about 7,000 pounds of copper. The mine is situated about 40 miles from Avon, a station on the main line of the San Pedro, Los Angeles & Salt Lake railroad and freight is handled to and from by means of a large traction engine. Late last year the shaft through which the mine had been operated from its inception became irreparably out of order and the management then drove a tunnel into the mountain which cut the ore bodies considerably lower down. Just about the time it was connected up with the ore, terrific rains fell and washed out miles of the road to the railway station which had been built at quite heavy expense. This caused a delay in the starting of the smelter again. One other copper property, the Paymaster, has been undergoing vigorous development with favorable indications resulting. Outside of these two above named properties there is not much doing in a mining way at the present time, yet some activity is noted on the same belt further south in Arizona and Nevada.

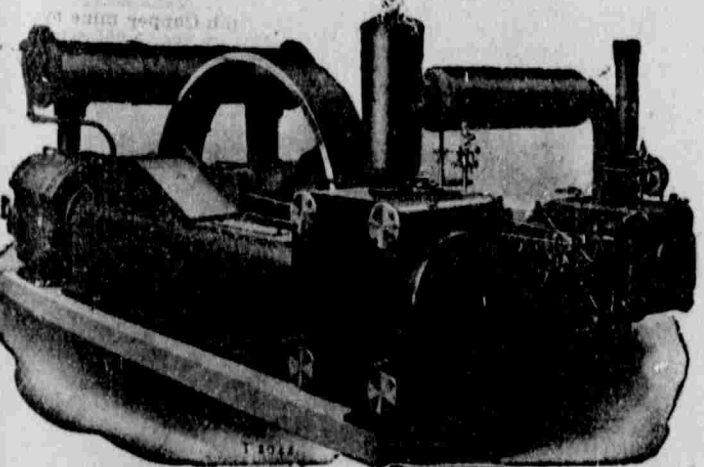
The Drum district in Millard county has been inactive this year. Several attractive properties are located there, but there is nothing being done with them.

Utah Mining Machinery & Supply Co.

224-232 S. WEST TEMPLE STREET.

J. E. GALIGHER, Manager.

102-132 PIERPONT AVENUE.



SALT
LAKE
CITY

Agents for

INGERSOLL-RAND DRILL CO.

A.S. CAMERON STEAM PUMP CO.

JNO. A. ROEBLINGS SONS CO.

BUFFALO STEAM PUMP CO.

CALIFORNIA POWDER WORKS.

GENERAL MINING SUPPLIES.