

# THE CARRIER'S ALPHABET

## BEING THE CARRIER'S ADDRESS

### FOR 1905

#### BY EARLE HOOKER EATON

COPYRIGHT 1904 BY EARLE HOOKER EATON

**A** is for Address. (Thus the Carrier spoke.)  
I write one each year, and I find it no joke.  
Poor Pegasus limps as he trots down the street.  
So scan with forbearance his poetic feet.

**B** is for the Bulldog I meet at the gate.  
He always seems hungry for something to "ate."  
And oft in the past has this meaneast of Towlers  
Bereft me by force of the seat of my trousers!

**C** is for Carrier—don't say a word!  
When I'm on time people say "He's a bird!"  
Just let the paper get round rather late—  
Then I'm a "dead one," a "slow poke," a "skate!"

**D** is for Devil—the paper keeps one.  
Day after day he has nothing but fun—  
Inking his form and his feet and his face,  
Dodging a mallet, a plane or a chase.

**E** is for Editor, brainy and brave.  
Hot on the trail of each rogue and each knave.  
When he sits down in his sanctum sanctorum,  
How he does roast 'em and flay 'em and score 'em!

**F** is for the Foreman so gentle and mild.  
When things go wrong and he gets a bit "riled,"  
Wonderful eloquence leaps to his aid  
When he is teaching the "devil" his trade.

**G** STANDS for Goat, which is more than I'd do.  
Bilky with whiskers once made me feel blue;  
Cut up the queerest and meanest of capers—  
Swallowed a hundred or two of my papers.

**H** is for Hurry and Hustle and Hike.  
Watch me next time when I come down the pike!  
Troubled a bit with rheumatics or gout?  
Not on your life—when the paper's just out!

**I** is for Items. We give you a lot;  
Serve 'em up spicy and breezy and hot.  
Everything going you'll find in our sheet,  
Bright as a dollar and first on the street.

**J** is for Jawsmith, a novel pet name.  
The "devil" in private invented the same.  
And also in private explains with great vim—  
The foreman's a Jawsmith, according to him.

**K** is for Katie, my "steady," you know  
(I have sev'ral others, but they're pretty slow).  
And when I have money and di'monds and stocks  
Katie gets a line sentence at darning my socks.

**L** is for Leather—shoe leather, you know.  
I do so much walking my shoes have no show.  
The job of an actor is just 'bout my size;  
I'd make a great hit setting over the ties.

**M** is for Monkey, the name of a dash  
That keeps two news items from having  
a clash.  
Sometimes, like its namesake, it gets up too high,  
And then the boss sputters and wants to know why.

**N** STANDS for New Year. There's one just on tap.  
It runs from Time's barrel and covers the map.  
And during the year when the good things are  
flowing  
May all of us catch 'em both coming and going.

**O** STANDS for Onward. A bull I once met  
When loaded with papers and full of regret.  
I ran for the fence, but the bull was too swift,  
And our circulation—she got quite a lift!

**P** is for Printers, the boys on the sheet.  
I knew one who used to set type with his feet.  
Said he: "What you doing? You give me the chills!"  
Said he: "Why, I simply am footing my bills."

**Q** is for Quads, little things made of lead.  
Though all through the paper, not one  
shows his head.  
They're just like some people we know—you and I—  
So small and so measly they're hardly type high.

**R** is for Reporter—a worried young man  
Who hustles and scribbles as fast as he can.  
If he were as dead as a doornail tonight  
And some one yelled "Copy!" he'd sit up and write.

**S** is for Swiftly. That's how I proceed  
When leaving the paper that all like to read.  
If I had my way and could bring it about,  
You'd all get the paper before it was out.

**T** is for Tommy, who trots at my heels.  
He just wags his tail, but it pays for his meals.  
He'll bound with a paper upon your porch floor,  
And bark "Bow, wow, wow!" till you open the door.

**U** is for Useful, a fine thing to be.  
And Katie declares that the word just fits me.  
In fact, she asserts, with a sly, wicked joy,  
"You're useful, if not ornamental, my boy."

**V** is for Five Dollars. I found a bill once,  
And then found the owner. Say, I was a  
dunce!  
She gave me five pennies. "You're honest!" said she.  
Said I, "My dear madam, are these ALL for me!"

**W** is for Wealthy—a thing I am not.  
I've never been taken for Andy the Scot,  
And yet it seems certain, the way I'm now placed,  
That, like A. Carnegie, I shan't die disgraced.

**X** is for Xtras. Big towns get them out  
From morning till night, and the boys—  
how they shout!  
A record for promptness I'd make there quite soon,  
For six o'clock extras are ready at noon.

**Y** is for Yellow. Some papers are that.  
They give you the jaundice and take off  
your fat.  
I'm thankful to state it may truly be said  
Our paper's not yellow at all, but it's READ.

**Z** is for Zealous. On foul days and fair  
The carrier served you with promptness  
and care  
And all the year long kept your wishes in view.  
Perhaps on this day you'll REMEMBER HIM too.

Steam Heat, Electric Lights, Baths, Hot and Cold Water in each Room.  
Rooms Single or En Suite.

## Hotel Chadbourne

MRS. N. OLBRICH, Prop. RATES: 50c, 75c and \$1.00 per day.  
243 SOUTH STATE ST. Just north of the Knutsford.  
Bell Tel. 2123-Y. Ind. Tel. 1605 and 2775 Salt Lake City, Utah

## How the State is Filling Its Streams With Fish.

WITH the exception of 250,000 eastern brook trout fry imported during the year from the government hatchery at Leadville, Colo., by the Rio Grande Railway company for planting in the Provo river, the Utah state hatchery has furnished all of the fry distributed among the various Utah streams during the year 1904 and in addition to that has sold 18,000 fry to private parties. State Fish and Game Warden John Sharp, in his annual report, shows that 1,763,000 fry have been distributed throughout the streams of the state during the year, and of that number 1,513,000 were hatched at the Utah hatchery.

Of the total number produced at the hatchery and distributed this year, 1,008,000 were eastern brook trout and 505,000 were native trout fry. That the state hatchery is fast becoming a source of revenue is evident from the fact that \$40 was realized from the sale of fry this year as compared with \$23 for the year 1903. The total expenses of maintaining the hatchery and distributing the fry, not including the salaries of the officers and employees, was \$2,214.88. Deducting \$400 received from the sale of fry leaves a net cost of \$1,714.88. Commissioner Sharp reports a steady improvement in angling conditions of the state. His report shows the following distribution of trout fry among the streams in the various counties of the state:

	Eastern Brook Trout Fry.	Native Trout Fry.
Boulder county.....	40,000	40,000
CACHE county.....	100,000	50,000
Carbon county.....	50,000	50,000
Utah county.....	100,000	50,000
Morgan county.....	100,000	50,000
Wasatch county.....	100,000	50,000
Washington county.....	20,000	20,000
Summit county.....	100,000	100,000
Salt Lake county.....	200,000	150,000
Weber county.....	100,000	50,000
Rich county.....	100,000	50,000
Sold to private fish ponds.....	83,000	15,000
Retained at hatchery.....	15,000	.....
Planted in Utah Nursery pond.....	15,000	.....
<b>Totals.....</b>	<b>1,008,000</b>	<b>505,000</b>

Total fry produced at state hatchery.....1,513,000  
Imported by Rio Grande West-ern from Leadville hatchery for Provo river.....250,000  
Grand total.....1,763,000

**Grip Quickly Knocked Out.**  
"Some weeks ago during the severe winter weather both my wife and myself contracted severe colds which speedily developed into the worst kind of a gripe with all its miserable symptoms," says Mr. J. S. Egerton of Maple Landing, Iowa. "Knees and joints aching, muscles sore, head stopped up, eyes and nose running, with alternate spells of chills and fever. We began using Chamberlain's Cough Remedy, aiding the same with a dose of Chamberlain's Stomach and Liver Tablets, and by its liberal use, soon completely knocked out the grip."  
"It is a good plan to have a dose of the Tablets when you have a cold. They promote a healthy action of the bowels, liver and kidneys which is always beneficial when the system is congested by a cold or attack of the grip. For sale by all druggists."

**A DARING CAVALRY FEAT.**  
At the beginning of the war in the east it was the custom of those who discussed the comparative resources of the combatants to attach little importance to the cavalry arm of the Japanese service. That the efficiency of this branch was greatly underestimated was soon made apparent. Even against such a famous body of horsemen as the Cossacks of the Don the



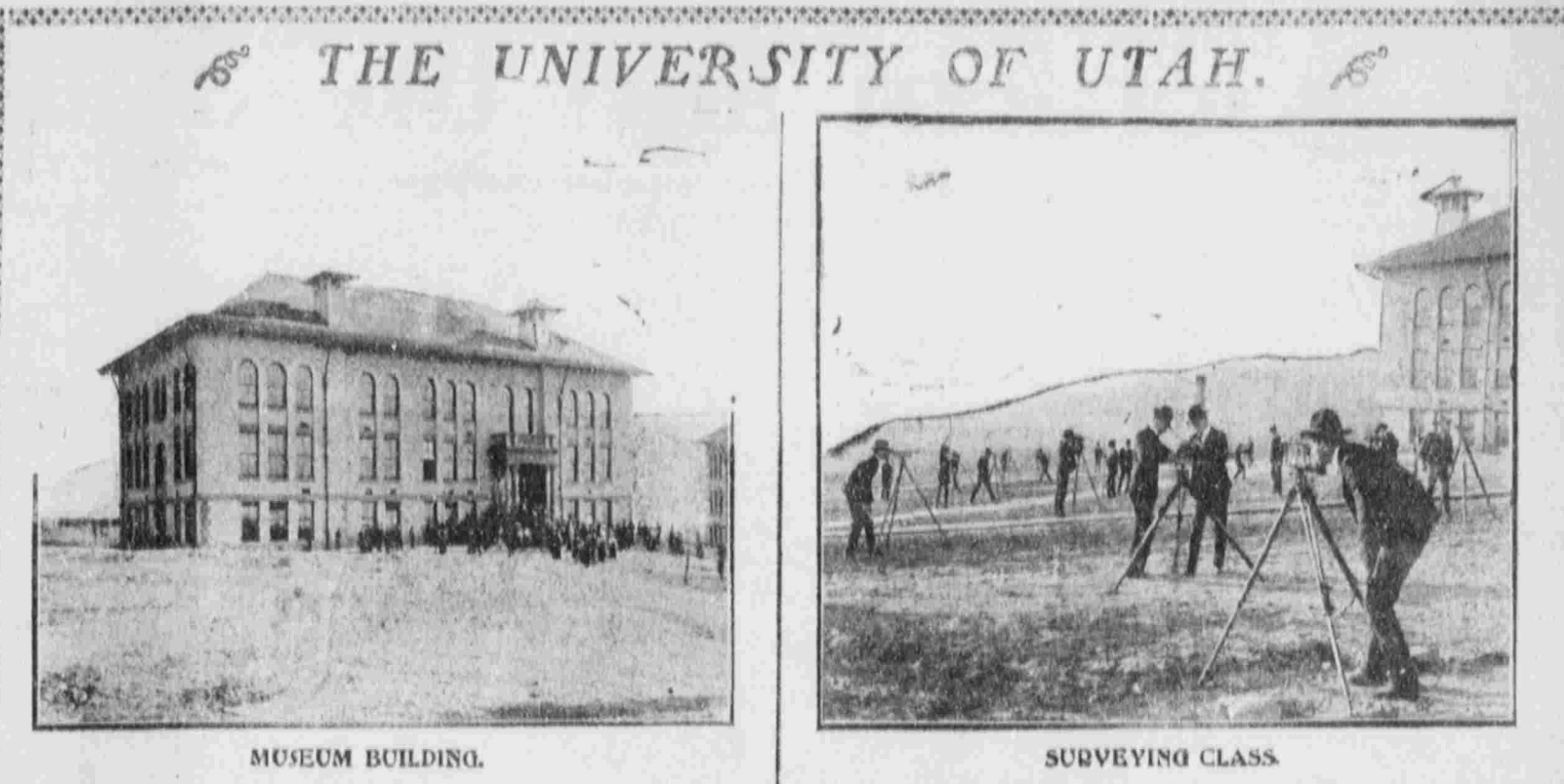
poorly mounted cavalymen of the mikado have made a respectable showing, and in individual acts of bravery they have surpassed all previous records. In the engagement at Benishu, Prince Kanin, a relative of the Japanese sovereign, with a vastly inferior force of mounted men made a daring attack on the enemy's flank, turning it and putting the Russians to precipitate flight.

**A Certain Cure for Croup.**  
When a child shows symptoms of croup there is no time to experiment with new remedies, no matter how highly they may be recommended. There is one preparation that can always be depended upon. It has been in use for many years and has never been known to fail. viz: Chamberlain's Cough Remedy. Give it and a quick cure is sure to follow. Mr. M. F. Compton of Market, Texas, says of it: "I have used Chamberlain's Cough Remedy in severe cases of croup with my children and can truthfully say it always gives prompt relief." For sale by all druggists.

**Inward and Outward.**  
The inward effects of humors are worse than the outward. They weaken all the organs, inflame the mucous membrane, cause catarrhal troubles, and endanger the whole system. Hood's Sarsaparilla eradicates all humors and cures all their effects. It's the great alterative and tonic medicine whose merit has been everywhere established. Accept no substitute.

**BIBLES AND TESTAMENTS.**  
Bagster's Oxfords and Cambridge Latest Sunday School Teachers' and Family Bibles and Testaments. Latest Revised Helps and References, bound in cloth, morocco, levant and seal. New and large shipment just received. A good Holiday Gift.  
DESERET NEWS BOOK STORE, 6 Main St.

**AUDITORIUM EUROPEAN HOTEL**  
M. P. CERMO.  
45 EAST THIRD SOUTH STREET  
SALT LAKE CITY, UTAH.  
Both Phones



MUSEUM BUILDING.

The University of Utah is making rapid strides in all its departments. So rapid has been its growth during the last two years that the present buildings are now inadequate to meet the demands and more class and laboratory rooms are a necessity.

The School of Mines has had a phenomenal growth—a growth far beyond the expectations of its most ardent supporters.

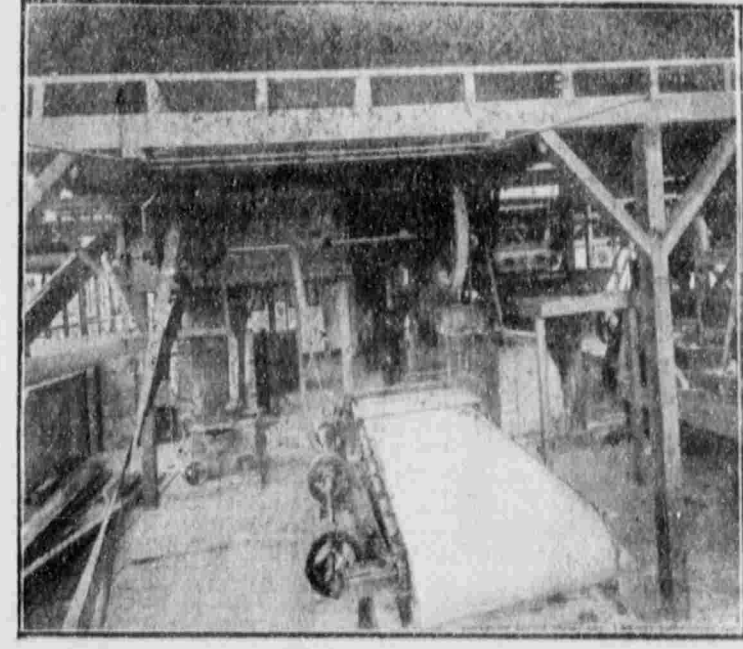
The chemical, dynamic, mechanical, physics, and assaying laboratories and shops and drawing rooms are taxed to their utmost limit largely with students in the engineering courses of the mining school. Already this school is becoming favorably known throughout the east and west and inquiries concerning it are coming from all over the country. A number of students now in the school are from east of the Mississippi river and from other places outside of Utah, and this number from other states in attendance will rapidly increase as the opportunities afforded by the school of mines become wider and better known.

The School of Mines is destined to become the most important factor in the development of Utah's greatest source of wealth if properly cared for by the Legislature, and that the law makers of this state will look well into its merits and see its usefulness there can be no doubt.

With large numbers of mining engineers well equipped with a good knowledge of chemistry, metallurgy, mineralogy, geology, practical electricity and mechanical constructions, the great mining industry of the state and many manufacturing industries emanating from such knowledge will inevitably be lifted to a higher plane of progress and importance; and many means and sources of material wealth be discovered not even thought of now. The State of Utah is pre-eminently a mineral common wealth and as yet its sources of wealth in this line is hardly known and scarcely realized. The School of mines with its fine metallurgical and other important laboratories, if supplied with means sufficient to put it and keep it in first class condition, will become the great factor in the development of industries which will make the State of Utah one of the most wealthy of the inter-mountain region.



UNIVERSITY CAMPUS, SHOWING SOME OF THE BUILDINGS.



METALLURGICAL LABORATORY.



FOUNDRY.



DOMESTIC SCIENCE.

The State Normal school already has an enviable reputation. The work accomplished in it has been and is spoken of in the highest terms of praise by a number of eminent educators of national and international reputation.

This school is now taxing to the utmost the room space and facilities with which it is supplied. No greater mission for good and for the up-building and the broadening of the people of Utah has been performed than by the State Normal school. It has been aggressive and progressive both in methods of teaching and in subject matter taught. In these particulars it has been foremost in its work in the United States. There are few better normal schools any where than that which is found at the door of the people of Utah and than that which is established and maintained by the state. The people of Utah should certainly be proud of its attainments and see that its needs are met in a liberal and generous manner.

The School of Arts and Sciences, the school around which both the Mining and Normal schools are collected is the main school of the University of Utah. In it all the subjects of the entire institution is open to students. Unlike the courses in the other schools which are made up mostly of prescribed subjects all the courses in this school consist of subjects almost entirely optional to the students under the guidance of an advisor. This school is gradually growing and becoming a power in the culture feature of the people of Utah. Many excellent courses are offered by men of superior ability. For under-graduate work in the arts and sciences in no other institution will the student come directly in contact with men of greater ability, as most of the work in this school is done by well prepared professors instead of instructors and assistants. The University of Utah in all its schools and departments is doing most excellent work and (taking under consideration that it embraces three large states schools) for a smaller expenditure of money than any other university in the country. This is found to be true by actual comparison and the reason of this is the concentration in one place of the State Normal school and the State School of Mines with the University.

# UNIVERSITY OF UTAH

Salt Lake City.



The head of the Public School System of the State.

The University includes:

The School of Arts and Sciences  
The State School of Mines, and  
The State Normal School. **MM**

The School of Arts and Sciences offers a wide choice of subjects leading to a broad and liberal education.

The School of Mines gives four year courses in Mining, Civil, Mechanical, Electrical, and Chemical Engineering.

The shops and laboratories are splendidly equipped, and the surrounding mines and smelters of various kinds, afford exceptional advantages for thorough and practical work in all these courses.

Study mining in a mining country.

The State Normal School is praised for the excellence of its work by leading educators in the United States. It provides normal and kindergarten training, and also college-normal courses, Manual Training and Domestic Science are features of the Normal School.

Expenses are low. No tuition is charged, but an annual registration fee of ten dollars is required.

The University offers excellent advantages for a broad, liberal and practical education. Catalogue free upon request.