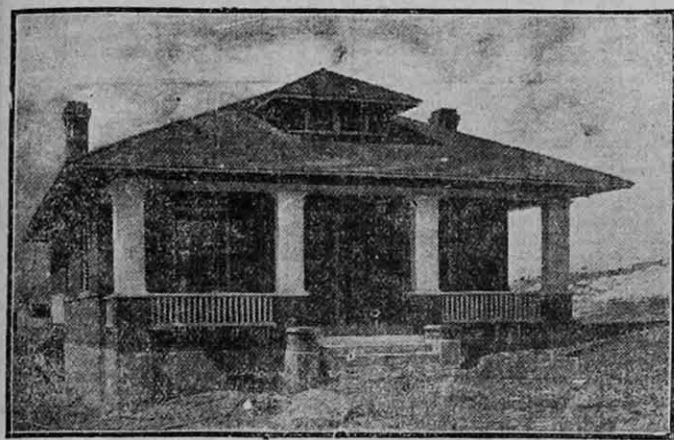


Realty Values That Cannot Fall!



"North Bench" Bungalows.

Substantial and attractive are the new modern bungalows we offer for sale on Tenth Avenue. They were built for homes and have every modern convenience—large verandas, screened back porches, cement steps, cement cellars, gas, electric lights, furnace if you desire—each so individual in design that you cannot fail to be suited.

PRICE \$3,000 AND UP.

These bungalows are sold at a reasonable figure—very. They are close to the car line and have a superior "North Bench" location. Sold by us or by any first-class Real Estate Dealer in the city—for cash or on our monthly payment plan.

Salt Lake Security & Trust Co.

32 Up, Main St. Phones—Bell Ex. 39; Ind. 142.

Choice building lots in city limits; fine level lots, 100 ft. wide, building rapidly; \$125.00 to \$250.00 per lot; \$1.00 cash, \$2.00 per month; 7 per cent interest. These lots will double in value before they are half paid for. Save a few dollars monthly and begin to accumulate "own something."

53x165, East 7th South, between 5th and 6th East, cheap enough at \$2,500.

160 acres near Granger, 3 horses, barns, corrals and farm implements.

33 acres and eight acres west of the Old Copper Plant, is a great bargain at \$4,000.

4-room pressed brick, bath, a nice cozy home. Price, \$2,500. Will sell on very easy terms; also a 5-room modern frame bungalow. Price, \$2,500; terms to suit you.

Hubbard Inv't Co.

66 W. 3rd South.

FOR SALE

EMERSON HEIGHTS.

"On the brow of the East Bench." City water. Choice sidewalks. Choice hardwood trees (next spring). 100 gone; 200 lots yet to choose from.

\$5.00

For lot per month secures your choice of lots, 7 per cent on unpaid balance. Let us show the property. If the bread winner of the family dies our lots are so good we will refund every dollar paid on contract if the survivors so desire.

GEORGE M. CANNON CO.
Rooms 121-123 Temple Building.
Phone Bell 57.

MY HOME AT A BARGAIN.

Must Be Sold. 4-room light pressed brick, with cellar, bath room, nice porches, water and lawn, brick chicken coop, lot 50x165. Ideal neighborhood, 1310 Vermont street, Ashton Avenue car line. Inquire of ROCKWOOD BROTHERS, The Grain and Hay People. Bell 370; Ind. 636. 243 West South Temple Street.

MEASURING THE WORLD.

How Ordnance Maps Are Made.

While most of us have, when at school made maps by the simple expedient of copying another one, there are many who have never given a thought to the method by which the original map of a place or a country is made. In Great Britain there is a government department called the "ordnance survey," whose duty it is not to make maps of the country, since that was done many years ago, but to bring the existing maps up to the greatest possible pitch of accuracy.

The method by which such a survey is carried out is to cover the whole area with a system of triangles. This is called "triangulation." A triangle is so useful for this purpose because if you know the length of one side and the number of degrees, minutes and seconds in the angle at each end of it, you can then construct the whole triangle with the utmost exactness.

WONDERFUL INSTRUMENTS.

The first thing to do, therefore, is to measure a line, a base line as it is called. Six of these base lines have been measured in this country, the original ones being on Houslow Heath and Salisbury Plain, the former being about five miles and the second about seven miles long.

These are measured with most elaborate care. The instruments used are constructed so as not to vary with the changes in temperature even, and the marks on them are so fine that they have to be read with a microscope. Such instruments that a line six miles long can be measured accurately to within one-tenth of an inch.

When this line has been measured a theodolite is brought into use. A theodolite, it should be explained, is a small telescope mounted on a stand and fitted with scales, so that by sighting it first on one thing and then on

If You Have a Bargain, See Us.

If You Are Looking for a Bargain, See Us.

\$3,500—7-room strictly modern red pressed brick, 500 First Ave., lot 2 1/2 by 10 rods. A beautiful home. Owner in California and wants to sell at once.

\$3,500—5-room brick, very near in, north-east, lot 14 by 7 rods; 1/2 cash. The ground is worth the money. Let us show it to you.

\$2,000—70 1/2 by 89 feet, with 12 feet right of way, and large adobe house, at 643 South Third East. See the location and you will agree it is cheap.

\$20,000—10 by 10 rods on the corner of South Temple and Thirteenth East, easy terms. Examine this.

\$16,000—185 by 110 feet, on the corner of North Main and Currant Streets, overlooking the city. This is a very choice location; good terms can be had.

\$340—5 acres dry land 1 mile south of Garfield Junction. This lies right in the "Dry Land" section and is a bargain.

\$500—2-room frame house, lot 36 by 125 feet to 16-foot alley, on North Third West.

Danley & Johnson

30 West Third South. Both Phones 4125.

GREAT BARGAINS.

DON'T PASS THESE UP. INVESTIGATE. Light buff brick, modern, 5 large rooms, with closets, pantry and bathroom. 535 ft. by 9 rods, nice lawn, trees and shrubbery. Only \$3,000. If sold at once, owner having to leave town.

5-room brick on Cleveland Ave. lot 80x 165 feet, a bargain at \$2,600.

Nice homes in all parts of the city. See us for FIRE INSURANCE.

HOME AGENCY CO.,
Cartwright & McGhie,
429 Commercial Block.
Bell Phone 1488. Ind. Phone 1438.

Only \$125.00

Cash and \$10 per month for a 2-room rustic house with summer kitchen on Kensington Ave. Lot 55x110. Price \$500.

Geo. B. Standing

Real Estate Broker.
No. 72 Main St. Phone 4291.

30 ft. Bowels—

Biggest organ of the body—the bowels—and the most important—

It's got to be looked after—neglect means suffering and years of misery. CASCARETS help nature keep every part of your bowels clean and strong—then they act right—means health to your whole body.

TRIANGLES TAKEN ABROAD.

When the network of triangles has been carried some distance one of the sides of a triangle is measured to check what has been done. The survey of the United Kingdom was carried out from the base line on Salisbury Plain, and when the network had reached the north of Ireland a line was measured along Lough Foyle, when it was found that the computed line was only about five inches wrong in ten miles.

The triangle network of England has been connected with those of Belgium and France by taking sights across the

30 ft. Bowels—

Biggest organ of the body—the bowels—and the most important—

It's got to be looked after—neglect means suffering and years of misery. CASCARETS help nature keep every part of your bowels clean and strong—then they act right—means health to your whole body.

CASCARETS are a box for a week's treatment. All druggists. Biggest seller in the world—million boxes a month.

The ideal Christmas Present—
Something for the entire family—
A BUILDING SITE

Jackson Square

BETWEEN 3RD AND 4TH EAST BELOW 9TH SOUTH.

Plan for the future—not for the present alone. Some trifling trinkets for Xmas are soon forgotten.

Let your family concentrate upon the thing that will bring most happiness and comfort to you all.

BUY A LOT UPON WHICH TO BUILD YOUR HOME.

JACKSON SQUARE is most admirably located—close in—good surroundings—pure water—pure air—close car line with twelve minute service—schools and churches within easy access—curbing laid—four year old shade trees—practically all improvements in and paid for. Could any more inducements be offered? Do you need any more? If you see Jackson Square we think you'll be satisfied.

LOTS at \$535 to \$660

\$15 Down—\$15 Monthly payments. Desirable building lots still unsold—but they're selling fast.

Kimball & Richards

30 MAIN.

"LAND MERCHANTS"

Phones 3992

FOR SALE—

CANNON & CANNON,
18 East South Temple.

2-room rustic house, 50x135 feet of ground, close to street car line. Forest Dale; \$500; terms to suit.

4-room brick, water in kitchen, electric light, cement sidewalk, close to car and school, southeast, \$1,800; \$500 cash, \$20 per month.

6-room adobe, 43x132 ft., not far from Temple block, \$3,000.

32x39 feet, 9-room comfortable house, with modern conveniences, streets paved on two sides, sewer connected, etc., located near Rowland hall, northeast. This is an ideal site for apartment house; only \$6,500.

HILL CREST building lots are very popular, 50x165 feet for \$25.

FOREST DALE building lots for \$110 and up.

EMERSON HEIGHTS commands a most beautiful view of the valley; cement sidewalks and city water. Located 1 1/2 miles south and 1 1/2 miles east of city. Prices, \$250 and up.

CANNON & CANNON,
18 East South Temple Street.

Walker Brothers,

"FARM SPECIALISTS."

20 1/2 MAIN STREET (SECOND FLOOR).

Bell 1291; Ind. 1246.
23 acres Cor. 21st South and State, 120 rods of valuable frontage, street car track now within a mile of the place; service in 1910. A pretty level tract, the best sandy loam, best water right; house of 5 rooms, buildings, fences and everything good. If you will "do it now," wagons, poultry, hay and potato crop will be given with the place.

CITY PROPERTY.
\$1,500—\$200 down, and small monthly payments will put you in possession of a new 4-room modern pressed brick cottage, 7 blocks from the postoffice and cement walks.

THE WINTER'S CHILLING BLASTS

Are rapidly approaching, and no one will deny the real comfort and enjoyment, the satisfaction of owning your own residence. We can furnish you one.

Choice Terms.

YOUR OWN PRICE.

RENT WILL SECURE IT.

DANLEY & JOHNSON,
30 West 3rd South. Both Phones 4125.

We buy and sell

Sugar Stock

Call and see us

George M. Cannon Company.

A MODERN 5-ROOM BRICK ON Snow Ave. between Main and West Temple, north of Eighth South. Nice sized lot, with lawn and hedge in front. Large bath room complete, also clothes closet and pantry with glass cased shelves. Large basement, front and back porch, and stairway with room for two large rooms upstairs. Price, including sidewalk pavement paid for, \$3,500. Terms arranged.

Burt & Carlquist,

Phones 350. 14 West 3rd So.

IF YOU HAVE A BARGAIN, SEE US. IF YOU ARE LOOKING FOR A BARGAIN, SEE US.

\$165—Lot 24x30 rods on Fourth Ave., close in, for cash.

\$120—Lot 35 by 150 feet to alley, East Side, all special taxes paid.

\$25—Per foot, finest flat or residence on Brigham St., close in.

\$25—Per foot, nice lot on West Third South, \$35 per foot below the market.

\$260—70 by 93 feet, on Third East; a fine flat site.

\$400—7-room modern brick, built for a home; lot 50 by 125 feet to alley; south front, a bargain.

\$400—2-story, 6-room red pressed brick, strictly modern on West Third South. All taxes paid. Everything first class and is cheap.

Danley & Johnson

30 West 3rd South. Both Phones 4125.

WILL SELL YOU AT A BARGAIN.

vacant, a corner lot, 100 ft. by 100 ft. in part of the city, James K. Shaw & Co., Suite 300 D. F. Walker Bld.

100 ft. lot on Riverside Ave., \$500; 10 ft. lot 2nd E. and 11th South, \$500. Acre lot near 15th South of State, \$500; 3-room house and 100 ft. lot in Murray, \$500. Phone H. J. Smith, Murray.

A NINTH EAST BARGAIN.

Handsome red pressed brick cottage of 8 large and conveniently arranged rooms. Modern throughout, including furnace. Lot 25x30 rods, east front. Nice lawn, yard fenced and well kept. Owner forced to sell. See

ASHTON - JENKINS CO.

47 Main Street.

CHOICE BUILDING LOTS SOUTH-eastern part of city, easy terms: \$10 down, \$5 monthly, no interest.

NATIONAL R. E. & INVEST CO.

Home Builders, Easy Payments, 3% Main St. Ind. 324, Bell 4131

Bargain for Cash

50x157 to alley on Lake St. Pace East, at big bargain for cash.

Only \$750.

Butterworth & Wright

55 So. Main. Both Phones.

Third East.

Between 9th and 10th South.

One block to care line.

Jackson Square

IDEAL HOME SPOT.

High class improvements all paid for. Thoroughly modern, close in property.

FEW LOTS REMAINING.

\$35 to \$600 EACH.

\$15 Down—\$15 Monthly

SEE US TODAY.

Kimball & Richards

"Land Merchants."

30 Main Street. Both Phones 3992.

SEE HOUSTON, THE HOUSERS, 21 Main Street.

\$6.90

A month is all it will cost to buy a new modern "close in" home

At the price of \$2,000 you can purchase one of the 5 remaining new homes which are being erected in "Jefferson Place" on our "Easy Terms Plan," which only requires a monthly payment of \$6.90. These payments when averaged, are credited as \$18.19 on the principal and \$6.90 on interest. Consequently, each month you save \$18.19, while it only costs you \$6.90 a month to live in the house.

Go to "JEFFERSON PLACE" and look at them. Located off Eighth South between West Temple Street and First West Street, in the paved district, only 15 minutes' walk from the Business Center.

Out of the 14 houses 9 have been sold. You can choose yours from the other 5 which are just being built.

OTHER GOOD BUYS.

\$1,000—A neat new 4-room cottage, good lot, with south front, located within 1/2 block of West Temple Street Car line, near 10th South. Terms, \$100 cash balance \$15 per month.

\$2,000—A new cozy 4-room brick cottage, near 5th South Street and 11th East. Good lot. Terms, \$150 cash, \$25 per month.

\$2,500—Two very fine new 4-room modern pressed brick cottages, fully modern plumbing, lots 27 1/2 x 135 to alley. Cement sidewalk. On Blaine Avenue, between 9th and 10th East. Very easy terms.

Eighteen fine North East Bench lots at low prices and very Easy Terms.

Burt & Carlquist

Real Estate—Loans—Insurance

14 WEST THIRD SOUTH ST. PHONES 350.

Buy a Home Now And Save Money.

\$2500

A large new 4-room modern cottage, on the West Side. Cement cellar, chandeliers, lot 37 1/2 x 125 feet to alley. Terms, \$200 cash and balance like rent. Will take a smaller place in exchange.

\$3750

A beautiful new 5-room modern cottage, southeast. Open work plumbing, chandeliers, fine mantle, cement cellar and walks. Stairway set to finish, three rooms upstairs. Terms, \$300 cash balance \$9 per month.

For bargains see us. We write fire insurance.

82 W. 2nd South St. Both Phones 24.

Danley & Johnson

30 W. 3rd So. Both Phones 4125.

HILL CREST

The most attractive subdivision on the market is located on 13th South and 10th East Street. Lots are

40x165 Feet

In size. Not far from street car line. Good water rights. No trouble to show property. Price per lot \$225. Terms, \$25 cash, \$10 per month. No interest.

Cannon & Cannon

15 East South Temple Street.

"Hamilton Place" BUNGALOWS

PRICE \$3,000 and up.

\$500 down, \$30 Monthly.

Like Rent.

These bungalows may be purchased from us on a "rent" basis. Notice.

James K. Shaw & Co., first-class real estate dealer in the city.

Salt Lake Security & Trust Co.

22 UP Main St. Phones 142.

Utah-Idaho Inv. Co.

212 Main St. Rooms 5 & 6. Ind. 591.

Bell 622.

"SEE US" for Homes, Building Lots, Fire Insurance.

HUBBARD INVESTMENT COMPANY, 66 W. 3rd South.

3-ROOM FRAME NEAR CORNER OF 12th East and Brigham St., \$1,800; 150 down, \$15 per month. Bell 726-K; Ind. 1109.

DELINQUENT NOTICE.

THE CENTURY GOLD MINING & MILLING CO. Principal place of business, Salt Lake City, Utah. Notice.

There is delinquent on the following described stock on account of assessment No. 26, levied on the 15th day of October, 1909, the several amounts set opposite the names of the delinquent shareholders as follows:

Name	No. of Shares	Assessment
James Rosser	175	\$1.19
James Rosser	202	\$1.19
P. W. Madsen, trustee	309	\$1.00
P. W. Madsen, trustee	201	\$1.00
Geo. Hyer	170	\$1.00
H. L. Nelson	191	\$1.00
Dr. C. M. Benedict	152	\$1.15
P. C. M. Benedict	152	\$1.01
E. W. Madsen	155	\$5.00
John McLelland	200	\$5.00
John McLelland	180	\$3.00
Robt. Gardner	1775	\$1.00
John Matson	2005	\$2.00
A. J. Kirk	180	\$1.00
A. B. Pembroke	176	\$2.00
Jas. A. Follock & Co.	228	\$2.00
Cannon & Cannon	203	\$1.00
Cannon & Cannon	203	\$1.00
Cannon & Cannon	204	\$1.00
M. C. Higgins	2075	\$2.00
J. H. Fairbank	2105	\$2.00
Samuel Paul	1805	\$4.05
Mary A. Rosser	182	\$2.00
C. L. W. Madsen	142	\$1.33
Mrs. E. W. Madsen	182	\$2.00
H. Hussey	1128	\$3.00
C. H. Hussey	1181	\$3.00
W. Scott Weller	2077	\$1.00
A. M. Peterson	185	\$1.00

And in accordance with law and an order of the Board of Directors made on the 10th day of October, 1909, so many shares of each parcel of said stock as may be necessary, will be sold at the office of the company, Standard Furniture Co., 7 and 9 Upper Main Street, Salt Lake City, Utah, on the 25th day of December, 1909, at 2 p. m., to pay the delinquent assessment, together with the cost of advertising and expense of sale.