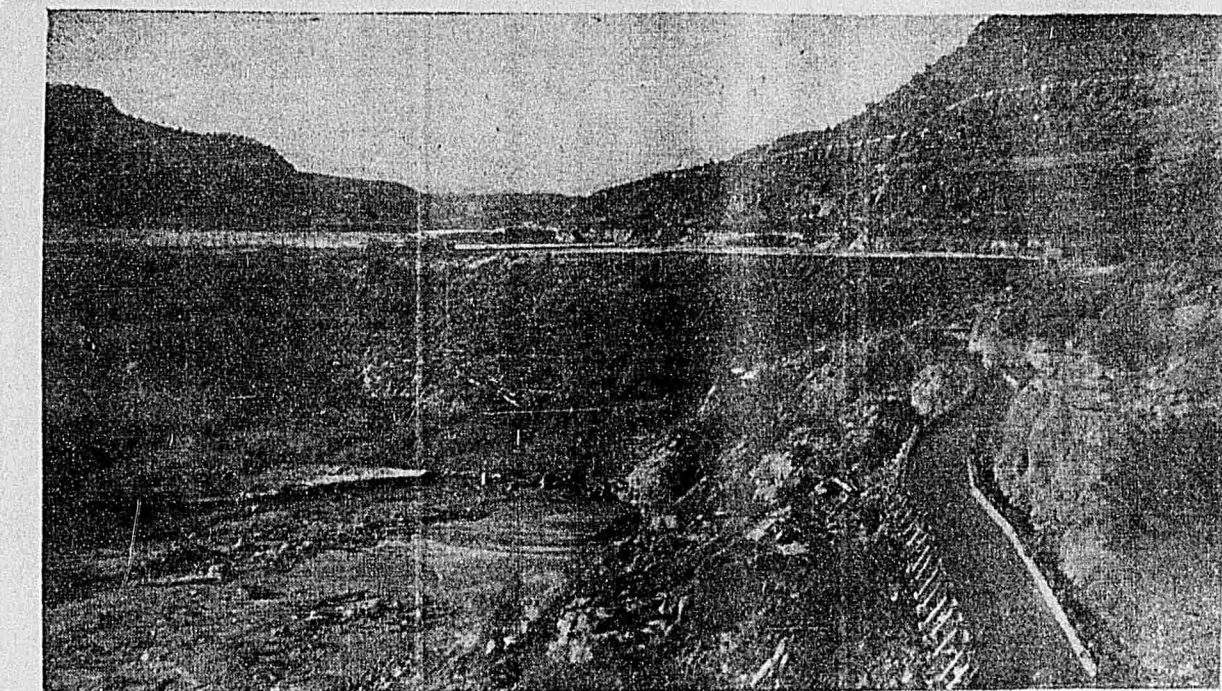


Kanab, at The Gateway of the Grand Canyon

KANE COUNTY, the most isolated, the least explored and the least exploited section of the state with the possible exception of San Juan county, has the additional distinction of possessing a total population of only 2,000, of which nearly half are residents of Kanab, which is the county seat. There are few among these 2,000 who do not possess a sublime faith in the county and the particular town in which they reside. This faith is fully justified. To discount the fact that there are only four small streams of water capable of being used for irrigation purposes, extensive and diversified farming has produced a surplus of all necessities to be procured from the soil with enough fruits to supply a great deal of the demand of less favored localities farther north. The population is confined entirely to the irrigable areas of the headwaters of the Virgin river before it enters the canyon of the Virgin, known as "the Barracks" and along a limited portion of Kanab creek. Just as it leaves Kanab Creek canyon, and along irrigable portions of Pahreah and Johnson creeks. This lack of water for irrigation purposes has given rise to a flourishing livestock industry which makes use of the vast stretches of rolling country in the eastern and southern parts where grass grows luxuriantly and there are enough steep springs and pools to water nearly all the stock that the country will support. The possibilities for enlarging the livestock business are immense especially along the lines of the more valuable species of sheep and goats. Vast bodies of coal have been located throughout the country and well defined veins

COMMERCIAL CLUB.

Practically the first decisive step looking toward the concentration of the various industrial interests of Kanab and Kane county has just been taken by the formation of the Kane Commercial club. The club had its inception in the realization that the forces for the advancement of the standing of Kane county to her proper place in the role of progressive sections of the state were so badly scattered that no appreciable effect could be attained until they were properly marshalled into a close and friendly relation with each other. There have always been a few men who worked constantly and conscientiously for the advancement of the different towns in the county and the sentiment for getting together and boosting has often been expressed, but failed to crystallize until a slight incident at the last county fair brought several men together with the result that the Commercial club was formed. The club plans to take a thorough inventory of the livestock industry, the agricultural and fruit raising industries and the possibilities along the lines of industrial development in natural products together with a classification of the values in coal, oil, minerals and timber. This having been completed, the placing of the different products to the best advantage on the market will be undertaken while a canvass is made to encourage the diversifying of present pursuits and the introduction of capital and larger development. With general social and economic conditions in good condition the greatest need of the county is better transportation facilities and toward



DIVERTING DAM, KANAB IRRIGATION CO.

range is controlled to a distinct advantage by the government and is used by the people of Kanab almost exclusively, with the exception of a part which is used by a California cattle company. The main forage plants are the black and white gamma and the coarser types of desert grasses except on high elevations, where good upland grasses grow. White sage, mountain rush and a few other brush help to make a diversity of feed. Poisonous plants grow to some extent, but do not constitute any serious menace. Cattle are in marketable condition throughout the year without having to be fed. The best grass forage comes from off the national forest; 50,000 cattle use the ranges tributary to Kanab the year round, and from 5,000 to 8,000 are sold to buyers for market each year. Thousands of broken and wild horses roam the ranges with the cattle, but it has been only lately that buyers, appreciating their extraordinary endurance and virility, have begun to purchase them in any number.

TIMBER RESOURCES.

There lies within the famous Arizona strip and extending over an area of approximately 800,000 acres, one of the most magnificent assets in the nature of an undeveloped resource that could be desired. Beginning at a distance of 25 miles southeasterly from Kanab and extending south to the Grand Canyon of the Colorado is the great timbered Buckskin mountains

best specimens are found, the trees on the lower elevation being somewhat scrubby and heavily branched. On the higher slopes and northern exposures the yellow pine gives way to stands of red fir, balsam and spruce. Using a diameter of 18 inches and over, four feet from the ground, as a basis a thorough cruise of the timber by conservative Forest Service men has resulted in the announcement that there is nearly 4,000,000 feet board measure of merchantable timber which can be removed within the next 25 years without endangering the chances for a second cutting at the end of that period. As the hauling weight of the timber when made into lumber and shingles and ties will be between three and four pounds per board foot there will be between 12 and 16 billion pounds to transport distances of from 25 to 500 miles before reaching good markets. This timber is all within the boundaries of the Kanab National Forest and all work looking toward the development and use of this great timber supply will be supervised by experts of the Forest Service.

GAME PRESERVER.

The Grand Canyon National Game Preserve one of the very few of the game preserves under the supervision of the Government is located within the boundaries of the above named National Forest. That its boundaries will be extended to include some lower country more suited to



CAMP WOOLEY AT BRIGHT ANGEL.

The timber, which at present is very little used, is bound to play a very important part in the future development of Kanab. It consists mostly of Yellow Pine ranging from ordinary quality to the very best finishing material to be found anywhere outside of the great redwood and fir districts of the Pacific slope and the white pine forests of Idaho. The true forest begins at an elevation between six and seven thousand feet. It is between the seven thousand and nine thousand foot elevation that the

several types of game which it is desired to preserve, it quite possible since many prominent people, including the whole of the Utah delegation in Congress are in favor of the step. This will make it possible to care for not only the 5,000 deer which are there now and which remain mostly on the upland portions but also the game which is more numerous in the lower country and which game which do better on sheltered lowlands and broad rolling stretches like the buffalo and the antelope.

G. C. TRANSPORTION CO.

There is one company organized in Kanab and operating in what is called the Arizona Strip which will possibly do more toward inducing a railroad to build through this country than any other organization.

For 15 years Hon. E. D. Woolley worked against hard times and indifference trying to organize a company to attract foreign capital and to build a trail and tramway across the Colorado.

Six years ago his efforts were at last crowned with success. A few of Kanab's prominent men formed the Grand Canyon Transportation company, which has now cut a trail for 13 miles from the sylvan scenery in the top of the Kanab down into the land of thorns and lizards in the bottom of the Grand canyon; and has stretched a 500-foot cable across the river and is now ready to pull the anxiously waiting tourists across the turbulent stream in an iron cage swung on the cable from one granite abutment to another.

Then the diligent efforts of Mr. Woolley, Senator Snodgrass and Sutherland, Representative Howell and other prominent men of the state have already visited this section and are all enthusiastic over the possibilities here for a rail and an automobile road to connect, through the Tramway company, with the excellent service of the Santa Fe, which terminates at the El Tavor hotel on the other brink of the canyon.

It is because of the railway company's attainments that Kane county feels justified in claiming as her rightful improvement the much-talked-of automobile road through the southern part of the state. Such a road from Marysville to Kanab would benefit more people who need it than one would through any other country district, as it would pass through the three counties of Piute, Garfield and Kane. And then when you get to Kanab you don't have to turn around and go back; but can push on and revel in the wonders of the Grand canyon and admire the novelties of the Roosevelt national game preserve.

ANGORA GOAT INDUSTRY.

It is now becoming quite generally known throughout the state that in southern Utah is growing an industry which, from its very nature and intrinsic worth is forcing itself upon the attention of farmers and live stock breeders in general. The Angora goat industry which really started only a few years ago, but which, owing to the skilled management of a few who have had it in charge, has doubled itself many times.

In Kane county the Angora is fast gaining recognition and promises soon to outstrip all other live stock industries as a source of wealth. The men that are interested in the business are teaching by practical example that there is a new and probable way to glean money from the now worthless vegetation that grows abundantly in

the deserts or in the mountains of every climate.

An association has been formed to foster the industry in its general aspect. Its name is "The Utah Angora Goat Breeders' association" and has as its officers some of the leading citizens of the county. J. N. Johnson is president; Frank Little, vice president; J. R. Hamblin, secretary and treasurer; E. D. Woolley, J. N. Johnson, J. R. Hamblin, John Ford, Frank Little, F. A. Lundquist and J. N. Hamblin, executive committee.



Imported Goats

J. N. Johnson and Hamblin Brothers were the pioneers in the business and have since figured as the leading individuals in fostering its growth. Under difficult circumstances these men have been untiring in their efforts to place the business on its present permanent basis. The very best blood obtainable has been secured from time to time by personal selection of these gentlemen from the best flocks of the world. Such purchases have necessarily been expensive, but as a reimbursement they have improved the quality of their stock till they are now considered the best.

Three large shipments of angora mutton have been made from this section to the leading meat markets of the United States. Also many carloads of mohair have been sold to factories in the east at very satisfactory prices.

SHEEP.

The principal wealth producer for the southern part of the state is the sheep industry. In Kane county there are some 70,000 head of sheep owned and many transient herds that range here.

The sheep average from seven to eight pounds of wool per head a year, which sells for 10 to 20 cents per pound, aggregating a yearly income of some \$35,000 for wool alone. Besides this revenue there are about 14,000 head of weathers shipped out of the country yearly that net in the neighborhood of \$3 per head. Of course these sheep are owned by a comparatively small number of men, but the money has to be scattered among a great many people, as the animals are kept in about 35 bands and require an average of three men to the herd, besides shearers, to tend them. So that in comparison with the whole population of the county it can be readily seen what a large percentage of the people get their livelihood from the sheep industry.

The sheep men are banded together in an organization that has, by its unity, done much good for the industry of this country and in the selection of president they did a rather novel thing, as Jonathan Heaton, the present incumbent, is also president of the Cattle Men's union, thus showing that Kane county is in a great measure free from

the usual strife between the sheep and cattle men, and are all working harmoniously for the upbuilding of the district.

BOWMAN & CO.

Through all the storms of prosperity and hard times of the last 20 years, the firm of Bowman & Co. of Kanab has stood as solid as the rock of Gibraltar and like that tower of strength it has come out of every storm swept clear of muck and ready and willing to fight the battle with the elements of dissolution.

And with the sensible policy of helping itself by helping others; with the best stock of goods in this section of country; with a capitalization of \$50,000, and good conservative business men at the head, Bowman & Co. expect to reap a big share of Kane's present and future prosperity.

GLAZIER & CO.

The firm of Glazier & Co. has been doing business in Kanab for the last five years. The first year it did a business of \$12,000 and has gradually increased until last year their cash amounted to some \$20,000. This increase and the business ability of the manager, Mr. John W. Glazier, is better appreciated when we know that this amount of business was done in a paid up capitalization of only \$15,000.

KANAB EQUITABLE.

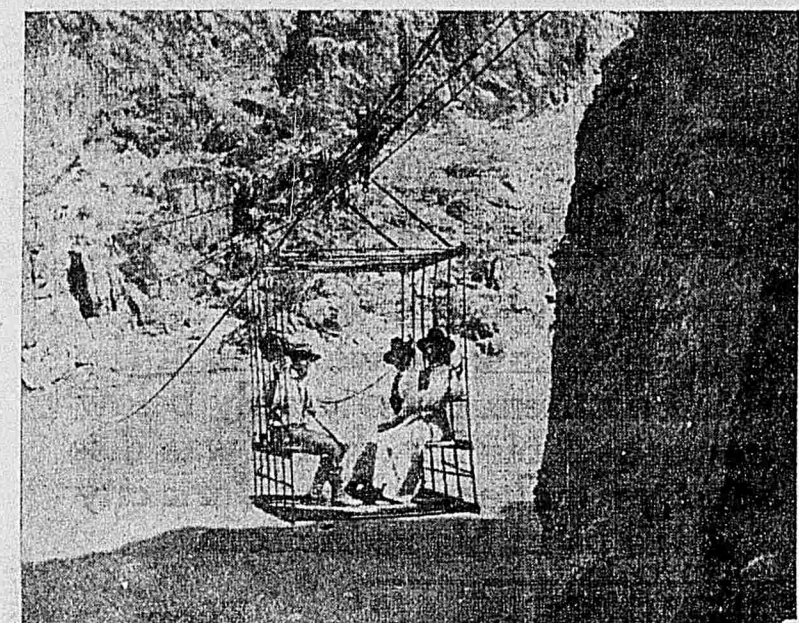
Although the Kanab Equitable has only been running a little over a year it has made a remarkable showing. By its policy of scattering the stock among many persons to draw best trade and by paying merchandise premiums of 3 per cent on purchases it has made the older establishments "sit up and take notice."

Mr. Pugh, the manager, is one of the most progressive business men in the town, and the one to whom most of the honor of the new and beneficial system of cash on delivery is due.

GARFIELD COUNTY TELEPHONE COMPANY.

Incorporated in 1892, the Western Union Telephone Co. took out its telegraph instruments in the southern part of the state and installed telephones which it operated till 1903, when it sold its line from Tropicville to Kanab. The purchaser soon extended the line to the other towns of the county and installed private phones, thus making it possible for the farmer on his farm to communicate immediately to every town in the county and keep himself posted as to the daily happenings of the county. The matter took so well with the people that it was decided to drive the line north to Marysville, a distance of 150 miles, and give the people of Garfield and Piute counties the advantages of telephone communication. The Garfield County Telephone Co. was incorporated for this purpose May 15, 1904.

That fall the line was built to Marysville and so the company had to establish an exchange at Kanab, Panguitch and Junction, for the accommodation of its many subscribers. The subscribers are given the use of the entire line and that rates are so cheap that only five subscribers have given up their phones during the five years of operation.



GRAND CANYON TRANSPORTATION CO.

Tramway Across Colorado River at Bright Angel Trail, Connecting North Side of Grand Canyon With South Side and Santa Fe Hotel Eltovar.

of valuable metals have been uncovered in the northern portions, including large deposits of copper. Timber in large quantities grows along half the northern portion of the county and on the south, in Arizona, but tributary to this section are vast virgin stretches of yellow pine and fir. It needs only a better system of good roads and a railroad to galvanize into life industrial and commercial potentialities that will make this one of the richest sections of the state. To cap the climax there are scenic attractions not to be surpassed anywhere and the magnificent Grand Canyon of the Colorado is within easy distance and it is well to know that the view from this side is much superior to that gained from the southern side.

Kanab, with a population of approximately 1,000 is busy for its size and possesses some of the best stores in southern Utah. A bank is under consideration and will in all likelihood be established. The city is supplied with water for domestic use by a pipe line and reservoir system. Considering the area of land under cultivation, the people of Kanab have the highest priced irrigation system in the United States. Seventy thousand dollars have been expended on dams, ditches and storage reservoirs in order to irrigate 500 acres of land. And the most won-

that end the club will lend all of its energy.

CATTLE AND HORSES.

On account of farming being confined to very small portions of the whole area of the county, stock raising has become the most important single industry. Cattle raising receives more notice than anything else. Thousands upon thousands of acres of both winter and summer range surround all of the small towns in the county. The best grass forage comes from off the national forest; 50,000 cattle use the ranges tributary to Kanab the year round, and from 5,000 to 8,000 are sold to buyers for market each year. Thousands of broken and wild horses roam the ranges with the cattle, but it has been only lately that buyers, appreciating their extraordinary endurance and virility, have begun to purchase them in any number.



Ghirardelli's Ground Chocolate

is a food drink for young and old that pleases the palate—strengthens the body—builds up the nerves—quickens the mind. It instills qualities in young and old which produce perfect contentment and perfect health and allows one to give

A Smile All the While

Ghirardelli's Cocoa is a standard combination of the cocoa bean. It is made with painstaking care and after 50 years of manufacture stands to-day a perfect product.

30 cups of a delicious drink 25c

COOPER S.F.

JUST TEN DAYS MORE! OF THE \$3.00 RATE.

DRS. SHORES GIVE FINAL WARNING THAT ON JANUARY 1ST THE SPECIAL \$3 A MONTH RATE FOR ALL CATARRH, CHRONIC DISEASES WILL POSITIVELY BE WITHDRAWN. IT IS NOW OR NEVER. If you want to be cured for the lowest fee ever charged by Reputable Expert Specialists, take advantage of Drs. Shores' generous offer during the week.

CATARRH, ASTHMA, HAY FEVER, DEAFNESS AND LUNG TROUBLES

Or any complications of same. If you apply to Drs. Shores at once you can be treated until cured, for the Low Rate of \$3 a month—all medicines free—IF YOU SUFFER FROM ANY CHRONIC AILMENT OF THE

Stomach; Liver, Kidney, Bowels, Nerves, Etc.

Drs. Shores offer you their expert services at proportionately low rates if you apply this month.

Not a Cheap Treatment, but the best Treatment at practical Cost of Medicines

Given by Drs. Shores to enable all who suffer to get cured without feeling the expense and to spread the fame and success of the Drs. Shores' treatment for Chronic Diseases among the sick and afflicted.

If You are Ailing Don't miss this Opportunity



DR. A. J. SHORES.

\$3 We Also Cure By Mail \$3

Do not despair because you live at a distance from the city. Drs. Shores' new system of HOME TREATMENT makes it easy to get expert advice and treatment at home. WRITE for their new symptom list and take advantage of the grand special offer. CONSULTATION FREE, whether you take treatment or not, the advice costs you nothing.

Write IF YOU LIVE OUT OF TOWN

WE TREAT AND CURE

Catarrh
Deafness
Asthma
Lung
Trouble
Rheumatism
Epilepsy
Hysteria
Hay Fever
Insomnia
Stomach
Liver
Kidney
and
Bladder
Trouble
And all
Chronic
Nervous
and
Private
Diseases.



DR. G. W. SHORES.

DANGER SIGNALS

Do You Cough?
Does Your Head and Nose Stop Up?
Do You Hawk and Spit to Clear the Throat Before Speaking?
Do You Snore at Night?
Do You Gasp for Breath While Sleeping?
Is the Breath Foul?
Do You Have Headaches?
Are the Eyes Weak? Is Your Hearing Failing?
Are the Lungs Weak? Sounds in the Ears?

These and all other Catarrhal symptoms can be quickly cured at trifling cost if you accept Drs. Shores' invitation THIS MONTH, \$3 a month medicines free covers all Catarrhal Chronic ailments—but the special offer closes December 31st—Don't delay—if you prefer a Doctor to the Undertaker.

A SPECIAL DEPARTMENT FOR MEN.

The same wonderful skill and experience that has enabled Drs. Shores to cure chronic diseases, enables them to cure all private ailments—Drs. Shores never discuss or betray the confidence of their patients, and everything is strictly confidential. Prices the lowest. Terms the easiest—either small weekly or monthly payments, as the cure progresses, or you MAY PAY WHEN CURED IN ALL PRIVATE TROUBLES.

An Exclusive Treatment for "WEAKNESS."

Drs. Shores long ago discovered that nearly ALL cases of so-called WEAKNESS in men was caused from DEBASED OR ENLARGED PROSTATE GLAND. Drs. Shores are the originators of their treatment for this common, yet little understood trouble—and their treatment is not given or EVEN KNOWN by any "Quack Doctor" or "Fake Medical Institute." In the world. By their original methods Drs. Shores CURE these so-called cases of WEAKNESS quickly, surely and cheaply.

Home Treatment Cures. Write for Free Symptom List if you cannot call.
OFFICE HOURS: 9 a. m. to 5 p. m. Evenings, 7 to 9. Sundays and holidays, 10 a. m. to 12. Consultation and examination free.

DRS. SHORES & SHORES, Expert Specialists
Houston Block, 249 SOUTH MAIN ST. SALT LAKE CITY.