

Rigby's Splendid Advancement During the Present Year

A RESUME of Idaho's growth and development for the year about to close, would not be complete without Rigby's advancement for the same period included. The town is forging ahead so fast that it is common talk up and down the country that "Rigby is one of the coming towns of eastern Idaho."

The town is surrounded by some 12 country settlements, each within seven miles and also at the point of Rigby's location in the great Snake River valley, the good tillable, well watered land is larger in extent than at any other place. Just north of the town the North and the South forks of this great river unite, run to the west some distance and then sweep to the south. This and the action of the water in the formative period of this huge val-

is attracting many new homeseekers into this favored locality. It is one of the best schools in Fremont county and the only one in eastern Idaho operating wagons. The per cent of punctuality and attendance has been raised from 60 and 70-40 practically 100.

MODERN WATER SYSTEM.

Next year Rigby will more than likely install a modern water system. She now has an up-to-date telephone exchange, electric lights and power generated by Snake river.

The Oregon Short Line railroad passes through the town, and passenger train service several times a day, each way, is given the people.

The best criterion of a town's importance is the banking institutions. A few years ago dubious people established Anderson Bros. bank here. This institution now often handles in a day's business over \$20,000, and has on deposit money of the farmers and others

and do far better by customers than any mail order house in the United States.

LARGE IN SCOPE.

The Rigby Hardware, Lumber & Manufacturing company, limited, is Rigby's oldest and most reliable firm. Its point of capital and business done, this firm eclipses all others in Rigby. Its main lines of merchandise carried are stoves and ranges, general hardware, farm and garden tools, paints, oils and brushes, harness goods, tin and granite ware, rope, hay, tools, pocket and table cutlery, lime, plaster and Portland cement, sash and doors, stock and season doors, farm implements, and a full stock of lumber and building materials. In connection with its well stocked lumber yard, the company operates a planing mill in charge of the best mechanic the country affords. It is needless to mention the above to the old customers of this company, but as the country is filling up with new people, it is perhaps necessary to call their attention to this business. It is needless to mention the above to the old customers of this company, but as the country is filling up with new people, it is perhaps necessary to call their attention to this business. It is needless to mention the above to the old customers of this company, but as the country is filling up with new people, it is perhaps necessary to call their attention to this business.

The town's development dates from the organization of this company, and today it maintains its place as the leading commercial institution of Rigby. While others have come and gone, this company weathers the storms, and certainly is entitled to the support of the people of the country who do their business in Rigby. Its enviable record and excellent reputation have been built up on fair and generous dealing, the only methods of business that insure permanency and growth.

GOLDEN RULE STORE.

Rigby's Golden Rule store is operated by the Bowers-Schwitzer company, limited, and the business management is under the immediate supervision of Mr. H. A. Schwitzer, who also acts as secretary. Ladies' and gent's furnishings, clothing, dry goods, shoes, hats, caps, notions, groceries and crockery are sold at wholesale and retail.

The Golden Rule store was started in 1903 on a capital of \$2,000, and today a stock amounting to proportions necessitate to sell \$150,000 annually is carried. The other officers of the company are B. C. Bowers, president, and C. J. Call, vice president.

The large increase in the business of the company is due to the untiring efforts of Manager Schwitzer, and this year the business done will exceed that of last year by fully \$25,000. Today the Golden Rule store is the largest of its kind in the Snake River valley. The building occupied is a two-story brick structure, covering a ground space of 120 by 54 feet. It is modern in every sense of the term and was erected along ideas advanced by Mr. Schwitzer.

By selling the best goods at the lowest prices, and through carrying a full stock of general merchandise, the Golden Rule store has built up an enormous business. The store enjoys the cash trade of the surrounding settlements, including Swan valley, and is competing successfully against Idaho Falls. The Golden Rule employs an efficient and obliging corps of clerks, and guarantees satisfaction to customers. To give value received and please the people is what the store name implies.

The Golden Rule store does a strictly cash business and one of its rules is, "one price to all."

Manager Schwitzer is well fitted for the business in that he has had 26 years' experience in mercantile business. He has performed the present establishment after the mammoth store of the Ames & Doepke company of Cincinnati where for years he was a valuable employee.

Some better idea of the largeness of the Golden Rule store can be had when it is stated that during the holiday rush 18 clerks are employed to wait upon customers.

STRONG INSTITUTION.

Rigby is justly proud upon having one of the oldest and strongest banks in the great Snake River valley. The institution is the Anderson Brothers' bank, and while this bank is the only one in Rigby, it will probably so continue for some time to come, because of the able manner in which its affairs have been conducted by J. H. Steele, the capable cashier.

The institution is incorporated with a capital stock of \$10,000. It was established five years ago and the business has steadily grown until today it has grown far beyond even the fondest expectations of its promoters. The present officers and directors of the bank are:

C. C. Campbell, president; George A. Cordon, vice president; J. H. Steele, cashier; directors, C. C. Campbell, M. H. Hitt and J. C. Anderson.

There is no need to comment on the safety and solidity of any financial institution in Idaho which is handled by men identified with Anderson Brothers. For years the name Anderson in Idaho financial circles has stood for everything that could be rightly termed proper and careful in banking.

Active management of the Rigby bank affairs is in the hands of Mr. J. H. Steele, cashier. He is rated a careful and conscientious banker.

AN UP-TO DATE DRUG STORE.

One of the neatest and best arranged drug stores in Idaho is conducted in Rigby by J. A. Langtry, a graduated pharmacist. The store is operated under the style of the Red Cross Drug

company, limited, and connected with the company is a competent physician and surgeon. This store has by long odds the best patronage in that section of Idaho. All prescriptions compiled by the Red Cross Drug company, limited, are sure to be prepared from the very best drugs obtainable in the market. Prices are ever consistent with the very best service.

BEST HARNESS MAKERS.

The recognized best harness makers in and about Rigby is the firm of George D. Hoggan & Sons. The business was established in Rigby four years ago by George D. Hoggan. The firm makes a specialty of harness, saddles, collars, bridles, whips, spurs, etc. Another feature of the business is repairing. Making to order of hand-made harness is an extensive business with the firm and the community drawn from is the entire farming country about Rigby. Several times since engaging in business in Rigby the firm has been obliged to enlarge its quarters.

RIGBY'S LEADING LAWYER.

George E. Hill, Jr., does practically all the law work for the people of Rigby and vicinity. He also services fire and life insurance. Communicate with him for anything wanted in the above lines.

No person should be without the safeguard of insurance in soliciting your business. Mr. Hill will be pleased to quote rates upon application.

BEAR HUNTING IN SWEDEN.

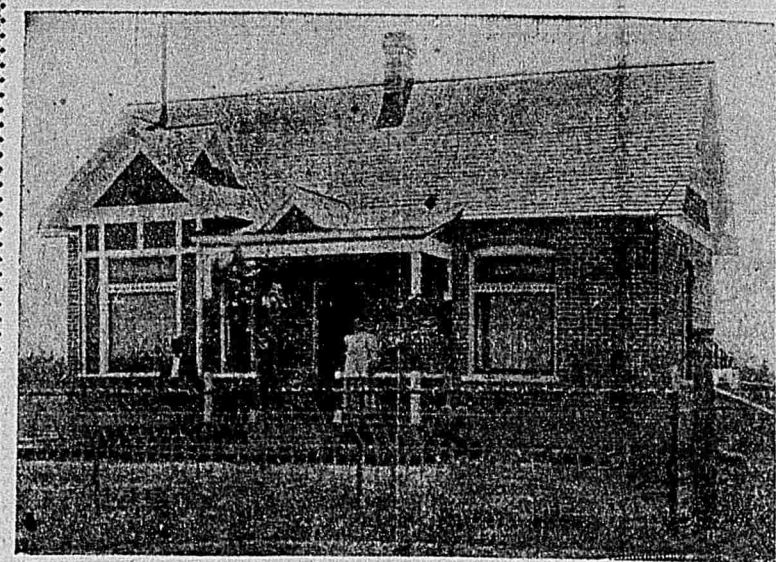
AN ARTICLE on bear-hunting in Sweden is contributed by Ben- tress Gardner to Country Life.

The article, which is translated from the sporting notebook of Count

Eric von Rosen, contains the following interesting experiences of the count,

who says: "I certainly have had, as have all other big game hunters, one or two narrow escapes, but so far my luck has carried me through, and Bruhn has never got the best of it. I once found myself in tight quarters with an overgrown specimen of the Slogbjorn variety. He had chosen for his sleeping place the center of an open tract where, while the giant forest trees had long since been burned down, dense bushes had grown in their place, and these, snow-laden and frost-stiffened, obdurately impeded my way. It was no easy task to advance noiselessly here, where every twig was a snare to entangle my long ski. I stumbled, fell and lay floundering in the deep snow. Simultaneously my bear loomed forth, on the near horizon. He might, I considered, have selected a more auspicious moment for his manifestation. Prone as I was, for ski are infernal machines when speedy extrication is desirable, I took careful aim and fired; my shot went home, and certainly my good genius directed it, for had I missed I merely wounded, my position would have been most unenviable. When we came to skin my capture we found an old bullet embedded under the right shoulder blade, which shows the wonderful vitality of these animals.

"I do recall one real and very narrow escape in which my friend Broberg shared, and it happened in this way. We were out together one morning recombering—or, as it is called, as I may term it—around a hill which, covered thickly with clustering pine trees, seemed a likely spot for Bruhn's hibernation. We were seeking out some



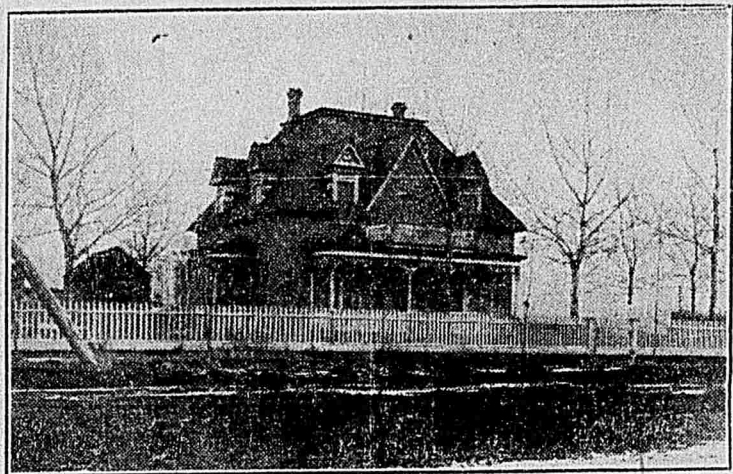
RESIDENCE OF H. A. SCHWITZER, RIGBY, IDAHO.

open patch for ingress, when an old bear, scenting probably the coming of the foe, dashed out from the thicket and as quickly turned tail for cover as we opened fire on him. On the summit of the hill, up which we waded in secure immunity, owing to the dense woodland, he made stout front against our two bear hounds. Broberg mounted the hill with all speed on one side of the thicket, and I on the other. Broberg first got within range of the quarry and fired two shots.

"At the same moment the beast savagely attacked our dogs, and on their fleeing to Broberg for protection, followed up his advantage and made for his more redoubtable assailant. Broberg had spent his shot and had no alternative but to throw himself into the thicket. Thus I, reaching the summit in my turn, came in for pressing attention; but, in the act of firing I slipped off my ski and the bullet missed. However, the bear was at such short range, that the report frightened him. He circled around, then turned again and attacked me afresh. I had just one shot left, and I must, therefore, place my bullet well and kill him instantly. The moment was tense. Roaring savagely and with snapping jaws, the grim thing rushed upon me. I aimed at the forehead, fired, and the bear dropped lifeless on the snow. My bullet had hit him in the right eye."

LEGAL BLANKS.

Of every character and description, arranged from the best legal forms, and brought strictly up to date. A full supply always on hand at the Deseret News Book Store.



HANDSOME HOME OF BISHOP GEORGE CORDON, AT RIGBY.

ley, deposited here rich soil, and more of it, than at any other point in Idaho, that is subject to easy irrigation. To redeem the land all that was necessary in the early days of its settlement, was for a few farmers to band together and construct a canal from the river's bank to their new farms, all through level land and only requiring two or three plowings to be taken out to make the canal and bring the water on the land. Most of the canals irrigate land within half a mile from their head.

BEST WATER SYSTEM.

This has resulted in not only the best water system in any of the mountain states, on account of the inexhaustible supply of water, but the most inexpensive. Here the farmers own their own canal enterprises, and have no heavy water taxes to pay.

UNLIMITED WATER RIGHT.

There is now an area of dividing the big farms of this valley. The people have begun to realize that what is needed to utilize and enjoy the great natural resources of this country, is 10 times the people now living here, notwithstanding they are becoming very numerous. Good improved farm lands, with an unlimited water right—water that the farmer can use all the time whenever he wants to, and where there are no turns about it either, but continuous and in such quantities as desired—can be had from \$50 to \$100 according to location.

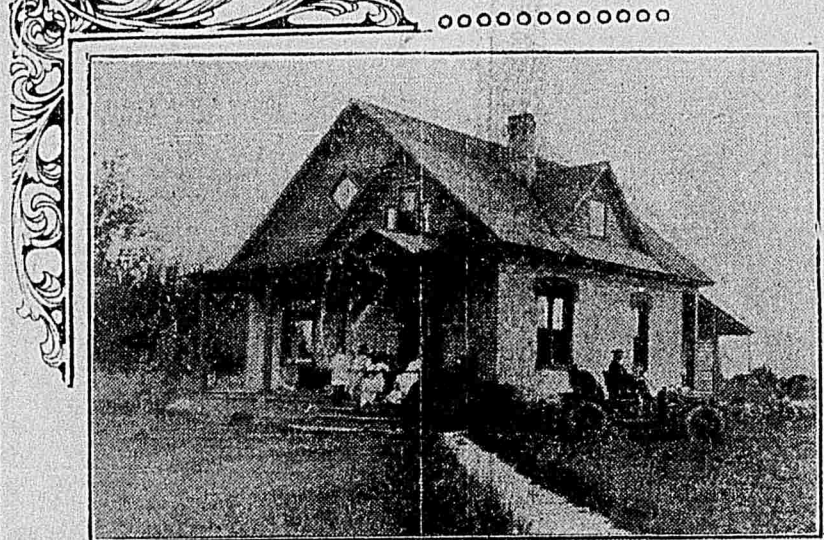
NEW IMPROVEMENTS.

Since the last issue of the Christmas News was published 20 new residences have been erected in and adjacent to the town. Electric lights have been installed in nearly every home and business house, as well as lighting the streets. The public streets have nearly all been graded and street crossings put in. The Smith block, two-story and basement, built of cement blocks, the doubling of the capacity of the Peck Opera House, making it the largest in the county, the foundation of the Rigby Furniture block with the material on the ground for the completion of the building, the construction of the Howard hotel, the Wippermann brick block, the building of the Rigby Elevator, the company's large 50,000 bushel grain elevator, equipped with modern machinery, the installation of electrical power for the operation of the Rigby planing mill, the Rigby Trolley, rails the above mentioned elevator, have all been accomplished. Seven hundred dollars has been expended on improvements in the L. D. S. stone church, making it the equal of any in the country.

IMPROVEMENT OF SCHOOLS.

The thing, however, that Rigby people feel the most pride in is the enlargement and improvement in her already excellent school. The magnificent building has been completed, and four more teachers, making 10 in all, have been employed. Eight specially constructed school wagons have been purchased, and these go out from five to seven miles and bring in all the school children living outside of town, thus giving the children living away out on some farm, with their parents, the same school facilities as those who live in the shadow of the temple of learning. These wagons are closed up in cold weather, run on schedule time, bring the children to school and take them home again, and are a great success. This system consolidates a large area into one district and by this means the raising of a large amount of money makes it possible to have a big school, including high school work, equal with those in any city of the land.

People desiring to till the soil, have no objection under this system to living five or seven miles from town, and all objections in regard to poor schools and long distances are overcome. This



RESIDENCE OF GEO. E. HILL, JR., RIGBY, IDA.

amounting to \$100,000. Such conditions need no further comment.

ELECTRIC THRESHING.

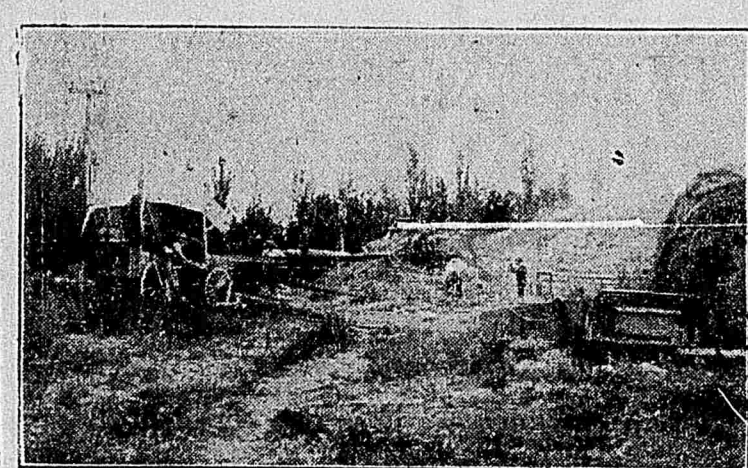
The first electrically operated threshing machine and hay stacking apparatus, was successfully undertaken last summer by Commodore T. W. Lee on his big farm south of town, and other adjacent farmers. The result of this is the organization of the first Pioneer Electrical Threshing company in the world. The General Electric company of New York, sent two representatives to investigate this new idea of Rigby's progressive farmers. Letters inquiring about it have been received from France, Italy, Germany, King 150-ward of England, and other foreign countries, and many states of the union.

QUALITY STORE.

The Quality store of Rigby is all that its name implies. There was a time in the country, the forerunner of the Rigby store today. Its trade extends into Grant, Lewiston, Merion, Annis, Lorenz, Labelle, Rudy, Poplar, Swan and Camont valleys; also Star valley, Shelton and Elva.

The quality store is in charge of S. B. Gough, a merchant of 15 years' experience and he delights to look after the wants of the people.

So rapidly has the business increased during the past year that it was necessary recently for the Quality store to secure additional warehouse and basement room. Likewise an up-to-date electric lighting system was installed. In other words, the store has progressed with the growth of Rigby in every respect. Recently a new and elaborate sign was constructed and the store is known far and near throughout that section of the Snake river valley as a meeting place for farmers. Rest rooms are provided for women and one of the latest announcements of Manager S. B. Gough is that the Quality store can compete with



FIRST ELECTRIC THRESHING MACHINE.

Only One in the World, Operating at Rigby, Idaho.

ST. MARK'S HOSPITAL

INCORPORATED 1878.

CAPACITY 150.

Easy of Access

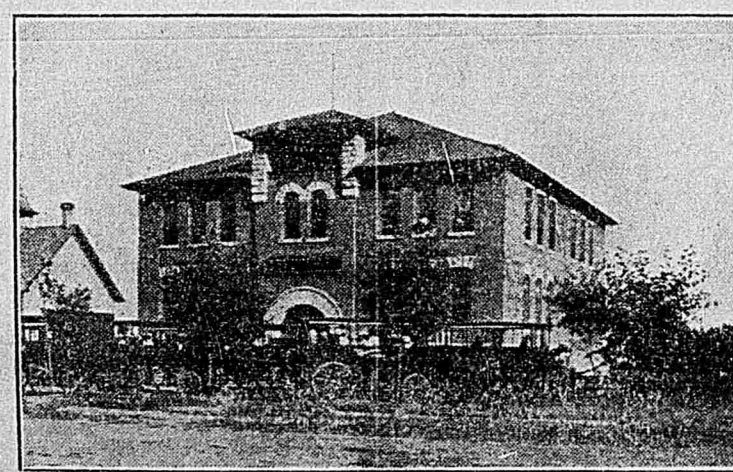
Center Street and Warm Springs Cars

Pass the Doors.

An Efficient Staff of Physicians, Surgeons and Specialists. Corps of 40 Nurses.

We Have Every Facility for the Proper Care of Maternity Cases.

FANNIE D. LEES, Superintendent. T. S. PENDERGRASS, Business Manager.



SPLENDID PUBLIC SCHOOL AND WAGONS FOR CONVEYING CHILDREN TO AND FROM THE INSTITUTION AT RIGBY DAILY.

Did You Ever See a Baldheaded Indian?

Use Sage Brush Hair Tonic. NATURE'S remedy for DANDRUFF and FALLING HAIR.

Prepared from the leaves of the Western wild sage (Sage Brush) to which has been added the best germicide known to science and enough perfume to make it a delightful dressing for the hair.

UNDOUBTEDLY the best Hair Tonic ever discovered.

GUARANTEED TO DO ALL THAT IS CLAIMED FOR IT OR YOUR MONEY REFUNDED.

Who ever heard of guaranteeing a hair tonic before? But that is just what the manufacturers of this preparation are doing.

ASK YOUR DRUGGIST.

ASK YOUR BARBER.



Prevent Accidents & Save Money

by having your boilers insured and Inspected under the Direction of

Hartford STEAM BOILER Inspection and Insurance Co.

the only company which makes a specialty of, and does exclusively, a steam boiler inspection and insurance business.

Prevention is the aim, but in case of explosion the company pays for the damage to property, loss of life and injury to persons.

Assets Over Four Million Dollars.

H. J. Hawley, Inspector and Special Agent

HEBER J. GRANT & COMPANY

RESIDENT AGENTS.

Home Fire Building, Salt Lake City, Utah.

PHONES 500