

Finishing Touches on Inland Empire Exposition

EVERYTHING is practically in readiness for the opening on Monday morning of the great fair ever held in the inland empire. The Utah State Fair association have been planning and working with the result that when the gates are thrown open to the public there will be a display that will surprise even those who have been following the progress of the work of preparation. The completeness of the arrangements and careful attention to details will be noticed and the magnitude of the undertaking will be fully realized only after one has visited the various departments.

OPENING DAY EXERCISES.

The formal opening of the big exposition will occur Monday morning at 10 o'clock. The program will begin with a selection by Held's band, followed by the invocation by Rev. F. H. Short, J. G. McDonald, president of the Utah State Fair association, will make the opening address introducing the public and declare the fair officially open. President John R. Winder, who might properly be designated as the father of the state fair, will make a short address and a second number by the band will close the exercises. Immediately the spectators and attendants at the concessions will begin their activities and Utah's greatest fair will be on.

MANY NEW BUILDINGS.

As the plans for the fair progressed and the general public came to realize that it was to be an important event it became apparent to the officials that the buildings already on the grounds would not accommodate the exhibits that would be entered. Plans were accordingly prepared for temporary buildings to be used this year and they were assigned to special displays large enough to occupy an entire building. The old poultry house was turned over to the Agricultural college and the officials immediately began the preparation of a very extensive display. One entire building was assigned to the state university and a third building will be devoted to the mineral exhibit.

NEW POULTRY BUILDING.

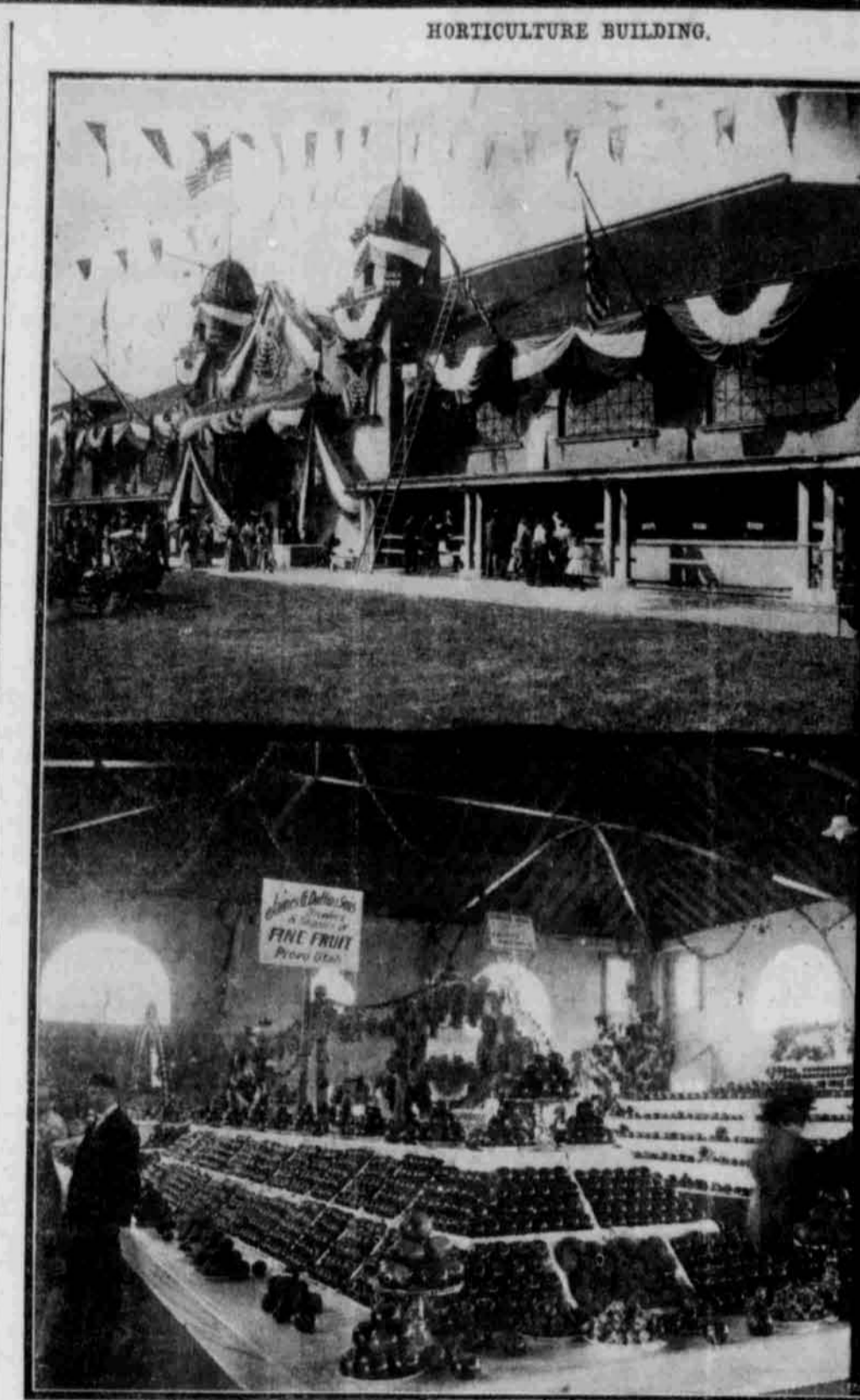
The necessity for a new poultry building has been urgent for several years past and as an appropriation was made by the legislature a magnificent new structure has been erected. It will be fitted with the latest improved pens, and is regarded by experts as one of the finest poultry buildings in the west. It will accommodate more than twice the number of birds than was possible to exhibit in the old building, and is in every way ideal for the purpose. This building faces on the main avenue, and is easily accessible from the main building. The entries in the poultry department are very heavy, and will nearly fill the new building.

NEW MINERAL BUILDING.

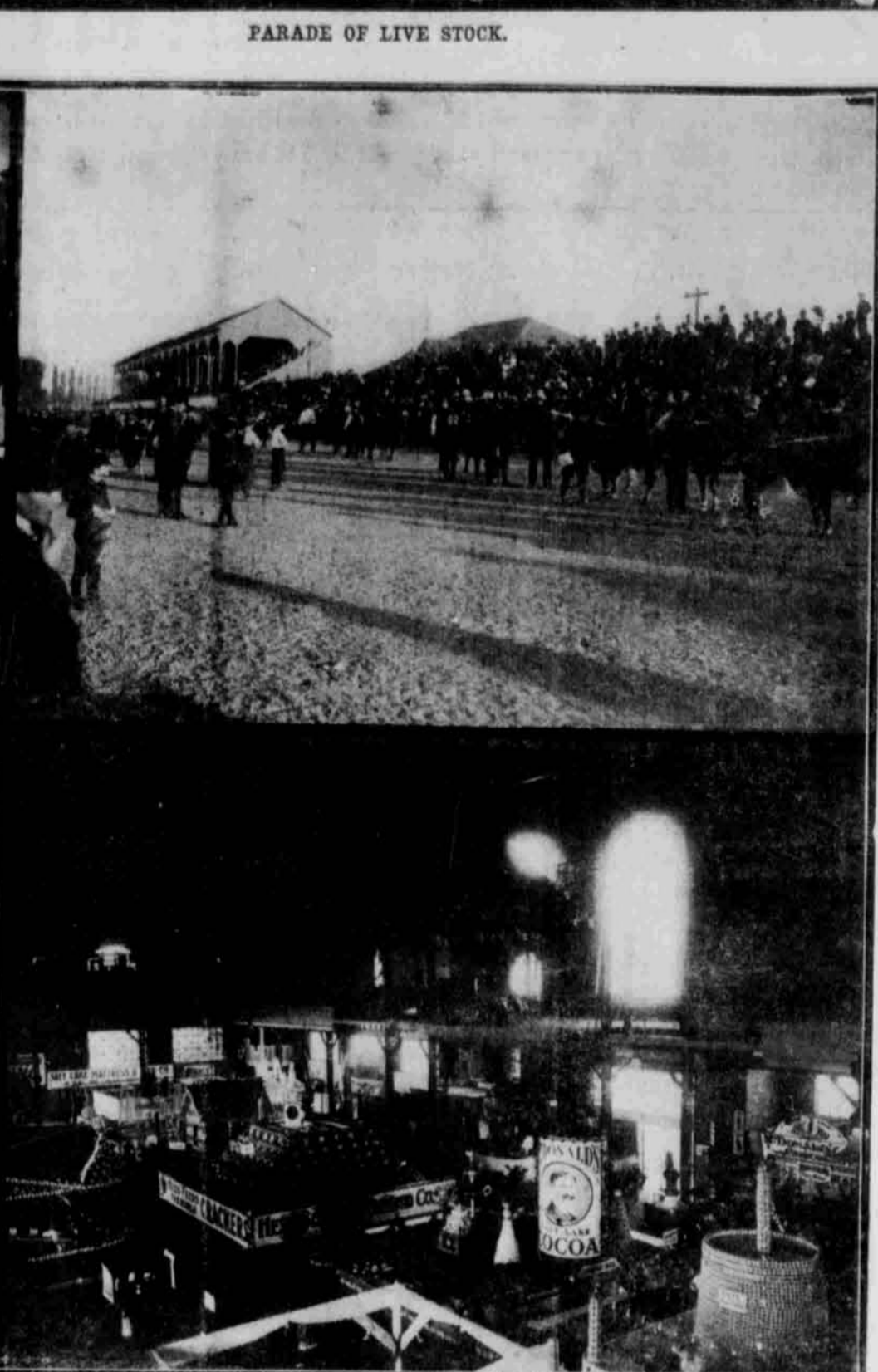
Between the horticultural building and the Agricultural college exhibits a new building 40 by 30 feet has been erected for the mineral exhibit, and will be used exclusively for that purpose. Harry S. Joseph and Jesse Cannon have been gathering ore samples during the summer, and have made a collection which includes samples from every important mine in the state. These samples will be classified, and labeled. Mining machinery will be included in this building, and many features of an educational nature will also find a place there. This building is but temporary but the display will be kept intact awaiting the erection of a permanent building for this department. Many prominent men have taken a personal interest in the exhibit, and many specimens which are very valuable have been obtained.

AGRICULTURAL COLLEGE.

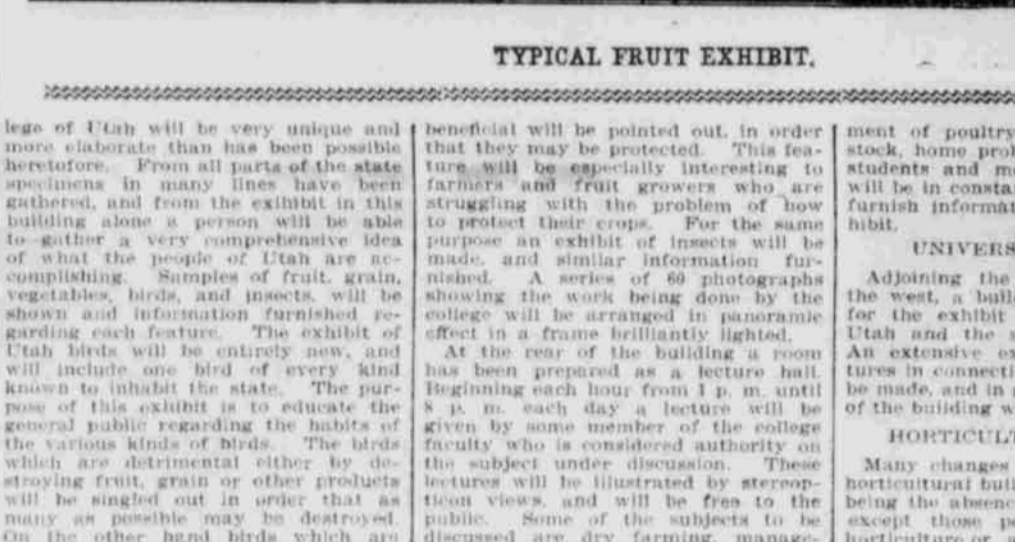
The exhibit of the Agricultural College of Utah will be very unique and more elaborate than has been possible heretofore. From all parts of the state specimens in many lines have been gathered, and from the exhibit in this building alone a person will be able to gather a very comprehensive idea of what the people of Utah are accomplishing. Samples of fruit, grain, vegetables, birds and insects will be shown and information furnished regarding each feature. The exhibit of Utah birds will be entirely new, and will include one bird of every kind known to inhabit the state. The purpose of this exhibit is to educate the general public regarding the habits of the various kinds of birds. The birds which are detrimental either by destroying fruit, grain or other products will be singled out in order that as many as possible may be destroyed. On the other hand birds which are



HORTICULTURE BUILDING.



PARADE OF LIVE STOCK.



TYPICAL FRUIT EXHIBIT.



MANUFACTURERS HALL.

beneficial will be pointed out, in order that they may be protected. This feature will be especially interesting to farmers and fruit growers who are struggling with the problem of how to protect their crops. For the same purpose an exhibit of insects will be made, and similar information furnished. A series of 60 photographs showing the work being done by the college will be arranged in panoramic effect in a frame brilliantly lighted. At the rear of the building a room has been prepared as a lecture hall. Beginning each hour from 1 p. m. until 8 p. m. each day a lecture will be given by some member of the college faculty who is considered authority on the subject under discussion. These lectures will be illustrated by stereoscopic views, and will be free to the public. Some of the subjects to be discussed are dry farming, manage-

ment of poultry, management of live stock, home problem, etc. A corps of students and members of the faculty will be in constant attendance, and will furnish information regarding the exhibit.

UNIVERSITY OF UTAH.

Adjoining the new art building on the west, a building is being prepared for the exhibit of the University of Utah and the state school of mines. An extensive exhibit of various features in connection with the school will be made, and in many ways the interior of the building will be made interesting.

HORTICULTURAL DISPLAY.

Many changes will be noticed in the horticultural building, the principal one being the absence of all other features except those pertaining directly to horticulture or agriculture. Elaborate

decorations have been made including a big flower bed in the center of the building. Some magnificent paintings adorn the walls, and these have been made a part of the general scheme of decoration. Every inch of space in the building has been assigned and, judging from the exhibits already in place, the showing in this department will be far ahead of any previous fair. In some cases one exhibitor has entered specimens of every kind of fruit. This is evidence of the unusual interest being taken by the fruit growers of the state.

AMONG MANUFACTURERS.

In the manufacturers' building a merry war is on among the exhibitors, the cause being the keen rivalry between them over the capture of the big silver loving cup offered as grand prize

for the best exhibit. The trophy is nearly three feet high, and is handsomely decorated. It is the first time the association has offered such a prize, and it has been the means of stimulating interest among the manufacturers. The exhibits are being built upon a very elaborate scale, and the decision of the judges will be awaited with interest. The demand for space in this building has been greater by 50 per cent than ever before, and Supervisor Hewlett has had a difficult time in placing the exhibitors to the satisfaction of all. The work has been completed, however, and most of the exhibits are now in place. The scheme of decorations adopted in this building is especially appropriate, and the many electric lights used add greatly to the effect. The judges in this department are C. N. Strevel, Henry M. Dinwoody and Walter Naylor. Their decision will

MADE ON MONDAY.

LIVESTOCK ENTHUSIAST.

The superchairs of the livestock department have been literally swamped by the many entries made, and at the last moment it was necessary to build an additional section of stalls in order to accommodate all the exhibitors. The new stalls have been erected on the north side of the grounds and will accommodate 100 animals. The main feature in the livestock department will be the big parade scheduled for Thursday afternoon. In this event all the winners will appear as well as a large number of fancy stock brought in especially for this purpose. Gov. Wray and his staff, together with the officials of the fair, associated with the review of the parade in the grand stand.

SPEED DEPARTMENT.

For the first time in the history of the fair association every event on the racing program has been filled. There will be no changes made from the original plans, and every event will be pulled off as scheduled. The big feature of the race meet will be the state fair handicap on Tuesday afternoon, and the Inland Empire exposition handicap. For the first time only Utah horses are entered. The purses for each of these events amount to \$500, and as both events have the limit number of entries some real races are assured. The entries for the racing meet on Monday close tonight, and entries for each day's races close the week will close the previous night.

AMUSEMENTS GALORE.

Never before in the history of the fair association have amusements been given such prominence as this year. The list is headed by Dr. Carver's big wild west show, which includes 25 horses and 25 men. The show will be given every afternoon and evening inside the race track. The company arrived this morning from Chicago and will be ready for the first show Monday afternoon. With this show come the high diving horses which are the features of the free attraction. Twice each day the horses dive from a platform 35 feet high into a tank of water below. A standing offer of \$100 is made to any person who will swim one of the horses in the dive. Other features in the free attractions are the Genette sisters in a sensational double trapeze act, the Fries Brothers with their trick box car, Enloe Hiram and his educated pig, the Dalton in a thrilling barrel jumping performance, and Mike Zella with her troop of performing dogs.

MANY SHOWS ON "DESERT."

The amusement avenue designated as the "Desert" contains a big list of attractions gathered by Secretary E. E. Smith from all parts of the United States. Mr. E. E. Smith is authority for the statement that such an aggregation of first class shows has never before been assembled at a state fair. More than ordinary precautions have been taken to get shows of a high standard, and the contract with each company contains a clause that if anything offensive in the slightest degree occurs the contract will be forfeited and the show will be closed up. The grounds are filled with concessions of different kinds, and the big exposition will be a scene of gaiety and pleasure. All over the grounds electric lights have been strung in every direction and night will be turned into day. The work of preparing the grounds has been completed and the new roller walks have been rolled until they are nearly as hard as pavement. The position will be open every day up to and including next Saturday.

SLIGHTLY COLDER WITH SNOW.
When you see that kind of a weather forecast you know that rheumatism is at hand. Get ready for it now by getting a bottle of **Relief** Snow Lotion. Finest thing made for rheumatism, chilblains, frost bites, sprains, stiff joints and muscles, all aches and pains. 25c. 50c. and 1.00 a bottle. Sold by J. C. M. L. Drug Store, 112 and 114 South Main Street, Salt Lake City.

HAIR GOODS.

Our entire stock of swatches, pads and all kinds of hair goods will be sold regardless of cost this week. Salt Lake Clothing Co., 297 S. State St.

BOTH BOYS SAVED.

Louis Hoon, a leading merchant of Neway, Mich., writes: "Three bottles of Foley's Honey and Tar absolutely cured my boy of a severe cough, and a neighbor's boy, who was so ill with a cold that the doctors gave him up, was cured by taking Foley's Honey and Tar." Nothing else is as safe and certain in results. F. J. Hill Drug Co., ("The never substitutes.") Salt Lake City.

SCIENTIFIC MISCELLANY.

One of the most remarkable of recent biological discoveries is that certain living organisms may be artificially impressed with a definite new character which at once becomes hereditary, and may be transmitted to numerous generations. The discovery was made about three years ago in Frankfurt, where Massini found that a bacterial intestinal parasite cultivated in the presence of milk sugar acquired the new property of producing lactase, the enzyme that decomposes milk sugar. Shortly after-

ward a second bacterium having the same peculiarity was noted by Burk, and since then three others have been made known by Dr. Reimer Mueller. It appears that when the culture of bacteria exhausts its usual food, some of the group suddenly try the new substance. These develop so rapidly as to rise up above the others in the culture forming the "knobs" by which the altered bacteria are recognized, and the acquired taste is retained and handed down to other generations. Dr. Mueller has made a systematic study of hundreds of kinds of bacteria in the presence of 18 sugars and other carbohydrates. He has

found many bacteria that develop the characteristic knobs with arabinose, dulcitol, saccharose or other material, but very few were affected by more than one substance. Typhoid bacilli were altered in four days on sugar containing one per cent of isodulcitol. The phenomena have practical value, such as giving the chemist reagents for detecting carbohydrates, and the physician tests for recognizing various diseases.

In the novel electromagnetic drill of Burchhardt, a German engineer, electromagnetic on both sides of the drill spindle hold the machine firmly

against the work, and an electromagnetic tool for drilling, vibrating or other operation. The machine is designed for ship yards and machine-shops generally.

Aluminum coins have been found by abrasion experiments at the French mint to wear less rapidly than coins of gold, silver or even bronze.

The recent conclusion that all boiler corrosion is a result of galvanic action is being questioned, and another cause has been brought to the notice of the Society of Chemical Engineers by G. N. Huntley. In this case sulphur ap-

pears to have produced the pitting of a boiler. Increase in the caustic soda used had no effect and the water was slightly alkaline, but blisters formed—especially near the water line—proved to contain ferrous sulphate with a slight excess of sulphuric acid. The investigation has suggested an explanation of the curious acid corrosion in alkaline water. The sulphur contained in the water seems to be first oxidized to sulphuric acid, and this attacks the metal about it, depositing oxides that form a membrane permeable to oxygen but not to alkali. Thus the acid continues its work of corrosion, while protected against neutralization by a shield of its own construction.

The sand-blast as a polisher is now followed by the simple air blast. The erosive power, of course, is not so great, but when the articles to be cleaned or finished are placed in a basket in a rapidly driven centrifugal machine, and hot air is blown from a pipe through the basket, a high polish is imparted rapidly and efficiently. Tarnished nickel or silver and objects not requiring deep cutting are given a brilliant new surface. Special care in packing the articles is taken, so that the air jet may be pro-

Continuation of the Gigantic Money Raising Sale at R. K. Thomas Dry Goods Co.

Under the Management of KANN BROTHERS of San Francisco.

Our counters, our shelves, our floors and cases are still loaded down with merchandise and we are determined to turn a still greater portion of it into money, and have decided to continue the sale

10 Days Longer

which will give every one who was not able to get waited on during the past 10 days an opportunity to get his share of the bargains. After so great a volume of business was done during the past 10 days, we find a good many goods broken in sizes, lots muddled and soiled, which we have re-marked now to sell quickly. These snaps you should come early for Monday Morning at 9 o'clock sharp. We thank the public for their patronage, which we attributed to the confidence of the people here in this old established house and hope to maintain it with a larger portion of your further trade and that we may see this big store again packed to the doors the next 10 days.

R. K. Thomas Dry Goods Co.

Under Management
of KANN BROS.