

# Bright Prospects for Park City is Future's Promise

THE year in Park City, the "ban-ner" camp of Utah, has seen wonderful progress made in the development and prospecting of the great resources of this district, and though 1908 would show a decided decrease in output and dividends, a comparative compilation of years past made, the twelvemonth now ending may well be considered a very successful one.

The one great achievement of the year, one which stands most prominent in the work and life of the camp, was the opening of the great Ontario drain tunnel. This became an accomplished fact on May first, three years and two months from the time of the caving-in of the great waterway, the accident at the time

value. Until July of the present year the shipments were comparatively light, but since that time they have gradually increased and the mine's output at present averages about 2,500 tons weekly. The Silver King is the only one of the Park City properties which has paid a dividend during the year, it having disbursed \$187,500 among its stockholders in October last. And will remember shareholders with at least a like sum before the year ends. A recent report of the company shows a balance in the treasury of \$400,000, with no debts. It would be difficult to determine where the most valuable discoveries have been made in the mine during the year, ore bodies having been uncovered not only in the workings of the old King proper, but in many places in the new territory coming into the possession of the company when the coalition was effected some 18 months ago. In the region of the

depth there will be beyond a doubt great bodies of ore uncovered, as expert opinion has decided that the country are at greater depth than has yet been attained. While the shaft is going down the company has a force of between 300 and 400 men mining and developing in other parts of the mine and treating the product in the mills which are an integral part of the great plant. The Daly West company proper owns an immense acreage of valuable mineral-bearing territory and though the drain tunnel blockade retarded for three years, the extensive prospecting of the same, this year is now well under way in various parts of the company's holdings as well as in the main shaft and new "strikes" are reported at frequent intervals. The property is one of the best equipped in the state, having the latest and best

affected as much by the general slump which the camp experienced last year as were the other properties, their work being more generally continued to prospecting with not much effort being expended in mining the ores for shipping to the market. The judge people intend to block enough ore out to insure steady mining for years to come, before making any decided increase in their working force or making heavy shipments. During the year several important changes and improvements have been made in and about the company's works, chief among them being the installation of the electric haulage system in the tunnel. This device has proven not only a time and money saver, but is safer and more efficient in every respect than was the old method of "mule-train" hauling. The installation of the power traction was quite expensive, the water having to be flumed, and the management is now extremely well satisfied with the equipment and the wonder is how they got along for so long without it. New residence buildings and a new residence, located at the mouth of the tunnel, has also been erected, and is now occupied by the superintendent. Though only running a day shift during the year, the mill has made an excellent record and has kept its reputation for value-saving and satisfactory results. The future of the Daly Judge is bright and in Park City it is considered to be a mine with dividend-paying resources. Some one hundred and fifty men are employed in Park City by this company. One feature worthy of note about the Daly Judge is the success of the Park City zinc mine, which insured the company a large return from its zinc product, which in the past has been a detriment rather than an advantage.

## NEW YORK AND WABASH.

Located on the hill south of the Ontario are the New York Bonanza and the Wabash properties. These are in no way connected though their shafts are located on the same hill, and other than that one is often spoken of in connection with the other.

The New York Bonanza has shipped at intervals during the year, there having been ore in sight at all times, though not sufficient extent to make regular shipments possible. Within the last month has been inaugurated the most important step in the development of the mine in its entire history—that of sinking in the main shaft. It has been the contention of many expert mining men that to make a mine of the New York it would be necessary to sink probably 800 or 1,000 feet, and though there has always been such a splendid showing wherever the work in the mine has been rather loath to leave it, it was finally decided that sinking would be started. The money for this work will be supplied by the New York Bonanza, the mine having stayed with it so long already that no doubt they will be willing enough to furnish further funds in order to see what lies at the bottom of the mine. The property is progressing nicely and will be continued for a year or more.

The Wabash made the first shipment in its history this year, some 50,000 pounds. Though several fortunes have been spent in the development of the mine, it has not yet made a shipment was extracted until within the last few months. Just as this discovery was made, too, water flowed in to the workings in such volume as to make it impossible to continue the work. A pumping plant was installed to unwater the mine and to handle the flow hereafter. It has been characteristic of the discoveries of big bodies of ore in this part of the country that they have been accompanied by much water, and the indication is consequently looked upon with favor by the management of the Wabash.

The perseverance and industry of the promoters of the Wabash for years past has been a marvel, and the making of a big mine of the Wabash would bring joy to the hearts of every one who follows the mining game as a career. In this part of the country the past thirty days the installation of the new pumps, the unwavering of the mine and the resumption of mining has been accomplished, and a nice body of ore is opening up, bigger and richer as progress is made.

## AMERICAN FLAG PROPERTY.

Situated across the road from the Daly Judge mill in Empire canyon is the American Flag property, one of the smaller of Park City's mines and yet a most promising one. During the year the Flag has developed into a regular shipping property, and though the management is adverse to publicity and has no information for the press, it is known that the tonnage being sent out is getting greater as work progresses. On the 900-level developments have opened up large bodies of high-grade ore, and on the lower levels also the indications are that the greatest deposits of the property are yet to be found. A bond issue of \$150,000 has been authorized by the stockholders of the company for the erection of a mill, but the erection of this plant has not yet been started.

## UTAH TREASURE HILL.

It was a source of much gratification to Park City to have Mr. Jesse Knight demonstrate his faith in the camp by becoming interested in the Utah Treasure Hill company, which has taken over the old Creaser property, where work has been prosecuted for several months. The new compressor plant recently installed at the mine is doing fine work and excellent progress is being made in the development of the prospect. The Treasure Hill company owns some very valuable ground in the Park City district, and with men of Mr. Knight's ability and experience interested in it, the future is expected to be heard from in good shape in due time.

## THE ADIRONDACK.

The old Glencoe or Curtis property together with the Bowlder Basin group,

on Bonanza Flat, have been incorporated during the year into a company known as the Adirondack Mining company, backed by local and eastern capital, with an evident determination to prospect and mine on a large scale. At the Curtis claim of the company there are now 3,000 tons of ore on the dump, extracted in the course of the work of prospecting waiting to be run through the mill, which will be completed and ready for a trial run, at least, before the new year is far advanced. This mill has been in course of construction for about two months past and is modern and complete in every detail, having a capacity of 150 tons per day, and being equipped with an electric power generating plant which will be used to furnish light and power for the mine and mill. Developments of the last month on the 200-level at the mine has outlasted by far any former showings in the property. At the bowlder basin a force of men has been employed all summer in the

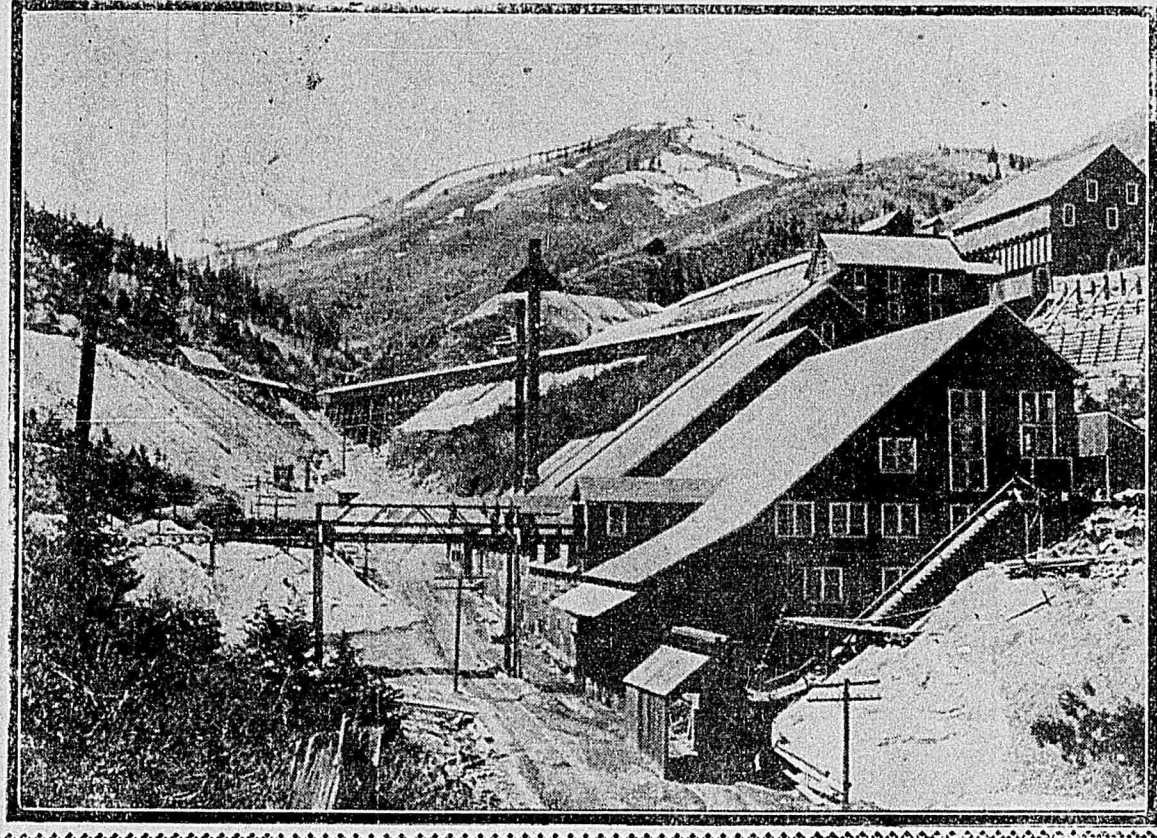
erection of hoisting works, boarding house, etc., and mining will begin there in earnest at the beginning of 1909.

## OTHER HEARTY YOUNGSTERS.

In the past year in Park City more interest has been manifested in prospecting in new sections of the camp than for years past, and now in every direction there is working going on. Operations are on a small scale to be sure in many instances, but nevertheless it is enough to demonstrate that the indomitable spirit which carried the pioneer prospectors to victory and wealth still exists, and so long as such is the case, just so long will the camp be getting bigger and richer; untold wealth is stored in our mountain treasure vaults, and the more who seek it, the more widespread will be its goodly effects when found.

Over the Scott Hill divide to the west of the city the Scottish Chief, the Copper Apex and the Iowa Copper are hearty and promising young-

sters; to the east of camp the South Dakota, the Nelson Queen, the Clark Virginia and others have opened up well in their preparatory exploration and work is still being prosecuted on them with promises of larger working forces being employed in the near future; to the north, the Utah First National company has prosecuted work all year on its property and though the monthly pay roll is being met by assessments paid by the willing stockholders, these stockholders have such faith in the ultimate outcome of the mine that they are willing to stand by it for a long time to come, and in the mountains south of camp besides the big producers, the West, Judge, King, etc., there are a number of smaller companies operating with more or less success and promise. Park City is still in its infancy; what the new year will bring remains to be seen, but all indications are favorable for record-breaking productions and the making of many new mines.



SILVER KING MINE AND MILL, PARK CITY.

being considered of little importance, the management being of the opinion that a few days' work would repair all damage done. For the full three years, however, it proved a loadstone to the camp, the future development and success of numerous properties depended upon its successful opening, and when the prolonged and hazardous undertaking had been finally accomplished at the expense of life and a half-million dollars by the Ontario-Daly West company, there was general rejoicing among the mine owners, operators and citizens generally in Park City. The camp has not yet fully recovered from the effects of the drain tunnel blockade, but since its opening a more cheerful and prosperous spirit has pervaded the camp, and under the present circumstances the coming year holds forth great promise of bringing with it an eagerly awaited and deserved "boom."

The outlook in January a year ago was anything but hopeful. The financial "fury" in the east, local labor difficulties, the drain tunnel trouble and the prevailing low prices for silver and lead, all combined in producing a distressing effect on the camp. The Ontario, except for the work in the tunnel and the Daly West were practically idle; the Silver King, Daly Judge, American Flag and Wabash were working with about half their usual forces and many others were closed down entirely. This state of affairs continued until well along in the month of June when the big companies were given the word to "cut loose" in full blast, and since that time Park City has been steadily on the improve. At present all of the big mines and the smaller ones, too, are working under normal conditions, with full pay-rolls, the mining getting out of the debt they drifted into during their enforced idleness, and the prospects are bright. The Silver King, Daly West and Daly Judge are opening up new and extensive areas of rich ore as their development work, which is carried on in connection with the regular mining operations, progresses; and among the smaller properties, the American Flag, Wabash, Keystone, New York, Utah-Treasure Hill, North Dakota, Curtis and many others, work is going on with very encouraging results. New blood is being infused into the camp; "uncles" Jesse Knight has expressed his faith in its future greatness, other local operators are heeding the good reports being sent out from our properties and eastern capital, also, has been more heavily invested in Park City mines this year than ever before. It is taking many fortunes to prospect and develop the mines of this district, they are assured, once the necessary exploitation is accomplished. And so, the year past, in that it has seen accomplished such extensive results toward the desired ends, has been a most successful one, and the work done and the capital invested, has prepared the way for a record-breaking output and dividend returns in 1909.

## THE SILVER KING COALITION.

The shipments from the Silver King Coalition Mines company property for the year will aggregate approximately 24,000 tons, of about \$50 per ton

Odin, one of the prospects absorbed at that time, vast ore deposits have been discovered, and this has also been the case in the Kearns-Keith ground. Some months ago a churn-drill was put in operation at the mine for the purpose of improving the circulation of the old King proper, but in many places in the new territory coming into the possession of the company when the coalition was effected some 18 months ago. In the region of the depth there will be beyond a doubt great bodies of ore uncovered, as expert opinion has decided that the country are at greater depth than has yet been attained. While the shaft is going down the company has a force of between 300 and 400 men mining and developing in other parts of the mine and treating the product in the mills which are an integral part of the great plant. The Daly West company proper owns an immense acreage of valuable mineral-bearing territory and though the drain tunnel blockade retarded for three years, the extensive prospecting of the same, this year is now well under way in various parts of the company's holdings as well as in the main shaft and new "strikes" are reported at frequent intervals. The property is one of the best equipped in the state, having the latest and best

## DALY WEST-ONTARIO.

Though the work of each is separate and carried on by different local managements, the Daly West and Ontario properties, under the management of the Bambergers, have several interests in common, the principal ones of these being the Ontario drain tunnel. Since the opening of the big tunnel last summer vigorous work has been done in extending it to make connection with the Daly West, and this work is rapidly nearing completion. With this connection made the question of water in the Daly West shaft, always a source of more or less inconvenience and expense, will have been successfully dealt with, and no more delay in the development of the mine will be experienced on account of water. Shipping from the Daly West property was not commenced until the middle of June, and since that time the output has totaled up about 14,000 tons, an average of 2,300 tons being sent out each week. Prior to the resumption of work at the mine in June after a six months' close, several important changes and improvements were made at the company's works, a new saw mill and large coal bins being erected at the mouth of the shipping tunnel. Now all the mine owners for both the Daly West and Ontario are framed right at the saw mill and taken into the mine through the tunnel! The new work at the Daly West for the last 60 days has been confined largely to prospecting the shaft for sinking and getting these operations under way. Though water has hindered this work a little of late, good progress in the shaft is now being made and with

equipment in mine and mills. Sinking with other routine development, will be the order of work for the ensuing year and ere long the Daly West will in all probability be again in the dividend-paying class. Located at the Ontario, Park City's oldest and in point of aggregate earnings so far, its greatest mine, there has been but comparatively little work done during the year. The management until recently has had its hands full with the opening of the tunnel, and has been under enormous expense as a result. On the upper levels, however, water making it impossible to work below, even had it been so desired, some development work has been done, enough to demonstrate at least, that the old standbys has by no means "played out." It is the intention of course to get at the ore bodies of the mine at depth in the near future but just when this work will begin is not definitely known. The company mill has been idle all year but will be put in commission again when the developments warrant such action.

At the Daly and Nalldriver properties, also in the control of the Bambergers, no attempt at systematic work has been made during the year. Both of these properties, however, are of recognized merit, the Daly having in the past paid dividends, and may be depended upon to "make good" when the management sees fit to operate them. The remaining Bamberger property in camp, the Keystone, located at the head of Thayne's canyon and lying in close proximity to ground owned by the Silver King Coalition and the Silver King Consolidated companies, has been the scene of renewed activity this year and the development so far accomplished has been added to constantly. The future plans for the working of this great property are much as they have been in the past—continued development of new territory and systematic mining of the ores already blocked out. The various plants connected with the mine—the mills, sampler, aerial tramway, etc., are kept in perfect working order at all times, which is being added to constantly. This future plans for the working of this great property are much as they have been in the past—continued development of new territory and systematic mining of the ores already blocked out. The various plants connected with the mine—the mills, sampler, aerial tramway, etc., are kept in perfect working order at all times, which is being added to constantly. This future plans for the working of this great property are much as they have been in the past—continued development of new territory and systematic mining of the ores already blocked out. The various plants connected with the mine—the mills, sampler, aerial tramway, etc., are kept in perfect working order at all times, which is being added to constantly. This future plans for the working of this great property are much as they have been in the past—continued development of new territory and systematic mining of the ores already blocked out. The various plants connected with the mine—the mills, sampler, aerial tramway, etc., are kept in perfect working order at all times, which is being added to constantly. This future plans for the working of this great property are much as they have been in the past—continued development of new territory and systematic mining of the ores already blocked out. The various plants connected with the mine—the mills, sampler, aerial tramway, etc., are kept in perfect working order at all times, which is being added to constantly. This future plans for the working of this great property are much as they have been in the past—continued development of new territory and systematic mining of the ores already blocked out. The various plants connected with the mine—the mills, sampler, aerial tramway, etc., are kept in perfect working order at all times, which is being added to constantly. This future plans for the working of this great property are much as they have been in the past—continued development of new territory and systematic mining of the ores already blocked out. The various plants connected with the mine—the mills, sampler, aerial tramway, etc., are kept in perfect working order at all times, which is being added to constantly. This future plans for the working of this great property are much as they have been in the past—continued development of new territory and systematic mining of the ores already blocked out. The various plants connected with the mine—the mills, sampler, aerial tramway, etc., are kept in perfect working order at all times, which is being added to constantly. This future plans for the working of this great property are much as they have been in the past—continued development of new territory and systematic mining of the ores already blocked out. The various plants connected with the mine—the mills, sampler, aerial tramway, etc., are kept in perfect working order at all times, which is being added to constantly. This future plans for the working of this great property are much as they have been in the past—continued development of new territory and systematic mining of the ores already blocked out. The various plants connected with the mine—the mills, sampler, aerial tramway, etc., are kept in perfect working order at all times, which is being added to constantly. This future plans for the working of this great property are much as they have been in the past—continued development of new territory and systematic mining of the ores already blocked out. The various plants connected with the mine—the mills, sampler, aerial tramway, etc., are kept in perfect working order at all times, which is being added to constantly. This future plans for the working of this great property are much as they have been in the past—continued development of new territory and systematic mining of the ores already blocked out. The various plants connected with the mine—the mills, sampler, aerial tramway, etc., are kept in perfect working order at all times, which is being added to constantly. This future plans for the working of this great property are much as they have been in the past—continued development of new territory and systematic mining of the ores already blocked out. The various plants connected with the mine—the mills, sampler, aerial tramway, etc., are kept in perfect working order at all times, which is being added to constantly. This future plans for the working of this great property are much as they have been in the past—continued development of new territory and systematic mining of the ores already blocked out. The various plants connected with the mine—the mills, sampler, aerial tramway, etc., are kept in perfect working order at all times, which is being added to constantly. This future plans for the working of this great property are much as they have been in the past—continued development of new territory and systematic mining of the ores already blocked out. The various plants connected with the mine—the mills, sampler, aerial tramway, etc., are kept in perfect working order at all times, which is being added to constantly. This future plans for the working of this great property are much as they have been in the past—continued development of new territory and systematic mining of the ores already blocked out. The various plants connected with the mine—the mills, sampler, aerial tramway, etc., are kept in perfect working order at all times, which is being added to constantly. This future plans for the working of this great property are much as they have been in the past—continued development of new territory and systematic mining of the ores already blocked out. The various plants connected with the mine—the mills, sampler, aerial tramway, etc., are kept in perfect working order at all times, which is being added to constantly. This future plans for the working of this great property are much as they have been in the past—continued development of new territory and systematic mining of the ores already blocked out. The various plants connected with the mine—the mills, sampler, aerial tramway, etc., are kept in perfect working order at all times, which is being added to constantly. This future plans for the working of this great property are much as they have been in the past—continued development of new territory and systematic mining of the ores already blocked out. The various plants connected with the mine—the mills, sampler, aerial tramway, etc., are kept in perfect working order at all times, which is being added to constantly. This future plans for the working of this great property are much as they have been in the past—continued development of new territory and systematic mining of the ores already blocked out. The various plants connected with the mine—the mills, sampler, aerial tramway, etc., are kept in perfect working order at all times, which is being added to constantly. This future plans for the working of this great property are much as they have been in the past—continued development of new territory and systematic mining of the ores already blocked out. The various plants connected with the mine—the mills, sampler, aerial tramway, etc., are kept in perfect working order at all times, which is being added to constantly. This future plans for the working of this great property are much as they have been in the past—continued development of new territory and systematic mining of the ores already blocked out. The various plants connected with the mine—the mills, sampler, aerial tramway, etc., are kept in perfect working order at all times, which is being added to constantly. This future plans for the working of this great property are much as they have been in the past—continued development of new territory and systematic mining of the ores already blocked out. The various plants connected with the mine—the mills, sampler, aerial tramway, etc., are kept in perfect working order at all times, which is being added to constantly. This future plans for the working of this great property are much as they have been in the past—continued development of new territory and systematic mining of the ores already blocked out. The various plants connected with the mine—the mills, sampler, aerial tramway, etc., are kept in perfect working order at all times, which is being added to constantly. This future plans for the working of this great property are much as they have been in the past—continued development of new territory and systematic mining of the ores already blocked out. The various plants connected with the mine—the mills, sampler, aerial tramway, etc., are kept in perfect working order at all times, which is being added to constantly. This future plans for the working of this great property are much as they have been in the past—continued development of new territory and systematic mining of the ores already blocked out. The various plants connected with the mine—the mills, sampler, aerial tramway, etc., are kept in perfect working order at all times, which is being added to constantly. This future plans for the working of this great property are much as they have been in the past—continued development of new territory and systematic mining of the ores already blocked out. The various plants connected with the mine—the mills, sampler, aerial tramway, etc., are kept in perfect working order at all times, which is being added to constantly. This future plans for the working of this great property are much as they have been in the past—continued development of new territory and systematic mining of the ores already blocked out. The various plants connected with the mine—the mills, sampler, aerial tramway, etc., are kept in perfect working order at all times, which is being added to constantly. This future plans for the working of this great property are much as they have been in the past—continued development of new territory and systematic mining of the ores already blocked out. The various plants connected with the mine—the mills, sampler, aerial tramway, etc., are kept in perfect working order at all times, which is being added to constantly. This future plans for the working of this great property are much as they have been in the past—continued development of new territory and systematic mining of the ores already blocked out. The various plants connected with the mine—the mills, sampler, aerial tramway, etc., are kept in perfect working order at all times, which is being added to constantly. This future plans for the working of this great property are much as they have been in the past—continued development of new territory and systematic mining of the ores already blocked out. The various plants connected with the mine—the mills, sampler, aerial tramway, etc., are kept in perfect working order at all times, which is being added to constantly. This future plans for the working of this great property are much as they have been in the past—continued development of new territory and systematic mining of the ores already blocked out. The various plants connected with the mine—the mills, sampler, aerial tramway, etc., are kept in perfect working order at all times, which is being added to constantly. This future plans for the working of this great property are much as they have been in the past—continued development of new territory and systematic mining of the ores already blocked out. The various plants connected with the mine—the mills, sampler, aerial tramway, etc., are kept in perfect working order at all times, which is being added to constantly. This future plans for the working of this great property are much as they have been in the past—continued development of new territory and systematic mining of the ores already blocked out. The various plants connected with the mine—the mills, sampler, aerial tramway, etc., are kept in perfect working order at all times, which is being added to constantly. This future plans for the working of this great property are much as they have been in the past—continued development of new territory and systematic mining of the ores already blocked out. The various plants connected with the mine—the mills, sampler, aerial tramway, etc., are kept in perfect working order at all times, which is being added to constantly. This future plans for the working of this great property are much as they have been in the past—continued development of new territory and systematic mining of the ores already blocked out. The various plants connected with the mine—the mills, sampler, aerial tramway, etc., are kept in perfect working order at all times, which is being added to constantly. This future plans for the working of this great property are much as they have been in the past—continued development of new territory and systematic mining of the ores already blocked out. The various plants connected with the mine—the mills, sampler, aerial tramway, etc., are kept in perfect working order at all times, which is being added to constantly. This future plans for the working of this great property are much as they have been in the past—continued development of new territory and systematic mining of the ores already blocked out. The various plants connected with the mine—the mills, sampler, aerial tramway, etc., are kept in perfect working order at all times, which is being added to constantly. This future plans for the working of this great property are much as they have been in the past—continued development of new territory and systematic mining of the ores already blocked out. The various plants connected with the mine—the mills, sampler, aerial tramway, etc., are kept in perfect working order at all times, which is being added to constantly. This future plans for the working of this great property are much as they have been in the past—continued development of new territory and systematic mining of the ores already blocked out. The various plants connected with the mine—the mills, sampler, aerial tramway, etc., are kept in perfect working order at all times, which is being added to constantly. This future plans for the working of this great property are much as they have been in the past—continued development of new territory and systematic mining of the ores already blocked out. The various plants connected with the mine—the mills, sampler, aerial tramway, etc., are kept in perfect working order at all times, which is being added to constantly. This future plans for the working of this great property are much as they have been in the past—continued development of new territory and systematic mining of the ores already blocked out. The various plants connected with the mine—the mills, sampler, aerial tramway, etc., are kept in perfect working order at all times, which is being added to constantly. This future plans for the working of this great property are much as they have been in the past—continued development of new territory and systematic mining of the ores already blocked out. The various plants connected with the mine—the mills, sampler, aerial tramway, etc., are kept in perfect working order at all times, which is being added to constantly. This future plans for the working of this great property are much as they have been in the past—continued development of new territory and systematic mining of the ores already blocked out. The various plants connected with the mine—the mills, sampler, aerial tramway, etc., are kept in perfect working order at all times, which is being added to constantly. This future plans for the working of this great property are much as they have been in the past—continued development of new territory and systematic mining of the ores already blocked out. The various plants connected with the mine—the mills, sampler, aerial tramway, etc., are kept in perfect working order at all times, which is being added to constantly. This future plans for the working of this great property are much as they have been in the past—continued development of new territory and systematic mining of the ores already blocked out. The various plants connected with the mine—the mills, sampler, aerial tramway, etc., are kept in perfect working order at all times, which is being added to constantly. This future plans for the working of this great property are much as they have been in the past—continued development of new territory and systematic mining of the ores already blocked out. The various plants connected with the mine—the mills, sampler, aerial tramway, etc., are kept in perfect working order at all times, which is being added to constantly. This future plans for the working of this great property are much as they have been in the past—continued development of new territory and systematic mining of the ores already blocked out. The various plants connected with the mine—the mills, sampler, aerial tramway, etc., are kept in perfect working order at all times, which is being added to constantly. This future plans for the working of this great property are much as they have been in the past—continued development of new territory and systematic mining of the ores already blocked out. The various plants connected with the mine—the mills, sampler, aerial tramway, etc., are kept in perfect working order at all times, which is being added to constantly. This future plans for the working of this great property are much as they have been in the past—continued development of new territory and systematic mining of the ores already blocked out. The various plants connected with the mine—the mills, sampler, aerial tramway, etc., are kept in perfect working order at all times, which is being added to constantly. This future plans for the working of this great property are much as they have been in the past—continued development of new territory and systematic mining of the ores already blocked out. The various plants connected with the mine—the mills, sampler, aerial tramway, etc., are kept in perfect working order at all times, which is being added to constantly. This future plans for the working of this great property are much as they have been in the past—continued development of new territory and systematic mining of the ores already blocked out. The various plants connected with the mine—the mills, sampler, aerial tramway, etc., are kept in perfect working order at all times, which is being added to constantly. This future plans for the working of this great property are much as they have been in the past—continued development of new territory and systematic mining of the ores already blocked out. The various plants connected with the mine—the mills, sampler, aerial tramway, etc., are kept in perfect working order at all times, which is being added to constantly. This future plans for the working of this great property are much as they have been in the past—continued development of new territory and systematic mining of the ores already blocked out. The various plants connected with the mine—the mills, sampler, aerial tramway, etc., are kept in perfect working order at all times, which is being added to constantly. This future plans for the working of this great property are much as they have been in the past—continued development of new territory and systematic mining of the ores already blocked out. The various plants connected with the mine—the mills, sampler, aerial tramway, etc., are kept in perfect working order at all times, which is being added to constantly. This future plans for the working of this great property are much as they have been in the past—continued development of new territory and systematic mining of the ores already blocked out. The various plants connected with the mine—the mills, sampler, aerial tramway, etc., are kept in perfect working order at all times, which is being added to constantly. This future plans for the working of this great property are much as they have been in the past—continued development of new territory and systematic mining of the ores already blocked out. The various plants connected with the mine—the mills, sampler, aerial tramway, etc., are kept in perfect working order at all times, which is being added to constantly. This future plans for the working of this great property are much as they have been in the past—continued development of new territory and systematic mining of the ores already blocked out. The various plants connected with the mine—the mills, sampler, aerial tramway, etc., are kept in perfect working order at all times, which is being added to constantly. This future plans for the working of this great property are much as they have been in the past—continued development of new territory and systematic mining of the ores already blocked out. The various plants connected with the mine—the mills, sampler, aerial tramway, etc., are kept in perfect working order at all times, which is being added to constantly. This future plans for the working of this great property are much as they have been in the past—continued development of new territory and systematic mining of the ores already blocked out. The various plants connected with the mine—the mills, sampler, aerial tramway, etc., are kept in perfect working order at all times, which is being added to constantly. This future plans for the working of this great property are much as they have been in the past—continued development of new territory and systematic mining of the ores already blocked out. The various plants connected with the mine—the mills, sampler, aerial tramway, etc., are kept in perfect working order at all times, which is being added to constantly. This future plans for the working of this great property are much as they have been in the past—continued development of new territory and systematic mining of the ores already blocked out. The various plants connected with the mine—the mills, sampler, aerial tramway, etc., are kept in perfect working order at all times, which is being added to constantly. This future plans for the working of this great property are much as they have been in the past—continued development of new territory and systematic mining of the ores already blocked out. The various plants connected with the mine—the mills, sampler, aerial tramway, etc., are kept in perfect working order at all times, which is being added to constantly. This future plans for the working of this great property are much as they have been in the past—continued development of new territory and systematic mining of the ores already blocked out. The various plants connected with the mine—the mills, sampler, aerial tramway, etc., are kept in perfect working order at all times, which is being added to constantly. This future plans for the working of this great property are much as they have been in the past—continued development of new territory and systematic mining of the ores already blocked out. The various plants connected with the mine—the mills, sampler, aerial tramway, etc., are kept in perfect working order at all times, which is being added to constantly. This future plans for the working of this great property are much as they have been in the past—continued development of new territory and systematic mining of the ores already blocked out. The various plants connected with the mine—the mills, sampler, aerial tramway, etc., are kept in perfect working order at all times, which is being added to constantly. This future plans for the working of this great property are much as they have been in the past—continued development of new territory and systematic mining of the ores already blocked out. The various plants connected with the mine—the mills, sampler, aerial tramway, etc., are kept in perfect working order at all times, which is being added to constantly. This future plans for the working of this great property are much as they have been in the past—continued development of new territory and systematic mining of the ores already blocked out. The various plants connected with the mine—the mills, sampler, aerial tramway, etc., are kept in perfect working order at all times, which is being added to constantly. This future plans for the working of this great property are much as they have been in the past—continued development of new territory and systematic mining of the ores already blocked out. The various plants connected with the mine—the mills, sampler, aerial tramway, etc., are kept in perfect working order at all times, which is being added to constantly. This future plans for the working of this great property are much as they have been in the past—continued development of new territory and systematic mining of the ores already blocked out. The various plants connected with the mine—the mills, sampler, aerial tramway, etc., are kept in perfect working order at all times, which is being added to constantly. This future plans for the working of this great property are much as they have been in the past—continued development of new territory and systematic mining of the ores already blocked out. The various plants connected with the mine—the mills, sampler, aerial tramway, etc., are kept in perfect working order at all times, which is being added to constantly. This future plans for the working of this great property are much as they have been in the past—continued development of new territory and systematic mining of the ores already blocked out. The various plants connected with the mine—the mills, sampler, aerial tramway, etc., are kept in perfect working order at all times, which is being added to constantly. This future plans for the working of this great property are much as they have been in the past—continued development of new territory and systematic mining of the ores already blocked out. The various plants connected with the mine—the mills, sampler, aerial tramway, etc., are kept in perfect working order at all times, which is being added to constantly. This future plans for the working of this great property are much as they have been in the past—continued development of new territory and systematic mining of the ores already blocked out. The various plants connected with the mine—the mills, sampler, aerial tramway, etc., are kept in perfect working order at all times, which is being added to constantly. This future plans for the working of this great property are much as they have been in the past—continued development of new territory and systematic mining of the ores already blocked out. The various plants connected with the mine—the mills, sampler, aerial tramway, etc., are kept in perfect working order at all times, which is being added to constantly. This future plans for the working of this great property are much as they have been in the past—continued development of new territory and systematic mining of the ores already blocked out. The various plants connected with the mine—the mills, sampler, aerial tramway, etc., are kept in perfect working order at all times, which is being added to constantly. This future plans for the working of this great property are much as they have been in the past—continued development of new territory and systematic mining of the ores already blocked out. The various plants connected with the mine—the mills, sampler, aerial tramway, etc., are kept in perfect working order at all times, which is being added to constantly. This future plans for the working of this great property are much as they have been in the past—continued development of new territory and systematic mining of the ores already blocked out. The various plants connected with the mine—the mills, sampler, aerial tramway, etc., are kept in perfect working order at all times, which is being added to constantly. This future plans for the working of this great property are much as they have been in the past—continued development of new territory and systematic mining of the ores already blocked out. The various plants connected with the mine—the mills, sampler, aerial tramway, etc., are kept in perfect working order at all times, which is being added to constantly. This future plans for the working of this great property are much as they have been in the past—continued development of new territory and systematic mining of the ores already blocked out. The various plants connected with the mine—the mills, sampler, aerial tramway, etc., are kept in perfect working order at all times, which is being added to constantly. This future plans for the working of this great property are much as they have been in the past—continued development of new territory and systematic mining of the ores already blocked out. The various plants connected with the mine—the mills, sampler, aerial tramway, etc., are kept in perfect working order at all times, which is being added to constantly. This future plans for the working of this great property are much as they have been in the past—continued development of new territory and systematic mining of the ores already blocked out. The various plants connected with the mine—the mills, sampler, aerial tramway, etc., are kept in perfect working order at all times, which is being added to constantly. This future plans for the working of this great property are much as they have been in the past—continued development of new territory and systematic mining of the ores already blocked out. The various plants connected with the mine—the mills, sampler, aerial tramway, etc., are kept in perfect working order at all times, which is being added to constantly. This future plans for the working of this great property are much as they have been in the past—continued development of new territory and systematic mining of the ores already blocked out. The various plants connected with the mine—the mills, sampler, aerial tramway, etc., are kept in perfect working order at all times, which is being added to constantly. This future plans for the working of this great property are much as they have been in the past—continued development of new territory and systematic mining of the ores already blocked out. The various plants connected with the mine—the mills, sampler, aerial tramway, etc., are kept in perfect working order at all times, which is being added to constantly. This future plans for the working of this great property are much as they have been in the past—continued development of new territory and systematic mining of the ores already blocked out. The various plants connected with the mine—the mills, sampler, aerial tramway, etc., are kept in perfect working order at all times, which is being added to constantly. This future plans for the working of this great property are much as they have been in the past—continued development of new territory and systematic mining of the ores already blocked out. The various plants connected with the mine—the mills, sampler, aerial tramway, etc., are kept in perfect working order at all times, which is being added to constantly. This future plans for the working of this great property are much as they have been in the past—continued development of new territory and systematic mining of the ores already blocked out. The various plants connected with the mine—the mills, sampler, aerial tramway, etc., are kept in perfect working order at all times, which is being added to constantly. This future plans for the working of this great property are much as they have been in the past—continued development of new territory and systematic mining of the ores already blocked out. The various plants connected with the mine—the mills, sampler, aerial tramway, etc., are kept in perfect working order at all times, which is being added to constantly. This future plans for the working of this great property are much as they have been in the past—continued development of new territory and systematic mining of the ores already blocked out. The various plants connected with the mine—the mills, sampler, aerial tramway, etc., are kept in perfect working order at all times, which is being added to constantly. This future plans for the working of this great property are much as they have been in the past—continued development of new territory and systematic mining of the ores already blocked out. The various plants connected with the mine—the mills, sampler, aerial tramway, etc., are kept in perfect working order at all times, which is being added to constantly. This future plans for the working of this great property are much as they have been in the past—continued development of new territory and systematic mining of the ores already blocked out. The various plants connected with the mine—the mills, sampler, aerial tramway, etc., are kept in perfect working order at all times, which is being added to constantly. This future plans for the working of this great property are much as they have been in the past—continued development of new territory and systematic mining of the ores already blocked out. The various plants connected with the mine—the mills, sampler, aerial tramway, etc., are kept in perfect working order at all times, which is being added to constantly. This future plans for the working of this great property are much as they have been in the past—continued development of new territory and systematic mining of the ores already blocked out. The various plants connected with the mine—the mills, sampler, aerial tramway, etc., are kept in perfect working order at all times, which is being added to constantly. This future plans for the working of this great property are much as they have been in the past—continued development of new territory and systematic mining of the ores already blocked out. The various plants connected with the mine—the mills, sampler, aerial tramway, etc., are kept in perfect working order at all times, which is being added to constantly. This future plans for the working of this great property are much as they have been in the past—continued development of new territory and systematic mining of the ores already blocked out. The various plants connected with the mine—the mills, sampler, aerial tramway, etc., are kept in perfect working order at all times, which is being added to constantly. This future plans for the working of this great property are much as they have been in the past—continued development of new territory and systematic mining of the ores already blocked out. The various plants connected with the mine—the mills, sampler, aerial tramway, etc., are kept in perfect working order at all times, which is being added to constantly. This future plans for the working of this great property are much as they have been in the past—continued development of new territory and systematic mining of the ores already blocked out. The various plants connected with the mine—the mills, sampler, aerial tramway, etc., are kept in perfect working order at all times, which is being added to constantly. This future plans for the working of this great property are much as they have been in the past—continued development of new territory and systematic mining of the ores already blocked out. The various plants connected with the mine—the mills, sampler, aerial tramway, etc., are kept in perfect working order at all times, which is being added to constantly. This future plans for the working of this great property are much as they have been in the past—continued development of new territory and systematic mining of the ores already blocked out. The various plants connected with the mine—the mills, sampler, aerial tramway, etc., are kept in perfect working order at all times, which is being added to constantly. This future plans for the working of this great property are much as they have been in the past—continued development of new territory and systematic mining of the ores already blocked out. The various plants connected with the mine—the mills, sampler, aerial tramway, etc., are kept in perfect working order at all times, which is being added to constantly. This future plans for the working of this great property are much as they have been in the past—continued development of new territory and systematic mining of the ores already blocked out. The various plants connected with the mine—the mills, sampler, aerial tramway, etc., are kept in perfect working order at all times, which is being added to constantly. This future plans for the working of this great property are much as they have been in the past—continued development of new territory and systematic mining of the ores already blocked out. The various plants connected with the mine—the mills, sampler, aerial tramway, etc., are kept in perfect working order at all times, which is being added to constantly. This future plans