

Ogden's Onward March During the Coming Year

THE watchword in Ogden, the second city in population and business enterprises in the State of Utah, for the year 1907 has been "onward!" It has seemed to be in the minds and purposes of the people to advance the city's interests in every respect, and hand in hand the capitalists and the laboring class have toiled for the upbuilding of the entire city and county, the effect of which is noticeable on every side, and is felt and appreciated by all.

WORK FOR ALL

There has been no cause for men, women or children to be idle this year, as there has been work for everybody; not at low wages, for wages were the highest paid here for many years. Those who have done manual labor for the city have received from \$2 to \$2.50 per day for their services; the carpenters have been earning from \$4 to \$5 per day; the masons from \$4.50 to \$6; men with teams from \$4 to \$6; all others in proportion. There has been plenty of work at such wages, in fact, many buildings have been delayed because of the contractors being unable to find mechanics to perform the work within the specified time. So scarce has labor been in Ogden that the Amalgamated Sugar company found it necessary to send to Idaho and employ Japanese to come to Weber county and harvest their beets, and for the first time in the history of the sugar industry in Utah the management of the Ogden factory was unable to find men sufficient to take care of the factory work and were obliged to hire women to do certain kinds of labor in the preparation of the sugar, although high wages were offered.

The canning factories have also been tied up for help all summer.

SOME LOSSES

Annually the farmers and fruit growers have been able to get plenty of help in harvesting their crops, but not so this year. Much fruit was wasted because the fruit growers were unable to get any one to gather it for them, and many farmers lost considerable because of the scarcity of farm hands, though much higher wages than ever before were offered.

BUSINESS PROSPERITY

There have been no business fail-

ures in Ogden during 1906. Instead there have been several places of business opened up in the city, and all are doing well. The merchants of Ogden were never in a more prosperous condition than at the present time. Their shelves are loaded with goods, and the most gratifying thing is, that most of them have stocks paid for, and a neat bank account besides. The traveling men who visit Ogden from the large manufacturing and wholesale houses report that their sales in Ogden are much larger, and the business men, as a rule, take their discounts, which can be taken as an indication that business has been good in most lines, and prospects were never more encouraging for merchants, mechanics, farmers and laborers than just now.

DESTRUCTIVE FIRE

Ogden was visited this year by a very disastrous fire, which wrought a quarter of a million dollars' damages and destroyed a quarter of one of the business blocks of the city, and threatened the entire business district. It was surprising how quickly the owners of the property rebuilt. The section which looked so devastated but a few months ago is now practically all built up with much larger and more substantial buildings, so that while the fire was a financial loss, it destroyed several old frame buildings that have been replaced by brick structures, giving a much better appearance to that section of the city. Other than the fire mentioned, Ogden has experienced little to retard its growth and prosperity.

INCREASED POPULATION

It is estimated that the population of Ogden City has increased fully 2,000 during the past twelve months, giving it a population of over 25,000. This is shown by the increase in the school census and the few vacant dwellings to be found in any part of town.

MANY NEW BUILDINGS

The city has not had a building boom, but a steady growth. Fully 200 houses have been built during the year, the major portion of them being constructed of brick, of modern architecture and containing from four to seven rooms. There have been few large houses built, but mostly cottages for rent. The money expended in the erection of houses in Ogden this year is estimated at \$250,000, and of business blocks and other large buildings fully \$500,000. Thus a million dollars has been expended in the erection of new buildings. Among the largest built is the smelter plant, near the Hot Springs, which cost about \$150,000; the railroad power generating plant and boiler shops, \$65,000; depot commissary and laundry building, \$50,000; Ogden Packing & Provision company's plant, \$25,000; Shupe-Williams Candy company's factory, \$22,000; armory building, \$18,000; George A. Lowe store, \$10,000; Burton Implement company, \$15,000; Lewis school, \$17,000; Weber stake academy annex, \$25,000; Wright & Sons, remodeling, \$15,000. Numerous other smaller buildings have been erected, costing from \$2,000 up to \$15,000. The architects of the city are very

busy preparing plans and specifications for many business blocks and residences to be erected next year. They estimate that 1907 will outdo the past year in the building line.

GATEWAY CITY

Ogden city is the gateway to the west, having as it has four of the great railroads junctioning here—viz: the Union Pacific, Oregon Short Line, Southern Pacific and Rio Grande Western, the first three controlled by the Harriman interests and the other by the Goulds. These four companies employ about 2,500 men in all the departments, and have a monthly payroll upwards of \$300,000.

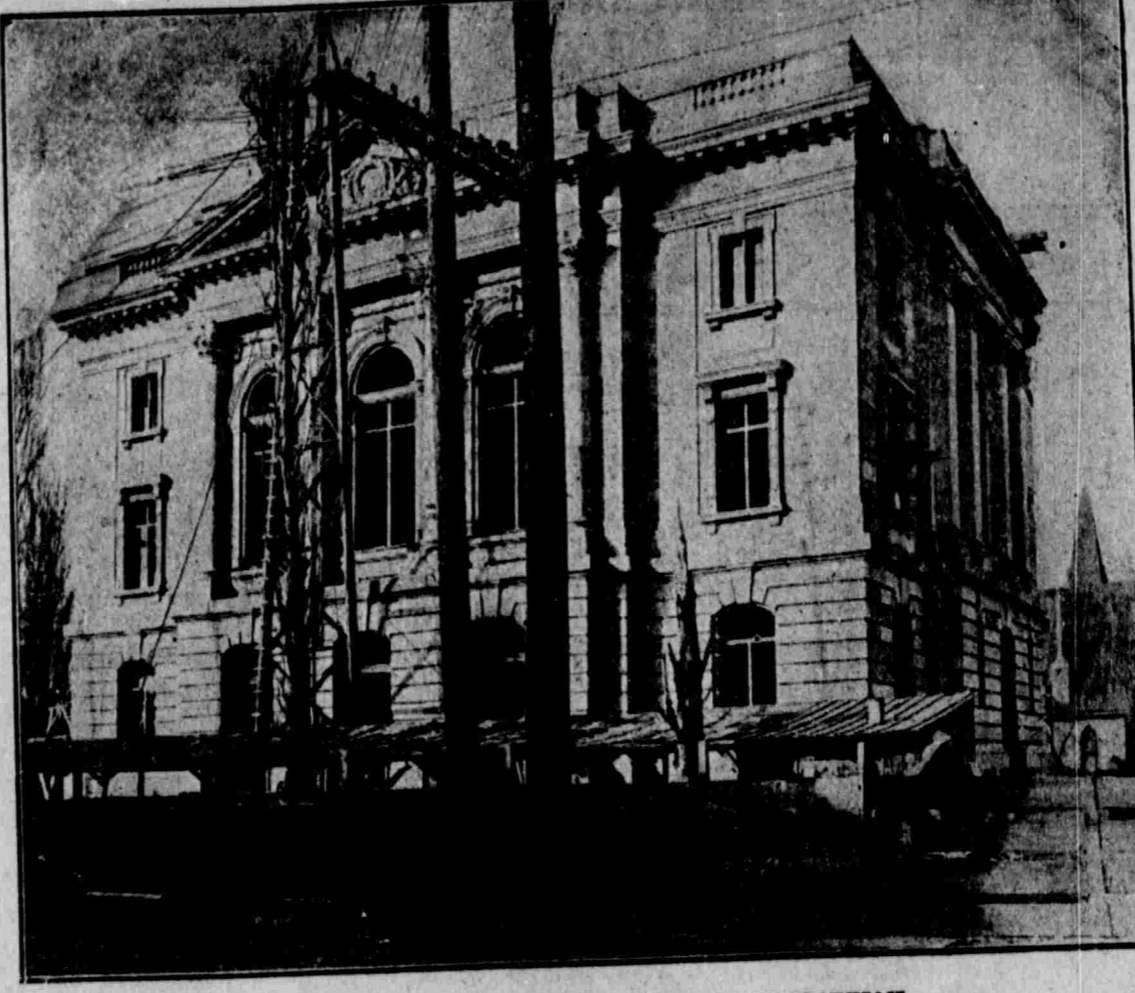
SOME IMPROVEMENTS

Some extensive railroad improvements have been made in Ogden during the past 12 months, costing about \$1,000,000, and for the coming year the contemplated improvements will cost about three times that amount.

The greatest improvement in Ogden this year was made by the Oregon Short Line, in the construction of a cut-off leading from Thirtieth street in a southwesterly direction over the sand ridge to Roy, a distance of about six miles. By the changing of this line the Short Line will save a short distance and will pull its trains directly into the depot yards instead of having to come into the yards on a "Y" and backing up to the station, as is the case now. The building of the cut-off has been a heavy expense, but will be a great improvement. Through its completion the railroad yards will be entirely rearranged next year, making more trackage and more convenience. The freight depot grounds will be all made level, giving a much better appearance to the property. The Harriman interests also built an immense power generating plant this year, which cost over \$50,000; they also spent about \$25,000 in enlarging their shops, made necessary by the great increase of repair and building work being done in Ogden. The force of employees was also increased considerably in all the departments in order to get the work out.

A large commissary building was completed this year at a cost of over \$60,000, and now all the supplies for the Harriman lines in this section are furnished from Ogden. The interior of the Union depot building has been redecorated at a cost of \$25,000. The work of grading and platting the grounds in front of the Union depot, facing Wall avenue, was commenced this fall and will be completed in the spring, planted in grass and laid out in walks and beautiful flowerbeds, an improvement that has long been needed and which will add much to the impression made on the thousands who pass through Ogden every year.

The new freight depot for the Harriman lines in Ogden, which is needed so much, will be commenced, it is expected,



\$200,000 FEDERAL BUILDING NEARING COMPLETION.

wealthy men of the state. Already the company has expended over \$250,000 in the erection of an immense smelter near the Utah Hot Springs in Weber county, and about 13 miles north of Ogden City. The plant is modern in every respect and contains the most improved machinery for refining of ores. The buildings occupy a large space of ground. The power for operating the smelter has been secured from the Brigham City electric power plant. A transmission line was completed in October to carry the power from the plant to the smelter, a distance of about 10 miles. The refining and smelting of all kinds of ores was not commenced until the beginning of this month, but the company will make a hard fight for at least a portion of the products of the

Horses and mules, 5,102 head, \$204,750
Cattle, 10,566 head, 170,384
Sheep, 30,913 head, 7,596
Swine, 1,708 head, 5,896
Colonies bees, 587, 1,440
Machinery and tools, 263,264
Total, \$723,032

BANKS AND BANKING

Ogden has six large substantial banking institutions that have been doing an unusually large business during the past 12 months. The reports from the various cashiers are that money has long time past; that those who have borrowed money from the banks have met their obligations when they became due, with little difficulty. The same deposits in all the banks in Ogden

84,937, 100 chattel mortgages, amounting to \$38,113.49. In August two supplemental mortgages were filed by railroad companies, one for \$10,000 and one for \$100,000, not included in the above statement of education to even raise the schools to a higher standard. The erection of one large sixteen-room building and the installation of several new sanitary plants in some of the older buildings was the extent of the building done by the board of education the past season. The new Lewis school, which perhaps is the most modern of any building constructed of late years, is named after the late Professor T. B. Lewis, who did so much for the public schools of this state and city. It was built at a cost of \$25,000.

According to the last census, there are 6,631 children of school age in Ogden City. Of this number 2,500 are boys and 2,231 are girls. The last month's report shows that out of this number there are a few more than 5,000 enrolled in the public schools. To teach this number of children 125 teachers and 10 assistants are employed. The average number of children to the teacher being 40.

The amount expended for all purposes last year was \$116,975.54. The cost per capita was \$21.

The Weber county public schools are taking place in the front ranks, and the children of the county are being put on an equal footing with children of the city schools. There are 3,452 pupils of school age in the county, who are taught by 13 teachers.

Besides the public schools in Ogden City, it has several private institutions of learning. The Weber stake academy, an institution of higher learning, is in Ogden. It has an attendance of between 300 and 400 pupils, and provides four courses of study: the normal, literary, the scientific, and the commercial; also a missionary course. Prof. David O. McKay is principal of the school, and he has an able corps of instructors associated with him. So rapidly is the attendance at the school



NEW UNION DEPOT COMMISSARY BLOCK.

NEW LEWIS SCHOOL BUILDING.

mines, not alone of Utah, but also of Nevada and Idaho. For the present about 100 men will be employed at the smelter on an average pay of \$3 a day, so that the building of the large plant in this county will have a beneficial effect on the business of Ogden. The company expects to erect a large number of small cottages near the works, where the employees may live with their families at a small rent. The people of Ogden welcome this great industry into the county.

ASSESSED VALUATIONS

The year 1906 saw the valuations in Weber county increase almost \$1,000,000 over the previous year, placing it in the rank of a second class county, which carries with it many advantages. According to the assessment of 1906, the county assessor, the grand total valuation of Weber county is \$15,928,001. In improvements alone in Weber county including Ogden City the valuations increased over \$250,000. This is an excellent showing for one year, and can be taken as one of the strongest proofs that the city is growing very fast. Some large fine buildings are being erected, both for business and residence purposes.

The assessment rolls show the following valuations of Ogden City:

Real estate, \$3,899,816
Improvements, 3,262,677
Personal property, 2,012,219
Total, \$9,174,712

The value of Weber county, outside of Ogden City:

Real estate, \$11,790,220
Improvements, 995,696
State board of equalization assessment of car companies, etc., 2,009,877
Personal property, 1,416,295
Total, \$15,928,001

The livestock, etc., in the entire city and county is as follows:

one year ago were \$5,848,702.59, while the statement of deposits of the banks of the city for November, 1906, was as follows: Ogden Savings bank, \$32,448.71; First National, \$1,901,132.52; Ogden State, \$1,373,280.55; Pingree National, \$396,853.12; Utah National, \$61,947.50; Commercial National, \$50,626.51. This statement alone is an indication of the marked degree of prosperity the citizens of Ogden have attained in the last 12 months will be even more prosperous than the past.

REAL ESTATE AFFAIRS

The real estate business in Ogden has been very prosperous during the year 1906. The Ogden Real Estate Men's association, formed a year ago, has a membership of 100. A monthly meeting of the association has been held at the Weber club, where many matters pertaining to the advancement of the property of the city have been discussed and through the work of the association the industrial and business advantages have been placed before the people of the west, resulting in bringing many capitalists to the city who have invested their cash in real estate both in the business and residence districts.

NUMBER OF TRANSFERS

According to the records of County Recorder Joseph Wallace, there have been during the past 12 months 1,481 deeds recorded, which is a marked increase over the previous 12 months, and the total consideration for the property transferred amounts to \$1,483,990.74. This is, however, not the correct value of the real estate transferred, as a large number of the deeds give the purchase price as \$1, so that a fair estimate of the sales of real estate in 1906 is \$2,125,000 in the city and county.

PLACED ON RECORD

Other instruments filed in the recorder's office are:

Three hundred and fifty-four real estate mortgages, amounting to \$302,844.93.

PUBLIC SCHOOLS

The public schools of Ogden rank among the foremost in the state, and every effort is being put forth by the board of education to even raise the schools to a higher standard.

The erection of one large sixteen-room building and the installation of several new sanitary plants in some of the older buildings was the extent of the building done by the board of education the past season. The new Lewis school, which perhaps is the most modern of any building constructed of late years, is named after the late Professor T. B. Lewis, who did so much for the public schools of this state and city. It was built at a cost of \$25,000.

According to the last census, there are 6,631 children of school age in Ogden City. Of this number 2,500 are boys and 2,231 are girls. The last month's report shows that out of this number there are a few more than 5,000 enrolled in the public schools. To teach this number of children 125 teachers and 10 assistants are employed. The average number of children to the teacher being 40.

The amount expended for all purposes last year was \$116,975.54. The cost per capita was \$21.

The Weber county public schools are taking place in the front ranks, and the children of the county are being put on an equal footing with children of the city schools. There are 3,452 pupils of school age in the county, who are taught by 13 teachers.

PRIVATE SCHOOLS

Besides the public schools in Ogden City, it has several private institutions of learning. The Weber stake academy, an institution of higher learning, is in Ogden. It has an attendance of between 300 and 400 pupils, and provides four courses of study: the normal, literary, the scientific, and the commercial; also a missionary course. Prof. David O. McKay is principal of the school, and he has an able corps of instructors associated with him. So rapidly is the attendance at the school

UTAH STATIONERY CO. (Inc.)



ECCLES BUILDING, OGDEN, UTAH

WHOLESALE AND RETAIL DEALERS IN

Books, Stationery, Filing Cabinets, School and Office Supplies, Fancy Goods, Valentines, Toys, Souvenirs And Views.

Mail orders given prompt and careful attention. Every courtesy extended consistent with good business. TRY US.

OFFICERS:

DAVID ECCLES, President.
HIRAM H. SPENCER, Vice-President.
HENRY H. ROLAPP, Secretary and Treasurer.

ANALGAMATED SUGAR CO.

FACTORIES:

Ogden - - - - Utah
Logan - - - - Utah
La Grande - - - Oregon

DIRECTORS:

JOSEPH F. SMITH
FRED J. KIESEL
EPHRAIM P. ELLISON
JOSEPH CLARK
HIRAM H. SPENCER
JOSEPH SCOWCROFT
ADAM PATTERSON
GEORGE STODDARD
M. S. BROWNING
W. H. WATTIS