

MISSIONARY'S VIEWS ON RUSSO-JAPANESE WAR.

Elder H. S. Ensign, president of the Japanese mission, has written from Tokyo under date of Oct. 16, to a friend in this city. The following interesting extracts have been furnished the "News."

My wife and I spent a very pleasant summer at Hojo, a small town on the shore of Tokyo bay, about 60 miles south of here. We enjoyed the delightful sea bathing, and when the sea was smooth, an exercising row on its pretty waters. As a rule the sea seldom rolled high, so this pleasure came to us almost every evening and was truly invigorating after the labors of the day. We were blessed with many friends and at our meetings, which we held semi-weekly, there was an average attendance of 107, according to count. Two Elders, Brothers Caine

us. The ordinance was performed last Sunday. We have a number of earnest investigators, among whom a man who has been a Christian for a number of years and for a time was a preacher for one of the churches (Methodist) but not being satisfied with their interpretation of the Scripture, withdrew from them and is now searching for the truth. We sincerely trust that we may be able to impress him with the importance of our message, and thereby add one more to the fold. Our new convert, visited us last evening and we learned from him that the people which whom he is living—being a student, his home being in the country—learning that he had accepted Christianity, rejoiced him and cast him out, as it were. They have given him and his wife, to find another place, during which time they will not speak to him or allow him to talk to them. He says he is happy with his wife, for it has given him a test

their minds. If war does break out, I do not think it will effect us. The desire of operation will be abandoned and Korea, and the people here will be left to their quietude. However, it will be difficult to interest them in the Gospel; their minds will be so absorbed in the war. But let us pray that peace, and not bloodshed, will be the result of all this clamor.

The clippings from the Japan Times, Oct. 15, an English paper published by Japanese, follow:

It is reported that, acting under the instructions of their respective head offices, the agents for Japan of the New York, the Canada and the Mutual Life Insurance companies have decided to refrain for the time being from accepting risks on the lives of Japanese. Russian, and Chinese officers, both military and naval.

Russia's conduct at this critical juncture, argues the Jiji, is really perplexing, being comparable to that of a man who with a drawn sword in one hand is carrying on peaceful discussion with his opponent with whom he is involved in some difficulty. Sincerely and solely desirous for a peaceful settlement of the present complication, and conducting herself with painful patience in the interests of peace during these six months, Japan can never submit to any arrangement inconsistent with her



AN INTERESTING GROUP.

Elder H. S. Ensign, Mrs. Ensign and Elder John Stoker, with a few of the natives at Naoyaku on the shore of the Japan Sea, Sunday October 4, 1893.

and Jarvis, have been assigned that district, and reports from them convey the happy news that new friends are being made daily, and their time is fully occupied teaching the people the Gospel. They have succeeded in organizing a Sunday school, and hope by this means to be able to teach many of the rising generation the plan of life and salvation before they become imbued with the follies and superstitions of their parents. I feel that our duty is to work among the youth of this nation; for therein will be our future strength. Their fathers and mothers, as a rule, have partaken too strongly of the traditions of their forefathers to allow the spirit of the Gospel to have much or any effect upon them. However, while trying to turn the minds of the young in the channels of truth, we shall not fail to do our duty in endeavoring to convert their parents.

I am pleased to be able to say that since my last letter we have had the privilege of baptizing one more soul into the Church. He was attracted to us by the announcement we have hanging at the gate, which states that meetings are held every Sunday evening commencing at 7 p. m. at which Americans, speaking in Japanese, teach the doctrines of Christ. All are welcome to attend and seats are free. After talking with him he was impressed with our teachings and from the first, manifested great interest in them, so much so, that he was convinced of their divinity and asked to become one of

timony of the divinity of the Gospel and has partly fulfilled our words to him in this respect. On the first of the present month we visited our brethren at Naoyaku and held fast meeting with them. By going there we have now crossed this island from east to west and have stood on the shores of the Pacific on the east and the Japan sea on the west. The photo shows us standing on Japan sea's coast. From here we tried to see China and Russia, but "Amari otoi deau."

TALK OF WAR.

There is a great deal of talk about the war between this country and Russia, and from what we are able to learn from the press (which cannot always be depended upon, where there is so much discussion going on), matters are shaping themselves into such an occurrence. The Japanese are working to try and effect a peaceful settlement, but the actions of the Russians are so very harassing to them that their patience is almost exhausted. The following is taken from yesterday's issue of the Tokyo Asahi: "Russia merely intends to play with Japan in the present negotiations in order to gain time for strengthening her military preparations. Russia's lack of sincere desire for the peaceful solution of the situation being thus indisputable, the course Japan has to adopt is evident. The people's minds are made up and the government must heroically cut the Gordian knot of the Manchurian problem." The enclosed clipping will give you some idea of the feeling here. You will also observe that life insurance companies are taking alarm and limiting

honor and dignity, nor are her powers of endurance inexhaustible. Japan can not tolerate any longer the procrastination of the crisis, and the authorities therefore are under obligation to strive for the realization of their aims with heroic resolution, and to put an end to this painful suspense as quickly as possible. The nation's decision is already formed, and the nation too demands the speedy solution of the present complications.

Chamberlain's Cough Remedy is Pleasant to Take.

The finest quality of granulated loaf sugar is used in the manufacture of Chamberlain's Cough Remedy, and the roots used in its preparation give it a flavor similar to maple syrup, making it quite pleasant to take. Mr. W. L. Roderick of Poolesville, Md., in speaking of this remedy, says: "I have used Chamberlain's Cough Remedy with my children for several years and can truthfully say it is the best preparation of the kind I know of. The children like to take it and it has no injurious after effect. For sale by Z. C. M. I. Drug Dept.

Beautiful Clear Skies.

Herbline exerts a direct influence on the bowels, liver and kidneys, purifying and strengthening these organs, and maintaining them in a normal condition of health; thus removing a common cause of yellow, mothy, greasy skin, and more or less of pimples, blotches and blackheads, 50c at Z. C. M. I. Drug Dept.

GENUINE DISC PLOWS.

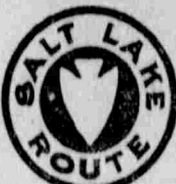
THE WESTERN UNION TELEGRAPH COMPANY.

"CONSOLIDATED WAGON & MACHINE CO.,
"Salt Lake City, Utah.

"Contract October 20th accepted, and now give you exclusive agency. HAPGOOD PLOW CO."

The exclusive sale of the only Genuine Disc Plow, namely, the "HAPGOOD-HANCOCK DISC SULKIES," was arranged and perfected when Col. M. T. Hancock, the patentee, was here October 20th, 1893, for Utah, Idaho and Wyoming.

GEORGE T. ODELL, General Manager.



TIME TABLE.

San Pedro, Los Angeles and Salt Lake City, R. Co.

DEPART.
From Oregon Short Line Depot, Salt Lake City:

For Provo, Lehi, Fairfield and Mercur, connecting at Nephi for Mantle and intermediate points on San Pedro Valley Railway 7:30 a.m.

For Garfield Beach, Tooele, stockton, Mammoth, Burns and Silver City (via Leamington cut-off) 8:00 a.m.

For Provo, American Fork, Lehi, Juab, Milford, Frisco, Callontes and intermediate points 6:05 p.m.

ARRIVE.

From Provo, American Fork, Lehi, Juab, Milford, Frisco, Callontes and intermediate points 9:35 a.m.

From Provo, Lehi, Fairfield, Mercur and San Pedro Valley Ry. points 5:35 p.m.

From Silver City, Mammoth, Eureka, stockton, Tooele and Garfield Beach 5:35 p.m.

ALL TRAINS DAILY.

Direct stage connections for all mining districts in southern Utah and Nevada. City Ticket Office, 201 Main St. Telephone 250. J. L. MOORE, Commercial Agent.

For particulars call on or address agents, Salt Lake Route, or E. W. Gillett, General Passenger Agent.



Current Time Table.

In effect June 21st, 1893.

LEAVE SALT LAKE CITY.

No. 4—For Grand Junction, Denver and points east 8:30 a.m.

No. 2—For Provo, Grand Junction and points east 9:15 p.m.

No. 4—For Provo, Grand Junction and points east 9:30 p.m.

No. 10—For Bingham, Heber, Lehi, Provo, Mantle, Marysville and intermediate points 8:00 a.m.

No. 1—For Provo, Payson, Eureka and intermediate points 9:00 p.m.

No. 11—For Ogden and all intermediate points 6:10 p.m.

No. 1—For Ogden and the west 1:45 p.m.

No. 4—From Ogden and the west 9:30 a.m.

No. 102—For Park City and all intermediate points 8:15 a.m.

ARRIVE SALT LAKE CITY.

No. 12—From Ogden and all intermediate points 9:05 a.m.

No. 1—From Provo, Grand Junction and points east 9:40 a.m.

No. 4—From Provo, Grand Junction and points east 1:35 p.m.

No. 3—From Provo, Grand Junction and points east 1:45 p.m.

No. 9—From Provo, Bingham, Heber, Marysville and intermediate points 6:00 p.m.

No. 6—From Ogden and the west 8:20 a.m.

No. 2—From Ogden and the west 8:35 p.m.

No. 7—From Eureka, Payson, Provo and intermediate points 9:30 a.m.

No. 10—From Park City 8:15 p.m.

Perfect Dining Car Service. Ticket Office, 103 W. Second South St. Postoffice Corner. Phone 266. J. A. BENTON, Gen. Agt. Pass. Dept.

A Delightful Place to Visit. A Profitable Place to Live.

SEE

CALIFORNIA

Greatest Play Ground on Earth.

Famous Places Which Everyone wants to see. Invest in a ticket to CALIFORNIA and secure rich dividends in HEALTH, PLEASURE AND WEALTH. Mountain, Valley, Rivers, Lakes and Ocean reached by the

SOUTHERN PACIFIC COMPANY'S LINES.

For descriptive and illustrative literature call at No. 201 Main Street, Salt Lake City. D. H. GRAY, General Agent.

There's no Better Service

Than that via the



From Kansas City, Saint Louis and Memphis to points in the South, Southeast and Southwest.

The Southeastern Limited

Leaving Kansas City at 6:30 P. M. daily, will take you to Springfield, Memphis, Birmingham, Atlanta, Jacksonville and all points in the Southeast.

For detailed information apply to

G. W. MARTIN
GENERAL WESTERN AGENT
1106, 17TH ST.
DENVER, COLO.



Time Table

In Effect May 1, 1903.

ARRIVE.

From Ogden, Portland, Butte, San Francisco and Omaha 8:30 a.m.

From Ogden and intermediate points 9:15 a.m.

From Ogden, Cache Valley, Chicago, St. Louis, Omaha, Denver and intermediate points 12:01 p.m.

From Ogden, Chicago, St. Louis, Kansas City, Omaha, Denver and San Francisco 4:05 p.m.

From Ogden, Cache Valley, Butte, Portland, San Francisco 8:10 p.m.

DEPART.

For Ogden, Omaha, Chicago, Denver, Kansas City and St. Louis 1:00 a.m.

For Ogden, Portland, Butte, Helena, San Francisco and intermediate points 9:45 a.m.

For Ogden, Omaha, Chicago, Denver, Kansas City, St. Louis and San Francisco 12:50 p.m.

For Ogden, Cache Valley, Denver, Kansas City, Omaha, St. Louis and Chicago 5:45 p.m.

For Ogden, Cache Valley, Butte, Helena, Portland, San Francisco and intermediate points 12:30 a.m.

T. M. SCHUMACHER, Traf. Mgr. D. E. BURLEY, G. P. & T. A. D. S. SPENCER, A. G. P. & T. A.

City Ticket Office, 201 Main Street. Telephone 250.

COLLEAGUE-UTAH



SHORT LINE.

TO ST. LOUIS.

Through car Salt Lake City to St. Louis and Kansas City. Only one change to New York, Buffalo and principal points east—low rates for summer travel. Especial attention to ladies and children.

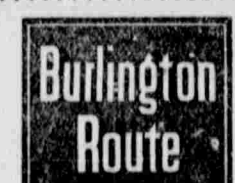
Tourist sleepers through to Chicago, Boston and other points, without change.

TWO TRAINS DAILY.

Inquire at ticket office, 121 Dooly Block, Salt Lake City. Any information cheerfully given.

G. P. & T. A. H. C. TOWNSEND, St. Louis, Mo.

C. A. TRIPP, C. P. A., Missouri Pacific Ry., Salt Lake City, Utah.



Irrigated Lands.

The Burlington has recently built branches into Big Horn Basin and North Platte Valley.

These sections are now the scene of intense activity in irrigation development.

Lands are cheap now—as Colorado and Utah irrigated lands once were, and history will certainly repeat.

It will pay you to investigate. I will be glad to send you folders about these lands free on request.

Tickets

79 W. Second South St.

R. F. NESLEN, Gen. Agent, SALT LAKE CITY.



Atchison, Topeka & Santa Fe.

'Santa Fe Route.'

Direct Line from Utah to Kansas City, St. Joseph, Chicago, Galveston, El Paso, and the Mining Camps of New Mexico and Arizona.

3 Trains Daily 3.

For particulars about REDUCED RATES EAST this summer, apply to

C. F. WARREN, Gen'l Agent, 411 Dooly Block, Salt Lake City, Utah.

Steamship Tickets

At this office you can buy tickets to and from Europe via every line which crosses the Atlantic—the shortest and cheapest as well as the fastest and highest priced.

Rates are as low as the lowest.

Now is the time to plan that winter trip. Let's talk it over.



E. DRAKE, Dist. Pass. Agent, C. A. BIBLE, Trav. Pass. Agent, 100 West 2nd South St., SALT LAKE CITY, - UTAH.

HAL S. RAY, General Agent, Denver, Colo.

UNION PACIFIC Three Trains Daily

TO OMAHA KANSAS CITY TO CHICAGO ST. LOUIS

and all Principal Eastern Points

Many hours quicker than any other line

No Change of Cars, "THE OVERLAND ROUTE" all the way.

Electric-Lighted Trains running every day.

Full information furnished on application to City Ticket Office

201 Main Street, Salt Lake City.

EACH OF THE THREE DAILY TRAINS

TO CHICAGO

OVER THE

UNION PACIFIC AND

CHICAGO, MILWAUKEE & ST. PAUL

LINE

CARRY THROUGH STANDARD SLEEPERS, TOURIST SLEEPERS, and CHAIR CARS.

C. S. WILLIAMS,

Commercial Agent, Chicago, Milwaukee & St. Paul Ry.,

106 W. Second South, Salt Lake City.

DO YOU KNOW



When going East you have choice of three through trains, via the Union Pacific and Northwestern Line?

Leave Salt Lake

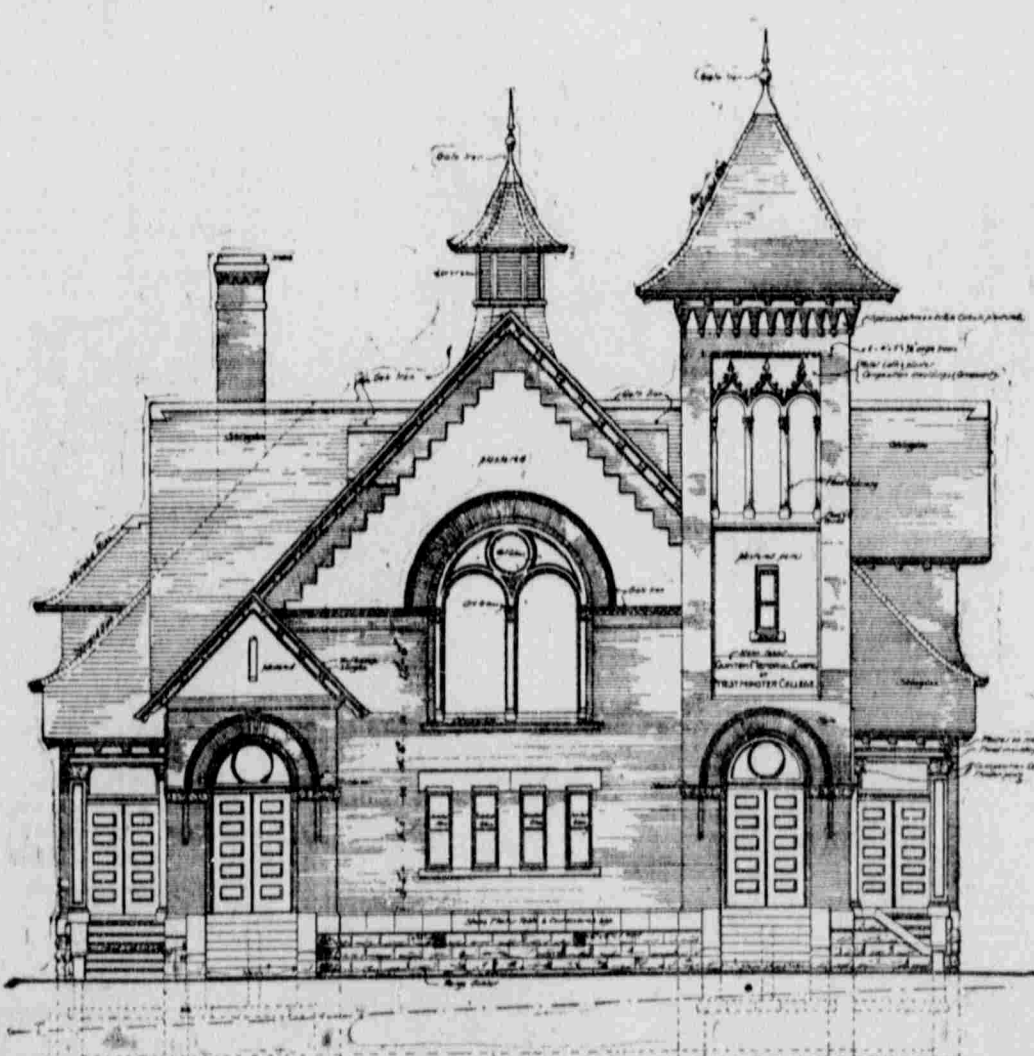
7 a.m., 12:50 p.m., 5:45 p.m.



ADVERTISERS SHOULD USE THE Semi-Weekly News

If they desire to reach the people of the Western States and Territories in their homes.

CIRCULATION BOOKS OPEN TO ADVERTISERS.



NEW WESTMINSTER COLLEGE CHAPEL.

The above is the front elevation of the new Westminster College chapel to be erected at the corner of Eleventh East and Eleventh South streets at a cost of \$10,000. The structure will be 45 feet square, with a seating capacity in the auditorium of 500, of 500 in the Sunday school room, and 150 in the galleries, a total of 650 seats. The whole interior can be thrown into one large auditorium. The heating will be the indirect kind, with ventilation. There will be spacious parlors, a pastor's study and kitchen apartments. The lighting will be by electricity, and a location has been reserved for a pipe organ. The architects are J. A. Headlund & Co.