

POPPING CORN AT CHRISTMAS TIME

By Edgar Welton Cooley

In the cheer of a Christmas evening as the shadows come and go,
Kissed into baby beings by the flickering fire's glow,
There's a melody enchanting, a strain that's heaven's own,
In the spitter, spatter, spatter of the hopping, popping corn.

From the glimmer of the backlog smoke specters wake from sleep,
And in grim and greivous frolic, like fantastic gobins, leap,
By two and three and singly they dance and twist and turn,
To the spitter, spatter, spatter of the hopping, popping corn.

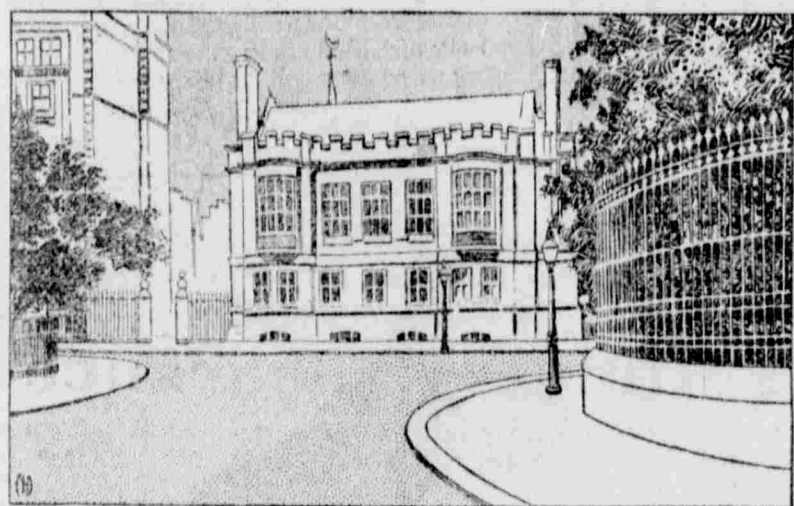
Oh, melodies of childhood! Oh, songs of yesterday!
Your notes may lose its music or grow weary on the way,
But olden strains will never perish—those of yester that was born
With the spitter, spatter, spatter of the hopping, popping corn.

COPYRIGHT, 1905, BY EDGAR WELTON COOLEY



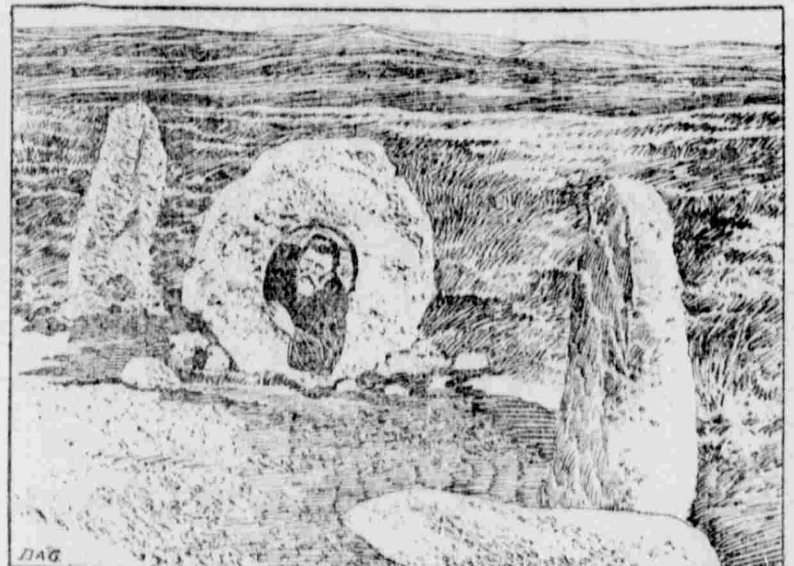
UNIQUE PHASES OF LIFE FROM ALL OVER THE WORLD

LONDON OFFICE OF THE ASTOR ESTATE.



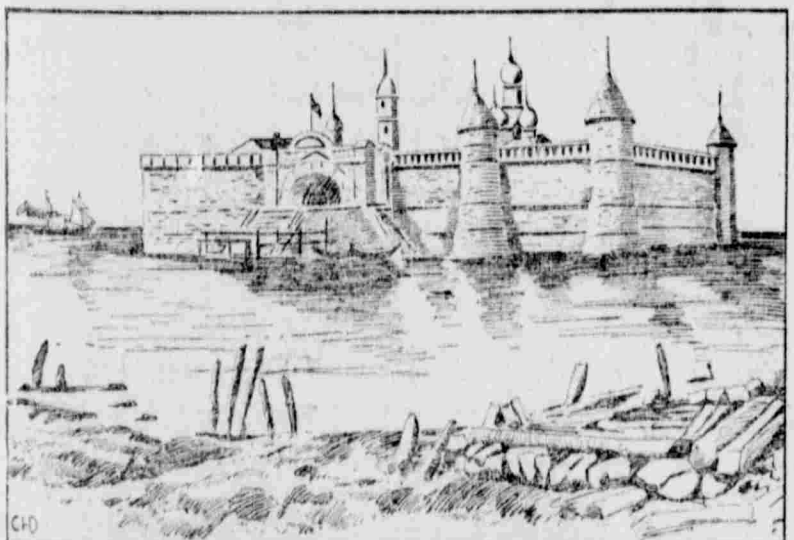
The picturesque building shown in the picture is the new office recently completed for William Waldorf Astor in London. Next to the Bank of England, it is believed to be the strongest building in London. It was designed by the architect of Truro cathedral and is one of the most striking business buildings in the Thames embankment.

CURIOUS DRUIDICAL REMAINS IN ENGLAND.



Interesting stone relics like these shown in the cut are to be seen at the present day in many parts of Cornwall and Devon, in England. A large Druidical rock having a hole in the center is called a men-an-tol. There are many superstitions connected with these ancient stones, and the deep mystery surrounding the origin of these megalithic relics has been the inspiration of many curious legends. In former times it was the custom of parents to pass rickety and deformed children through the holes, with the hope of obtaining a cure.

A NOTORIOUS RUSSIAN FORTRESS AND PRISON.



The fortress herewith illustrated is on an island at the junction of the Neva river and Lake Ladoga, about forty miles from St. Petersburg. For many years it has been notorious in Russian criminal annals for the horrible punishments which have been inflicted upon political prisoners within its walls. It has been used as a prison since 1702 and has been the living tomb of hundreds of persons suspected of disloyalty to the house of Romanoff.

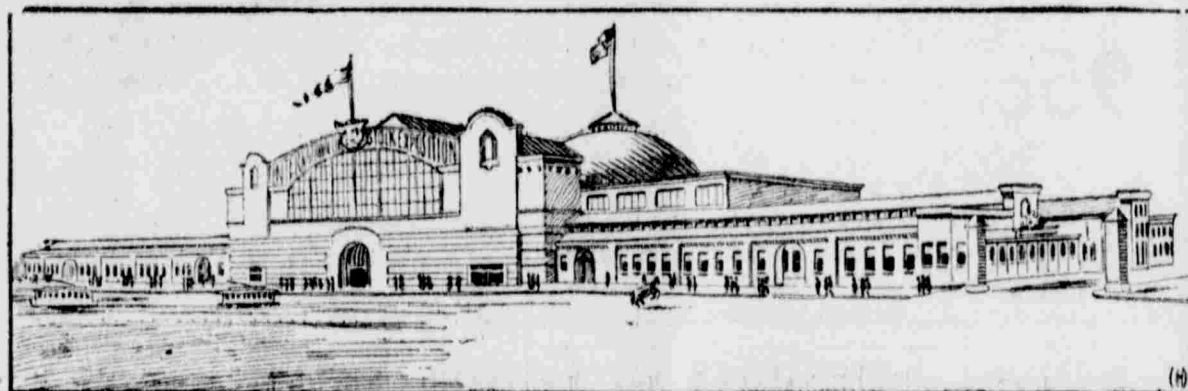
ODDS AND ENDS.

Mrs. Stoessel, wife of General Stoessel, set of Port Arthur fame, recently paid \$124,000 for a house in St. Petersburg. Malta is the most thickly populated island in the world. It has 1,360 people to the square mile. Barbados has 1,054 people to the square mile. Within the last twenty years 129 English peerages have been created, while

fifty-four have become extinct. Nearly half the peers and baronets have inherited or received their titles within the last ten years. Nearly everybody in Abyssinia carries a Robinson Crusoe straw umbrella, which cannot be closed. Out of every 1,000 children born 839 survive their fifth year in New Zealand,

\$29 in New South Wales and \$44 in Victoria as against 837 in Ireland, 752 in England and Wales, 701 in France, 613 in Austria and 571 in Spain. Japan has 4,465 miles of railroad—1,544 owned by the government, the rest by private corporations. The operation of these roads is fairly profitable. The bicycle still holds its own abroad, as is shown by the fact that the exports of bicycles and parts of bicycles from

LARGEST EXPOSITION BUILDING IN THE WORLD.



The structure shown in the picture is the new exposition building of the international live stock show at the Union stockyards at Chicago. It is for permanent use and will be used for the annual shows of the International Live Stock association. The building is 609 by 319 feet, and the auditorium is 310 by 290. The arena is 250 by 190 feet, and the total floor space is 243,609 square feet. The cost of the building has been \$230,000, and it is the largest exposition hall in the world.

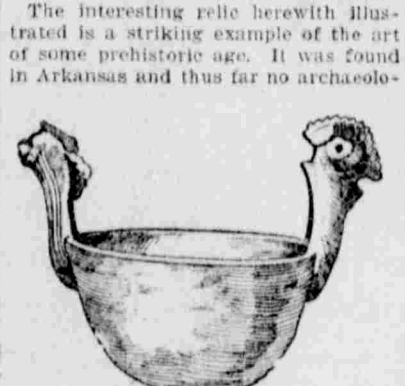
MODERN TREATMENT OF SIMIANS.

As may be seen from the picture, the modern treatment of consumptive monkeys has kept pace with that which has been found to be most efficacious for the human race. Formerly apes and all other forms of monkeys afflicted with tuberculosis were kept at a temperature of about 80 degrees in an unventilated house and every breath of air was rigidly excluded. Nowadays the keepers of zoological establishments keep their phthisical patients in the open air as much as possible, clothing them in comfortable sweaters to exclude the frosty air.



PREHISTORIC ARKANSAS BOWL. The interesting relic herewith illustrated is a striking example of the art of some prehistoric age. It was found in Arkansas and thus far no archaeologist has been able to place it. It seems to have been used by some primitive people as a bowl and is ornamented with grotesque heads. The designer must have antedated the Indian inhabitant of the time of Columbus, but who he may have been is still a secret of the mysterious past.

PREHISTORIC ARKANSAS BOWL.

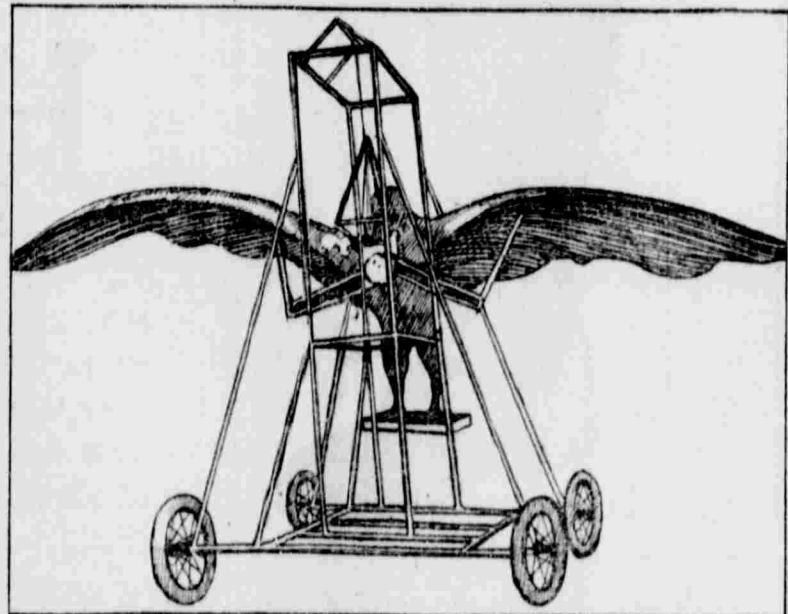


MASAI TROOPS BELONGING TO THE EAST AFRICAN GERMAN ARMY.



The warlike band shown in the cut are members of the German East African forces recruited from the Masai, the most courageous among the native tribes. Both men and women delight in warfare, and the German authorities of the East African protectorate have made a great effort to conciliate them and to obtain their services. They are especially useful in the hill campaigns and make capital spies. The Masai women, as may be seen from the picture, wear a curious armor and neck piece made of iron wire.

A NOVEL ENGLISH FLYING MACHINE.

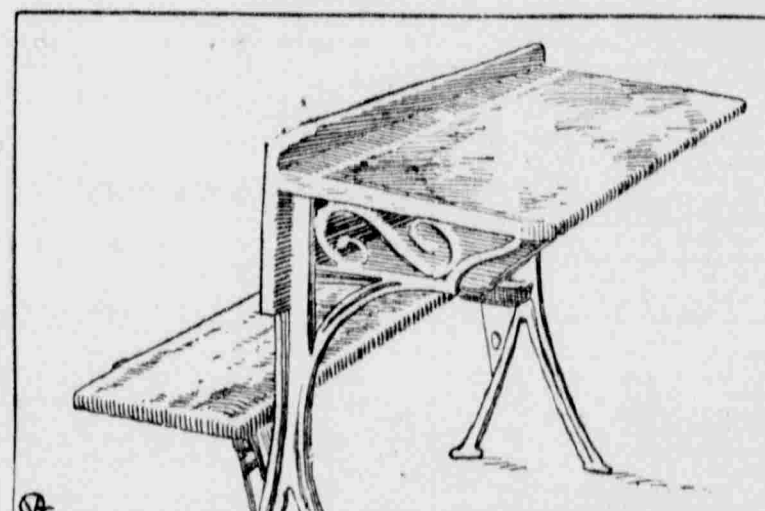


The curious flying machine shown in the picture is the invention of an English aeronaut and carries great wings, with which he expects to move about in the upper air like a bird. The machinery is so arranged that the wings expand and close a hundred times a minute. Up to date the designer has not found the courage to make an ascension in his machine and at last accounts was looking for some one who could summon the necessary nerve.

Germany during the years 1902, 1903 and 1904 were valued at \$2,427,290, \$4,416,600 and \$4,795,700 respectively. The importation of paints, inks and colors into Chile average about \$800,000 annually in value. Germany and Great Britain are the chief supply sources, the United States participating only to the amount of \$11,500 in the importation of these articles during 1905. Removed from Westminster abbey to

make room for the memorial window to the late Duke of Westminster, the old window has been offered to the dean and chapter of Cape Town cathedral. There is a monopoly on one of the isles of the Pacific that works in a curious way. One man has the exclusive right to catch bait in a net off the coast of the island. Fishing is the only thing to do on the island, so all the other inhabitants are dependent upon this one man. He has the habit of getting intoxicated now and then, so all the rest have to remain idle until he sobers up enough to catch bait for them. A man in Antwerp caught a swallow that had a nest under his roof and had it set free with a number of carrier pigeons at 7:15 in the morning. It reached Antwerp, a distance of 235 kilometers, at 8:23, while

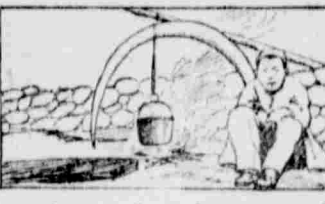
GROVER CLEVELAND'S OLD SCHOOL DESK.



The desk herewith illustrated was formerly used by the only living ex-president when he was a barefooted schoolboy at the public school of Fayetteville, N. Y. In 1848, when Grover Cleveland was nine years of age, his father, who was a Presbyterian minister, was called to Fayetteville, and his young son began his school life at the little one story village schoolhouse, which could accommodate only twenty pupils. Here the future president prepared for the academy, a mile or so distant, and when he was leaving he carved his name on the desk and added the date, January, 1850. Nathan Straus, who is an intimate friend of the ex-president, succeeded in obtaining the relic and has sent it to Mr. Cleveland at Princeton, N. J.

A TUSK POT HANGER.

The pot hanger in the picture is a mammoth ivory tusk of some extinct animal found on the treeless plains of eastern Siberia by a native who was inspired to use it for the purpose indicated. Judging from the size of the tusk, the animal to which it once be-



longed must have been a good deal larger than anything known to present civilization. These naked Siberian plains seem to have been the home of prehistoric mammoths of which no species remains at the present day.

It is held in Germany that the tipping evil had led to the bribery method which is so vexatious to business men.

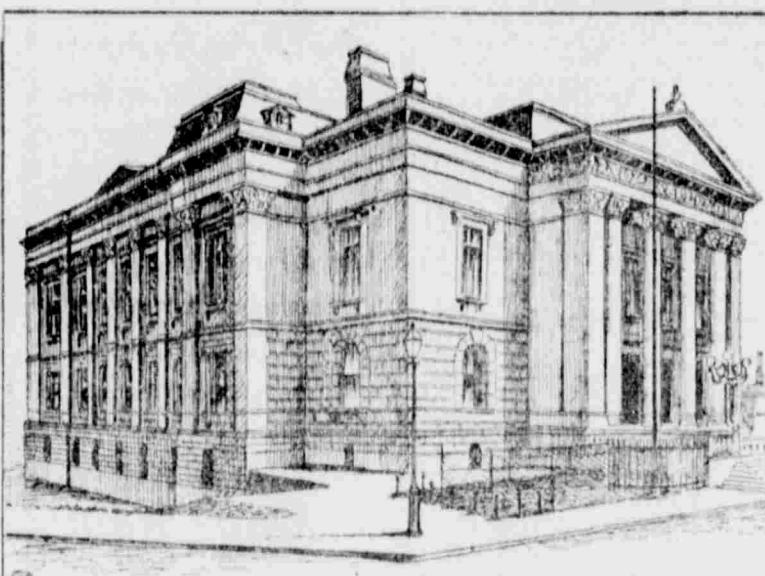
OLIVER CROMWELL'S BIRTH-PLACE.

The old mansion in the picture was the birthplace of Oliver Cromwell, and it is a typical country squire's home of the sixteenth century. There are comparatively few relics of the protector in



existence, but this estate at Huntingdon remains practically unchanged. It has been out of the hands of his descendants for many years and has recently been offered for sale. On account of its associations this old estate is not likely to go for a song.

LEGISLATIVE BUILDING AT HELSINGFORS.



The imposing structure herewith illustrated is the legislative palace at Helsingfors, the capital of Finland. During the recent political disturbance in the grand duchy the Russian flag was removed from this building and the national colors of Finland were raised. The senate, which was composed of Russian sympathizers, was driven from the premises and the legislative halls were filled with a throng of patriots, who sang national songs and made defiant speeches.

habitants are dependent upon this one man. He has the habit of getting intoxicated now and then, so all the rest have to remain idle until he sobers up enough to catch bait for them. A man in Antwerp caught a swallow that had a nest under his roof and had it set free with a number of carrier pigeons at 7:15 in the morning. It reached Antwerp, a distance of 235 kilometers, at 8:23, while

the pigeons did not arrive till 11:30. It had flown at the rate of 3,507 meters a minute as against 923 meters by the pigeons. A shipyard at Onizawa, Japan, still in operation, was established 1,500 years ago. Transportation of fruits and vegetables in a vacuum is said to have been tried successfully by a California inventor.