

### MARRIAGE BY PHOTOGRAPHY.

The Asahi Shimbun has an article which throws an interesting light on the question alluded to in our last issue, namely, marriages by photograph between Japanese residing in America and their countrymen in Japan. It appears that two movements of a self-defense nature have recently been organized by Japanese residents in the United States.

The first is a crusade against gambling by the Chinese, a vice which is indulged in on such a scale and which involves such evil results that the presence of orientals in general becomes objectionable in the eyes of American citizens. Japanese agitation for the suppression of this vice promises to have the result of clearly differentiating them from its practice.

The second movement has for its immediate outcome this idea of nuptials by photograph. There are about 100,000 Japanese in the United States, and fully 90 per cent of them lead single lives. Such a condition was tolerable enough so long as a settler's object consisted merely in earning as fast as possible money enough to return home. But in view of the anti-oriental spirit now prevailing in the United States, the Japanese residents see that the only practical remedy lies in becoming permanent settlers, and in carrying out that program a wife is a prime essential.

To return to Japan, however, for the purpose of providing himself with a wife means not only that a man would have to incur great expense, but also that it would be more than doubtful whether he could reenter the states subsequently. Therefore the only reasonable alternative is to get a wife over from Japan without going to fetch her.

All this appears to have been anticipated very cleverly by the well-known Mr. Shimanuki, a prominent Christian. Some time ago he established in the Koshikawa suburb of Tokio an institution called the Ryokkokai, which may be freely translated Self-help Society.

The inmates of this institution, mostly graduates from girls' high schools, receive education in all subjects likely to be of practical utility, such as housekeeping, cooking, sewing, typewriting, etc. In fact they are expressly equipped to be the wives of Japanese settlers in the United States.

It is between this institution and the Japanese settlers that photographs have been exchanged, and by this means the settlers are enabled to obtain helpmates whose qualifications and record are known and whose appearance is rendered familiar by the photographs. The idea is that if the settlers thus marry and bring up families their sons will become naturalized American citizens, and by degrees the anti-Japanese feeling in the United States will die out. The conception seems eminently practical and useful, nor can we doubt for a moment that the Japanese authorities in Tokio will refrain from interfering with the program.

#### HIGHEST BALLOON ASCENSION.

The record for this sport is held by two Englishmen, who, in 1852, ascended to the height of almost 37,000 feet (about seven miles). At the fifth mile-post, if we may use the expression, one of them became insensible, but, fortunately,

they both returned in safety. Some years later, in 1875, M. Tissandier and some friends went up to the height of 23,150 feet, or a little over five miles. This trip, however, ended in a tragedy, for M. Tissandier alone came down alive, his friends dying in mid-air.

Crescent Theater, Opposite Keith-O'Brien's. "Moving Pictures that go some." Where the Breakers Roar. "Come in, the Water's fine."

KILL HILL OPENING, OCT. 12. See Taylor Bros., 30 Main St.

# Z.C.M.I. Conference and State Fair Specials

## Ladies' Suit Dept.

The demand for Ladies' Tailored Suits is simply phenomenal. Re-order shipments are now here, making our showing varied and complete. The graceful, flowing lines, button and braid trimmings, and the exceeding popular slashed effects of the Directoire period predominate. Your size, color, style and perfect fit is here. Prices range from

### \$15 to \$125

A very beautiful showing of handsome Empire Coats, in close fitting and loose effects, blacks, colors and novelties from

#### \$7 to \$60

Babies', Children's and Misses' Coats in bear skin, plain cloth, striped velvet and novelty cloths. Babies' from 1 to 5 years, Children's from 4 to 6 and Misses' from 8 to 14.

Splendid variety of New Waists in fancy nets, silk and Satins, made with the new long close fitting sleeves. Also a large variety of wash waists, in damask, batiste, mohair and Oxfords.

Full range of prices and styles in separate Skirts, Panamas, broadcloths, Silks, Satins and Mohairs.

## Trimmed Hats 1-4 Off

Exceptional bargains in stylish, trimmed Millinery. The most fashionable styles for Fall and Winter wear. Beautiful new ideas from the East and the clever adaptations of our own millinery experts keep our showing continually up-to-date. Commencing Monday morning all trimmed hats will be sold at . . . **One-Fourth Off**

WE GIVE SPECIAL ATTENTION TO ORDER WORK

## Attractive Glove Specials

Women's 16 button Glace Gloves, black, tans, ox-bloods, dark green and navy blue. All sizes. Special price, a pair . . . **\$2.75**

Women's one and two clasp Pique Street Gloves, all colors and sizes, good \$1.75 values. Special for Conference and State Fair Week . . . **\$1.25**



## Staples Reduced

### TABLE DAMASK

40c A YARD FOR . . . 32c  
65c A YARD FOR . . . 52c  
75c A YARD FOR . . . 60c  
1.00 A YARD FOR . . . 80c  
1.50 A YARD FOR . . . 1.20  
2.00 A YARD FOR . . . 1.60  
2.50 A YARD FOR . . . 2.00  
3.00 A YARD FOR . . . 2.40

### TABLE NAPKINS

1.00 VALUES FOR . . . 80c  
1.50 VALUES FOR . . . 1.20  
2.00 VALUES FOR . . . 1.60  
2.50 VALUES FOR . . . 2.00  
3.00 VALUES FOR . . . 2.40  
4.00 VALUES FOR . . . 3.20  
5.00 VALUES FOR . . . 4.00  
6.00 VALUES FOR . . . 4.80  
7.00 VALUES FOR . . . 5.60

### White, Colored and Brown Linens

25c A YARD FOR . . . 20c  
30c A YARD FOR . . . 24c  
35c A YARD FOR . . . 28c  
40c A YARD FOR . . . 32c  
45c A YARD FOR . . . 36c  
50c A YARD FOR . . . 40c  
55c A YARD FOR . . . 44c  
60c A YARD FOR . . . 48c  
65c A YARD FOR . . . 52c  
70c A YARD FOR . . . 56c  
75c A YARD FOR . . . 60c  
80c A YARD FOR . . . 64c  
85c A YARD FOR . . . 68c  
90c A YARD FOR . . . 72c  
95c A YARD FOR . . . 76c  
1.00 A YARD FOR . . . 80c  
1.25 A YARD FOR . . . 1.00  
1.50 A YARD FOR . . . 1.20  
1.75 A YARD FOR . . . 1.40  
2.00 A YARD FOR . . . 1.60

### LINEN TABLE SETS

5.00 VALUES FOR . . . 4.00  
6.00 VALUES FOR . . . 4.80  
7.00 VALUES FOR . . . 5.60  
8.00 VALUES FOR . . . 6.40  
9.00 VALUES FOR . . . 7.20  
10.00 VALUES FOR . . . 8.00  
12.00 VALUES FOR . . . 9.60  
15.00 VALUES FOR . . . 12.00

### TURKISH TOWELS

10c VALUES FOR . . . 8-1-2c  
12c VALUES FOR . . . 10c  
15c VALUES FOR . . . 12c  
20c VALUES FOR . . . 16c  
25c VALUES FOR . . . 20c  
30c VALUES FOR . . . 24c  
40c VALUES FOR . . . 32c  
50c VALUES FOR . . . 40c

### LINEN TOWELS

25c VALUES FOR . . . 20c  
30c VALUES FOR . . . 24c  
35c VALUES FOR . . . 28c  
40c VALUES FOR . . . 32c  
45c VALUES FOR . . . 36c  
50c VALUES FOR . . . 40c  
55c VALUES FOR . . . 44c  
60c VALUES FOR . . . 48c  
65c VALUES FOR . . . 52c  
70c VALUES FOR . . . 56c  
75c VALUES FOR . . . 60c  
80c VALUES FOR . . . 64c  
85c VALUES FOR . . . 68c  
90c VALUES FOR . . . 72c  
95c VALUES FOR . . . 76c  
1.00 VALUES FOR . . . 80c  
1.25 VALUES FOR . . . 1.00  
1.50 VALUES FOR . . . 1.20

### WHITE WAISTINGS

25c A YARD FOR . . . 20c  
30c A YARD FOR . . . 24c  
35c A YARD FOR . . . 28c  
40c A YARD FOR . . . 32c  
45c A YARD FOR . . . 36c  
50c A YARD FOR . . . 40c

### FANCY WAISTINGS

30c A YARD FOR . . . 24c  
35c A YARD FOR . . . 28c  
40c A YARD FOR . . . 32c  
45c A YARD FOR . . . 36c  
50c A YARD FOR . . . 40c  
55c A YARD FOR . . . 44c  
60c A YARD FOR . . . 48c  
65c A YARD FOR . . . 52c  
70c A YARD FOR . . . 56c  
75c A YARD FOR . . . 60c  
80c A YARD FOR . . . 64c  
85c A YARD FOR . . . 68c

### WHITE AND COLORED LAWNS

10c A YARD FOR . . . 8-1-2c  
12c A YARD FOR . . . 10c  
15c A YARD FOR . . . 12c  
20c A YARD FOR . . . 16c  
25c A YARD FOR . . . 20c  
30c A YARD FOR . . . 24c  
35c A YARD FOR . . . 28c  
40c A YARD FOR . . . 32c  
45c A YARD FOR . . . 36c  
50c A YARD FOR . . . 40c  
55c A YARD FOR . . . 44c  
60c A YARD FOR . . . 48c  
65c A YARD FOR . . . 52c  
70c A YARD FOR . . . 56c  
75c A YARD FOR . . . 60c

### LONG CLOTH

12-12 YARD LENGTHS  
1.25 REGULAR FOR . . . \$1.40  
2.00 REGULAR FOR . . . \$2.00  
2.25 REGULAR FOR . . . \$2.50  
2.50 REGULAR FOR . . . \$3.00  
2.75 REGULAR FOR . . . \$3.25  
3.00 REGULAR FOR . . . \$3.50  
3.25 REGULAR FOR . . . \$3.75  
3.50 REGULAR FOR . . . \$4.00

All Bates' Seersuckers, A. F. C. and Red Seal Ginghams, 10c a yard. . . . . **10c**

LIMIT 10 YARDS TO A CUSTOMER

ALL SHEETING AND PILLOW CASING 20% OFF  
ALL SHEETS AND PILLOW CASES 20% OFF

### OUTING FLANNEL

Light and dark colors.  
10c A YARD FOR . . . 8-1-2c  
12c A YARD FOR . . . 10c

### GINGHAM

Amoskeag Apron Gingham, a yard . . . . . 1c

### PLAID SUITING

Large line of plaid cotton suitings, suitable for school and house dresses. Regular 20c and 25c a yard for . . . 15c

### WOOL PLAID WAISTINGS

40c A YARD FOR . . . 32c  
50c A YARD FOR . . . 40c  
60c A YARD FOR . . . 48c  
70c A YARD FOR . . . 56c  
80c A YARD FOR . . . 64c  
90c A YARD FOR . . . 72c  
1.00 A YARD FOR . . . 80c

### COTT'N BLANKETS

10-4 size.  
65c VALUES FOR . . . 52c  
75c VALUES FOR . . . 60c  
1.00 VALUES FOR . . . 80c  
1.25 VALUES FOR . . . 1.00  
1.50 VALUES FOR . . . 1.20  
1.75 VALUES FOR . . . 1.40  
2.00 VALUES FOR . . . 1.60  
2.25 VALUES FOR . . . 1.80  
2.50 VALUES FOR . . . 2.00  
2.75 VALUES FOR . . . 2.20  
3.00 VALUES FOR . . . 2.40  
3.25 VALUES FOR . . . 2.60  
3.50 VALUES FOR . . . 2.80  
3.75 VALUES FOR . . . 3.00  
4.00 VALUES FOR . . . 3.20  
4.25 VALUES FOR . . . 3.40  
4.50 VALUES FOR . . . 3.60  
4.75 VALUES FOR . . . 3.80  
5.00 VALUES FOR . . . 4.00  
5.25 VALUES FOR . . . 4.20  
5.50 VALUES FOR . . . 4.40  
5.75 VALUES FOR . . . 4.60  
6.00 VALUES FOR . . . 4.80  
6.25 VALUES FOR . . . 5.00  
6.50 VALUES FOR . . . 5.20  
6.75 VALUES FOR . . . 5.40  
7.00 VALUES FOR . . . 5.60  
7.25 VALUES FOR . . . 5.80  
7.50 VALUES FOR . . . 6.00  
7.75 VALUES FOR . . . 6.20  
8.00 VALUES FOR . . . 6.40  
8.25 VALUES FOR . . . 6.60  
8.50 VALUES FOR . . . 6.80  
8.75 VALUES FOR . . . 7.00  
9.00 VALUES FOR . . . 7.20  
9.25 VALUES FOR . . . 7.40  
9.50 VALUES FOR . . . 7.60  
9.75 VALUES FOR . . . 7.80  
10.00 VALUES FOR . . . 8.00

### WOOL BLANKETS

3.00 VALUES FOR . . . 2.40  
3.75 VALUES FOR . . . 3.00  
4.50 VALUES FOR . . . 3.60  
5.25 VALUES FOR . . . 4.20  
6.00 VALUES FOR . . . 4.80  
6.75 VALUES FOR . . . 5.40  
7.50 VALUES FOR . . . 6.00  
8.25 VALUES FOR . . . 6.60  
9.00 VALUES FOR . . . 7.20  
9.75 VALUES FOR . . . 7.80  
10.50 VALUES FOR . . . 8.40  
11.25 VALUES FOR . . . 9.00  
12.00 VALUES FOR . . . 9.60

### BED QUILTS

Running in price from \$1.25 to \$30.00, at 20 per cent off.

### BED SPREADS

1.00 VALUES FOR . . . 80c  
1.25 VALUES FOR . . . 1.00  
1.50 VALUES FOR . . . 1.20  
1.75 VALUES FOR . . . 1.40  
2.00 VALUES FOR . . . 1.60  
2.25 VALUES FOR . . . 1.80  
2.50 VALUES FOR . . . 2.00  
2.75 VALUES FOR . . . 2.20  
3.00 VALUES FOR . . . 2.40  
3.25 VALUES FOR . . . 2.60  
3.50 VALUES FOR . . . 2.80  
3.75 VALUES FOR . . . 3.00  
4.00 VALUES FOR . . . 3.20  
4.25 VALUES FOR . . . 3.40  
4.50 VALUES FOR . . . 3.60  
4.75 VALUES FOR . . . 3.80  
5.00 VALUES FOR . . . 4.00  
5.25 VALUES FOR . . . 4.20  
5.50 VALUES FOR . . . 4.40  
5.75 VALUES FOR . . . 4.60  
6.00 VALUES FOR . . . 4.80  
6.25 VALUES FOR . . . 5.00  
6.50 VALUES FOR . . . 5.20  
6.75 VALUES FOR . . . 5.40  
7.00 VALUES FOR . . . 5.60  
7.25 VALUES FOR . . . 5.80  
7.50 VALUES FOR . . . 6.00  
7.75 VALUES FOR . . . 6.20  
8.00 VALUES FOR . . . 6.40  
8.25 VALUES FOR . . . 6.60  
8.50 VALUES FOR . . . 6.80  
8.75 VALUES FOR . . . 7.00  
9.00 VALUES FOR . . . 7.20  
9.25 VALUES FOR . . . 7.40  
9.50 VALUES FOR . . . 7.60  
9.75 VALUES FOR . . . 7.80  
10.00 VALUES FOR . . . 8.00

### REMNANTS

A great variety of Remnants of all kinds—sheetings, calicoes, silks, satins, white waistings, colored waistings, gingham, seersuckers, cotton dress, wool dress goods and many other kinds at GREATLY REDUCED PRICES.

All Fancy Covered Cushions 20% OFF



## Entire Line of Silks and Dress Goods 20% Off



### \$1 Taffeta Silk 55c

Sells regularly at \$1.00 a yard, and is very suitable for full dresses, waists and underskirts. Quite fortunately our buyer obtained the silk at a manufacturer's sacrifice sale and our patrons are to be given the benefit of the purchase. Taffeta Silk, 19 inches wide, a good value at the regular price, **55c** for . . . . .

### Regular 65c Dress Goods for 45 Cents

All wool checks, stripes and mixtures, for children's and misses, wear, regularly sold at 65c a yard, special . . . **45c**

Nice line of all wool Remnants **Half Price**

### Hosiery and Underwear Specials

Ladies' corset covers, lace trimmed, with beading. A bargain at **25c** Special.

Boys' and girls' school hose samples. These are a black cotton hose with fast and stainless dye. Bargains at 25c. Special . . . **15c**

Ladies' black cotton hose, with shaped toe and seamless, guaranteed fast dye. Regular price 25c. Special . . . **25c**

Ladies' black cashmere hose. The only hose that is knit to fit without a seam. Two fine values at—**35c and 50c a pair**

Black cotton fleeced pants for children, a pair . . . **35c**

Children's wool vests and pants, in light gray. According to size—**30c up to 70c**

Children's cotton fleeced vests and pants, in white and gray. According to size from—**15c up to 60c**

Ladies' white fleeced vests and pants. Special price 65c. . . . . **35c**

Ladies' Munsing vests and pants, a high grade cotton fleeced fabric in white and gray. Special . . . . . **75c**

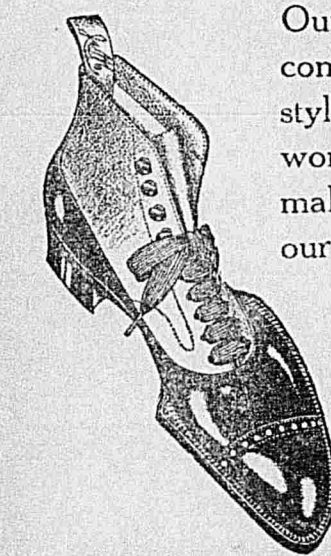
Children's cotton fleeced union suits in gray, green, ecru, Munsing make. Regular price 65c. . . . . **60c**

Children's cotton fleeced union suits, in gray and white—drop seat. Regular 85c values. Special . . . . . **75c**

One lot ladies' and children's slightly soiled knitted underwear **Half Price** while they last.

WE ARE NOW SHOWING AN ELEGANT LINE OF INFANTS' AND CHILDREN'S FALL AND WINTER BONNETS AND HATS.

## Shoe Excellence Is Our Pride



Our stock for Fall is now complete in Shoes of style and quality for men, women and children. We make it a point to please our customers in every legitimate way, which is the secret of our success. **Prices Lowest Qualities Highest**

### Pictorial Review Patterns

The simplest and most accurate patterns published. Styles far in advance of all others, and the only patterns which give the valuable Cutting and Construction Guide.

## Crockery Department

Our Holiday Goods are now on display and include elegant lines of Chinaware, Glassware, vases, Figures, Clocks, Silverware and Cut Glass. Also a full line of Tinware and Enamelled Ware, in fact, everything for the home, store or hotel.

### New Belts

We are showing a beautiful line of New Elastic Belts, with enamel and other fancy buckles, in black and colors, at—**60c, 75c, \$1.00, \$1.25 and \$1.50**

## Hardware Dept.

Our fall line of Stoves, Ranges, Heaters and Hot Blasts are now complete. Carpenters' tool sets of every description in endless variety. **BUILDERS' HARDWARE**

The hardware bill is a small part of the cost of a house compared to the entire cost—don't spoil good work with cheap hardware.

**Largest Stock—Newest Designs—Greatest Variety—Prompt Service**

## Beautiful Showing in Carpet Dept.

CONFERENCE VISITORS are invited to visit the most modern Carpet department in the west. Our method of exhibiting rugs, portiers, lace curtains, etc., will interest you.

Our fall lines are now complete and represent the newest designs and styles in Carpet size Rugs, Carpets, Draperies, Wall Paper, Domestic and Foreign Printed and In-laid Linoleum.

**THE FINEST CARPET FLOOR IN THE STATE—SEE IT**

