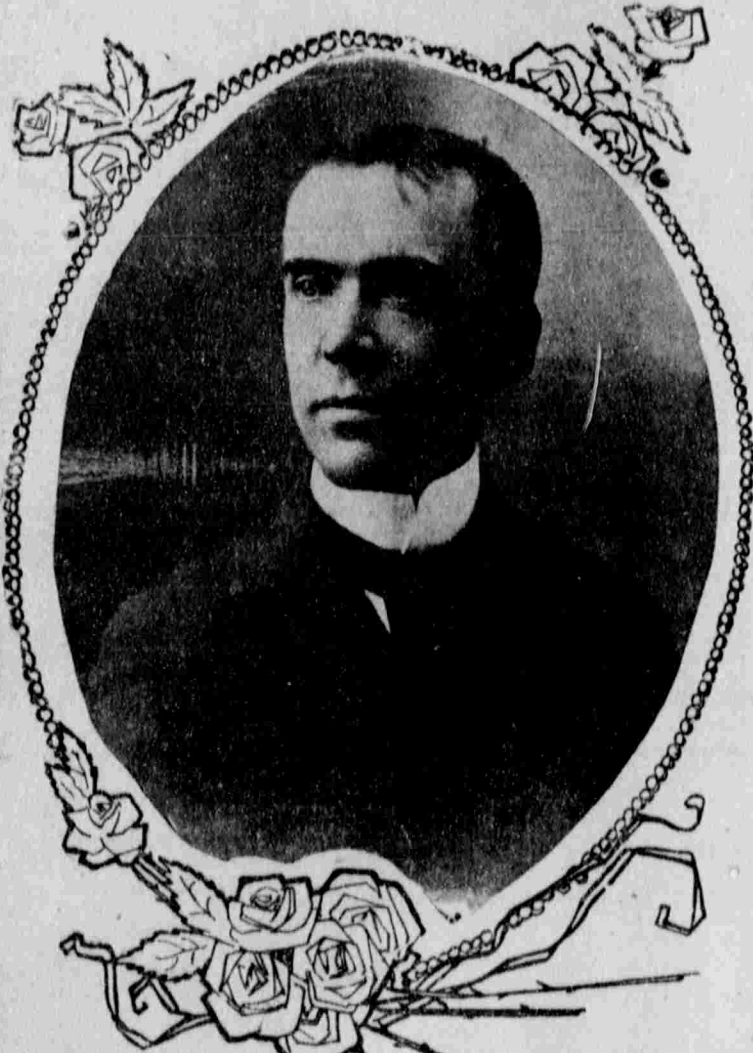


TRUSTIES WHO AVERTED GENERAL PRISON DELIVERY

Quartet of inmates of Penitentiary Who Were Instrumental in Saving Probable Bloodshed by Their Gallant Behavior—Their Cases Came Up Before the State Board of Pardons Today for Consideration.



ALEX. ROBERTSON.

Four inmates of the state prison were before the state board of pardons today, for pardon in return for gallant and meritorious services in preventing a general prison delivery on the evening of Friday, Oct. 9, when Lynch and Hawthorn escaped over the wall, only to be recaptured later, and Convict Frank Dayton was shot and killed in his attempt to get away.

These prisoners are Alexander A. Robertson, the well known Wells-Fargo former paying teller, who, with Assistant Cashier Harry T. Duke, was sentenced to four years in the state prison for embezzlement, by Judge Morse, July 22, 1902; J. C. Schuckers of this city, sentenced April 22, 1902, to four

years in the state prison for the crime of forgery; C. L. Maxwell, sentenced from Provo, Dec. 19, 1898, to 18 years in the state prison for robbery of the Springfield bank; John D. Douglas, sentenced from Ogden, May 23, 1898, for life, for murdering his wife in a drunken frenzy. The general belief has been that Robertson and Schuckers would be pardoned outright, and that the other two would either be pardoned or granted a material commutation of sentence. The petitioners have been able to file a long list of letters from officials and influential citizens recommending pardon on the ground of the value of the services they performed for the state, emphasized by their irreproachable conduct while within the prison walls.

The part taken by these petitioners in their sudden and entirely impromptu

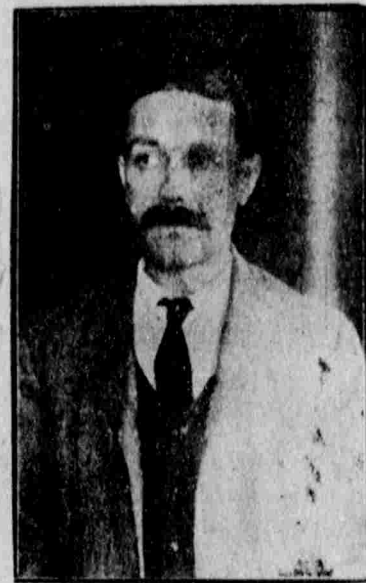
service of the state, is as follows: Robertson has been for some months prison librarian, performing also clerical duties, after extended service as a waiter in the mess room. He had studiously kept aloof from the body of convicts, as his surroundings in life previously had not been such as would make their companionship desirable. This exclusiveness, the other prisoners seemed to resent, and the prison physician found occasion to notify Robertson to be on his guard, as some of the convicts were proposing to "do him up" at the first opportunity. He was in charge of the keys of the south cell house just before the break, and had given them to Guard Jacobs. A few moments afterwards, according to his own statement, he heard scuffling, and the guard calling for help. He ran down stairs and seeing the situation hurried back to the cell house office and pushed the alarm button in and held it until Convict Frank Connors, a lifer who was in the scheme to escape, showed up and made a dash for Robertson. But the latter was too quick and running into the corridor hid in a cell. When Connors was gone Douglas appeared, and the two quickly shut up the other prisoners in their cells, though not without considerable risk to themselves. Then they hurried to Jacobs, who had been badly beaten, and extended to the man much needed care. In this they were assisted by Henry Maxwell, notwithstanding the latter was badly wounded. Douglas had previously been held up by Abe Majors, who shoved a gun under Douglas' nose and also threatened to cut his throat. Majors then forced Douglas into a cell from which he presently escaped, and aided Robertson.

Henry Maxwell was nearby when the attack was made on Guard Jacobs, and rushed to his assistance, but was cruelly beaten over the head by Majors with his gun, as Maxwell grappled with him, and was thrown into a cell. In the scuffling, Jacobs dropped his bunch of keys, and the assailants picking them up hurried to release their friends.

The part taken by Schuckers was now made manifest. While liberating the gang of murderers, the keys were dropped, and Schuckers who was on the spot watching for some opportunity in the service of law and order, quickly grabbed the keys and showed them into his pocket. This prevented any more cell opening. Schuckers was at once pounced on, and his life threatened if he did not give up the keys. But Schuckers was successful in making the toughs believe that he did not have the keys, and declared he had given them to Connors. Waddell asked Connors where they were, but Connors said he didn't know. At this moment the alarm was being given, and the desperate convicts found it inconvenient to investigate further, if they ever wanted to get away themselves. So they made a hurried exit. Schuckers produced the keys from the inner recesses of his jeans on being liberated from the cell. Schuckers has for some time been corresponding secretary of the prison society of Christian Endeavor, and has proven a trusted and tried friend to the cause. He has been largely the means of building up the society so that the attendance at the Sunday morning meetings has often amounted to half the prison population, and many a man has gone from that prison resolved to lead an upright life, through the influence of the Endeavor society. The society aims particularly to get hold of the younger men who may come to the prison, and show them that they are by no means lost, and that it is possible for them to turn right around, and fit themselves to become useful members of the community through the evangelical influences exerted by that society. Douglas is the vice president, and has proved an efficient and conscientious officer.



C. L. MAXWELL.



J. C. SCHUCKERS.

POWER OF THE SENATE.

The striking circumstance in connection with the power of the senate is that it holds the commanding place at the center of the government, and it brings to mind the condition of things in Europe under the feudal system, where the nobles held the position between the king and the people, and gradually encroached upon both until they were able to oppress both—a condition which continued until a union was effected between the people and the sovereign, and the feudal system finally overthrown. The senate exercises the powers of legislation with the house, and some of the most important executive functions with the president. The latter is unable to appoint a collector or a postmaster, or even a member of his own official household, without the senate's consent. Such important powers, exercised at the center of the state, would naturally grow by encroachment upon both executive and legislative powers, and become less—S. W. McCall, in the October Atlantic.

NOTHING SATISFIED.

The men do not notice any decrease in their millinery bills because of the practise the women have of going bareheaded.—New York Press.

FAITH AND FACT.

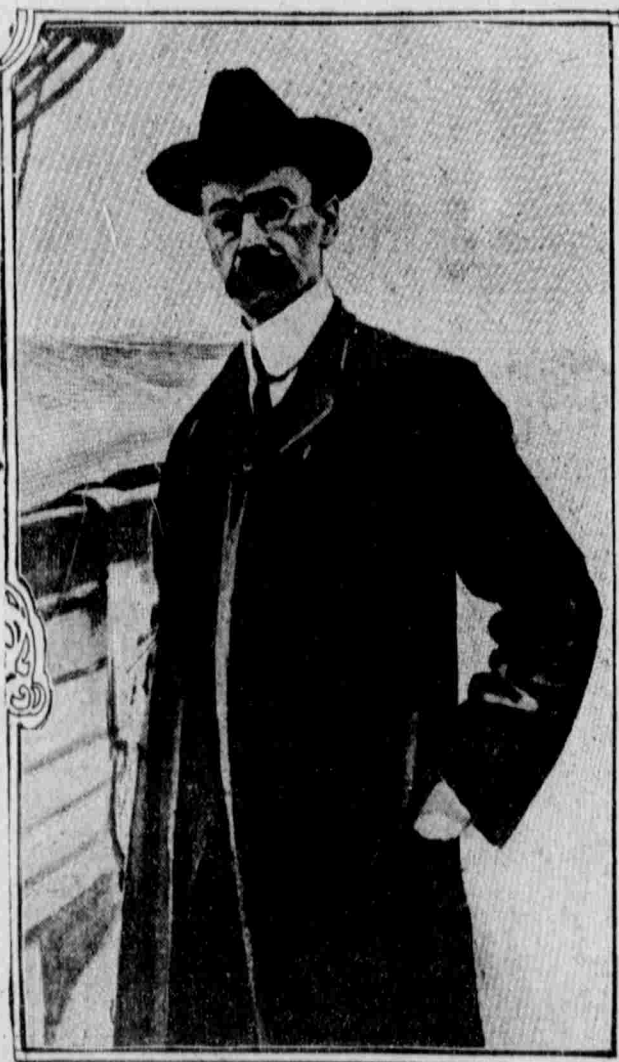
Faith is one thing and fact is another. It sometimes takes an amount of faith to produce one fact. Years of earnest work and faith have produced one fact about medicine that is deserving of mention here. If people who are troubled with general weakness through overwork, dissipation or exposure can get a remedy that will make rich red blood from the food they eat, their return to health is assured. Good blood is the life of the body as well as the nerves. Weak, sickly, pale people who suffer with indigestion, dyspepsia, headache, loss of strength and ambition, having dizzy spells and always tired, can be cured sound and well with Dr. Gunn's Blood and Nerve Tonic. Sold by druggists for 75c per box, or 3 boxes for \$2. This Tonic acts in a common sense way, curing disease by giving strength to resist it.

WHY SHE LEFT NEW YORK.

"I am going to leave New York for good and all, next week," said a well-known woman the other day. "There is no place for me here to live my life. I am not stout enough to stand against the stampede to the lee side of the deck. If I stay here I shall conform more, and feel that I must have more and more money to spend for new things. So I am going away to some isolated place where I can live with my books, and with my ideas, and with the

friendly trees. And I shall bring up my babies with a sense of the resources that may be inside of them. I don't like spring and vitality. Business and rich men's sports have eaten up his soul. He rushes about in his automobile, he rides his horse, he allows so much time to his yacht; he does his

LOST IN LABRADOR.



LEONIDAS HUBBARD JR.

Latest photograph of Leonidas T. Hubbard, who, in starting out to explore the coast of Labrador, is likely to have been drowned.

THANKSGIVING BARGAINS



Millinery.

Notwithstanding the heavy selling in this department the last week, our large force of trimmers is constantly busy and we will sell for one more week,

READY-TO-WEAR HATS AND PATTERN HATS

At ONE-HALF Our Regular Prices.

We can satisfy your wants fully in the

Millinery Department.

DOMESTICS.

Cloths you use and need every day at prices which will surprise you when you see quality of goods.

All Colored Corduroys, Half Price. Were \$1.00 per yard, now 50c

20 Per cent off on all French Flannels and Ladies Cloths

25 Per cent off on all Lunch Cloths, Center Pieces, Tray Cloths, Doylies, and Scarfs. A beautiful line to select from.

All Amoskeag Staple Gingham for Ladies and Children's aprons only 6 1-4c

Twill Shirtings regular price 12 1-2 now 10c

Fleeced Pemberton Shirtings, regular price 15 cents now 12 1-2c

Clarion Cheviots, regular price 12 1-2 cents, now 10c

All Canton Flannel will be sold at the following prices. 7 1-4 now 6 1-4, 8 1-3 7 1-4, 10 1-3 12 1-2 10, 15 12 1-2, 17 1-2 15, 20 17 1-2.

TABLE LINENS.

Beautiful linens make desirable cleanliness possible in your dining room. The tables shine with the beauty of the linens. Here are linens that show their quality. Thursday is Thanksgiving Day. Come early Monday morning and avoid the rush.

All Table Linens, Table Cloths, Table Sets and Napkins will be sold in this great sale at the following reduced prices:

TABLE LINENS.

Table Linens, 24c for 24c; 30c for 40c; 40c for 47 1/2c; 50c for 50c; 55c for 65c; 60c for 70c; 65c for 75c; 70c for 80c; 75c for 85c; 80c for 90c; 85c for 95c; 90c for 100c; 95c for 105c; 100c for 110c; 105c for 115c; 110c for 120c; 115c for 125c; 120c for 130c; 125c for 135c; 130c for 140c; 135c for 145c; 140c for 150c; 145c for 155c; 150c for 160c; 155c for 165c; 160c for 170c; 165c for 175c; 170c for 180c; 175c for 185c; 180c for 190c; 185c for 195c; 190c for 200c; 195c for 205c; 200c for 210c; 205c for 215c; 210c for 220c; 215c for 225c; 220c for 230c; 225c for 235c; 230c for 240c; 235c for 245c; 240c for 250c; 245c for 255c; 250c for 260c; 255c for 265c; 260c for 270c; 265c for 275c; 270c for 280c; 275c for 285c; 280c for 290c; 285c for 295c; 290c for 300c; 295c for 305c; 300c for 310c; 305c for 315c; 310c for 320c; 315c for 325c; 320c for 330c; 325c for 335c; 330c for 340c; 335c for 345c; 340c for 350c; 345c for 355c; 350c for 360c; 355c for 365c; 360c for 370c; 365c for 375c; 370c for 380c; 375c for 385c; 380c for 390c; 385c for 395c; 390c for 400c; 395c for 405c; 400c for 410c; 405c for 415c; 410c for 420c; 415c for 425c; 420c for 430c; 425c for 435c; 430c for 440c; 435c for 445c; 440c for 450c; 445c for 455c; 450c for 460c; 455c for 465c; 460c for 470c; 465c for 475c; 470c for 480c; 475c for 485c; 480c for 490c; 485c for 495c; 490c for 500c; 495c for 505c; 500c for 510c; 505c for 515c; 510c for 520c; 515c for 525c; 520c for 530c; 525c for 535c; 530c for 540c; 535c for 545c; 540c for 550c; 545c for 555c; 550c for 560c; 555c for 565c; 560c for 570c; 565c for 575c; 570c for 580c; 575c for 585c; 580c for 590c; 585c for 595c; 590c for 600c; 595c for 605c; 600c for 610c; 605c for 615c; 610c for 620c; 615c for 625c; 620c for 630c; 625c for 635c; 630c for 640c; 635c for 645c; 640c for 650c; 645c for 655c; 650c for 660c; 655c for 665c; 660c for 670c; 665c for 675c; 670c for 680c; 675c for 685c; 680c for 690c; 685c for 695c; 690c for 700c; 695c for 705c; 700c for 710c; 705c for 715c; 710c for 720c; 715c for 725c; 720c for 730c; 725c for 735c; 730c for 740c; 735c for 745c; 740c for 750c; 745c for 755c; 750c for 760c; 755c for 765c; 760c for 770c; 765c for 775c; 770c for 780c; 775c for 785c; 780c for 790c; 785c for 795c; 790c for 800c; 795c for 805c; 800c for 810c; 805c for 815c; 810c for 820c; 815c for 825c; 820c for 830c; 825c for 835c; 830c for 840c; 835c for 845c; 840c for 850c; 845c for 855c; 850c for 860c; 855c for 865c; 860c for 870c; 865c for 875c; 870c for 880c; 875c for 885c; 880c for 890c; 885c for 895c; 890c for 900c; 895c for 905c; 900c for 910c; 905c for 915c; 910c for 920c; 915c for 925c; 920c for 930c; 925c for 935c; 930c for 940c; 935c for 945c; 940c for 950c; 945c for 955c; 950c for 960c; 955c for 965c; 960c for 970c; 965c for 975c; 970c for 980c; 975c for 985c; 980c for 990c; 985c for 995c; 990c for 1000c; 995c for 1005c; 1000c for 1010c; 1005c for 1015c; 1010c for 1020c; 1015c for 1025c; 1020c for 1030c; 1025c for 1035c; 1030c for 1040c; 1035c for 1045c; 1040c for 1050c; 1045c for 1055c; 1050c for 1060c; 1055c for 1065c; 1060c for 1070c; 1065c for 1075c; 1070c for 1080c; 1075c for 1085c; 1080c for 1090c; 1085c for 1095c; 1090c for 1100c; 1095c for 1105c; 1100c for 1110c; 1105c for 1115c; 1110c for 1120c; 1115c for 1125c; 1120c for 1130c; 1125c for 1135c; 1130c for 1140c; 1135c for 1145c; 1140c for 1150c; 1145c for 1155c; 1150c for 1160c; 1155c for 1165c; 1160c for 1170c; 1165c for 1175c; 1170c for 1180c; 1175c for 1185c; 1180c for 1190c; 1185c for 1195c; 1190c for 1200c; 1195c for 1205c; 1200c for 1210c; 1205c for 1215c; 1210c for 1220c; 1215c for 1225c; 1220c for 1230c; 1225c for 1235c; 1230c for 1240c; 1235c for 1245c; 1240c for 1250c; 1245c for 1255c; 1250c for 1260c; 1255c for 1265c; 1260c for 1270c; 1265c for 1275c; 1270c for 1280c; 1275c for 1285c; 1280c for 1290c; 1285c for 1295c; 1290c for 1300c; 1295c for 1305c; 1300c for 1310c; 1305c for 1315c; 1310c for 1320c; 1315c for 1325c; 1320c for 1330c; 1325c for 1335c; 1330c for 1340c; 1335c for 1345c; 1340c for 1350c; 1345c for 1355c; 1350c for 1360c; 1355c for 1365c; 1360c for 1370c; 1365c for 1375c; 1370c for 1380c; 1375c for 1385c; 1380c for 1390c; 1385c for 1395c; 1390c for 1400c; 1395c for 1405c; 1400c for 1410c; 1405c for 1415c; 1410c for 1420c; 1415c for 1425c; 1420c for 1430c; 1425c for 1435c; 1430c for 1440c; 1435c for 1445c; 1440c for 1450c; 1445c for 1455c; 1450c for 1460c; 1455c for 1465c; 1460c for 1470c; 1465c for 1475c; 1470c for 1480c; 1475c for 1485c; 1480c for 1490c; 1485c for 1495c; 1490c for 1500c; 1495c for 1505c; 1500c for 1510c; 1505c for 1515c; 1510c for 1520c; 1515c for 1525c; 1520c for 1530c; 1525c for 1535c; 1530c for 1540c; 1535c for 1545c; 1540c for 1550c; 1545c for 1555c; 1550c for 1560c; 1555c for 1565c; 1560c for 1570c; 1565c for 1575c; 1570c for 1580c; 1575c for 1585c; 1580c for 1590c; 1585c for 1595c; 1590c for 1600c; 1595c for 1605c; 1600c for 1610c; 1605c for 1615c; 1610c for 1620c; 1615c for 1625c; 1620c for 1630c; 1625c for 1635c; 1630c for 1640c; 1635c for 1645c; 1640c for 1650c; 1645c for 1655c; 1650c for 1660c; 1655c for 1665c; 1660c for 1670c; 1665c for 1675c; 1670c for 1680c; 1675c for 1685c; 1680c for 1690c; 1685c for 1695c; 1690c for 1700c; 1695c for 1705c; 1700c for 1710c; 1705c for 1715c; 1710c for 1720c; 1715c for 1725c; 1720c for 1730c; 1725c for 1735c; 1730c for 1740c; 1735c for 1745c; 1740c for 1750c; 1745c for 1755c; 1750c for 1760c; 1755c for 1765c; 1760c for 1770c; 1765c for 1775c; 1770c for 1780c; 1775c for 1785c; 1780c for 1790c; 1785c for 1795c; 1790c for 1800c; 1795c for 1805c; 1800c for 1810c; 1805c for 1815c; 1810c for 1820c; 1815c for 1825c; 1820c for 1830c; 1825c for 1835c; 1830c for 1840c; 1835c for 1845c; 1840c for 1850c; 1845c for 1855c; 1850c for 1860c; 1855c for 1865c; 1860c for 1870c; 1865c for 1875c; 1870c for 1880c; 1875c for 1885c; 1880c for 1890c; 1885c for 1895c; 1890c for 1900c; 1895c for 1905c; 1900c for 1910c; 1905c for 1915c; 1910c for 1920c; 1915c for 1925c; 1920c for 1930c; 1925c for 1935c; 1930c for 1940c; 1935c for 1945c; 1940c for 1950c; 1945c for 1955c; 1950c for 1960c; 1955c for 1965c; 1960c for 1970c; 1965c for 1975c; 1970c for 1980c; 1975c for 1985c; 1980c for 1990c; 1985c for 1995c; 1990c for 2000c; 1995c for 2005c; 2000c for 2010c; 2005c for 2015c; 2010c for 2020c; 2015c for 2025c; 2020c for 2030c; 2025c for 2035c; 2030c for 2040c; 2035c for 2045c; 2040c for 2050c; 2045c for 2055c; 2050c for 2060c; 2055c for 2065c; 2060c for 2070c; 2065c for 2075c; 2070c for 2080c; 2075c for 2085c; 2080c for 2090c; 2085c for 2095c; 2090c for 2100c; 2095c for 2105c; 2100c for 2110c; 2105c for 2115c; 2110c for 2120c; 2115c for 2125c; 2120c for 2130c; 2125c for 2135c; 2130c for 2140c; 2135c for 2145c; 2140c for 2150c; 2145c for 2155c; 2150c for 2160c; 2155c for 2165c; 2160c for 2170c; 2165c for 2175c; 2170c for 2180c; 2175c for 2185c; 2180c for 2190c; 2185c for 2195c; 2190c for 2200c; 2195c for 2205c; 2200c for 2210c; 2205c for 2215c; 2210c for 2220c; 2215c for 2225c; 2220c for 2230c; 2225c for 2235c; 2230c for 2240c; 2235c for 2245c; 2240c for 2250c; 2245c for 2255c; 2250c for 2260c; 2255c for 2265c; 2260c for 2270c; 2265c for 2275c; 2270c for 2280c; 2275c for 2285c; 2280c for 2290c; 2285c for 2295c; 2290c for 2300c; 2295c for 2305c; 2300c for 2310c; 2305c for 2315c; 2310c for 2320c; 2315c for 2325c; 2320c for 2330c; 2325c for 2335c; 2330c for 2340c; 2335c for 2345c; 2340c for 2350c; 2345c for 2355c; 2350c for 2360c; 2355c for 2365c; 2360c for 2370c; 2365c for 2375c; 2370c for 2380c; 2375c for 2385c; 2380c for 2390c; 2385c for 2395c; 2390c for 2400c; 2395c for 2405c; 2400c for 2410c; 2405c for 2415c; 2410c for 2420c; 2415c for 2425c; 2420c for 2430c; 2425c for 2435c; 2430c for 2440c; 2435c for 2445c; 2440c for 2450c; 2445c for 2455c; 2450c for 2460c; 2455c for 2465c; 2460c for 2470c; 2465c for 2475c; 2470c for 2480c; 2475c for 2485c; 2480c for 2490c; 2485c for 2495c; 2490c for 2500c; 2495c for 2505c; 2500c for 2510c; 2505c for 2515c; 2510c for 2520c; 2515c for 2525c; 2520c for 2530c; 2525c for 2535c; 2530c for 2540c; 2535c for 2545c; 2540c for 2550c; 2545c for 2555c; 2550c for 2560c; 2555c for 2565c; 2560c for 2570c; 2565c for 2575c; 2570c for 2580c; 2575c for 2585c; 2580c for 2590c; 2585c for 2595c; 2590c for 2600c; 2595c for 2605c; 2600c for 2610c; 2605c for 2615c; 2610c for 2620c; 2615c for 2625c; 2620c for 2630c; 2625c for 2635c; 2630c for 2640c; 2635c for 2645c; 2640c for 2650c; 2645c for 2655c; 2650c for 2660c; 2655c for 2665c; 2660c for 2670c; 2665c for 2675c; 2670c for 2680c; 2675c for 2685c; 2680c for 2690c; 2685c for 2695c; 2690c for 2700c; 2695c for 2705c; 2700c for 2710c; 2705c for 2715c; 2710c for 2720c; 2715c for 2725c; 2720c for 2730c; 2725c for 2735c; 2730c for 2740c; 2735c for 2745c; 2740c for 2750c; 2745c for 2755c; 2750c for 2760c; 2755c for 2765c; 2760c for 2770c; 2765c for 2775c; 2770c for 2780c; 2775c for 2785c; 2780c for 2790c; 2785c for 2795c; 2790c for 2800c; 2795c for 2805c; 2800c for 2810c; 2805c for 2815c; 2810c for 2820c; 2815c for 2825c; 2820c for 2830c; 2825c for 2835c; 2830c for 2840c; 2835c for 2845c; 2840c for 2850c; 2845c for 2855c; 2850c for 2860c; 2855c for 2865c; 2860c for 2870c; 2865c for 2875c; 2870c for 2880c; 2875c for 2885c; 2880c for 2890c; 2885c for 2895c; 2890c for 2900c; 2895c for 2905c; 2900c for 2910c; 2905c for 2915c; 2910c for 2920c; 2915c for 2925c; 2920c for 2930c; 2925c for 2935c; 2930c for 2940c; 2935c for 2945c; 2940c for 2950c; 2945c for 2955c; 2950c for 2960c; 2955c for 2965c; 2960c for 2970c; 2965c for 2975c; 2970c for 2980c; 2975c for 2985c; 2980c for 2990c; 2985c for 2995c; 2990c for 3000c; 2995c for 3005c; 3000c for 3010c; 3005c for 3015c; 3010c for 3020c; 3015c for 3025c; 3020c for 3030c; 3025c for 3035c; 3030c for 3040c; 3035c for 3045c; 3040c for 3050c; 3045c for 3055c; 3050c for 3060c; 3055