

## THE FAMOUS BULLION-BECK MINE.

Some New Bodies of Rich Ore Found in Virgin Territory During the Year.



It has been the policy of the management of the Bullion-Beck & Champion Mining company, during the past year, to devote special attention to the development of new ground in that famous Tintic producer. In this work very satisfactory results have been accomplished, so the year closes with the outlook for the future very bright.

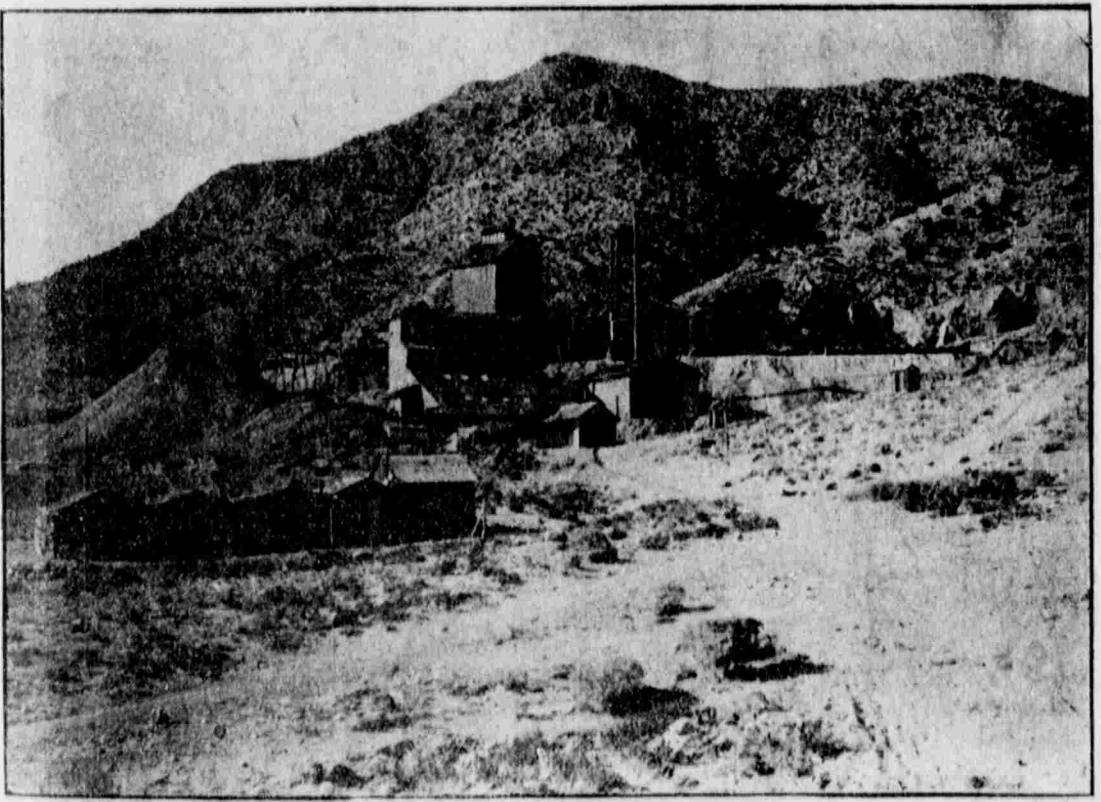
Some quite extensive bodies of high and low grade ores have been developed. The company has issued a great many leases since January 1st last, but the work done by these miners has been confined entirely to the old workings of the property out of which the dividends of the past were obtained. The lessees have all made good money after paying royalty to the company. No leasing has been done in the newly developed territory. It is the intention of the company to pursue the present policy of development during the coming year.

It is also planned to erect a mill early in the year for the treatment of the old tailings dumps and to reduce the low grade ores of the mine, of which there are great tonnages. A process has been found, which, if further experiments with it prove to be as satisfactory as those in the past have been, the problem of the low grade ore question of the camp will be solved completely.

The Bullion-Beck mines are splendidly equipped and Philo T. Farnsworth of Salt Lake is the general manager. The property has paid dividends in the past of \$2,700,000.

## The Historic Horn Silver Mine at Frisco.

Physical Conditions Greatly Improved at This Old Fortune Producer.



The campaign of development carried on at the properties of the Horn Silver Mining company at Frisco, Beaver county, Utah, during the present year have been most important and it is pleasing to note that physical conditions are much more gratifying than they have been for a long time in the past. It has been the policy of Manager Philo T. Farnsworth to prepare the mine for the payment of more dividends and, with that purpose in view, a very vigorous campaign of prospecting has been carried on in virgin territory with the result that, some very large bodies of milling ores have been developed as well as some extensive bodies of a much higher grade.

It is the intention to continue to pursue this course and to keep development hereafter anywhere from one to two years ahead of extraction. The investigations made on the well known copper vein of the property particularly, have been of a startling nature, the values running from 25 to 30 per cent for a width of from two to eight feet.

The production of the Horn Silver mine during the past year amounted to 12,762,531 pounds of crude and copper ore, which netted \$91,684.86. The concentrates produced and sold aggregated 4,146,850 pounds, from which was realized net \$32,195.76, making the net earnings, after deducting transportation and smelting charges, \$123,780.64, the month of December estimated.

The zinc ores are certain to be a source of a great deal of revenue in the future and arrangements are now being perfected for the placing of this product upon the market; in fact, negotiations are practically closed for the sale of a large tonnage at a very satisfactory profit. It is estimated that there are from 200,000 to 400,000 tons of zinc ore available that carry values in that metal anywhere from 36 to 45 per cent.

The Horn Silver mine was discovered in the early '70's and during that time it has paid out in dividends \$5,342,660. For a number of years it was the only mine of consequence operated in Beaver county and it was because of its discovery and later development that the present lines of the San Pedro, Los Angeles & Salt Lake railway was built south from Salt Lake City. Mr. Farnsworth has managed the Horn Silver for the past 15 years.

## ORE AND BULLION SETTLEMENTS \$22,591,322.

According to the reports of McCornick & Co. of the output of ore and bullion, compiled for the year, the settlements aggregate \$22,591,322, as against \$20,073,616 in 1902. While these figures give some idea of the metal output of the state they cannot be relied upon as representing the actual figures for the reason that there is no way of accounting for the ores and bullion shipped to a market outside the state. Last year there was a discrepancy of about \$7,000,000 between the local report and those issued by the government. The settlements by months this year were:

January	\$ 2,635,810
February	2,659,500
March	2,754,479
April	1,341,221
May	1,561,200
June	1,694,510
July	1,829,250
August	1,771,550
September	1,905,212
October	2,050,395
November	1,967,095
December	2,000,000
<b>Total</b>	<b>\$22,591,322</b>

Estimated.

## SALT LAKE SAMPLING WORKS HANDLED OVER 140,000 TONS IN 1903.

The sampling mills of Salt Lake will have handled by Dec. 31 approximately 140,228 tons, since Jan. 1 last, not including the business done in the early part of the year by the Conklin plant, which has retired from the field.

The Pioneer sampler at Sandy was rebuilt during the year, equipped with the latest modern machinery and in September last began to bid for business, since which time it has been growing constantly in favor and has handled, with the present month estimated, 12,598 tons as follows: September, 3,692.35 tons; October, 1,773.22 tons; November, 4,632.4 tons; December, 4,000.

The Taylor & Brunton works crushed 137,429.79 tons, as follows: January, 8,288.11; February, 7,698.15; March, 8,204.73; April, 8,324.73; May, 12,928.95; June, 12,383.19; July, 13,143.14; August, 12,581.08; September, 11,220.1; October, 10,216.24; November, 10,523.75; December, 11,000.

## THE PUBLIC LANDS OF THIS STATE; SURVEYOR GENERAL ANDERSON MAKES REPORT.

### THE OFFICE STAFF AND WORK.

The office staff, as now composed, is: Edward H. Anderson, surveyor general; William S. Hodges, chief clerk; H. R. M. Atkinson, chief of agricultural division; Allison G. Andrews, chief of mineral division; Leopold L. Soderberg, James L. Peck, Kate F. Burton, Mary Wightman, Eugene T. Hills, Joseph Hirschvogel, Jos. L. Stephenson, William C. Jennings, David H. Blossom, Howard H. Shelgrove, Esmeralda Lasher, Susie Hull, Zelma Brown, and Grace Nelson.

It is the aim of the office to please and accommodate the great mining and agricultural public, and to execute all work in its care as well and expeditiously as possible. That this aim is reached is generally conceded by all who have business with the office.

Several new commissions have been issued during the year to deputy mineral surveyors, of whom there are now 73, an increase of 7 over 1902.

### MINERAL SURVEY ORDERS.

Orders for mineral surveys issued during the year 1903, giving the number of lode, placer and mill site locations:

Districts.	Lodes.		Placers.		Mill Sites.	
	Surveyors.	Locations.	Surveyors.	Locations.	Surveyors.	Locations.
American Fork	1	1				
Argenta	1	1				
Albion	1	44				
Beaver Lake	4	9				
Blue Lodge	11	45				
Clifton	4	10				
Dugway	6	24				
Fish Springs	3	2				
Gold Mountain	5	27				
Hot Springs	6	6				
Iron Springs	1	44				
Little Cottonwood	1	45				
Mt. Baldy	1	10				
Mt. Nebo	1	6				
North Star	1	5				
North Tintic	1	5				
Ohio	1	1				
Ophir	9	17				
Paradise	5	5				
Pinto Iron	4	19				
Rush Valley	4	12				
San Francisco	12	21				
Snake Creek	1	6				
State Line	1	1				
Spring Creek	1	1				
Silver Lake	1	1				
Star	2	4				
Tintic	8	15				
Utah	17	25				
West Mountain	35	45				
Unorganized	13	24				
<b>Total</b>	<b>186</b>	<b>541</b>	<b>5</b>	<b>5</b>	<b>1</b>	<b>3</b>

### MINERAL SURVEYS APPROVED.

Mineral surveys approved during the year 1903, giving the number of lode, placer and mill site locations:

Districts.	Lodes.		Placers.		Mill Sites.		Amenities and Additional Field Notes.		Certificates of \$500 Expenditure.	
	Surveyors.	Locations.	Surveyors.	Locations.	Surveyors.	Locations.	Surveyors.	Locations.	Surveyors.	Locations.
American Fork	1	1								
Beaver Lake	4	9								
Blue Lodge	15	53								
Box Elder	1	2								
Clifton	4	20								
Dugway	6	23								
Gold Mountain	2	5								
Hot Springs	6	9								
Iron Springs	1	44								
Little Cottonwood	10	41								
Mt. Baldy	1	10								
Mt. Nebo	1	6								
North Star	1	5								
Ohio	1	1								
Ophir	9	17								
Paradise	5	5								
Pinto Iron	4	19								
Rush Valley	4	12								
San Francisco	12	21								
Snake Creek	1	6								
State Line	1	1								
Spring Creek	1	1								
Silver Lake	1	1								
Star	2	4								
Tintic	8	15								
Utah	17	25								
West Mountain	35	45								
Unorganized	13	24								
<b>Total</b>	<b>186</b>	<b>541</b>	<b>5</b>	<b>5</b>	<b>1</b>	<b>3</b>	<b>25</b>	<b>39</b>	<b>84</b>	<b>158</b>

\*Unorganized.

### AGRICULTURAL DEPARTMENT.

In the agricultural department for the year 1903, there were nine contracts for agricultural surveys approved, covering an area of 32,335.49 acres, in 14 counties, at a cost of \$12,235.65. In addition to the usual work of the department, including the letting of contracts for the survey of public lands from the regular appropriation by Congress, deposits by individuals, and repayments made by the railroad, 18 contracts have been awarded for the survey of the Utah Indian reservation, involving a total liability of \$91,256,

payable from the Indian appropriation of March 5, 1903.

On April 2, 1903, the office received instructions to prepare and submit forms of advertisement, inviting proposals for the execution of the proposed surveys; also to submit notices to be issued, posted, and mailed, inviting proposals. These were transmitted to the department on April 3, on April 31 authority for advertising in accordance with the notices sent to the department on April 3, as amended by it for the survey of the reservation was received; and on June 1 (the 20 days of posting having elapsed) the bids were opened. June 25 the bids, together with tabulated sheets showing the segregation of the bids, and

a diagram showing the proposed grouping and location of the contracts, were forwarded to the department for approval; and on July 29 authority to award the contracts as recommended was received.

The contracts and special instructions were written up as speedily as possible and transmitted to the department for approval, as soon as the deputies had executed the required bonds.

The first contract was dated July 29, and the last Aug. 16.

DEPUTIES BEGIN WORK.

Upon receipt of the approval of the contracts by the department, the first of which reached the office Aug. 19, the deputies, as soon as they could organize their parties, proceeded to the field and worked with the greatest expedition commensurate with good and accurate work, until driven in by the heavy snows which fell quite early in the mountainous portions, and remain until June.

The deputies having contracts in the northern portion have, with two exceptions, nearly completed their work, had they been able to have taken the field three weeks earlier than they did, they would, undoubtedly, have finished their contracts this fall.

The deputies in the central and southern portions of the reservation will probably be able to return to the field by the end of April, or the first of May.

Three deputies have completed their contracts.

The contracts were awarded to the following deputies:

Deputies.	Amount.
Arthur H. Brown and Fred M. Brown (survey of boundary)	\$ 4,205.00
James H. Marlinton	1,432.00
Harvey D. Heist	5,913.00
A. J. Stewart, Jr., and A. L.	

Total \$14,250.00

TOTAL ACRES SURVEYED.

The total number of acres surveyed and approved by the surveyor general up to Dec. 31, 1903, is 19,571,881.32.

During the year 1903 surveys have been approved covering an area of 732,358.49 acres, located as follows:

Counties.	Acres.
Beaver	2,415.60
Box Elder	1,501.40
CACHE	6,095.41
Grand	165,979.53
Juab	52,996.01
Plute	20,715.49
Rich	15,757.88
Salt Lake	23,877.81
Sanpete	68,637.89
Summit	5,137.88
Tooele	59,029.67
Utah	230,121.45
Wasatch	1,600.00
Wasatch	41,243.16
<b>Total</b>	<b>732,358.49</b>

Preferred by Connoisseurs for its high quality and delicious natural flavor.

**Best & Goes Farthest**

**FINE PERFUMES FOR CHRISTMAS**

Are as appropriate as anything you can find. We have some put up in special cut glass bottles which are most suitable for the season. Toilet waters too are put up in the same way.

**Schramm's** Where the Cars Stop.

**HOLIDAY EXCURSIONS**

Enjoy yourselves during the Christmas Holidays and make a visit with the old folks at home. The San Pedro, Los Angeles & Salt Lake R. R. make this possible by selling tickets to all points on their line at ONE FARE FOR THE ROUND TRIP. Tickets on sale December 24th, 25th and 31st, also January 1st. Limit returning January 4th, 1904.

For further information see Agents Salt Lake Route or address J. L. Moore, Commercial Agent, Salt Lake City.

**UNION PACIFIC**

**Three Trains Daily**

TO OMAHA KANSAS CITY TO CHICAGO ST. LOUIS

and all Principal Eastern Points

Many hours quicker than any other line

No Change of Cars, "THE OVERLAND ROUTE" all the way.

Electric-Lighted Trains running every day.

Full information furnished on application to City Ticket Office 201 Main Street, Salt Lake City.

**TAB HURST** in **Cluett BRAND**

QUARTER SIZES QUARTER EACH CLUETT, PEABODY & CO. Makers of Cluett and Moschis Shirts

**It's a Changed World**

To people afflicted with failing eyesight, when properly fitted with scientifically ground glasses, such as we are able to produce at our new factory. Don't delay taking advantage of our free examination. Oculists prescriptions filled.

**UTAH OPTICAL CO.,**  
J. H. Knickerbocker, O. D.  
Royal W. Daines, O. D.  
237 MAIN.

## ENORMOUS YIELD OF THE BRONZE METAL THIS YEAR.

In the year 1902 the mines of Utah produced 25,554,026 pounds of refined copper. The present year will close with a decided increase over last and figures compiled yesterday give the output of six Utah smelting plants at \$7,449,204 pounds of refined copper, bullion and matte. A small portion of this production has come from other states; but when the segregation is made it will be found that the increase will amount to probably 7,000,000 pounds. This is a marvellous change and Bingham, Park City and Beaver county have been the largest contributors.

The Utah Consolidated produced approximately 13,350,000 pounds, the Bingham Consolidated 8,617,684, the M-Jette 370,000 pounds of matte, while the balance came from the furnaces of the American Smelting and Refining company, the United States and Utah & Eastern plants. The production of silver has increased over 2,000,000 ounces and that of gold and lead have done likewise.