

## ARE DRIVEN FROM FRANCE

Cordial Making Monks Deserting La Grande Chartreuse.

Grenoble Laments the Loss of the Great Liqueur Making Plant and the Charities of Its Proprietors.

Special Correspondence.

Grenoble, France, June 5.—The excitement in France over the suppression of the Roman Catholic religious orders under the associations law, the pet measure of Premier Combes, which threatened at one time to overthrow the ministry and which has resulted in riots in many sections of the country, is particularly apparent here and in the surrounding region of Dauphine.

It was at first supposed that the monks of La Grande Chartreuse would escape expulsion because of the benefits accruing to the country from their presence, but M. Combes, the "unfrocked," as the French Catholics call him owing to his having once been a priest, was inexorable. The Carthusian monks, with their immense liquor business, employing hosts of peasants and paying an annual tax to the government of over \$400,000, are lost to France and to Dauphine. Catholics have predicted that their expulsion will have in this province an effect like that which almost ruined France industrially when Louis XIV drove the Huguenots from his realm.

The monks' immense charities, too, will be badly missed. It is said that they have every year given away the greater part of their vast revenues. They have built a free hospital at St. Laurent du Pont and have established

# Ayer's Cherry Pectoral

Consumption can certainly be cured. Not all cases, but very many. Ayer's Cherry Pectoral is the principal medicine. The oldest doctor knows from experience. The youngest, just from college, knows from theory. Both uphold us.

25c, 50c, \$1.00. J. C. AYER CO., Lowell, Mass.

an asylum for deaf mutes near the monastery, besides innumerable less conspicuous acts of benevolence.

Most of the monks have already gone to the home which they are establishing in Austria, in which Catholic country they hope to escape the persecution, as they consider it, which they have met with here. They have taken with them their library, one of the largest and most valuable in Europe, their chronicles, their treasures and the appliances for making their precious liquor. Only a few devoted brethren remain in the bleak monastery high up in the mountains above the winding Isere, where since 1085 Carthusian monks have lived, prayed and died.

Almost a thousand years ago an ecclesiastical quarrel with the archbishop of Reims sent six earnest souls, with St. Bruno at their head, into the wilderness to seek a lonely spot where, untroubled by the sin and ambition of the great world, they could commune with God and nature.

Before they started they went to the

bishop of Grenoble, a holy man, who blessed them and showed them the way to the heights where they took up their abode and founded an order which has for centuries been one of the best known in Christendom. From that time the Carthusians have multiplied. From seven they have become thousands and from being poor they have grown rich and powerful.

The name of the monks of Chartreuse is associated in the minds of the profane with the cordial which bears it, but at the outset their purpose was not that of gain. They lived lives of the greatest austerity, their followers of St. Bruno, and set an example of rigorous piety to the most devout. Even now their rules are very severe. Their prayers and rites are of interminable length. Their food is coarse, their recreations are few, and they cleave to the seclusion of the forest. The monks have been offered fabulous sums for the recipe of the liquor, which is sacredly guarded by the limited number of the most active monks, who alone know it. The trademarks are the possession of the few, the present prior, who has authority to prosecute any one imitating them. The selling of the cordial is let out to a private company.

The existing buildings are not those erected by St. Bruno's hand. Six monasteries have been destroyed—four by fire, one by avalanche and one by soldiers during the religious wars of the sixteenth century.

No outsider is permitted to remain more than 48 hours within the walls, and women are religiously excluded at all times. Queen Victoria is said to have been the only woman who has ever penetrated the holy precincts.

## PRESIDENT ROOSEVELT AT OYSTER BAY.



After his record breaking tour which was altogether too strenuous to afford him much rest, President Roosevelt will seek quiet and peace in his beautiful summer home at Oyster Bay, N. Y. Here he will pass some of the hot summer months in the quiet seclusion of the peaceful village and the society of his wife and children.

## STOPPED A RUNAWAY.

Not every dog knows enough to stop a runaway, but there is at least one canine in Portland equal to the occasion.

While the driver of a bakery wagon was in a building on Fifth street this morning, the horse concluded that the stable was a more congenial place than the cold stone blocks. The driver wasn't present to argue the point with the horse, so the motion to adjourn was unanimously carried. The horse started to walk, but soon warmed up into a

trot, and was on the verge of running when the dog came to the rescue. From Fifth street the horse swung into Washington, and as the crowds surging past saw the driverless rig, with steam accelerating every moment, there was a chorus of "Whoa!"

Snoozing on the seat lay a large white dog of the Alaskan species. The shouting aroused him, and, sitting upright, he took in the situation at a glance. The dog reached for the lines with his teeth and pulled back on the reins until the trotting horse came to a standstill and the driver, who was running, arrived. Three times did the driver pat the dog on the head in commendation.

And the dog wagged his tail.—Portland Telegram.

## THE OLANUS FAMILY.

Joseph O'Brien is an Irishman who has traveled all over the world, served in the royal navy, and knows everybody. You can never mention a man or a fact, of anything else, but Joe knows it.

One evening I was sitting in a "decent public" with some friends, discussing the recent events.

I closed my remarks with a quotation from "Coriolanus," and just then

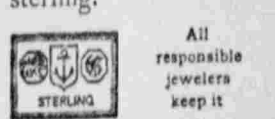
"The new in art is always formed out of the old."

—Emerson

Thus, though always novel,

## Gorham Silver

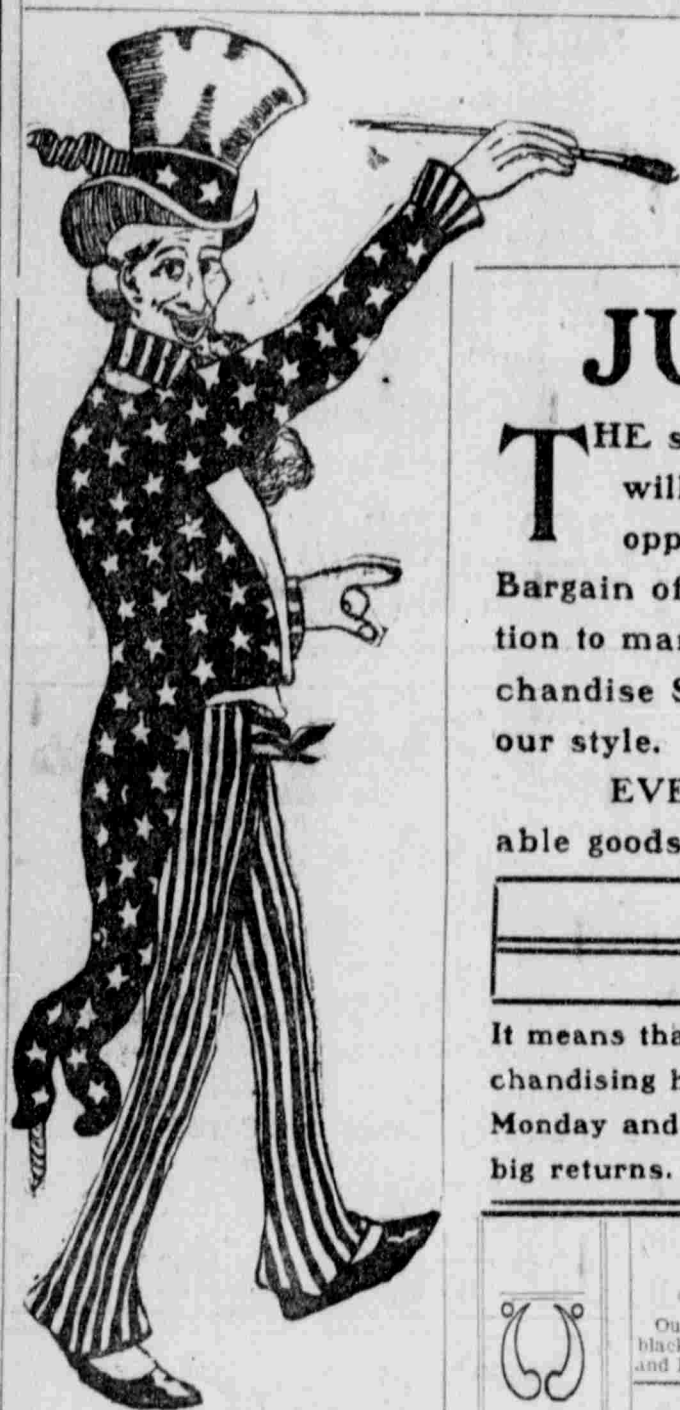
borrow from the best work of the old masters of the silversmiths' craft. It unites modern methods to the consummate craftsmanship of the middle ages. Its quality is as sound as its fashioning is perfect. It is always sterling.



All responsible jewelers keep it.

Joe walked in and happened to hear it. "Who said that?" said Joe. "Oh, Coriolanus. Of course you know him." "No, I never knew him, but I knew his people. A fine old Roseconna family, the O'lanus. I knew all his brothers, but I never knew Corry."—Philadelphia Ledger.

The new Irrigation Law, in pamphlet form, only 10c at the Deseret News Book Store.



# GET READY! GET READY!

FOR

## JULY 4th. We Can and Will Help You.

THE summer months will quickly pass and almost before we are aware of it, our heavy shipment of Autumn Goods will be arriving and will require shelf room. So we have decided to give the people of Salt Lake City a great opportunity to purchase seasonable goods at prices never before heard of in this city. Please don't compare this Bargain offering with the many "monstrous sales" which are almost daily announced. We have not the time or inclination to mark the prices of our goods double what they should be and then announce a "Great Trade Sensation"—a "Merchandise Stampede"—"Everything Slaughtered," and offer the goods at half price (half of the "doubled" price.) It isn't our style.

EVERY DAY you can secure merchandise of reliable quality in all our departments at as low prices as dependable goods should be sold for. When we announce a special selling event such as this

## Mammoth June Clearance Sale.

It means that you can buy the goods named, at the discounts named, FROM OUR REGULAR PRICES. Our 35 years' experience in merchandising has proven this to our regular patrons: those who have not made our acquaintance may prove it to their entire satisfaction next Monday and week. If you don't need these goods until next summer, buy some anyway. There is no investment which will bring such big returns.

### Silk Coats Half Price.

Our entire line of Silk Coats in black Taffetas and Peau de Soie and Pongees—HALF PRICE.



### Tailor-Made Suits One-Third Off.

(Remember this: A third off from regular retail prices is equal to and often better than a half off from raised retail prices.)

Our entire stock of Tailor-Made Suits, this season's choicest creations will be placed on sale at one-third less than the regular prices—giving now a...

\$9.00 Suit for \$6.00  
\$12.00 Suit for \$8.00  
\$15.00 Suit for \$10.00  
\$18.00 Suit for \$12.00  
\$21.00 Suit for \$14.00  
\$24.00 Suit for \$16.00  
\$27.00 Suit for \$18.00  
\$30.00 Suit for \$20.00  
\$33.00 Suit for \$22.00  
\$36.00 Suit for \$24.00  
\$39.00 Suit for \$26.00  
\$42.00 Suit for \$28.00  
\$45.00 Suit for \$30.00  
\$48.00 Suit for \$32.00  
\$51.00 Suit for \$34.00  
\$54.00 Suit for \$36.00  
\$57.00 Suit for \$38.00  
\$60.00 Suit for \$40.00

Real Antelope Laces at Half Price, our entire stock on sale this week at 50c on the dollar.

PURSES.—All Combination Purses and Card Cases at half price for this sale.

### Notion Dept.

RIBBONS.—Table of Fancy and Plain Taffeta Ribbons, sold regular for 25c to 75c per yard, 25c on sale this week for...

LACES.—Our entire stock of Medallion Laces in Cream and Ecru, ranging in price from 25c to \$5.00 per yard, will be sold on sale at half price—50c on the dollar.

Real Antelope Laces at Half Price, our entire stock on sale this week at 50c on the dollar.

PURSES.—All Combination Purses and Card Cases at half price for this sale.

Real Antelope Laces at Half Price, our entire stock on sale this week at 50c on the dollar.

PURSES.—All Combination Purses and Card Cases at half price for this sale.

Real Antelope Laces at Half Price, our entire stock on sale this week at 50c on the dollar.

PURSES.—All Combination Purses and Card Cases at half price for this sale.

Real Antelope Laces at Half Price, our entire stock on sale this week at 50c on the dollar.

PURSES.—All Combination Purses and Card Cases at half price for this sale.

Real Antelope Laces at Half Price, our entire stock on sale this week at 50c on the dollar.

PURSES.—All Combination Purses and Card Cases at half price for this sale.

Real Antelope Laces at Half Price, our entire stock on sale this week at 50c on the dollar.

PURSES.—All Combination Purses and Card Cases at half price for this sale.

Real Antelope Laces at Half Price, our entire stock on sale this week at 50c on the dollar.

PURSES.—All Combination Purses and Card Cases at half price for this sale.

Real Antelope Laces at Half Price, our entire stock on sale this week at 50c on the dollar.

PURSES.—All Combination Purses and Card Cases at half price for this sale.

Real Antelope Laces at Half Price, our entire stock on sale this week at 50c on the dollar.

PURSES.—All Combination Purses and Card Cases at half price for this sale.

Real Antelope Laces at Half Price, our entire stock on sale this week at 50c on the dollar.

PURSES.—All Combination Purses and Card Cases at half price for this sale.

Real Antelope Laces at Half Price, our entire stock on sale this week at 50c on the dollar.

PURSES.—All Combination Purses and Card Cases at half price for this sale.

Real Antelope Laces at Half Price, our entire stock on sale this week at 50c on the dollar.

PURSES.—All Combination Purses and Card Cases at half price for this sale.

Real Antelope Laces at Half Price, our entire stock on sale this week at 50c on the dollar.

PURSES.—All Combination Purses and Card Cases at half price for this sale.

Real Antelope Laces at Half Price, our entire stock on sale this week at 50c on the dollar.

PURSES.—All Combination Purses and Card Cases at half price for this sale.

Real Antelope Laces at Half Price, our entire stock on sale this week at 50c on the dollar.

PURSES.—All Combination Purses and Card Cases at half price for this sale.

Real Antelope Laces at Half Price, our entire stock on sale this week at 50c on the dollar.

### Handkerchiefs—Ladies' Initial H. S. Linen Handkerchiefs, special for this week only, each 10c

GLOVES.—Ladies' Washable Kid Gloves can be washed in soap and water and still retain their flexibility, only per \$1.50 pair

DAMASK DEPARTMENT.—Table Linens and Napkins, Damask Cloth Sets.

Special Price will be given this line of Goods, during this week's sale.

REMNANT TABLE.—All cotton and wool Remnants at half price or 50c on the dollar.

Real Antelope Laces at Half Price, our entire stock on sale this week at 50c on the dollar.

PURSES.—All Combination Purses and Card Cases at half price for this sale.

Real Antelope Laces at Half Price, our entire stock on sale this week at 50c on the dollar.

PURSES.—All Combination Purses and Card Cases at half price for this sale.

Real Antelope Laces at Half Price, our entire stock on sale this week at 50c on the dollar.

PURSES.—All Combination Purses and Card Cases at half price for this sale.

Real Antelope Laces at Half Price, our entire stock on sale this week at 50c on the dollar.

PURSES.—All Combination Purses and Card Cases at half price for this sale.

Real Antelope Laces at Half Price, our entire stock on sale this week at 50c on the dollar.

PURSES.—All Combination Purses and Card Cases at half price for this sale.

Real Antelope Laces at Half Price, our entire stock on sale this week at 50c on the dollar.

PURSES.—All Combination Purses and Card Cases at half price for this sale.

Real Antelope Laces at Half Price, our entire stock on sale this week at 50c on the dollar.

PURSES.—All Combination Purses and Card Cases at half price for this sale.

Real Antelope Laces at Half Price, our entire stock on sale this week at 50c on the dollar.

PURSES.—All Combination Purses and Card Cases at half price for this sale.

Real Antelope Laces at Half Price, our entire stock on sale this week at 50c on the dollar.

PURSES.—All Combination Purses and Card Cases at half price for this sale.

Real Antelope Laces at Half Price, our entire stock on sale this week at 50c on the dollar.

PURSES.—All Combination Purses and Card Cases at half price for this sale.

Real Antelope Laces at Half Price, our entire stock on sale this week at 50c on the dollar.

PURSES.—All Combination Purses and Card Cases at half price for this sale.

Real Antelope Laces at Half Price, our entire stock on sale this week at 50c on the dollar.

PURSES.—All Combination Purses and Card Cases at half price for this sale.

Real Antelope Laces at Half Price, our entire stock on sale this week at 50c on the dollar.

PURSES.—All Combination Purses and Card Cases at half price for this sale.

Real Antelope Laces at Half Price, our entire stock on sale this week at 50c on the dollar.

PURSES.—All Combination Purses and Card Cases at half price for this sale.

Real Antelope Laces at Half Price, our entire stock on sale this week at 50c on the dollar.

### Pongee Dot Silk, regular \$1.50, now \$1.00

White Embroidery Swiss, regular 75c, now 50c

Black and White embroidery Swiss, regular 75c, now 50c

Black Embroidery Swiss, regular 75c, now 50c

Parisian Silk Tissue, regular 75c, now 50c

Mouselin De Soie Lace, regular 50c, now 37c

Mouselin De Soie, regular 50c, now 37c

Embroidered Swiss in Colors, regular \$1.50, now 75c

Linen Tissue Silk Embroidered, regular \$2.00, now \$1.00

Striped Silk Waistings, regular \$1.25, now 62c

Mercedized Silk Madras, regular 50c, now 45c

Mercedized Woven Silks, regular 50c, now 20c

Colored Wash Chiffons, regular 45c, now 35c

Black Lace Stripe Novelty, regular 50c, now 25c

Black Lace Stripe Novelty, regular 50c, now 35c

Black Lace Stripe Novelty, regular 50c, now 65c

Linen, Etamine Suits, regular \$1.25, now 85c

Mercedized Linens, regular 45c, now 30c

Dot Swiss, regular 50c, now 35c

Dot Swiss, regular 50c, now 35c

Dot Swiss, regular 50c, now 35c

Dot Swiss, regular 50c, now 35c

Dot Swiss, regular 50c, now 35c

Dot Swiss, regular 50c, now 35c

Dot Swiss, regular 50c, now 35c

Dot Swiss, regular 50c, now 35c

Dot Swiss, regular 50c, now 35c

Dot Swiss, regular 50c, now 35c

Dot Swiss, regular 50c, now 35c

Dot Swiss, regular 50c, now 35c

Dot Swiss, regular 50c, now 35c

Dot Swiss, regular 50c, now 35c

Dot Swiss, regular 50c, now 35c

Dot Swiss, regular 50c, now 35c

Dot Swiss, regular 50c, now 35c

Dot Swiss, regular 50c, now 35c

Dot Swiss, regular 50c, now 35c

### White Wash Chiffon, regular \$1.00, now 50c

Persian Lawn, regular 15c, now 10c

Persian Lawn, regular 15c, now 12c

Persian Lawn, regular 15c, now 25c

Persian Lawn, regular 15c, now 20c

Persian Lawn, regular 15c, now 35c

Persian Lawn, regular 15c, now 30c

Persian Lawn, regular 15c, now 50c

Silk Persian Lawn, in Black and White, regular 50c, 35c

Silk Persian Lawn, in Black and white, regular 60c, 40c

Check and Stripe Nainsook, regular 10c, now 8c

Check and Stripe Nainsook, regular 12c, now 9c

Check and Stripe Nainsook, regular 15c, now 10c

Check and Stripe Nainsook, regular 20c, now 15c

Check and Stripe Nainsook, regular 25c, now 17c

Check and Stripe Nainsook, regular 30c, now 20c

Check and Stripe Nainsook, regular 35c, now 25c

Check and Stripe Nainsook, regular 40c, now 30c

Check and Stripe Nainsook, regular 45c, now 35c

Check and Stripe Nainsook, regular 50c, now 40c

Check and Stripe Nainsook, regular 55c, now 45c

Check and Stripe Nainsook, regular 60c, now 50c

Check and Stripe Nainsook, regular 65c, now 55c

Check and Stripe Nainsook, regular 70c, now 60c

Check and Stripe Nainsook, regular 75c, now 65c

Check and Stripe Nainsook, regular 80c, now 70c

Check and Stripe Nainsook, regular 85c, now 75c

Check and Stripe Nainsook, regular 90c, now 80c

Check and Stripe Nainsook, regular 95c, now 85c

Check and Stripe Nainsook, regular 100c, now 90c

Check and Stripe Nainsook, regular 105c, now 95c

Check and Stripe Nainsook, regular 110c, now 100c

Check and Stripe Nainsook, regular 115c, now 105c

Check and Stripe Nainsook, regular 120c, now 110c

Check and Stripe Nainsook, regular 125c, now 115c

Check and Stripe Nainsook, regular 130c, now 120c