

# Park City's Metal Production for 1903 is Over \$5,000,000.

**A**NOTHER year of strenuous labor by the hardy miners of this great camp, is drawing to a close and our citizens pride themselves on the fact that they have within 12 months added more than \$5,000,000 to the world's stock of metals.

## TWO BIG BONANZAS.

The fortunate stockholders of the peerless Silver King and its great rival, the Daly-West, have in the meantime drawn down in dividends more than \$2,700,000 while the enormous ore bodies of both properties continue to enlarge with each month of development, and the ore reserves of each already blocked out guarantee a steady production of the present output for a period of at least 10 years to come.

## GREAT DALY-JUDGE.

Thus too, the Daly-Judge with its enormous extent of surface ground and its already opened ore bodies of apparently unlimited boundaries, bids fair, under its present management to equal in production any of its neighbors.

## ONTARIO ACTIVE.

The Ontario, which for so many years was the mainstay of the camp, but has for a brief period been undergoing a time of depression, now appears to be about to take its place once more among the heavy shippers.

## NEWER PROPERTIES.

Some of the new properties under process of development have not responded as quickly as expected to the efforts of their promoters but no discouragement is felt by those in charge as every month's work teaches the practical miner more and more of the secrets of these rocky hills, the lines of upheaval and fracture, the course of the scores of fissures, the trend of the ore bearing contacts and a better general knowledge of the conditions favorable to the deposit of the ore bodies for which this district has become so famous in the mining world.

## RECORD BREAKING YEAR.

Never in the history of the camp has there been so much legitimate prospecting as has been done here during the past 12 months. Never has such an amount of machinery been set up on the various properties, and never before has the systematic method of find-

beyond which no pay ore will be found, the majority are satisfied that wherever the proper formation is found no matter at what distance from the great producers paying mines may be developed by the expenditure of labor and capital.

## PARK CITY THE CENTER.

Park City is virtually the receiving point for fine mining districts, Uintah, Blue Ledge, Snake Creek, Big Cottonwood and Elkhorn; of these only Uintah has so far been opened to the stage of producing and shipping ore in quantities worthy of mention.

But if surface indications can be trusted the other districts will in due time add their quota of paying mines to the steadily increasing number of producers lying hereabouts.

## A FAVORED CAMP.

A favored camp in many ways is Park City, situated at the mouth of three canyons at an elevation of somewhat less than 7,000 feet above sea level, the climate is never very severe, summers are cool and pleasant, winters snowy but never extremely cold.

## GOOD SCHOOLS AND CHURCHES.

The town is well built for a mining camp and boasts of as good schools as can be found anywhere in the state. Fine churches indicate that our citizens are a law-abiding and God-fearing class of people, a fact which is further shown by the absence of serious crimes and the extremely few minor offenses committed. Good streets and sidewalks conduce to convenience of the citizens and the water supply well limited, is of the very best in Utah.

Everything around and about Park City gives evidence of a solid and permanent growth; the yield of the mines is steady and increasing year by year.

While the older mines have indeed absorbed a tremendous amount of ground in the vicinity of the proved ore bodies, yet there are still scores of undeveloped properties well worthy of the careful attention of men of capital and brains.

## THE ONTARIO.

The old Ontario has been somewhat overshadowed of late by the new crop of dividend payers but its record of \$14,000,000 paid to its stockholders will not be surpassed for several years to come and it is likely that the old property will in the near future resume the payment of bread money.

The mine is developed to a depth of 2,000 feet by a large three compartment shaft, is drained to a depth of 1,550 by a tunnel three miles in length. Immense bodies of low grade silver-lead ore are exposed in the lower levels, ready to be extracted on the completion of the new concentrator which is located on

just below the shafthouse and at present is handling about 250 tons every 24 hours.

The Ontario mill tunnel taps this property at a depth of 1,200 feet and through that avenue all the ore produced at the Daly-West shaft is brought down to the loading station on the rail, road, thus reducing the cost of transportation to a minimum.

From the Quincy shaft, now owned by the Daly-West, the ore is still hauled by team, but eventually when the proper connections are made, will be also sent through the tunnel. The Daly-West has already paid \$3,500,000 in dividends, is now paying \$117,000 per month and bids fair in the future to rival even the Ontario in the total amount of distributed as all signs indicate that the life of the Daly-West will be long and its total output enormous.

## DALY-JUDGE DOMAINS.

The Daly-Judge, lying southwest of the Silver King, at present the particular pride of Park City, is so well

level by a tunnel which also furnishes a cheap and convenient avenue for transporting the ore to the mill and coal to the hoisting works. The mill is very favorably located a short distance from the mouth of the tunnel and connected therewith by a tramway, over which the ore trains are drawn directly to the bins in the upper part of the mill. From 150 to 200 tons of crude ore are worked daily and from authentic reports the company must be earning in the neighborhood of \$50,000 net per month.

The property is completely equipped with excellent machinery, direct acting hoisting engine, compound air compressor, machine shop and every appliance necessary for first class work. That dividends must soon be forthcoming seems inevitable.

## PEERLESS SILVER KING.

The Silver King, at present the particular pride of Park City, is so well

The mine has already established an enviable reputation as a dividend payer, its total to date exceeding \$7,000,000, which amount is being regularly increased by payments of \$100,000 monthly with an extra \$100,000 for an Christmas present to its lucky owners, and its ore reserves are of such magnitude that it appears almost certain its total dividends will exceed those of the great Ontario.

Owing to the fact that the Alliance tunnel has drained one of the principal sources of water heretofore used by the King it has been found necessary to establish a pumping station at the mouth of that tunnel, from which water is pumped in quantity sufficient to supply the mill.

Only minor improvements have been made at this property during the past year, as the plant is so absolutely complete in every particular that no extensive additions were necessary. Extensive work has been carried on

and is expected to prove a paying proposition right from the start, and dividends may be looked for in a few months.

## SILVER KING CONSOLIDATED.

The Silver King Consolidated is a property from which much is expected when its shaft, now down 700 feet, shall have reached the objective point, that is to say, the ore bearing contact of lime and quartzite which underlies the property at a depth of 1,000 feet.

The prospect lies just west of and adjoins the Silver King and is well equipped with machinery, pumps, boilers and engines sufficient to sink 1,500 feet should such a depth be deemed necessary.

The company is strongly financed, principally by eastern parties, and is now in a position to push development as fast as men and money can drive the work.

## COMSTOCK SHAFT.

At the Comstock shaft has been sunk to the 500 foot mark during the present season and drifting for the vein is now going on.

On the 250 level a large body of milling ore was encountered and some thousands of tons were stopped, but from appearances the management decided that greater bodies existed at a deeper point, and hence work was resumed in the shaft.

The mine is fully equipped with engines, boilers, pumps and other machinery.

The mill, which is of about 100 tons capacity is modern in every respect, and for the short time it was run the past season operated in a very satisfactory manner.

It would seem that another summer should see the Comstock on a paying basis, and another bread winner added to Park City's list.

The California has for some months been worked but very little. The mine so far has been operated by means of tunnels and much ore was taken from the upper levels, and worked through the mill. It was, however, of so low a grade that but little if any profit was realized.

A shaft has been started for the purpose of reaching the vein at a point far below the old workings, where it is believed the ore will be of much better grade and similar to that of the Comstock, as it is generally understood that the same vein traverses both properties.

## THE SCOTTISH CHIEF.

One of the most promising properties now being developed in this district is the Scottish Chief, which lies on Scott hill, and is opened by an incline from the Cottonwood side, to a depth of over 300 feet.

The mine is already producing an ex-

cellent quality of ore and one or two shipments were made this season. At several points in the incline short cross-cuts to the vein show ore bodies from 12 to 15 inches in thickness and the ore seems continuous for the entire distance penetrated.

The mine is operated by means of a gasoline hoist, and is equipped with boarding house, blacksmith shop and other buildings necessary for steady operation.

The Park Summit company's group of 12 claims lies just northeast of the Scottish Chief and is being worked by means of an incline now down about 125 feet. This property has an excellent surface showing, the vein carrying in some places as high as \$10 in gold, and with depth should enter the ranks of the producers.

East of the Scottish Chief lie the Silver Bell, and the D. & M., both of which show considerable quantities of excellent ore, but have not as yet begun shipments.

Both properties are being operated by small forces and development is necessarily slow.

Work in the shaft was suspended some time since, and future operations at present seem uncertain.

This property has produced many thousands of dollars and it would seem with proper development, should be easily placed on a paying basis.

The Minola, a near neighbor of the Creole, has been operated steadily during the past year, and at present seems almost ready to create a sensation.

The mine is opened by means of a tunnel from which, 300 feet in, is sunk a perpendicular shaft 500 feet to the vein which at that point is nearly 30 feet in width. Drifts are being run northeast and southwest along the vein which, while not yet making ore in quantity is strongly mineralized, especially with iron and manganese, and some chlorides. News of a strike in the Minola at any time now would occasion but little if any surprise among men familiar with the property.

The Corona, a new company, has started an incline on the hill north of town for the purpose of prospecting a lime and quartzite contact which crosses the claim, and is supposed to be a continuation of the Silver King, Creole and Minola contact.

Hoisting is performed by a horse whim and fair progress is being made in the shaft.

The Constellation is still working a few men on the 300 level following one of the several fissures which have been

cut in that property and which should at some point make ore in good quantities.

At AMERICAN FLAG.

The American Flag is now a mine of good proportions and can start shipping ore any day the management sees fit.

This mine, which lies east of the King and north of the Ontario, is principally a gold proposition and the first of that nature yet opened in this district.

Its ore bodies on the upper levels are large and well defined and carry excellent values in the yellow metal.

The shaft is being sunk to 1,200 feet depth after which it is expected that the production of ore will begin at once.

The plant is in first class condition and capable of doing the work for a big mine.

WABASH AND NEW YORK.

At the Wabash development still continues at depth with good indications of ore existing in quantity at some point as all the fissures which have been cut show a fair degree of mineralization. The stockholders are to be commended for their persistent and well directed efforts to make of the property a paying mine.

The New York Bonanza's shaft has been sunk to the 400 level and explorations are being conducted on the third and fourth levels.

On the 400 ore is being encountered in considerable quantities and it is believed that large bodies will be opened in the next few weeks, perhaps in days.

The mine is equipped with fine machinery, capable of handling a large tonnage and the outlook for this property is excellent.

DOWN 700 FEET.

At the Goldridge shaft is now down 700 feet and cutting for the ledge will begin in a short time when developments worthy of remark are confidently expected.

Considerable work has been done on this property in the past, through a tunnel and winze and very fine ore is exposed in several places, so the company has a very reasonable expectation of developing a big mine at the increased depth.

The Nalldriver is very finely equipped for machinery, having secured the hoisting engine from the old Daly, and is in perfect shape to handle a large tonnage easily and rapidly.

On the Little Bell, the next door neighbor of the Quincy, the shaft has attained a depth of 700 feet and cross-cutting will begin as soon as a station can be cut. In the 200 level of this property some excellent ore was found in two fissures, the best, including the fact that peck is continually being taken out in paying quantities, so the management decided to go farther down and

ON BONANZA PLAT.

Just over the divide from the Little Bell and Quincy is located the J. I. C. company's plant on a promising group of five claims.

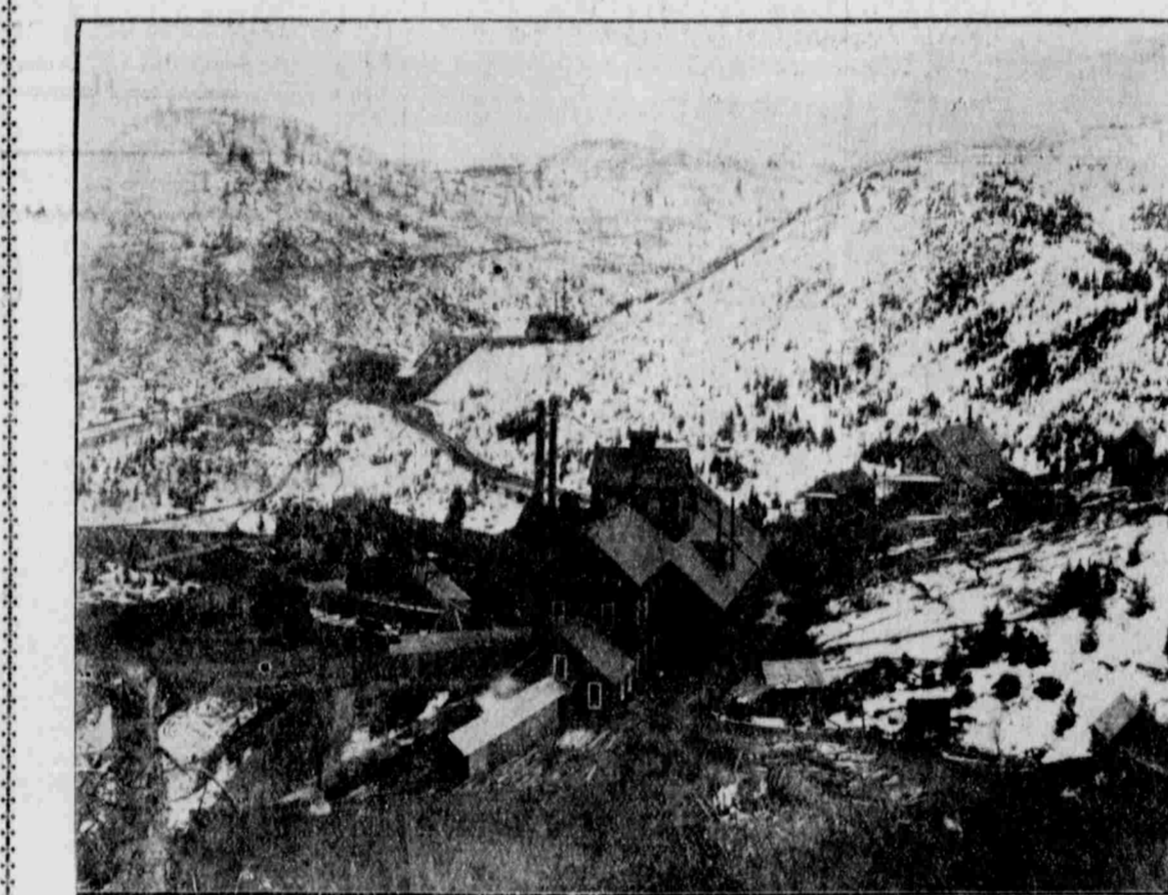
That an ore body of large dimensions lies in close proximity to the present workings of the company is clearly indicated by the numerous stringers of ore encountered, and the fact that peck is continually being taken out which is literally shot full of cube galena.

At the Wolverine work has steadily progressed, principally for the past few months by raising heading for the contact which lies above the tunnel workings of the mine.

The St. Louis Vaguer has sunk a winze some 200 feet on what is supposed to be the main contact and has taken out more or less very high grade ore from the very bottom. Some two or three hundred sacks of the best ore

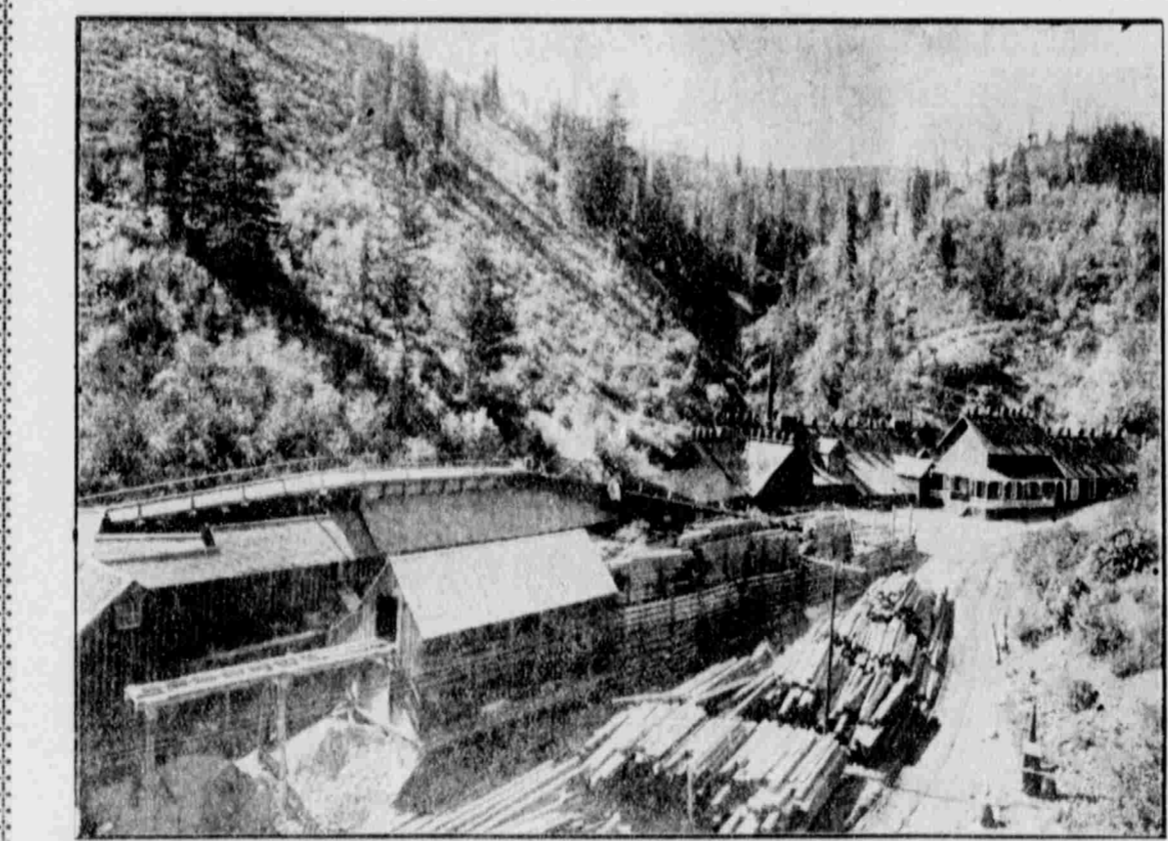


DALY-JUDGE HOIST, OFFICE AND BOARDING HOUSE.



DALY-WEST MINE AND MILL.

With Quincy Mine Hoist in Background.



DALY-JUDGE-ANCHOR TUNNEL.

known and so much written about that little remains to be said. Its magnificent bodies of ore have been viewed by nearly every visitor who has taken time to look over the resources of the camp.

Its output of first and second class ore is so steady and its dividends paid with such regularity that to the investor the property seems more of the nature of some vast manufacturing enterprise, whose profits are only limited by the amount of work performed.

The King has the most extensive plant of any mine in the district. Its hoisting works are among the best, its automatic sampler in which four men can handle 75 tons of ore per hour, and its splendid mill, its aerial tram and loading station capable of handling 500 tons per day are all built in the finest possible manner and with a view of continuous work for many years.

by the company in the old Alliance, which now belongs to the King and interesting developments are expected in that property in the near future.

## KEITH-KEARNS PROPERTY.

The Keith-Kearns company in a quiet and unassuming manner has acquired possession of the old Crescent, the Apex and several other properties on Rebellion hill, and by means of the Hanauer tunnel has already developed a big producing mine.

At the mouth of the Hanauer tunnel a mill has been erected, capable of handling 100 tons of ore per day, which has just gone into commission.

The mill is said to be the very finest so far built in the camp, being equipped with the very latest and most improved machinery.

The mine is already in condition to supply all the ore the mill can handle



THE NALLDRIER MILL.

cellent quality of ore and one or two shipments were made this season. At several points in the incline short cross-cuts to the vein show ore bodies from 12 to 15 inches in thickness and the ore seems continuous for the entire distance penetrated.

The mine is operated by means of a gasoline hoist, and is equipped with boarding house, blacksmith shop and other buildings necessary for steady operation.

The Park Summit company's group of 12 claims lies just northeast of the Scottish Chief and is being worked by means of an incline now down about 125 feet. This property has an excellent surface showing, the vein carrying in some places as high as \$10 in gold, and with depth should enter the ranks of the producers.

East of the Scottish Chief lie the Silver Bell, and the D. & M., both of which show considerable quantities of excellent ore, but have not as yet begun shipments.

Both properties are being operated by small forces and development is necessarily slow.

Work in the shaft was suspended some time since, and future operations at present seem uncertain.

This property has produced many thousands of dollars and it would seem with proper development, should be easily placed on a paying basis.

The Minola, a near neighbor of the Creole, has been operated steadily during the past year, and at present seems almost ready to create a sensation.

The mine is opened by means of a tunnel from which, 300 feet in, is sunk a perpendicular shaft 500 feet to the vein which at that point is nearly 30 feet in width. Drifts are being run northeast and southwest along the vein which, while not yet making ore in quantity is strongly mineralized, especially with iron and manganese, and some chlorides. News of a strike in the Minola at any time now would occasion but little if any surprise among men familiar with the property.

The Corona, a new company, has started an incline on the hill north of town for the purpose of prospecting a lime and quartzite contact which crosses the claim, and is supposed to be a continuation of the Silver King, Creole and Minola contact.

Hoisting is performed by a horse whim and fair progress is being made in the shaft.

The Constellation is still working a few men on the 300 level following one of the several fissures which have been

cut in that property and which should at some point make ore in good quantities.

At AMERICAN FLAG.

The American Flag is now a mine of good proportions and can start shipping ore any day the management sees fit.

This mine, which lies east of the King and north of the Ontario, is principally a gold proposition and the first of that nature yet opened in this district.

Its ore bodies on the upper levels are large and well defined and carry excellent values in the yellow metal.

The shaft is being sunk to 1,200 feet depth after which it is expected that the production of ore will begin at once.

The plant is in first class condition and capable of doing the work for a big mine.



NEW KEITH-KEARNS MILL.

ing ore bodies in the known mineral zone been better exemplified than by the operations carried on by the men who have invested in Park City prospects.

It is generally understood, and admitted, that this is not an ideal mining camp for poor men, but few dividends have been paid from a less depth than 700 feet, except perhaps at the Ontario, and the Woodside-Mayflower discoveries which led to the opening of the Silver King.

Brains, labor and capital are all necessary factors in the making of mines in this district for it is an undeniable fact that most of our mines are made, not found, that is to say, the ore is not found on the surface but only by deep shafts and extensive explorations carried on through the solid rock.

## REWARD FOR ENTERPRISE.

Yet the reward reaped for a successful enterprise is so great compared with the outlay that most men, with any knowledge of mining, are willing to invest their money in any property which from its location is supposed to be in the mineral zone, or if outside the known belt if the surface indications are similar to those of known producers within the zone.

For instance, the Quincy mine now absorbed by the Daly-West, was for many years worked in a desultory manner by means of tunnels, inclines, and other surface openings, but never produced a dollar until men with capital took hold of it and by means of a shaft began a systematic development of the property. In 15 months, with an outlay of approximately \$35,000 the mine was placed on a paying basis and in less than three years from the time of starting the shaft the men who had drawn out \$1,200,000 in dividends, and today under the management of the Daly-West the mine is producing as well as ever.

True, the history of the Quincy is remarkable but not more so than that of other properties in this vicinity, it simply shows what good judgment backed by a reasonable amount of capital and plenty of courage can accomplish in ground which had for years been on the market at a reasonable price, and time after time was refused by men who had made millions out of other properties in the district.

## LIMITS ARE UNKNOWN.

The limits of the ore bearing fissures and contacts of this and adjoining districts are unknown and men who have watched the slow but steady opening of new ore bodies are compelled each year to admit that ores of this camp extend further than they thought possible the year previous, and while some still pretend to know of its limits

the site of the old amalgamating plant near the mouth of the 600 foot tunnel.

From this tunnel a shaft is being raised a distance of about 100 feet to the mill, through which the crude ore will be hoisted from the tunnel thus doing away with all surface transportation between mine and mill. The mill will be of the usual type of concentrator, in use by the other mines of this place, and will be fitted with crushers, rolls, jigs, Wilfley tables, vanners, slime tanks, presses and dryers, with a working capacity of about 200 tons of crude ore daily. That the mine can supply this amount for an indefinite period is certain and a considerable addition to the working force is anticipated when the mill begins operations which will be in a very few weeks.

A serious cave-in in the shaft at the 500 level a few weeks since gave some uneasiness to the management and for some hours threatened the loss of the lower levels but prompt and energetic work prevented a calamity and the shaft is now as good as ever.

Another year should put the Ontario in the dividend column again.

## THE DALY MINE.

But very little has been done at the Daly for two or three years, some ore has been extracted from the old workings by lessees, and encouraged by the remarkable output of the Quincy, a new shaft has been sunk on the Mazepa claim near that property. At a depth of 135 feet a cross-cut to the ledge has developed a four-foot vein containing considerable high grade galena with about eight inches solid ore. This is considered very encouraging and many believe that another Quincy is about to be developed at the old Daly.

## FAMOUS DALY-WEST.

This great property adjoins the Daly on the south and west and the Daly-Judge on the east and north and contains some 500 acres of the best mineralized ground in the district. It is fully equipped with a fine hoisting plant, air compressors and all appliances necessary for economical mining. Its ore bodies are among the most extensive which have yet been opened in this home of bonanzas. The shaft is now at a depth of 1,400 feet and is being sunk 300 feet more for the purpose of driving under the great body of ore which has been opened in the fissure lying northwest of the shaft by a winze from the 1,400 level.

The shaft is being sunk by means of an auxiliary engine placed on the 1,400 level and operated by compressed air. This leaves the main hoist free to handle the immense tonnage which the mine is now daily producing both of first and second class ore. All second class ore is concentrated at the mill

and adjoining the Daly-West, was formerly known as the Anchor and has been for many years a large producer. Nearly all the ore previously mined, however, has been rather low grade and very base, making concentration absolutely necessary and somewhat difficult. Lately, however, new bodies of high grade ore, galena and gray copper have been discovered on the 1,400 level far south of the shaft in an entirely new and undeveloped part of the company's ground and it is confidently expected that the Daly-Judge will soon take its place among the dividend payers of the district. The company has the most extensive holding of any property in this section, its territory extending from Uintah district through Snake Creek and into Big Cottonwood. Its reserves of low grade ore are practically unlimited, its shaft has a depth of 1,700 feet and is drained to the 1,200