

THIS IS A FREE COUNTRY.

Young man, don't squander all your cash on dollars, dimes and cents. Buy your money's worth of goods at the store. And cultivate your brain. Let Edmunds work and Tucker talk. While all the others read. But when it comes to selling fish, you bet I take the lead.

JOHN E. EDMUNDS,
Is still in the van, having removed to No. 324 EIGHTH EAST STREET. Where all kinds of fish can be found at the lowest figures.

Wholesale and Retail.
Hotels and families supplied. Wagon calls every day at your door. Send in your orders.
324 EIGHTH EAST STREET.

Graefenberg PILLS.

These PILLS act with great mildness, and may be taken at any time with benefit.

They cure all forms of Malarial Diseases and Fevers, and should be used to stimulate the Liver and Kidneys to healthy action. They are invaluable for Headache, Biliousness and Bowel Complaints.

SOLD BY DRUGGISTS; 25 CENTS PER BOX.

GRAEFENBERG CHILDREN'S PANACEA.
Best Medicine for Children. 50 cents per bottle.

GRAEFENBERG CO.
111 Chambers St., N. Y.

Utah Central Railway.

NEW TIME CARD, MARCH 1, 1887.

PASSENGER TRAINS LEAVE SALT LAKE DAILY, AS FOLLOWS:

Going North.	Going South.
Atlantic Express at 8:00 a.m.	Missouri Express at 7:30 a.m.
Park City Express at 4:00 p.m.	Missouri Express at 4:00 p.m.

Passenger Trains Arrive in Salt Lake, daily as follows:

From North.	From South.
Pacific Express at 7:30 p.m.	Missouri Express at 7:30 p.m.
Park City Express at 11:25 a.m.	Missouri Express at 10:30 a.m.

FRANCIS COPE, General Freight and Passenger Agent.
JOHN SHARP, General Superintendent.

CORTICELLI SILK

HAVE A RECORD OF 46 YEARS SUCCESSFUL BUSINESS, Antedating and Excelling all Competitors.



CORTICELLI SPOOL SILK

STANDS PRE-EMINENT AS THE SMOOTHEST AND STRONGEST. CONSUMERS SHOULD REMEMBER THAT FLORENCE KNITTING SILK IS PEERLESS.

OUR ILLUSTRATED BOOK on Knitting (No. 5), will be sent on receipt of three 2-cent stamps.

SALESDROOMS FOR WEST AND SOUTH: 317 Broadway, St. Louis; 88 West Third Street, Cincinnati; 26 Camp Street, New Orleans.

C. H. SAMPSON, Agent.

A MAN

WHO IS UNACQUAINTED WITH THE GEOGRAPHY OF THIS COUNTRY, WILL SEE BY EXAMINING THIS MAP, THAT THE



CHICAGO, ROCK ISLAND & PACIFIC RY

By reason of its central position, close relation to principal lines East of Chicago and continuous lines at terminal points West, Northwest and Southwest—the only true middle link in that transcontinental system which connects the Pacific States with the Atlantic and Gulf of Mexico.

The Rock Island main line and branches include Chicago, St. Louis, St. Paul, Minneapolis, Des Moines, Iowa, and Kansas City, Mo. Branches extend to St. Joseph, Mo.; Leavenworth, Kan.; and St. Paul, Minn. The Rock Island line is the shortest route from Chicago to St. Paul, Minneapolis, and St. Joseph, Mo., and to Kansas City, Mo., and Leavenworth, Kan.

THE GREAT ROCK ISLAND ROUTE

Guarantees Speed, Comfort and Safety to those who travel over it. Its roadbed is thoroughly ballasted. Its track is of heavy steel. Its bridges are solid structures of stone and iron. Its rolling stock is perfect in construction and equipment. It has all the safety appliances that mechanical genius has invented and experience proved valuable. Its practical operation in conservative and methodical—its discipline strict and exacting. The luxury of its passenger accommodations is unequalled.

ALL EXPRESS TRAINS between Chicago and St. Paul, Minneapolis, St. Joseph, Mo., and Kansas City, Mo., are equipped with Pullman Palace Parlors and Sleeping Cars, and are provided with excellent meals and service.

THE FAMOUS ALBERT LEA ROUTE

Is the direct, favorite line between Chicago and Minneapolis and St. Paul. Over this route the Pullman Palace Parlor and Sleeping Car trains run daily to the summer resorts, picturesque localities and hunting and fishing grounds of Iowa and Minnesota. The rich wheat fields and grazing lands of interior Dakota are reached via Watertown, Minn. A short detour from Watertown, Minn., via Rapid and Grand Rapids, offers superior inducements to travelers between Minneapolis and St. Paul, and to those who wish to visit the famous Lake Superior and Lake Itasca.

All classes of passengers, especially families, ladies and children, receive from officials and conductors the most courteous and attentive service.

For full particulars, obtainable at all principal Ticket Offices in the United States and Canada—or any desired information, address:

W. R. GABLE, Gen'l Agent, Chicago.
E. ST. JOHN, Gen'l Agent, St. Paul.
E. A. HOLBROOK, Gen'l Agent, Minneapolis.

Utah Cracker Factory

27 EAST THIRD STREET, SALT LAKE CITY.

Manufacturers of PLAIN AND FANCY CRACKERS, CAKES & JUMBLES. Guaranteed to be equal to any imported.

FOR SALE BY R. C. M. L. SALT LAKE CITY, OGDEN AND LOGAN.

Co-operative Stores and other dealers would do well to patronize these goods and introduce them to their customers.

THE STALLION Prince Richelieu!

WILL MAKE THE SEASON OF 1887 at the farm of A. W. Davis, one mile west and one half mile north of the white bridge. Prince Richelieu is a beautiful bay, fifteen hands three inches high, and is a Hambletonian and Morgan blood.

Terms, \$15.00 a Season.

NEWSPAPER ADVERTISING

For a check for \$5 we will print a ten line advertisement in the Salt Lake City Standard for one month. The advertisement will appear in but a single issue of any paper, and consequently will be placed before one million different newspaper readers. For \$10 we will print a twenty line advertisement in the Salt Lake City Standard for one month. The advertisement will appear in but a single issue of any paper, and consequently will be placed before one million different newspaper readers. For \$20 we will print a forty line advertisement in the Salt Lake City Standard for one month. The advertisement will appear in but a single issue of any paper, and consequently will be placed before one million different newspaper readers.

G. R. EMERY, S. H. LOVE, J. BELL, JR.

Emery, Love & Co.,

Wholesale and Retail Dealers in ILLUMINATING AND LUBRICATING OILS

MUSIC HALL, corner Third and First Streets, Salt Lake City.

Utah Central Railway.

NEW TIME CARD, MARCH 1, 1887.

PASSENGER TRAINS LEAVE SALT LAKE DAILY, AS FOLLOWS:

Going North.	Going South.
Atlantic Express at 8:00 a.m.	Missouri Express at 7:30 a.m.
Park City Express at 4:00 p.m.	Missouri Express at 4:00 p.m.

Passenger Trains Arrive in Salt Lake, daily as follows:

From North.	From South.
Pacific Express at 7:30 p.m.	Missouri Express at 7:30 p.m.
Park City Express at 11:25 a.m.	Missouri Express at 10:30 a.m.

FRANCIS COPE, General Freight and Passenger Agent.
JOHN SHARP, General Superintendent.

CORTICELLI SILK

HAVE A RECORD OF 46 YEARS SUCCESSFUL BUSINESS, Antedating and Excelling all Competitors.



CORTICELLI SPOOL SILK

STANDS PRE-EMINENT AS THE SMOOTHEST AND STRONGEST. CONSUMERS SHOULD REMEMBER THAT FLORENCE KNITTING SILK IS PEERLESS.

OUR ILLUSTRATED BOOK on Knitting (No. 5), will be sent on receipt of three 2-cent stamps.

SALESDROOMS FOR WEST AND SOUTH: 317 Broadway, St. Louis; 88 West Third Street, Cincinnati; 26 Camp Street, New Orleans.

C. H. SAMPSON, Agent.

A MAN

WHO IS UNACQUAINTED WITH THE GEOGRAPHY OF THIS COUNTRY, WILL SEE BY EXAMINING THIS MAP, THAT THE



CHICAGO, ROCK ISLAND & PACIFIC RY

By reason of its central position, close relation to principal lines East of Chicago and continuous lines at terminal points West, Northwest and Southwest—the only true middle link in that transcontinental system which connects the Pacific States with the Atlantic and Gulf of Mexico.

The Rock Island main line and branches include Chicago, St. Louis, St. Paul, Minneapolis, Des Moines, Iowa, and Kansas City, Mo. Branches extend to St. Joseph, Mo.; Leavenworth, Kan.; and St. Paul, Minn. The Rock Island line is the shortest route from Chicago to St. Paul, Minneapolis, and St. Joseph, Mo., and to Kansas City, Mo., and Leavenworth, Kan.

THE GREAT ROCK ISLAND ROUTE

Guarantees Speed, Comfort and Safety to those who travel over it. Its roadbed is thoroughly ballasted. Its track is of heavy steel. Its bridges are solid structures of stone and iron. Its rolling stock is perfect in construction and equipment. It has all the safety appliances that mechanical genius has invented and experience proved valuable. Its practical operation in conservative and methodical—its discipline strict and exacting. The luxury of its passenger accommodations is unequalled.

ALL EXPRESS TRAINS between Chicago and St. Paul, Minneapolis, St. Joseph, Mo., and Kansas City, Mo., are equipped with Pullman Palace Parlors and Sleeping Cars, and are provided with excellent meals and service.

THE FAMOUS ALBERT LEA ROUTE

Is the direct, favorite line between Chicago and Minneapolis and St. Paul. Over this route the Pullman Palace Parlor and Sleeping Car trains run daily to the summer resorts, picturesque localities and hunting and fishing grounds of Iowa and Minnesota. The rich wheat fields and grazing lands of interior Dakota are reached via Watertown, Minn. A short detour from Watertown, Minn., via Rapid and Grand Rapids, offers superior inducements to travelers between Minneapolis and St. Paul, and to those who wish to visit the famous Lake Superior and Lake Itasca.

All classes of passengers, especially families, ladies and children, receive from officials and conductors the most courteous and attentive service.

For full particulars, obtainable at all principal Ticket Offices in the United States and Canada—or any desired information, address:

W. R. GABLE, Gen'l Agent, Chicago.
E. ST. JOHN, Gen'l Agent, St. Paul.
E. A. HOLBROOK, Gen'l Agent, Minneapolis.

Utah Cracker Factory

27 EAST THIRD STREET, SALT LAKE CITY.

Manufacturers of PLAIN AND FANCY CRACKERS, CAKES & JUMBLES. Guaranteed to be equal to any imported.

FOR SALE BY R. C. M. L. SALT LAKE CITY, OGDEN AND LOGAN.

Co-operative Stores and other dealers would do well to patronize these goods and introduce them to their customers.

THE STALLION Prince Richelieu!

WILL MAKE THE SEASON OF 1887 at the farm of A. W. Davis, one mile west and one half mile north of the white bridge. Prince Richelieu is a beautiful bay, fifteen hands three inches high, and is a Hambletonian and Morgan blood.

Terms, \$15.00 a Season.

NEWSPAPER ADVERTISING

For a check for \$5 we will print a ten line advertisement in the Salt Lake City Standard for one month. The advertisement will appear in but a single issue of any paper, and consequently will be placed before one million different newspaper readers. For \$10 we will print a twenty line advertisement in the Salt Lake City Standard for one month. The advertisement will appear in but a single issue of any paper, and consequently will be placed before one million different newspaper readers. For \$20 we will print a forty line advertisement in the Salt Lake City Standard for one month. The advertisement will appear in but a single issue of any paper, and consequently will be placed before one million different newspaper readers.

G. R. EMERY, S. H. LOVE, J. BELL, JR.

Emery, Love & Co.,

Wholesale and Retail Dealers in ILLUMINATING AND LUBRICATING OILS

MUSIC HALL, corner Third and First Streets, Salt Lake City.

Utah Central Railway.

NEW TIME CARD, MARCH 1, 1887.

PASSENGER TRAINS LEAVE SALT LAKE DAILY, AS FOLLOWS:

Going North.	Going South.
Atlantic Express at 8:00 a.m.	Missouri Express at 7:30 a.m.
Park City Express at 4:00 p.m.	Missouri Express at 4:00 p.m.

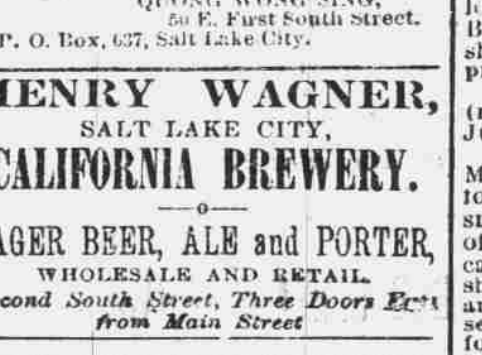
Passenger Trains Arrive in Salt Lake, daily as follows:

From North.	From South.
Pacific Express at 7:30 p.m.	Missouri Express at 7:30 p.m.
Park City Express at 11:25 a.m.	Missouri Express at 10:30 a.m.

FRANCIS COPE, General Freight and Passenger Agent.
JOHN SHARP, General Superintendent.

CORTICELLI SILK

HAVE A RECORD OF 46 YEARS SUCCESSFUL BUSINESS, Antedating and Excelling all Competitors.



CORTICELLI SPOOL SILK

STANDS PRE-EMINENT AS THE SMOOTHEST AND STRONGEST. CONSUMERS SHOULD REMEMBER THAT FLORENCE KNITTING SILK IS PEERLESS.

OUR ILLUSTRATED BOOK on Knitting (No. 5), will be sent on receipt of three 2-cent stamps.

SALESDROOMS FOR WEST AND SOUTH: 317 Broadway, St. Louis; 88 West Third Street, Cincinnati; 26 Camp Street, New Orleans.

C. H. SAMPSON, Agent.

A MAN

WHO IS UNACQUAINTED WITH THE GEOGRAPHY OF THIS COUNTRY, WILL SEE BY EXAMINING THIS MAP, THAT THE



CHICAGO, ROCK ISLAND & PACIFIC RY

By reason of its central position, close relation to principal lines East of Chicago and continuous lines at terminal points West, Northwest and Southwest—the only true middle link in that transcontinental system which connects the Pacific States with the Atlantic and Gulf of Mexico.

The Rock Island main line and branches include Chicago, St. Louis, St. Paul, Minneapolis, Des Moines, Iowa, and Kansas City, Mo. Branches extend to St. Joseph, Mo.; Leavenworth, Kan.; and St. Paul, Minn. The Rock Island line is the shortest route from Chicago to St. Paul, Minneapolis, and St. Joseph, Mo., and to Kansas City, Mo., and Leavenworth, Kan.

THE GREAT ROCK ISLAND ROUTE

Guarantees Speed, Comfort and Safety to those who travel over it. Its roadbed is thoroughly ballasted. Its track is of heavy steel. Its bridges are solid structures of stone and iron. Its rolling stock is perfect in construction and equipment. It has all the safety appliances that mechanical genius has invented and experience proved valuable. Its practical operation in conservative and methodical—its discipline strict and exacting. The luxury of its passenger accommodations is unequalled.

ALL EXPRESS TRAINS between Chicago and St. Paul, Minneapolis, St. Joseph, Mo., and Kansas City, Mo., are equipped with Pullman Palace Parlors and Sleeping Cars, and are provided with excellent meals and service.

THE FAMOUS ALBERT LEA ROUTE

Is the direct, favorite line between Chicago and Minneapolis and St. Paul. Over this route the Pullman Palace Parlor and Sleeping Car trains run daily to the summer resorts, picturesque localities and hunting and fishing grounds of Iowa and Minnesota. The rich wheat fields and grazing lands of interior Dakota are reached via Watertown, Minn. A short detour from Watertown, Minn., via Rapid and Grand Rapids, offers superior inducements to travelers between Minneapolis and St. Paul, and to those who wish to visit the famous Lake Superior and Lake Itasca.

All classes of passengers, especially families, ladies and children, receive from officials and conductors the most courteous and attentive service.

For full particulars, obtainable at all principal Ticket Offices in the United States and Canada—or any desired information, address:

W. R. GABLE, Gen'l Agent, Chicago.
E. ST. JOHN, Gen'l Agent, St. Paul.
E. A. HOLBROOK, Gen'l Agent, Minneapolis.

Utah Cracker Factory

27 EAST THIRD STREET, SALT LAKE CITY.

Manufacturers of PLAIN AND FANCY CRACKERS, CAKES & JUMBLES. Guaranteed to be equal to any imported.

FOR SALE BY R. C. M. L. SALT LAKE CITY, OGDEN AND LOGAN.

Co-operative Stores and other dealers would do well to patronize these goods and introduce them to their customers.

THE STALLION Prince Richelieu!

WILL MAKE THE SEASON OF 1887 at the farm of A. W. Davis, one mile west and one half mile north of the white bridge. Prince Richelieu is a beautiful bay, fifteen hands three inches high, and is a Hambletonian and Morgan blood.

Terms, \$15.00 a Season.

NEWSPAPER ADVERTISING

For a check for \$5 we will print a ten line advertisement in the Salt Lake City Standard for one month. The advertisement will appear in but a single issue of any paper, and consequently will be placed before one million different newspaper readers. For \$10 we will print a twenty line advertisement in the Salt Lake City Standard for one month. The advertisement will appear in but a single issue of any paper, and consequently will be placed before one million different newspaper readers. For \$20 we will print a forty line advertisement in the Salt Lake City Standard for one month. The advertisement will appear in but a single issue of any paper, and consequently will be placed before one million different newspaper readers.

G. R. EMERY, S. H. LOVE, J. BELL, JR.

Emery, Love & Co.,

Wholesale and Retail Dealers in ILLUMINATING AND LUBRICATING OILS

MUSIC HALL, corner Third and First Streets, Salt Lake City.

Utah Central Railway.

NEW TIME CARD, MARCH 1, 1887.

PASSENGER TRAINS LEAVE SALT LAKE DAILY, AS FOLLOWS:

Going North.	Going South.
Atlantic Express at 8:00 a.m.	Missouri Express at 7:30 a.m.
Park City Express at 4:00 p.m.	Missouri Express at 4:00 p.m.

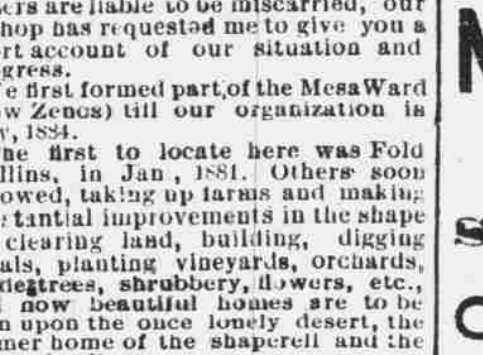
Passenger Trains Arrive in Salt Lake, daily as follows:

From North.	From South.
Pacific Express at 7:30 p.m.	Missouri Express at 7:30 p.m.
Park City Express at 11:25 a.m.	Missouri Express at 10:30 a.m.

FRANCIS COPE, General Freight and Passenger Agent.
JOHN SHARP, General Superintendent.

CORTICELLI SILK

HAVE A RECORD OF 46 YEARS SUCCESSFUL BUSINESS, Antedating and Excelling all Competitors.



CORTICELLI SPOOL SILK

STANDS PRE-EMINENT AS THE SMOOTHEST AND STRONGEST. CONSUMERS SHOULD REMEMBER THAT FLORENCE KNITTING SILK IS PEERLESS.

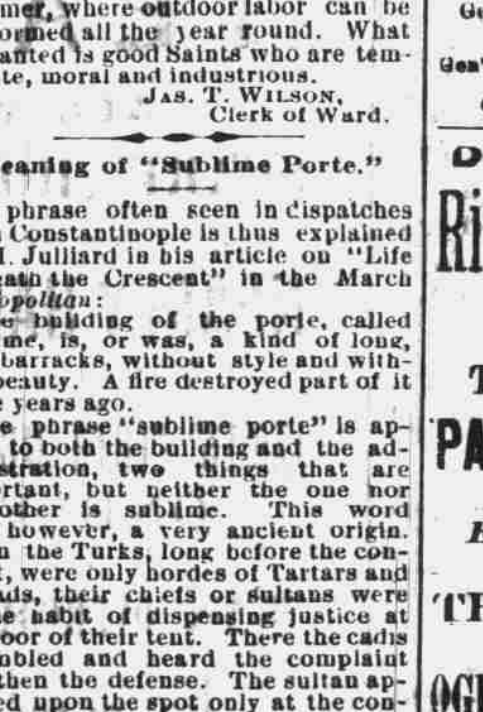
OUR ILLUSTRATED BOOK on Knitting (No. 5), will be sent on receipt of three 2-cent stamps.

SALESDROOMS FOR WEST AND SOUTH: 317 Broadway, St. Louis; 88 West Third Street, Cincinnati; 26 Camp Street, New Orleans.

C. H. SAMPSON, Agent.

A MAN

WHO IS UNACQUAINTED WITH THE GEOGRAPHY OF THIS COUNTRY, WILL SEE BY EXAMINING THIS MAP, THAT THE



CHICAGO, ROCK ISLAND & PACIFIC RY

By reason of its central position, close relation to principal lines East of Chicago and continuous lines at terminal points West, Northwest and Southwest—the only true middle link in that transcontinental system which connects the Pacific States with the Atlantic and Gulf of Mexico.

The Rock Island main line and branches include Chicago, St. Louis, St. Paul, Minneapolis, Des Moines, Iowa, and Kansas City, Mo. Branches extend to St. Joseph, Mo.; Leavenworth, Kan.; and St. Paul, Minn. The Rock Island line is the shortest route from Chicago to St. Paul, Minneapolis, and St. Joseph, Mo., and to Kansas City, Mo., and Leavenworth, Kan.

THE GREAT ROCK ISLAND ROUTE

Guarantees Speed, Comfort and Safety to those who travel over it. Its roadbed is thoroughly ballasted. Its track is of heavy steel. Its bridges are solid structures of stone and iron. Its rolling stock is perfect in construction and equipment. It has all the safety appliances that mechanical genius has invented and experience proved valuable. Its practical operation in conservative and methodical—its discipline strict and exacting. The luxury of its passenger accommodations is unequalled.

ALL EXPRESS TRAINS between Chicago and St. Paul, Minneapolis, St. Joseph, Mo., and Kansas City, Mo., are equipped with Pullman Palace Parlors and Sleeping Cars, and are provided with excellent meals and service.

THE FAMOUS ALBERT LEA ROUTE

Is the direct, favorite line between Chicago and Minneapolis and St. Paul. Over this route the Pullman Palace Parlor and Sleeping Car trains run daily to the summer resorts, picturesque localities and hunting and fishing grounds of Iowa and Minnesota. The rich wheat fields and grazing lands of interior Dakota are reached via Watertown, Minn. A short detour from Watertown, Minn., via Rapid and Grand Rapids, offers superior inducements to travelers between Minneapolis and St. Paul, and to those who wish to visit the famous Lake Superior and Lake Itasca.

All classes of passengers, especially families, ladies and children, receive from officials and conductors the most courteous and attentive service.

For full particulars, obtainable at all principal Ticket Offices in the United States and Canada—or any desired information, address:

W. R. GABLE, Gen'l Agent, Chicago.
E. ST. JOHN, Gen'l Agent, St. Paul.
E. A. HOLBROOK, Gen'l Agent, Minneapolis.

Utah Cracker Factory

27 EAST THIRD STREET, SALT LAKE CITY.

Manufacturers of PLAIN AND FANCY CRACKERS, CAKES & JUMBLES. Guaranteed to be equal to any imported.

FOR SALE BY R. C. M. L. SALT LAKE CITY, OGDEN AND LOGAN.

Co-operative Stores and other dealers would do well to patronize these goods and introduce them to their customers.

THE STALLION Prince Richelieu!

WILL MAKE THE SEASON OF 1887 at the farm of A. W. Davis, one mile west and one half mile north of the white bridge. Prince Richelieu is a beautiful bay, fifteen hands three inches high, and is a Hambletonian and Morgan blood.

Terms, \$15.00 a Season.

NEWSPAPER ADVERTISING

For a check for \$5 we will print a ten line advertisement in the Salt Lake City Standard for one month. The advertisement will appear in but a single issue of any paper, and consequently will be placed before one million different newspaper readers. For \$10 we will print a twenty line advertisement in the Salt Lake City Standard for one month. The advertisement will appear in but a single issue of any paper, and consequently will be placed before one million different newspaper readers. For \$20 we will print a forty line advertisement in the Salt Lake City Standard for one month. The advertisement will appear in but a single issue of any paper, and consequently will be placed before one million different newspaper readers.

G. R. EMERY, S. H. LOVE, J. BELL, JR.

Emery, Love & Co.,

Wholesale and Retail Dealers in ILLUMINATING AND LUBRICATING OILS

MUSIC HALL, corner Third and First Streets, Salt Lake City.

Utah Central Railway.

NEW TIME CARD, MARCH 1, 1887.

PASSENGER TRAINS LEAVE SALT LAKE DAILY, AS FOLLOWS:

Going North.	Going South.
Atlantic Express at 8:00 a.m.	Missouri Express at 7:30 a.m.
Park City Express at 4:00 p.m.	Missouri Express at 4:00 p.m.

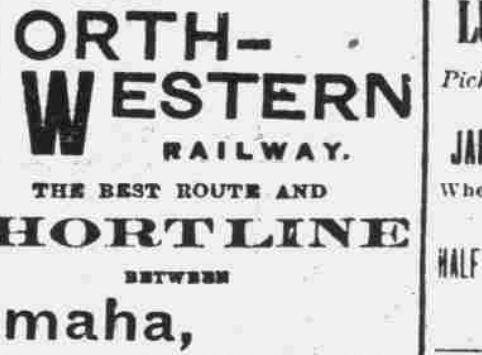
Passenger Trains Arrive in Salt Lake, daily as follows:

From North.	From South.
Pacific Express at 7:30 p.m.	Missouri Express at 7:30 p.m.
Park City Express at 11:25 a.m.	Missouri Express at 10:30 a.m.

FRANCIS COPE, General Freight and Passenger Agent.
JOHN SHARP, General Superintendent.

CORTICELLI SILK

HAVE A RECORD OF 46 YEARS SUCCESSFUL BUSINESS, Antedating and Excelling all Competitors.



CORTICELLI SPOOL SILK

STANDS PRE-EMINENT AS THE SMOOTHEST AND STRONGEST. CONSUMERS SHOULD REMEMBER THAT FLORENCE KNITTING SILK IS PEERLESS.

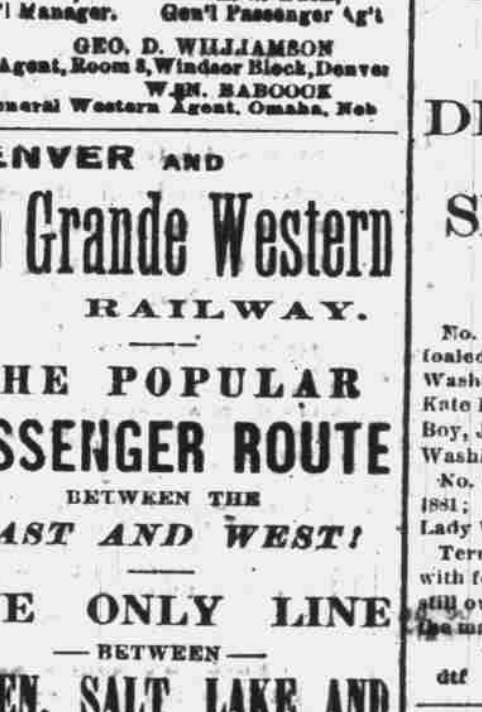
OUR ILLUSTRATED BOOK on Knitting (No. 5), will be sent on receipt of three 2-cent stamps.

SALESDROOMS FOR WEST AND SOUTH: 317 Broadway, St. Louis; 88 West Third Street, Cincinnati; 26 Camp Street, New Orleans.

C. H. SAMPSON, Agent.

A MAN

WHO IS UNACQUAINTED WITH THE GEOGRAPHY OF THIS COUNTRY, WILL SEE BY EXAMINING THIS MAP, THAT THE



CHICAGO, ROCK ISLAND & PACIFIC RY

By reason of its central position, close relation to principal lines East of Chicago and continuous lines at terminal points West, Northwest and Southwest—the only true middle link in that transcontinental system which connects the Pacific States with the Atlantic and Gulf of Mexico.

The Rock Island main line and branches include Chicago, St. Louis, St. Paul, Minneapolis, Des Moines, Iowa, and Kansas City, Mo. Branches extend to St. Joseph, Mo.; Leavenworth, Kan.; and St. Paul, Minn. The Rock Island line is the shortest route from Chicago to St. Paul, Minneapolis, and St. Joseph, Mo., and to Kansas City, Mo., and Leavenworth, Kan.

THE GREAT ROCK ISLAND ROUTE

Guarantees Speed, Comfort and Safety to those who travel over it. Its roadbed is thoroughly ballasted. Its track is of heavy steel. Its bridges are solid structures of stone and iron. Its rolling stock is perfect in construction and equipment. It has all the safety appliances that mechanical genius has invented and experience proved valuable. Its practical operation in conservative and methodical—its discipline strict and exacting. The luxury of its passenger accommodations is unequalled.

ALL EXPRESS TRAINS between Chicago and St. Paul, Minneapolis, St. Joseph, Mo., and Kansas City, Mo., are equipped with Pullman Palace Parlors and Sleeping Cars, and are provided with excellent meals and service.

THE FAMOUS ALBERT LEA ROUTE

Is the direct, favorite line between Chicago and Minneapolis and St. Paul. Over this route the Pullman Palace Parlor and Sleeping Car trains run daily to the summer resorts, picturesque localities and hunting and fishing grounds of Iowa and Minnesota. The rich wheat fields and grazing lands of interior Dakota are reached via Watertown, Minn. A short detour from Watertown, Minn., via Rapid and Grand Rapids, offers superior inducements to travelers between Minneapolis and St. Paul, and to those who wish to visit the famous Lake Superior and Lake Itasca.

All classes of passengers, especially families, ladies and children, receive from officials and conductors the most courteous and attentive service.

For full particulars, obtainable at all principal Ticket Offices in the United States and Canada—or any desired information, address:

W. R. GABLE, Gen'l Agent, Chicago.
E. ST. JOHN, Gen'l Agent, St. Paul.
E. A. HOLBROOK, Gen'l Agent, Minneapolis.

Utah Cracker Factory

27 EAST THIRD STREET, SALT LAKE CITY.

Manufacturers of PLAIN AND FANCY CRACKERS, CAKES & JUMBLES. Guaranteed to be equal to any imported.

FOR SALE BY R. C. M. L. SALT LAKE CITY, OGDEN AND LOGAN.

Co-operative Stores and other dealers would do well to patronize these goods and introduce them to their customers.