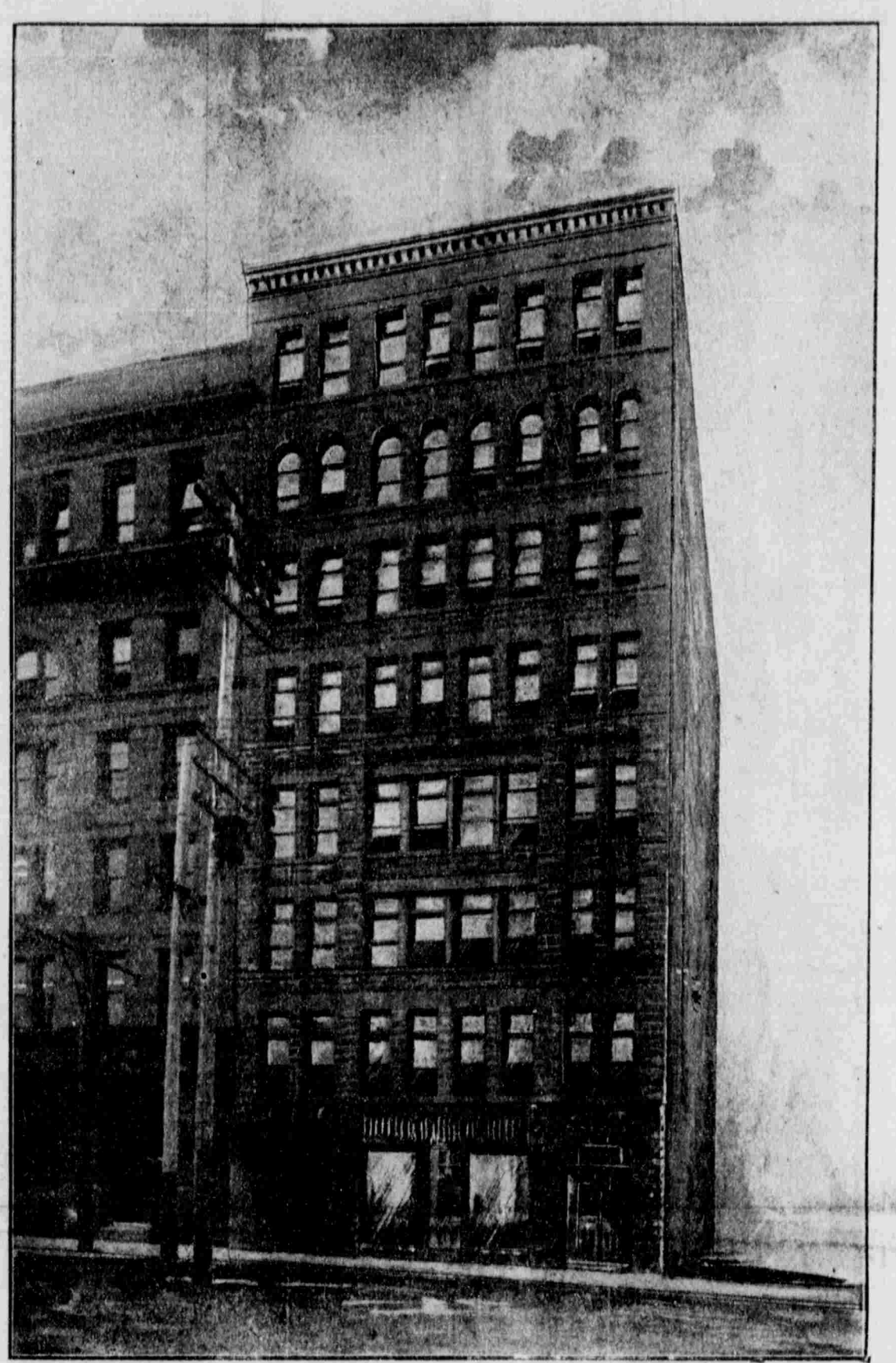


THE DESERET NEWS ANNEX.

THE FIRMS WHO BUILT IT.



THE DESERET NEWS ANNEX.
F. M. Uimer & Sons, Architects, 22 Dooly Block.

the sixth floor, will be in charge of Mr. George Buckle. Mr. W. A. Cowan will be head of the press department in the basement of the two buildings, and Mr. James Ansell will have charge of the book presses.

The Western Expanded Metal
And Fire Proofing Company

The erection of the new Deseret News building and the "Annex" thereto have given to the city and state two great fire proof structures. Their capability to withstand the visitation of the fire fiend comes of course from the material out of which they are built. Next to their splendid brown stone walls comes the expanded metal which has been used throughout them both. Builders and contractors have thoroughlyn inspected the work and pronounced it the best in this section of the intermountain west.

Expanded metal is but the beginning of fireproofing, a system that has attained the highest degree of perfection during the last decade, a system that is a guarantee against loss by fire flames; a system that means lower insurance and safety to tenants and their property. While the layman does not know, builders are aware of the fact that expanded metal is but a comparatively small part about which the more plastic materials are placed. When employed in the construction of floors, roofs and other like work, concrete is jointly used. The two materials are able to resist the ravages of fire under almost any and every condition.

When expanded metal was first used in connection with part of a fire proofing system, it was as a lathing only. In a short time, however, its general worth became to be recognized in a broader, better field, and its use continued to spread, until now, when every manner of substantial building is erected with it, covering modern business blocks and office buildings, hotels, stores, theaters, factories, depots, warehouses and even big railway bridges. So universal has it become that the leading architects and engineers are recommending it to the exclusion of other materials. More than that, the United States government has fully demonstrated its value and superiority. Architect J. Knox Taylor of the treasury department specifies its use in the construction of Federal buildings throughout the country. Acting under this custom he particularly names it for use in the Salt Lake Federal building now in course of construction on East Temple and Market streets. More than that, he specifically states that it shall be the product of the Western Expanded Metal & Fire Proofing company, the big concern that has done this class of work on the Deseret News block and "Annex."

A hundred or more of the great modern structures of the country could be named that have been built out of material furnished by the Western Expanded Metal company but that is not essential here. It is sufficient for the readers of the "News" to know that its magnificent new home has been built out of materials and methods that will and have stood the strongest test to which they can possibly be put. Small wonder, then, that the system is being investigated and praised by interested parties from far and near. During the last quarter of a century, its practicality, economy, its efficiency to stand unchallenged. All know that it is scientific; that it is all who have investigated; those who do not know are rapidly finding out here as they are elsewhere, and conceding that the expanded metal system has long since past and that it has come to take a permanent place in the architectural construction of the future. Its cost when compared with the benefits to be derived is very small. It means security and security means money and money means contentment in such cases. Certain it is that its use in the new buildings erected by the Deseret News will result in a very general employment of the material in other blocks, both public and private. At present under consideration by a number of prospective local builders of new blocks. Its value and economy are becoming more and more apparent to them as well as to the public, and according to information from Mr. Porter, local agent the business is going ahead by leaps and bounds in this section of the west as well as over the country at large. The company's headquarters are at San Francisco, and Mr. W. Backus is president and manager.

AUTOMATIC HEATING.

The Paul system is the method of heating at or below the atmosphere, this is a most desirable feature of the Paul system of heating. This is done by a scientific distribution of steam mains, a properly laying out of the work, coupled with the use of an exhausting or vacuum apparatus arranged so as to remove the air from all radiators as fast as the same shall accumulate. The unsatisfactory method of the ordinary method of steam heating, that is by pressure methods, is the fact that certain radiators in a system will not receive the steam as readily as others, owing to their distance from the boiler, the arrangement of the piping, or the resistance becoming air-bound, therefore by exhausting the air from all radiators in a building, the most remote one will receive its full quota of steam from the fact that steam is compelled to flow in to satisfy the vacuum. This will make it quite apparent to all interested in steam heating, that with the use of the vacuum system properly installed, with the piping arranged scientifically, with due consideration to the specific gravity of the steam and water of condensation, with the proper distribution of the levels, with thermostatic air valves to prevent the steam from getting into the air lines, it is possible to obtain an economy considerably greater than any other method of steam heating. In addition to the other facts it enables the circulation of steam at lower temperatures than with a pressure system, which is a very desirable feature from the fact that it gives a more agreeable heat.

The apparatus itself pertaining to the Paul system is very simple, consisting of the thermostatic air valves arranged in a proper manner, which exhausts the air from the air accumulates in the radiator, and an exhaustor, or ejector of special design, driven either by electricity, steam or water, which is placed at the power plant and which exhausts the air from the air lines. The rest of the work is purely a matter of engineering.

Our method of doing business is to make plans and specifications covering the proper method of installing our system and furnishing the apparatus that goes with the said system, and

when the plant is installed according to our plans and the apparatus attached, we will guarantee to circulate steam without pressure. Where exhaust steam is used, the system is a by-product and thrown away usually, the system is doubly advantageous, especially with compound or triple expansion engines. The writer has known cases where 40 per cent was lost by reason of back pressure which was entirely relieved by the use of our system.

The simplicity of the system commends itself to all, and the United States patent office has complimented us highly on the simplicity and yet effectiveness of the system, and granted us a sweeping process patent on our method of heating.

Trusting we have made this plain to you, and assuring you that we stand ready to assist you in every way possible, we beg to remain,

Yours very truly,
AUTOMATIC HEATING CO.

BYWATER & GROO.
The Successful Bidders on the Deseret News Annex - Cornice Work and Casings.

The advance of modern architecture has called for a similar advance in skill and methods among the artisans of this city as well as elsewhere. In no one line is this transformation more noticeable than in that branch of the building business, which calls for tin, copper and sheet iron work. Where formerly the old fashioned, cumbersome and dangerous wooden cornices were used, today one sees marvels of architectural skill and beauty. Few people who have not been to some extent connected with the contracting or building business can appreciate the importance of this one branch of the trade. In a building such as the Deseret News and the recently completed Annex, the work in this line alone amounted to several thousand dollars, and has given to the building one of its most attractive features. Full particulars of the special work executed upon the Annex will be found in the illustrated portion of these columns, it is the purpose of this article to present to the readers of the "News" the gentlemen who were the successful contractors in this particular work upon the Annex.

The firm of Bywater & Groo, with offices and shops at 24 and 26 Richards street, is so well known to the contracting and building public that the following paragraphs would appear superfluous, but to intending builders and to the readers of the "News" in various parts of the city and state we feel sure they will prove of interest. Messrs. Bywater & Groo have been associated in business in this city for the past four years, until recently having been located in shops on West Temple street, the increasing demands of their business made it imperative for them to seek larger quarters, which they secured at their present address, within a stone's throw of the "News" Annex. Although the firm have only been associated for four years, the individual members of it, H. J. Bywater and J. L. Groo, are very extensively known throughout the city of Churches, and have been a resident of this city for the past twenty years, during which time he has made an extensive circle of business friends and acquaintances. He learned his trade in his native town, the "City of Churches," Brooklyn, N. Y., and shortly after, seeking more fertile fields than those of

ferred by the east came west, and to Salt Lake City.

Mr. J. L. Groo, is a native son, having been born and raised in this city and state. Both gentlemen give their personal attention to all contracts assumed by them, and employ the most skilled labor obtainable. Some idea of the extent of their business may be gained from the fact that they employ on an average, 10 men. Among the most recently completed work from their shops we call special attention to the cornice work and roofing and skylighting on the Memorial Hall. It has excited universal attention and admiration, combining as it does the artistic effect with an air of substantiality. The elevator skylight on the Annex, the cornice work over the main entrance, as well as the particular work of covering all the eaves on the sides and back of the Annex with a covering of galvanized iron, thus making them fire-proof.

The firm do not confine their efforts to Salt Lake City alone, but have at various times taken contracts in other parts of the state, for galvanized iron cornice, skylights, guttering, roofing and in fact all kinds of jobbing work. They are practical tin, copper and sheet iron workers, and are sole agents for the celebrated Fox furnaces, many of which are installed in the handsome homes of this city. By their strict attention to those business principles which command success, the gentlemen have won an enviable reputation for honesty and fair dealing. Their acceptance of a contract is a practical guarantee of its fulfillment.

D. MIDGLEY & CO.

In connection with the building operations in this city that are destined to change the appearance of Salt Lake from an overgrown country town to that of a metropolitan city, it has been necessary for our artisans and skilled mechanics to keep pace with the pace in sanitary plumbing. Be it said to their credit, that when the occasion has arisen they have ever proved equal to it. It would undoubtedly be a source of surprise to the majority of people in this city and state to learn that no more modern structures are erected anywhere than that now being completed for the Deseret News. When the contract for the plumbing and steam-fitting was awarded to the above firm they proved that they could handle it to the entire satisfaction of the management. They have in fact, done the best work in this line, and more of it than any other firm in the city.

A complete illustrated description of the Deseret News "Annex" and the many novel features in connection with it will be found elsewhere in these columns, particular attention being called to the system of steam heating, as installed by the firm of D. Midgley & Co. It will, however, be quite appropriate to give space to a passing mention of the system at this point. The steam provided for heating purposes is furnished from two 30 horsepower boilers located in the basement of the main building, and all pipes leading from there to the "Annex" are protected with an asbestos covering. Radiators have been placed in every room and at proper distances throughout the halls of the building. It is interesting to note in this particular that this is the latest approved system of steam heating, and is what is known as the vacuum system. All air is drawn from the radiators with the fact that five minutes later the building is heat-

ed. Another feature that is among the latest devices yet used is the thermostat, which regulates the temperature of the room in which it is installed. It is most simple to operate, being almost automatic; for instance, if the temperature of the room is desired at 70 degrees, the occupant sets the thermostat at that figure and the moment the heat reaches the required degree the heat is automatically shut off, rising again as the room cools off. In this manner the temperature of the various offices can be regulated by the occupants without incurring the slightest inconvenience to their next door neighbor.

The system of plumbing is also equally as modern and up-to-date as that of the steam heating. The Durham system of plumbing which was installed in the main building proved so satisfactory that the same system is in use in the Annex. Mr. Midgley has provided the famous "Kenney Flushometer" for all the closets and toilets. While every one of the 75 wash bowls are enameled with open nickel plating work. The work is of the latest approved type and all the sinks, closets, nickel plated traps and cocks were made to order by the most successful eastern supply houses and factories.

D. Midgley & Co. have been established in this city for over a quarter of a century, during which time they have built up an extended trade and have handled contracts on many of the most imposing buildings in the city. Among the pieces of work most recently completed, it is permissible to mention the following, the plumbing in the new Memorial hall of the L. D. University. The heating in the main college building and also in Barratt hall of the same institution. The firm also enjoyed the distinction of having "fixed" similar contracts upon the magnificent Temple.

The firm was originally founded away back in the early '70's by the father of the present proprietor, who was a skilled artisan and under his supervision Mr. D. Midgley earned his trade and has since been intimately associated with him in the conduct of the business. Five years ago he inaugurated a change in the management, and since that date the firm has been known under the title of D. Midgley & Co.

THE SALT LAKE BUILDING & MANUFACTURING CO.

A Brief Recapit of their Connection With the Completion of the Deseret News Annex.

The average uninitiated person who thinks of a building as being "fire-proof" such as the recently completed "News Annex," has the impression that all the materials that enter into its construction must necessarily be either masonry or iron work. Such an impression is, however, erroneous. While the building is fire-proof in the strictest sense of the word, still there is immense quantities of woodwork in it. This is rendered fireproof by a covering of metal. Among the 30 contractors employed upon the work of constructing the only nine story building between Duway and the Pacific coast, the new home of the official organ of the Church, none have filled their contracts with more promptness, or lived up to the specifications of the contract closer than the above firm.

Management of the "Annex," in deciding upon contractors for this par-

ticular line of work, acted wisely in their selection. The members of this firm had been identified with the construction of the main building, completed a year ago, and more recently finished the handsome addition to the Z. C. M. I. So, by equipment and facilities they were fully equal to handling the contract for the interior finish of the immense annex. While the work they accomplished is reviewed in these columns in connection with the illustration of the building, it will be interesting to note in this connection the special features that command one's attention.

Of the eight stories of the annex, there is a cement or concrete floor, over which the firm have laid a superior grade of hard maple flooring, specially made in Minneapolis for the annex. The building are over 350 windows, the casings of which were made at the mills of the Salt Lake Building & Manufacturing Co's plant. All of these sash and frames are covered with galvanized iron to render them fireproof. The glass for these 350 windows was furnished by the same firm and consists of a superior quality double strength, suitable for the purpose. All of this work was finished at their mill, 20 to 40 North Second West street, this city, and in order to supply the immense quantities of material used it takes a large and complete office description of which will prove most interesting at this time.

The plant is located within easy access to the railroads and thus has the advantages of excellent shipping facilities. The equipment is modern and one of the most complete in the west. The latest and most approved patterns of machinery are in use in every department, and no expense has been spared by the firm in having their mills equal to the demands of this city and state. They realize the necessity of having only the best and most seasoned material to work with on interior finishing and with this end in view they have but recently completed the addition to their dry kilns which will more than double the former large capacity. As this branch of their business has increased with gratifying rapidity they have also been obliged to add new equipment to their stock of interior finishing machinery, over \$1,500 having recently been expended in this direction alone, with the result that the firm is amply able to handle anything in their line from the most difficult and costly work to that of a cottage. That their facilities are appreciated by the building public can best be evidenced when it is known that at the present date they have over \$100,000 worth of work on hand and contracted for. Among the contracts, we may mention that which calls for all the hardwood finish of the Keith building, including doors, frames, base, etc. All of which are to be furnished in solid oak. Some idea of the extent of the business and the disbursements of the firm may be gained from a glance at their payroll, which during the past season has averaged from \$1,000 to \$12,000 a week. They worked 25 to 30 men upon the annex, and having ample capital to meet all demands, and the ability and skill to carry out all contracts assumed, they are better prepared than ever to furnish estimates and figures upon all classes of work.

IOLA PORTLAND CEMENT

The Deseret News Annex, like the main building erected last year, is of modern construction, strictly so, and this is shown in no more conspicuous manner than in the great side walls. They look like great slabs of stone with here and there a small opening where the windows admit light.

The fact is these walls are built almost wholly of "Iola" Portland cement concrete interwoven with a steel skeleton frame work. As the work has progressed and one story after another has been lifted toward the roof many have wondered at this most modern method of construction.

Iola Portland cement was used in getting the first foundation stones. "Iola" Portland cement is the concrete of the concrete floors. "Iola" Portland cement forms the walls and even the roof covering the whole structure is made everlasting by the use of this highest grade of structural cement.

Some who have not learned the real value of Portland cement as a building material have questioned this kind of construction, but they have reckoned without knowledge for there is no safer method of building.

The best architects and engineers in the world recognize the importance of Portland cement and realize that steel and cement concrete present the greatest possibilities in heavy, strong, enduring construction.

The prime essential is kind and quality of cement used. The builders of the annex would not experiment. Different kinds of Portland were considered and investigated. Exhaustive tests were made with the result that "Iola" was chosen on account of its uniformity and great strength.

Users of cement in Utah and the west should know that there is much variation in quality in the various brands of Portland cement. Where Portland cement is required the best should be used.

"Iola" Portland cement has been tested and used by the engineering departments of both Salt Lake City and Ogden. The records will verify the statement that no cement, American or imported, has made such satisfactory showing as "Iola." Great strength and remarkable uniformity.

Foundation, street pavements, sewers, drainage, floors, walls, partitions, dams, reservoirs, culverts, bridges are most perfectly and permanently made where "Iola" Portland cement is used. The United States government uses only the best materials in the erection of postoffice buildings. "Iola" is being used by Uncle Samuel at Salt Lake City, Cheyenne, Denver, (the mint) and at many more eastern points.

The manufacture of "Iola" has been reduced to a mathematical certainty and is scientifically right. The process is the most perfect ever used. No cement has met with such prompt favor in the west as "Iola," and where high class work is desired it should be used. Cost is not excessive and quality is paragon.

Sold by all dealers in Utah and surrounding States, exclusive agents, Omaha, Neb. C. F. Porter, Salt Lake City, agent.

ASHTON BROTHERS.
Stone and Masonry Contractors on The News Annex - Office 207 Deseret News Building.

Future visitors to Salt Lake City will be shown with pride the Deseret News Annex, by residents of this historic spot, and in it they will see the embodiment of architectural perfection, and the first nine story building erected between the Rocky mountain eastern slope and the waters of the

Pacific ocean. We feel safe in asserting that no more modern structure are erected in this country or its neighbors. New York City, itself, than the new home of the mechanical department of the Deseret News. It has even our desire to give credit where credit is due in preparing these notes of the materials used in the building, which included the brown stone front.

While the building is minutely described and illustrated in another portion of this article, it may prove of interest to state in this connection that the brown stone used by Ashton Brothers in carrying out building to the eighth story, was quarried at the famous Thistle quarries located about two miles south of Castle Springs on the Rio Grande railway. The quality of the stone produced in these quarries is a most excellent brown stone, claimed by many to be equal to the famous brown stone of the Vermont hills, and indeed if we were to judge we should say it was superior to them. The quarries steam derricks with a lifting capacity of many tons are installed and greatly facilitate the work of loading the rock. The demand for the stone is so great that Thistle quarries have been unable to meet all orders that have been placed. The firm of Ashton Brothers has successfully finished the work undertaken upon the annex, but this was what management had reason to expect when the contract, as the firm has had an experience of over 20 years in the contracting and building business in this city, during which time they have secured much to the degree of the Lake City's imposing buildings. This year they erected over 15 cottages and larger residences besides many important business blocks. Among the most recently completed buildings, they are making mention of the immense warehouse at the corner of Third West and Seventh South streets occupied by the Consolidated Wagon and Machine company of this city. This firm has also been instrumental in the erection of many of the power plants in our state and adjoining territory. Their contracts during the year which has passed amounted to over \$100,000, and included everything from a humble cottage to magnificent buildings.

In addition to general contracting business Ashton Brothers are interested in the well known firm Ashton, Whyte and Skillern Co., successors to Watson Brothers, who are contractors. This firm besides saving the stone used in the original Deseret News building has furnished stone used in the Latter-day Saints' college, Barratt hall and University of Utah building. They are at present busy engaged in milling at their yard, corner South Temple and Sixth West streets, stone for the Minnesota home on the east bench and the beautiful Catholic cathedral on east Brigham street, which is the equal of the largest stone buildings in our state. This firm has also begun a contract for the construction of the Federal building on South Main street, which is the equal of their large plant enable them to execute the largest kind of stone contracts.

Mr. Edward T. Ashton, of Ashton Brothers, is also president of the Ashton Fire Brick and Tile company, which promises to be one of the important manufacturing establishments of our progressive state.

The firm of Ashton Brothers is so well and favorably known in the city and state, especially in the contracting and trade circles, that a description of the firm and its attainments would appear unnecessary, but many of our readers are not familiar with the details and the men who accomplish the details in the completion of an immense office building. Mr. Edward T. Ashton has been engaged in his present line of business for over 20 years and for the past 18 years his brother, George R. Ashton, has been associated with him. Both gentlemen are master mechanics, practical builders. The success they have attained is clearly the reward of conscientious application to business and an adherence to the principles which are so essential to the successful conduct of any enterprise.

Modern Methods in Excavating.

It will surprise many, who are not familiar with the numerous details of the contracting and building business, to learn of the number of firms employed in the construction of so gigantic and modern building as the nine story Annex of the Deseret News. To the casual observer the Annex would appear as an eight story building, but there are really nine and the man who made the ninth story is Hugh Watson. It is interesting to note in this connection that although Mr. Watson has in his own peculiar way, added a story to most of the modern buildings in this city, this is the first "ninth" story which he has added. It is also worthy of note that the Annex is the first nine story building to be erected between Denver and the Pacific coast.

As soon as the plans and specifications were completed by the designing architect, Mr. Watson was on the ground with his men and teams. The amount of dirt moved in the excavation for the Annex and the main building was immense, but the job was completed in a remarkably short time. This is due to the fact that Mr. Watson has in his own peculiar way, added a story to most of the modern buildings in this city, this is the first "ninth" story which he has added. It is also worthy of note that the Annex is the first nine story building to be erected between Denver and the Pacific coast.

As soon as the plans and specifications were completed by the designing architect, Mr. Watson was on the ground with his men and teams. The amount of dirt moved in the excavation for the Annex and the main building was immense, but the job was completed in a remarkably short time. This is due to the fact that Mr. Watson has in his own peculiar way, added a story to most of the modern buildings in this city, this is the first "ninth" story which he has added. It is also worthy of note that the Annex is the first nine story building to be erected between Denver and the Pacific coast.

As soon as the plans and specifications were completed by the designing architect, Mr. Watson was on the ground with his men and teams. The amount of dirt moved in the excavation for the Annex and the main building was immense, but the job was completed in a remarkably short time. This is due to the fact that Mr. Watson has in his own peculiar way, added a story to most of the modern buildings in this city, this is the first "ninth" story which he has added. It is also worthy of note that the Annex is the first nine story building to be erected between Denver and the Pacific coast.

As soon as the plans and specifications were completed by the designing architect, Mr. Watson was on the ground with his men and teams. The amount of dirt moved in the excavation for the Annex and the main building was immense, but the job was completed in a remarkably short time. This is due to the fact that Mr. Watson has in his own peculiar way, added a story to most of the modern buildings in this city, this is the first "ninth" story which he has added. It is also worthy of note that the Annex is the first nine story building to be erected between Denver and the Pacific coast.

As soon as the plans and specifications were completed by the designing architect, Mr. Watson was on the ground with his men and teams. The amount of dirt moved in the excavation for the Annex and the main building was immense, but the job was completed in a remarkably short time. This is due to the fact that Mr. Watson has in his own peculiar way, added a story to most of the modern buildings in this city, this is the first "ninth" story which he has added. It is also worthy of note that the Annex is the first nine story building to be erected between Denver and the Pacific coast.