

NEPHI, THE LITTLE CHICAGO OF CENTRAL UTAH



MAIN STREET LOOKING NORTH, MOUNT NEBO IN THE DISTANCE.

MAYOR WM. H. PETTEGREW.

MAIN STREET LOOKING SOUTH.



Nephi Central School



Residence of State Senator Geo. C. Whitmore



Residence of Alfred Lunt



Oster and Allen Harness Shop



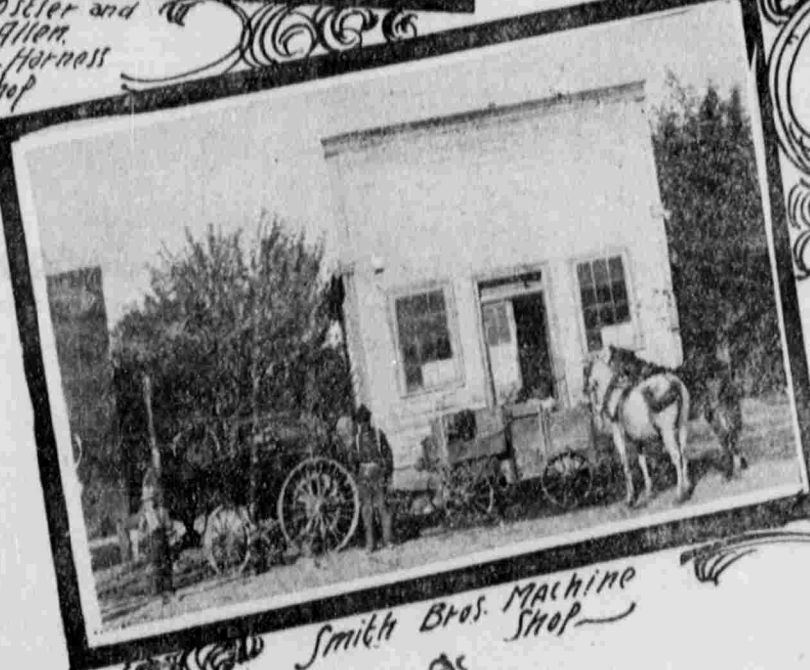
Court House



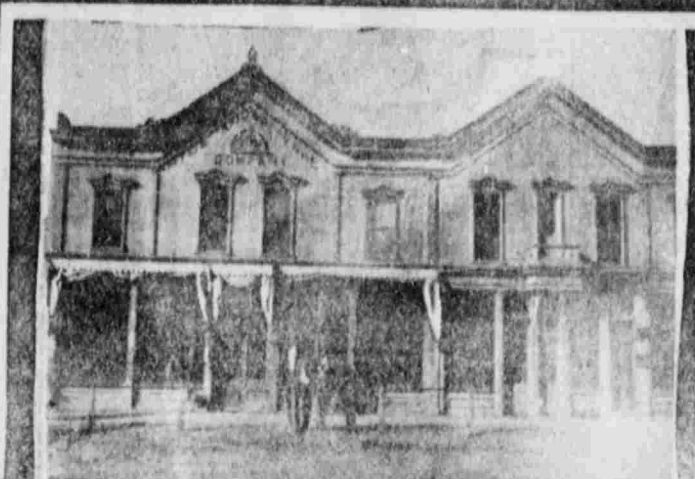
Forest Hotel



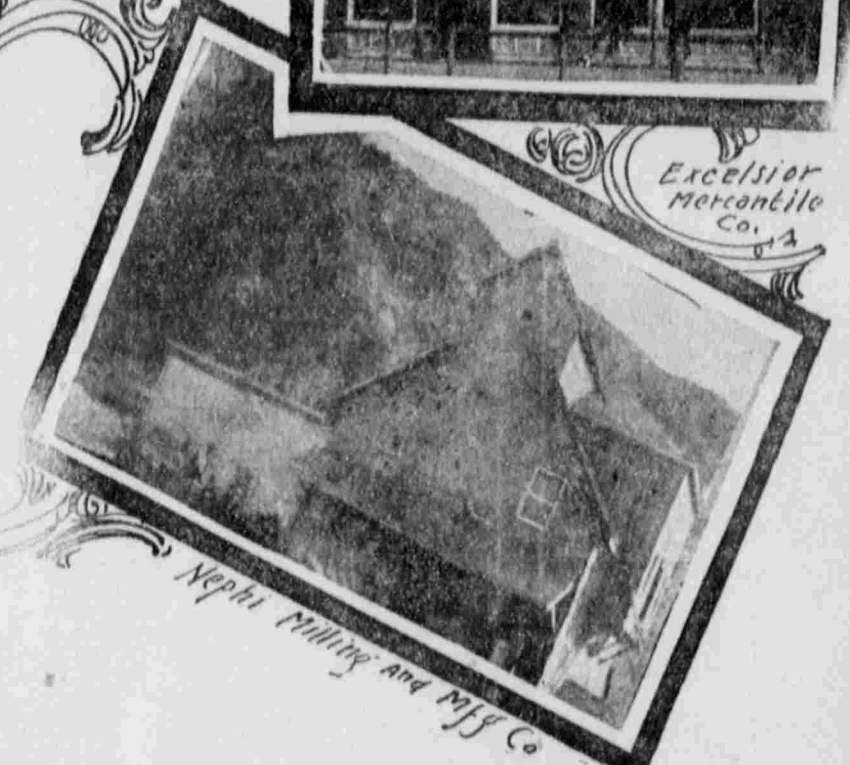
Excelsior Mercantile Co.



Smith Bros. Machine Shop



Hydes Store



Nephi Milling and Bfg Co.

NESTLING at the foot of Mt. Nebo, which, with its lofty summit adorned with a crown of perpetual snow, stands as king among the Giants of the Rocky mountains, lies Nephi, the "Little Chicago" of Central Utah and home of about 3,000 of her most industrious and patriotic citizens; the county seat of Juab county, and most centrally located city in the state.

Looking east we behold streams of purest crystal waters dashing down the mountain sides to mingle themselves in the canyon bottom, there forming "Salt Creek," and rushing on to the valley below, but pausing in its course long enough to turn the wheels, first of

THE ELECTRIC POWER PLANT
Installed at a cost of about \$20,000, owned by the city, located about five miles below, and which furnishes light, second to none in quality in the world, and quantity sufficient to illuminate the streets and light up business houses and residences of a city at least double the size of Nephi. Next of the plant of

THE NEPHI PLASTER CO.
located a little above the mouth of Salt Creek canyon, at the base of a mountain of gypsum, which it is gradually converting into plaster of the highest grade and supplying an enormous demand from all parts of the west and northwest. A complete description of this company's plant, and something of its workings will be found under a separate heading on another part of this page. Once more does the stream pause, this time to set in motion the machinery of

THE NEPHI ROLLER MILL,
located just at the mouth of the canyon, upon an elevation overlooking the city and surrounding valley. The friend

of the farmer and pride of all. Happy in the distinction of being the only mill in Utah equipped with the latest and most perfect system of modern milling machinery. This company is the first, and so far the only one in the west, to install "Wave Rollers" machines which during the four years they have been on the market, have revolutionized the milling industry in the east. It is claimed for them that they are as great an improvement over the reel and sifter machines now in use in all other western mills, as was the roller process over the old Burr mill. Under the direction of Manager T. C. Winn the Nephi mill is run to its full capacity of 75 bbls per day, turning out three cars of flour per week, and finds a ready market for all its product.

Supplying the residents with water for culinary and domestic purposes is a system of

WATER WORKS
owned and controlled by the city. Some is fed by springs located in the canyon about five miles east of town, and was installed at a cost of \$35,000. The pressure in town is sufficient to throw water from a half inch nozzle over the top of the highest building, and has been the means on numerous occasions of saving the city from disastrous fires, as in connection with the water system the city also has a well equipped

VOLUNTEER FIRE DEPARTMENT.
and it is a remarkable fact that although, since the organization of the volunteer firemen, some ten years ago, fire has started in nearly every business house in town, it has on every occasion been extinguished before any serious damage was done.

PUBLIC PARKS.
Nephi has three public parks, one in the southeast, one in the center, and one in the northern part of the city, all abundantly supplied with trees and shrubs, so that the old may sit in the shade and be entertained by the amusements provided for the recrea-

tion of the young. The natural mountain scenery around Nephi is of the most beautiful in the world.

NEPHI CITY SCHOOLS.
The city has a school population of nearly 800 children. It supports besides its 12 district schools a high school, which at this writing is under the able management of Fred W. Merrill. It is one of the oldest high schools in the state and has been loyally supported by the enterprising citizens of the above named city, while the school boards that have served since its establishment are to be commended for having spared no efforts or pains in securing the most proficient teachers

available, as instructors. As a result the school has steadily extended its usefulness and proficiency until today able and proficient corps of teachers it ranks among the best.

Now have the district schools been organized by the high school, but on the contrary they have kept pace with the advancement and progress of the best and most modern institutions of their kind. The people have been alive to the interests of free education and have contributed liberally of their means for the erection, furnishing and equipping of suitable school houses which are modern and up to date, well heated, well lighted and well ventilated. Oliver Christian the present county

superintendent, is principal of the district schools and is supported by an able and efficient corps of teachers well qualified for their responsible duties.

The district owns and supports three school buildings of which the accompanying cut represents the largest. This is in every way a modern building. It has eight regular rooms, commodious halls and stairways, two recitation rooms and a library room well stocked with books and reading matter, suitable for reference and school reading. The citizens of Nephi are justly proud of their schools. A feeling of sympathy and co-operation exists between parents and teachers, and

this in no small measure accounts for the present splendid condition of all the schools.

CHURCHES.
There are three churches, the Latter-day Saints, the Presbyterians, and the Methodists, represented in Nephi, each having its own church building, and in addition to these, is also the Juab stake tabernacle, and two Relief society buildings, used for religious purposes.

PUBLIC BUILDINGS AND BUSINESS HOUSES.

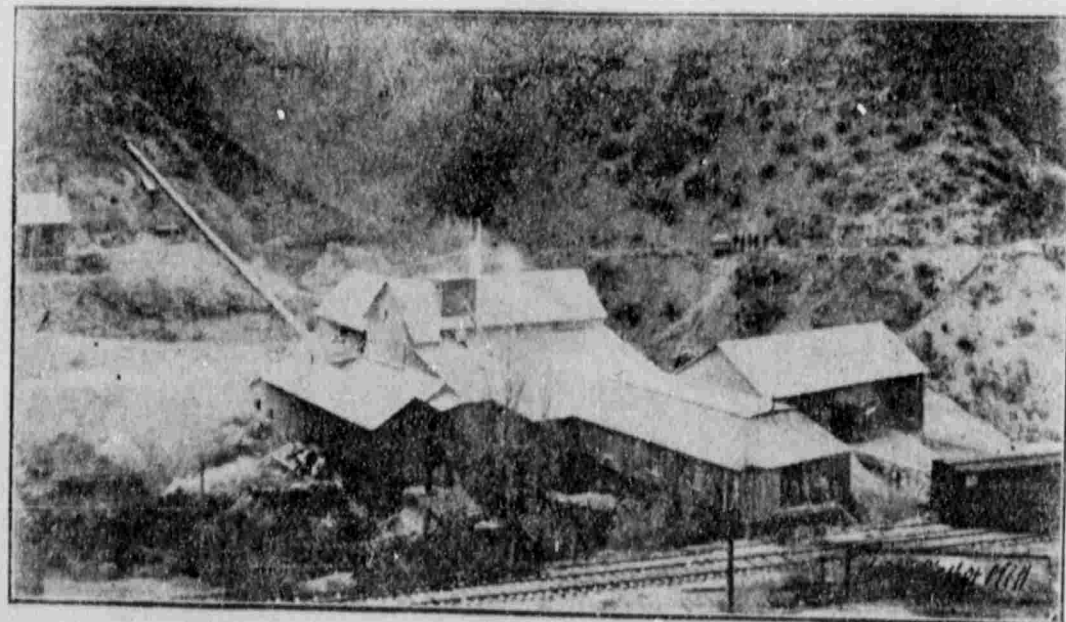
The county court house, located at Nephi, is the best and most convenient building of its kind in the state, outside of Salt Lake. It is built on the corner of Main and Center, the two principal streets of the city, and is surrounded with a beautiful lawn, shaded by trees and dotted with shrubbery and flowers. Across the street to the north is the Hyde & Whitmore store, the oldest mercantile house in the city. This concern carries a mammoth stock of general merchandise, and conducts a strictly up-to-date wholesale and retail business. Still north of them in the same building is the office of the Juab County Abstract company and the First National Bank of Nephi, and adjoining them the public office of the Rocky Mountain Bell Telephone company and on the east side of Main street, a block north, can be seen the Excelsior Mercantile company's building, a two story brick block. This is a modern store building in every particular and is occupied by the company whose name it bears, as a general merchandise store. They carry a complete and well assorted stock and do an extensive wholesale, jobbing and retail business.

Located one block north and one west of the Excelsior store is the lumber yards and planing mill of Grace Brown, contractors and builders. Their mill is equipped with all the latest machinery, and their location here, with branch yards at Milford enables them to compete successfully for a large proportion of the contracting and building

business of southern Utah. Their specialty is building school and court-houses, and they have built 75 per cent of all that class of buildings erected south of Nephi during the past 10 years.

At the north edge of town we find the Nephi creamery, celebrated in central and southern Utah for the superior quality of its butter and cheese, and doing a considerable jobbing business in poultry and eggs. The firm of Oster & Allen, harness makers and dealers in leather goods, implements, wagons, etc., is located on main street on the same block as and four doors south of the courthouse. This firm does an extensive business in their line, both in the city and the surrounding districts. Across the east and a little south of the road east and a little south of the Oster & Allen, are the offices and printing rooms of the Nephi Record, equipped with all necessary machinery and appliances for carrying on a job printing and book binding business. In addition to doing all kinds of fancy job printing and book binding the company makes a specialty of furnishing blank books for city and county records and supplying election blanks and all other legal blanks used by attorneys and notary publics.

Other business houses are C. Foote & Sons, general merchandise; Cooper, Pyper & Co., hardware; Frank Sell, furniture; Nephi Opera House, Smith, Bros., machine shops; B. H. Sparks, confectionery; Chase Bros., meat market; Tanner & Slaughter, butchers; Boston Hide company, dealers in hides and pelts; T. B. Foote, candy store; Mrs. R. B. Smith, photographer; Lunt's pharmacy, drugs and notions; W. T. Benn, jeweler and watchmaker, two millinery stores, city barber shop, two restaurants, one conducted by R. Hawkins, the other by Mrs. Gus Hendrick. Three hotels, the Forrest House, the Union Hotel and the Nephi House; two blacksmith shops, two aparies, supplying the neighboring towns and surrounding counties with 30 to 50 tons of honey annually; three livery and feed



NEPHI PLASTER MILL.