

MINING, BUSINESS AND STOCKS.

MINING STOCK MARKET ACTIVE.

Opening Session This Morning Resulted in Big Business.

PRICES MUCH IMPROVED.

Immense Curb Trading Was a Feature—Majority in Heavy Demand—And Higher.

On the mining exchange this morning transactions involving \$3,885 shares and \$25,298 were recorded. The session was characterized by a very heavy demand for stocks on a rising market. Trading generally was for outside accounts and the market displayed great strength. A feature of the session was the very active demand for Majestic, which traded to the extent of 1,100 shares at 2.95 and 3.00.

The Park City issues were all on good demand and held at very firm figures. Creole with heavy buying was skyrocketed to 65 on news that some important move in the company's affairs had been consummated.

The session closed with the market strong and with the following business recorded:

LISTED STOCKS.		Bid.	Asked.
Ajax	29 1/2	40 1/2	
Alcoa	15	15 1/2	
Alumina	3.00	3.50	
Carroll	20 1/2	20 3/4	
Creole	60	65	
Daily	1.95	2.00	
Daily West	50.00	50 1/4	
Dexter	25 1/2	26	
Eagle and Elbow	90 1/2	91	
Grand Central	5.65	5.90	
Ingot	11 1/4	11 1/2	
Lower Mammoth	1.44 1/2	1.45 1/2	
Mammoth	1.88	1.90	
May Day	23	23 1/2	
Northern Light	3	4	
Ontario	8.50	10.00	
Park City	75	75 1/2	
Silver King	73.00	80.00	
Silver Shield	16 1/2	17 1/2	
Star Con.	90	110	
Swansea	20 1/2	21	
South Swansea	22 1/2	26	
Shower Con.	30	35	
U. S. Con.	32 1/2	34	
United Summit	50	55	
Utah	55	56	

UNLISTED STOCKS.		Bid.	Asked.
Ben Butler	13 1/2	14	
California	45 1/2	45 3/4	
Emerald	2 1/2	2 3/4	
Golden Eagle	1	1 1/4	
Joe Bowers	1 1/2	1 3/4	
Little Chief	4	5	
Manhattan	15 1/2	16	
Martha Washington	5 1/2	5 3/4	
Richmond Ann.	5	5 1/2	
Silver	22 1/2	23 1/2	
Victor	24 1/2	25 1/2	
West Morning Glory	67	68	
Yankee Con.	2.38	2.50	

MORNING SALES.

Ajax—100 at 40 1/2.

Con. Mercur—100 at 2.00 1/2; 25 at 2.00.

Total 125.

Creole—100 at 60; 100 at 65; 100 at 61; 100 at 52 1/2; 100 at 61; 100 at 53 1/2; 400 at 60; 100 at 63 1/2.

Ingot—5,500 at 11 1/4.

Lower Mammoth—200 at 1.44 1/2; 600 at 1.45.

Mammoth—100 at 1.90; 100 at 1.85; 100 at 1.83.

Total 200.

May Day—3,000 at 23 1/2; 1,000 at 23 1/4.

Total 4,000.

Petro—500 at 10.

California—200 at 45; 4,100 at 46; 3,100 at 45 1/2; 800 at 45 1/2; 2,500 at 45 1/2—S. 30; 500 at 45—S. 60. Total 11,200.

Century—500 at 1.17 1/2—S. 30; 200 at 1.16; 200 at 1.15. Total 900.

Joe Bowers—4,000 at 2.

Little Chief—1,000 at 4 1/2.

Martha Washington—2,000 at 5 1/2; 2,000 at 4 1/2—S. 20.

Petro—1,000 at 22 1/2.

Vabash—100 at 2.37; 200 at 2.36; 100 at 2.38; 100 at 2.39. Total 500.

West Morning Glory—1,000 at 1.4.

Rankin—200 at 66 1/2—S. 30; 100 at 66 1/2—S. 60; 600 at 67—S. 60; 100 at 68—S. 60. Total 1,000.

OPEN BOARD.

200 Creole at 60.

400 Creole at 61.

300 Creole at 65.

200 Lower Mammoth at 1.44 1/2.

100 Lower Mammoth at 1.46—S. 30.

500 California at 45 1/2.

1,000 California at 45 1/2.

1,000 California at 45.

300 La Reine at 7 1/2.

200 Martha Washington at 5 1/2.

750 Martha Washington at 6 1/2.

200 Petro at 10.

500 Tetro at 22 1/2.

125 Daily Judge at 11.90.

100 Daily Judge at 11.97 1/2.

200 Comstock at 1.22.

100 Comstock at 1.22 1/2.

400 Majestic at 2.90.

750 Majestic at 2.95.

1,000 New York at 52.

1,500 New York at 53.

1,600 New York at 53—S. 80.

1,000 New York at 54.

TOTALS.

Regular call . . . 38,325 shares, \$13,323.75

Open board . . . 15,360 shares, \$1,944.50

N. A. Page, Stock Broker.

Loans money on stocks at bank rates. Room 26, Walker Bank building.

WILL WORK THIS WINTER.

Mountain Lake Company Preparing To Continue Operations.

David Evans and Senator Joseph L. Rawlins returned from Brighton's yesterday, after visiting the Mountain Lake and Great Eastern properties.

Mr. Evans when seen today stated that all preparations are now being made to keep a force of men at work all winter on the Mountain Lake group which is opening up splendidly into a big low grade copper proposition.

Mr. Evans stated that he snowed very heavily at Brighton's Saturday and that the head of Big Cottonwood will soon be snowbound.

THE MAJESTIC OPERATIONS.

Ore Showing in O. K. Lower Levels Marvelous.

SMELTER MATERIAL COME.

President Lewis and Samuel Newhouse in New York—Former Returns Next Week.

A telegram received from New York today indicates that President A. B. Lewis of the Majestic company will be on his homeward trip within the week, accompanying a party of Majestic stockholders. It is also learned that Samuel Newhouse has arrived in New York and will leave for the west within two weeks.

Operations at the properties of the big company have been progressing favorably during the absence of Mr. Lewis and the Beaver News has the following resume of recent developments:

Although the Majestic management is saying very little about the condition of the O. K. mine just at present, it leaks out that some wonderful discoveries are being made in the lower workings. Parties who have recently visited the 400 level declare that the entire workings are now in vein material that is literally shot full of native copper. The mineral occurs in wire form and small nuggets and at first sight would be pronounced gold, giving the rock an appearance of glittering richness.

Supt. Osborne, when questioned concerning these developments, admitted that native copper was being found in increasing quantity, but as it is not his policy to do much talking about the properties under his charge he will not be inclined to go into details. It is certain, however, that the O. K. promises to develop a bonanza ore body that will surpass that discovered in the upper workings.

The forces at the other Majestic properties are being steadily increased, although operations will not be in full swing until after the arrival of Mgr. Farish, who is scheduled to reach Utah on the 28th. Six men were put to work on the Old Hickory last week, but that this force will be greatly increased is indicated by the size of the new bunk house, which will accommodate 40 men. A double compartment working shaft has been started at the Vicksburg. This property shows immense bodies of all kinds of ore, including a gold-bearing iron that will be just the thing needed for smelter fuel.

Thirty men and ten teams were at work getting out material for the smelter building last week and the force is being increased. The boarding and bunk houses and office building are completed and over 200 perch of stone for the foundation has been delivered by Contractor Fotheringham. The foundation will be 12 feet high in places and the superstructure will be of iron and steel.

DAILY JUDGE OPERATIONS.

Mr. J. M. Callow, the expert metallurgist, came down from Park City last evening and will return tomorrow. He is carrying on a series of experiments in connection with Mgr. Broughall of the Daily Judge mill, on a shaking screen for screening the waste of the Willey tables to be used in the remodeled mill. He reports the shaking screen, which is his own invention, to be operating very satisfactorily and with every indication of being a great improvement on hydraulic sizing. Mr. Callow will remain at the Daily Judge for a week or ten days.

Reports from the mine are to the effect that Supt. McSorley is developing it into a wonderfully large and rich property.

IRON COUNTY NOTES.

Discontinuance of Operations Near Cedar City Mentioned.

In the last issue of the Cedar City Record the following paragraph appeared:

"Last Saturday, the 13th inst., the community was considerably surprised by the sudden closing down of the development work that was being done by Kimberley and Co. The company deposits near this city. No one seems to know the reason for this action. Mr. Kimberley, the company's representative, when asked about the matter, professed to know no more about it than anybody else. The gentleman said a telegram had come directing him to stop operations, and since his machinery. It is said the company's ones that it is no fault of the iron, either in quality or quantity, but that the matter of title to some of the property owned by the company was buying was in dispute."

CREOLE AFFAIRS.

President Evans Says that Operations Will Soon Commence.

When interviewed today R. J. Evans, president of the Creole Mining company in Park City, stated that the company will very soon commence to develop the property and that work will proceed systematically and energetically.

Regarding the report that the control of the company has been sold to interested parties, Mr. Evans says nothing other than that strong people are now associated with him and something will be announced in a few days.

ANNE LAURIE DIVIDEND.

Gold Mountain Company Will Commence With \$4,000 in October.

It was stated today that Secy. Ball of the Anne Laurie is in the city planning dividend checks and books and other equipment in that line.

The big company will, it is stated positively, commence the payment of dividends on Oct. 1.

The initial dividend will be in the sum of \$40,000, or \$2 per share.

Manager Rader on his last visit here announced that the company is earning over \$50,000 monthly, while the mill treats nearly 10,000 tons of ore every four weeks.

MINING NOTES.

Manager Charles Read of the Mackintosh interests has returned from Idaho. The Tonopah owners have nine car-

STOCKS WERE OFFERED FREELY.

Was Much Apprehension that Loans Would be Contracted.

SUPPORTING ORDERS OUT.

Had Effect to Check Decline—Call Money Climbed, Prices Wavered and Entire List Declined.

New York, Sept. 22.—Stocks of all classes were offered freely in the opening dealings in the apprehension that loans would be contracted on account of the deficit in required reserves of the banks revealed by Saturday's bank statement. Supporting orders were put out after the first few minutes of selling and when these became effective in checking the declines, the short interest also bought causing many substantial rallies. Trading became very quiet after 11 o'clock, but the rally was well held. Prices wavered when the call money rate began to climb and when it declined abruptly to the opening range and a few prominent stocks below it, particularly Reading, Southern Pacific, Canadian Pacific and Manhattan.

Missouri Pacific was held strongly above 120. The market recovered slightly before noon and then became very dull.

Bonds were easier at noon.

There was no pressure of stocks in the market during the early afternoon and prices hardened slowly. St. Paul advanced nearly a point above last week's close and the earlier losses in many other leading stocks were about cancelled.

MONEY AND BONDS.

Money on call strong at 7 1/2 per cent. Mercantile paper 5 1/2 per cent. Sterling exchange weak, with actual business in banker's bills at 4.85, 62 1/2 for demand and at 4.82, 75 1/2 for 60 days. Postpaid rates 4.83, 64 1/2 and 4.85. Commercial bills 4.82, 64 1/2.

Mexican dollars, 40 1/2.

Government bonds, steady. Ref. 2 1/2, 100 1/2; do, coupon, 100 1/2; new 4 1/2, 107 1/2; do, coupon, 108 1/2; new 4 1/2, 107 1/2; do, coupon, 111 1/2; 5 1/2, reg. and coupon 105 1/2.

Bar silver, 51 1/2.

NEW YORK METAL PRICES.

Copper week, 110 1/2 @ 11 1/2.

Lead quiet, 4 1/2.

SALT LAKE MARKET.

Salt Lake City, Sept. 22, 1902.

Following are local wholesale prices on produce, quotations being furnished by Faust Creamery & Supply Co., J. M. Christensen & Co., Palace Meat Market, the Intercontinental Milling company and Sam Williamson.

BUTTER.

The butter market is in fair condition. Demand is good.

Creamery (fresh domestic) per lb. . . 25 to 26 cents

Ranch, per lb. . . 12 to 13 cents

Cheese, per lb. . . 12 to 13 cents

POULTRY.

Chickens are in fair demand. Supply about right.

Hens, chickens, from 12 to 14c per pound.

Chickens spring, wholesale, \$2.50 to \$3.50 per dozen, according to size.

EGGS.

Egg market dull with prices between \$6 and \$6.50 per case.

MEATS.

Pork, per lb. dressed . . . 8 to 8 1/2 cents

Beef steers, per lb. . . 7 1/2 to 8 cents

Beef cows, per lb. . . 6 1/2 to 7 cents

Mutton, per lb. . . 6 to 6 1/2 cents

Veal, per lb. . . 7 to 8 cents

Spring lamb, per lb. . . 8 to 9 cents

FLOUR.

The prices of flour and grains are as follows:

High patent, per cwt. . . \$2.10

Best patent, per cwt. . . \$2.00

Straight grade, per cwt. . . \$1.90

Baker's No. 1, per cwt. . . \$1.80

GRAIN.

Shorts, per cwt. . . \$1.85

Corn, per cwt. . . \$1.70

Barley, per cwt. . . \$1.60

Wheat, per cwt. . . \$1.53 1/2

Wheat, per bushel . . . \$1.30

Oats, per cwt. . . \$1.40

Feed barley, per cwt. . . \$1.30

Feed barley, per cwt. . . \$1.40

HAY.

Lucern, per hundred, baled . . . \$5

Timothy, per hundred, baled . . . \$7.50

His Life Saved by Chamberlain's Colic, Cholera and Diarrhoea Remedy.

"B. L. Rye, a well known cooper of this town, says he believes Chamberlain's Colic, Cholera and Diarrhoea Remedy saved his life last summer. He had been sick for a month with what the doctors call bilious dysentery, and could get nothing to do him any good until he tried this remedy. It gave him immediate relief," says B. L. Rye, merchant, Hancock, Md. For sale by all druggists.

BONDS FURNISHED.

All kinds of court and official, personal surety for employers, contractors, corporation officers, trustees and administrators; also burglary insurance written by United States Fidelity and Guaranty Co. of Baltimore, Md.

THE WILSON-SHERMAN CO. Gen'l Agents

62 West Second Street, SALT LAKE CITY.

WE WANT YOUR BUSINESS.

STOCKS WERE OFFERED FREELY.

Was Much Apprehension that Loans Would be Contracted.

SUPPORTING ORDERS OUT.

Had Effect to Check Decline—Call Money Climbed, Prices Wavered and Entire List Declined.

New York, Sept. 22.—Stocks of all classes were offered freely in the opening dealings in the apprehension that loans would be contracted on account of the deficit in required reserves of the banks revealed by Saturday's bank statement. Supporting orders were put out after the first few minutes of selling and when these became effective in checking the declines, the short interest also bought causing many substantial rallies. Trading became very quiet after 11 o'clock, but the rally was well held. Prices wavered when the call money rate began to climb and when it declined abruptly to the opening range and a few prominent stocks below it, particularly Reading, Southern Pacific, Canadian Pacific and Manhattan.

Missouri Pacific was held strongly above 120. The market recovered slightly before noon and then became very dull.

Bonds were easier at noon.

There was no pressure of stocks in the market during the early afternoon and prices hardened slowly. St. Paul advanced nearly a point above last week's close and the earlier losses in many other leading stocks were about cancelled.

MONEY AND BONDS.

Money on call strong at 7 1/2 per cent. Mercantile paper 5 1/2 per cent. Sterling exchange weak, with actual business in banker's bills at 4.85, 62 1/2 for demand and at 4.82, 75 1/2 for 60 days. Postpaid rates 4.83, 64 1/2 and 4.85. Commercial bills 4.82, 64 1/2.

Mexican dollars, 40 1/2.

Government bonds, steady. Ref. 2 1/2, 100 1/2; do, coupon, 100 1/2; new 4 1/2, 107 1/2; do, coupon, 108 1/2; new 4 1/2, 107 1/2; do, coupon, 111 1/2; 5 1/2, reg. and coupon 105 1/2.

Bar silver, 51 1/2.

NEW YORK METAL PRICES.

Copper week, 110 1/2 @ 11 1/2.

Lead quiet, 4 1/2.

SALT LAKE MARKET.

Salt Lake City, Sept. 22, 1902.

Following are local wholesale prices on produce, quotations being furnished by Faust Creamery & Supply Co., J. M. Christensen & Co., Palace Meat Market, the Intercontinental Milling company and Sam Williamson.

BUTTER.

The butter market is in fair condition. Demand is good.

Creamery (fresh domestic) per lb. . . 25 to 26 cents

Ranch, per lb. . . 12 to 13 cents

Cheese, per lb. . . 12 to 13 cents

POULTRY.

Chickens are in fair demand. Supply about right.

Hens, chickens, from 12 to 14c per pound.

Chickens spring, wholesale, \$2.50 to \$3.50 per dozen, according to size.

EGGS.

Egg market dull with prices between \$6 and \$6.50 per case.

MEATS.

Pork, per lb. dressed . . . 8 to 8 1/2 cents

Beef steers, per lb. . . 7 1/2 to 8 cents

Beef cows, per lb. . . 6 1/2 to 7 cents

Mutton, per lb. . . 6 to 6 1/2 cents

Veal, per lb. . . 7 to 8 cents

Spring lamb, per lb. . . 8 to 9 cents

FLOUR.

The prices of flour and grains are as follows:

High patent, per cwt. . . \$2.10

Best patent, per cwt. . . \$2.00

Straight grade, per cwt. . . \$1.90

Baker's No. 1, per cwt. . . \$1.80

GRAIN.

Shorts, per cwt. . . \$1.85

Corn, per cwt. . . \$1.70

Barley, per cwt. . . \$1.60

Wheat, per cwt. . . \$1.53 1/2

Wheat, per bushel . . . \$1.30

Oats, per cwt. . . \$1.40

Feed barley, per cwt. . . \$1.30

Feed barley, per cwt. . . \$1.40

HAY.

Lucern, per hundred, baled . . . \$5

Timothy, per hundred, baled . . . \$7.50

His Life Saved by Chamberlain's Colic, Cholera and Diarrhoea Remedy.

"B. L. Rye, a well known cooper of this town, says he believes Chamberlain's Colic, Cholera and Diarrhoea Remedy saved his life last summer. He had been sick for a month with what the doctors call bilious dysentery, and could get nothing to do him any good until he tried this remedy. It gave him immediate relief," says B. L. Rye, merchant, Hancock, Md. For sale by all druggists.

BONDS FURNISHED.

All kinds of court and official, personal surety for employers, contractors, corporation officers, trustees and administrators; also burglary insurance written by United States Fidelity and Guaranty Co. of Baltimore, Md.

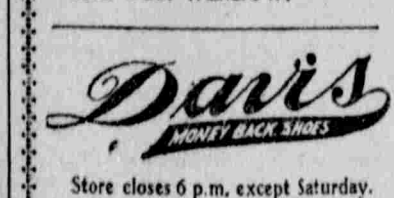
THE WILSON-SHERMAN CO. Gen'l Agents

62 West Second Street, SALT LAKE CITY.

WE WANT YOUR BUSINESS.

Another Week of Quick Shoe Selling.

The crowds have been so great at our \$2.25 sale the past week that hundreds of people could not get accommodated on this account we have decided to continue this sale for another week. SEE OUR WINDOW.



Store closes 6 p.m. except Saturday.

aBrey—Steady; Dec., 11 1/2; May, 11 1/2; cash, 11 1/2.

LIVERPOOL.

Liverpool, Sept. 22.—Close—Wheat, Sept. 5s 10 1/2; Dec. 5s 10 1/2.

WOOL.

St. Louis, Sept. 22.—Wool—Steady; territory and western mediums, 16 1/2; fine, 12 1/2; coarse, 12 1/4.

BUTTER AND EGGS.

New York, Sept. 22.—Butter—Receipts, 5,700 packages, firm. State dairy, 15 1/2 @ 21 1/2; creamery extra, 22 1/2; creamery common to choice, 17 1/2 @ 22 1/2. Eggs—Receipts, 5,100 packages, firm. State and Pennsylvania, 22 1/2 @ 23 1/2; western, 21 1/2 @ 22 1/2; western, 20 1/2 @ 21 1/2.

It's Time

to replace that old watch of yours with a new one. Our line of watches contains the one you want, at the price you want to pay, at every price we can offer a guaranteed timepiece, and can put money into your pocket. There's beauty of design in each watch. Only the good kind to be found here.

DIAMOND MERCHANTS.

LYON & CO.,

143 Main St.

Manufacturing Jewelers.

Telephone 10702.

MILL MEN

Will save money and delay by communicating with our agent,

JOS. W. WILSON,

237 South Sixth East St., Salt Lake City.

Telephone, 736 D.

He has constructed more Roller Flour Mills than any other man in the Rocky Mountain country. Also improved more Water Powers than any other man in the West. His estimates are always correct and satisfactory. He is also among the very best informed men either east or west, as to Salt Refining Machinery.

He handles mill supplies of every description, steam boilers and pumps, steam engines of every popular make, together with steam and belt hoists, with levers interchangeable from right to left hand; screens, rotary bolters, races and roller mills.

Great Western Mfg. Co.

Leavenworth, Kansas.

It Would be Funny

If it were not so serious how people put off having their eyes examined. Many a headache could be saved and aching, smarting eyes need ache and smart no more. Suppose you call next time you're down town.

DR. J. M. BUSWELL,

OPHTHALMIC SPECIALIST.

Rooms 22-23 New Building.

PRESCRIPTION WORK.

WHILE IN TO CONFERENCE COME IN AND SEE US.

We will buy your

HAY, GRAIN, POTATOES, BUTTER, EGGS AND CHEESE, and pay you the highest cash prices for them.

RAY & SONS,

9-11-13 So. 3rd West.

Opp. O. S. L. depot, south.

CULLEN

HOTEL.

S. C. Ewing, Prop.

Salt Lake City Street Cars from all Trains Pass the Door.

(STORAGE MOVING.)

Box 353.

Office,

15 W. 2nd So

Four Large Floors,

22x46 feet, completely fitted with the Latest and Best styles in Everything to Furnish a House complete.

Largest Stock of HOUSE FURNISHINGS AND FURNITURE in Utah.

HARRIS FURNITURE & CARPET HOUSE,

234-236 So. State Street.

NEW YORK.

New York, Sept. 22.—Wheat receipts, 212,500 bushels. Opened firm and active, advancing on a big jump in September at Chicago and general covering. Later it eased off but again rallied on further demand from shorts and a small visible supply increase. Sept. 75 1/2 @ 75 3/4; Dec. 74 1/2 @ 74 3/4; May, 75 1/2 @ 75 3/4.

DENVER.

Denver, Colo., Sept. 22.—Cattle—Receipts, 500; steady. Beef steers, 4.00 @ 5.00; cows, 2.50 @ 3.50; feeders, 3.00 @ 4.00; calves, 3.00 @ 4.00; stockers, 3.00 @ 4.00. Hogs—Receipts, 1,500; higher. Light packers, 7.00 @ 7.50; mixed, 7.25 @ 7.50; heavy, 7.50 @ 7.75.

SAN FRANCISCO.

San Francisco, Sept. 22.—Wheat, strong; Dec., 11 1/2; May, 12 1/2; spot, strong, 13 1/2.

Corn—Large yellow, steady, 14 1/2 @ 14 1/2.

SAVE YOUR MONEY

and when you get a dollar, deposit it with Zion's Savings Bank and Trust Co., No. 1 Main St., the largest and oldest Savings Bank in Utah. Four per cent interest paid on any amount from \$1 to \$5,000. Call or write for any information desired.

JOSEPH P. SMITH, President.
GEORGE M. CANNON, Cashier.

The State Bank of Utah.

SALT LAKE CITY.

Joseph P. Smith, President.
Wm. B. Preston, Vice-President.
Charles S. Burton, Cashier.
Henry T. McKean, Assistant Cashier.

DIRECTORS:
Heber J. Grant, Hiram M. Wells,
Joseph P. Smith, James M. Murdoch,
Wm. B. Preston, James H. Burton,
Wm. L. Preston, James H. Burton.

Commercial Banking in all its branches.
Accounts Solicited.

Special Attention Given to Country Trade.

U. S. DEPOSITORY.

Deseret National

BANK.

Salt Lake City, Utah.

CAPITAL, \$500,000.
SURPLUS, \$250,000.

Safety Deposit Boxes For Rent.

B. H. SCHEFFLER,

BANKER,

SALT LAKE CITY, UTAH.

Five Per Cent Interest paid on time deposits.

10 Main Street, Opposite Court.

McCORMICK & CO.,