

## New Cement Company Launched by Utah, Oregon and California Capital

On Oct. 1 the Portland Cement company, the \$2,500,000 concern organized by Salt Lake and Oregon companies, executed a deed of trust and mortgage in favor of the Security Savings and Trust company. The mortgage covers the company's limestone quarry at Ryeburg, Or., its limestone and cement deposits near Marion, Or., its factory site and clay deposits at Oswego, six miles south of Portland on the Willamette river, where the plant will be located. Its properties are pledged to secure an issue of \$2,500,000, 6 per cent interest mortgage bonds.

The officers of the Portland Cement company are as follows: Aman Moore, president and general manager; Theodore B. Wilson, vice-president; Joseph N. Seal, vice-president; C. W. Nibley, secretary and treasurer. Among the stockholders are many prominent capitalists of Portland, Salt Lake and Los Angeles, including A. N. Mills, president of the Portland Cement Co.; J. C. First National bank; United States National bank; Portland; E. L. Thompson, bank; Portland; Andrew C. Smith, bank; Portland; Savings bank; Portland; Tom Richardson, manager Portland Commercial club; Aman Moore, former general manager of the Portland Cement company of Oregon; and the Union Cement company, and the Oregon Cement company. John C. Cutler, Thomas R. Cutler, John F. Cutler, H. G. Cutler, John F. Cutler, W. A. Cutler, George Romney, Charles S. Romney, O. C. Bebee, Joseph Geoghegan, Burton O. C. Bebee, Joseph Geoghegan, and S. P. Hall. Among those of Los Angeles are Mr. Karl Leonard, one of the owners among re-inforced concrete workers, having built most of the large buildings of Los Angeles, now president of the Southwestern Portland Cement company, which is building a large factory at El Paso, Texas. It is this plant which will be the first to be built will consist of separate buildings of re-inforced cement. It will therefore all be drop-proof. Its capacity will be 1,500 barrels per day and 150 men will be required to operate it.

The officers of the company have been

Investigating the cement question for a long time past, and they engaged Prof. S. B. Newberry, an eminent authority, to make a report on their property, and also on the cement possibilities of the northwest. The following is an extract from his report:

Portland, Or., Aug. 2, 1909.  
Aman Moore, Esq.,  
The Portland Cement Co., City.  
Dear Sir:—I have the honor to present the following preliminary report on Portland cement materials in the vicinity of Portland, Or., and on your plan of establishing cement works near that city.

**DEMAND AND SUPPLY OF CEMENT IN THE PORTLAND REGION.**  
Information furnished me by dealers in cement at Portland is as follows: DEMAND.

The present total consumption of Portland cement in Western Oregon and Washington is about 2,000,000 barrels per year, divided approximately as follows:

**WESTERN WASHINGTON.**  
Barrels.  
Imported from Europe..... 150,000  
Domestic, from northern Washington works..... 200,000  
Domestic, from northern California and eastern works..... 700,000  
**OREGON.**  
Imported from Europe..... 150,000  
Domestic, from northern California works..... 600,000  
Total..... 1,500,000

**DOMESTIC PRODUCTION.**  
The only American cement factories which supply any considerable amount of cement to the states of Washington and Oregon are the following:  
Barrels.  
Baker & Concrete, Washington, two works, production..... 200,000  
Pacific Portland Cement Co., Suisun, California..... 1,200,000  
Standard Portland Cement Co., Napa & Santa Cruz, Cal..... 1,500,000  
Cowell Portland Cement Co., Concord, California..... 600,000

Much of this domestic cement is not of first quality, and not accepted for city or government work. The demand for cement of highest grade is still chiefly supplied by cement imported from Europe.

**PRICE OF CEMENT IN THE PORTLAND MARKET.**  
Wholesale prices of Portland cement



TO THE HEART  
THE SHORTEST ROUTE TO A MAN'S HEART IS THROUGH HIS STOMACH. USE  
**HUSLER'S FLOUR**

at Portland, Oregon:  
Best imported, \$2.25 per barrel in wood.  
Medium imported, \$2 per barrel in wood.  
Domestic, \$2 per barrel net, in sacks.  
Freight on cement by water from northern California works, to Portland, is 45 cents per barrel—discount to jobbers 10 cents per barrel, making lowest net price at California works about \$1.42.

**CAPITAL AND BONDS.**  
The company has a capital stock of \$2,500,000, of which amount \$100,000 is 7 per cent cumulative preferred stock, and the remaining \$2,400,000 of common stock. The present stockholders of the company have taken the preferred stock. The well known firm of Barroll & Co. of Los Angeles and Chicago has undertaken to place \$250,000 of the company's 6 per cent bonds, 100 per cent of the common stock of the company will accompany the bonds to the investors therein. Messrs. Barroll & Co. will first offer these securities to investors within the state of Oregon and adjacent states, wherein the cement will be marketed. The remainder of the securities will be placed in the east. The company will begin clearing off its factory site the latter part of November, and construction work should be well under way by the first of the year.

## COLLEGE PRANKS AT SOPHOMORES' PARTY

Decorations Fall and Punch Bowl Disappears in Middle of the Festivities.

The sophomore lawn party at the home of the class president, Harold Holman, last night was both entertaining and exciting. The back lawn was prettily decorated and lighted with Japanese lanterns, while a large canvas was stretched over the grass and used for dancing. On the front porch punch was being served and all was merry until towards the middle of the evening the dancers were started by the decorations falling among them. Investigation showed that the wires had been cut from a tree at the back of the yard, but luckily the light was not cut off. Soon some one discovered that the punch bowl had disappeared from the front porch and the boys were off in a bunch, all suspecting the freshmen of the school, who had sworn to get even for the cup the sophs played on them the night before the flag rush.

Three boys, Gilbert Williams, Joe Shepard and Ross Hartwell, were caught with the punch bowl, brought back, vindictively and thrown to the ground, where they were shorn of their locks, then left in the center of the group with their feet and hands tied, while the rest were served with ice cream and cake.

The three boys were then served while the sophs danced about them and sang. Afterwards they were taken to the nearest car line and given instructions to make tracks at once.

### \$10 REWARD

For information leading to the recovery of stolen from Cor. 2nd and 10th South, Tuesday night, H. Green 513 So. 2nd West, Bell 2302.

### UNIVERSITY NEWS

The night school of the L. D. S. Business college on Wednesday, Oct. 6, it will be in session for two hours, from 7 to 9, three nights a week, Mondays, Wednesdays and Thursdays. The night school is designed to meet three demands not supplied by ordinary day school, viz.: for men and women, while employed, who desire to make themselves more proficient by specialization along some particular line; for young working people who desire added educational and culture advantages; and for foreigners of all nationalities who are learning the language.

The business men of the day college have effected a strong organization. They intend to hustle and will get the most successful business men in the state to show them how. The officers are B. W. Clayton, president; J. B. Sharp, vice president; Lillian Palmer, secretary; Kate Hatch, treasurer; Sterling Herper, reporter to the Gold and Blue, and Ed. Judd, yell master. A. L. Nelson is the editor of the Gold and Blue.

Owing to the fact that the Seattle fair does not close until October 16, the L. D. S. exhibit, which won the first prize and the gold medal that accompanied it, as the best educational display at the Alaska-Yukon-Pacific exposition, will not be shown at the state fair this autumn.

Special supervision of the general health of the students has been exercised by the presidency. Owing to the prevalence of typhoid fever in the city, precautionary measures have been taken to prevent its outbreak in the school. A chemical analysis was made of the water, the milk supply investigated, and the lunch room closed for a week. Everything was reported in the best condition.

School closed Friday and will not reconvene until Oct. 7. The vacation is arranged for the State fair and conference.

### FREE LECTURE MONDAY.

Cliff-Dwellers of Puye, New Mexico, Will be the Subject.

What will undoubtedly prove an event for students of the Book of Mormon and everybody interested in archeological research generally will be a free lecture which will be delivered at Barrett hall Monday evening at 8:15 by Dr. Edgar L. Hewett, director of the school of American archeology.

While the lecture is open to the public it will ostensibly be delivered before the Utah society. Dr. Hewett's lecture is entitled "The Excavations at Puye, New Mexico." Puye being the name of the district where the director and his assistants have recently laid bare remarkable cliff dwellings. The same lecture recently delivered before the archeological society in Portland was responsible for some very flattering comment.

### Price Remains

**\$5.75**

No Advance on  
"PEACOCK"  
"Rock Springs"

Central Coal & Coke Co.

40 West 2nd South.  
Phones: Bell Ex. 35.  
Ind. 2600.

**Bargain Saturday at Schramm's**

Pompeian Cream, Regular 50c ..... 34c  
Peroxide of Hydrogen, Regular 25c (4 ounce bottle) ..... 15c  
Semper Glovine, Regular 50c ..... 25c

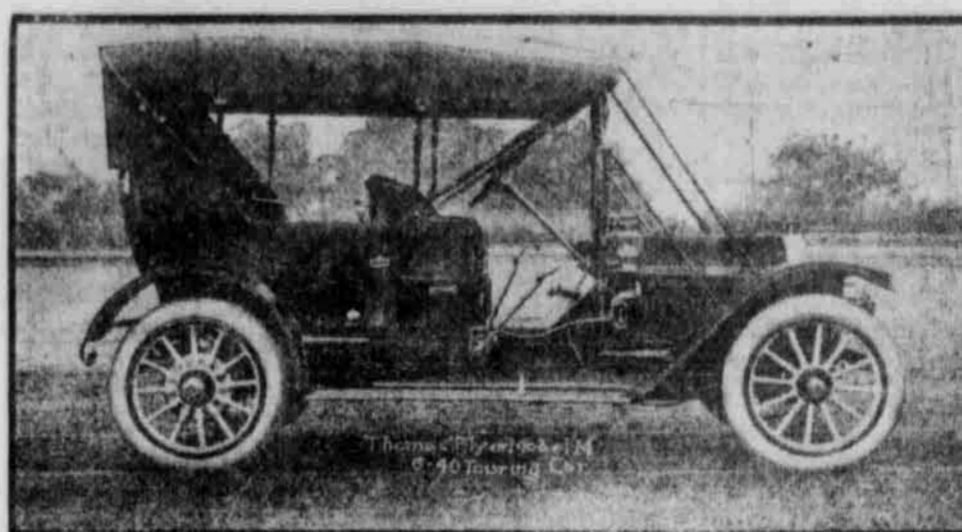
**SCHRAMM'S**

"Where the Cars Stop"

**BARGAIN SHOPP.**

## Every Stroke of This Engine

**Saves You Money \$3500**  
With Complete Equipment.



## THE 1910 THOMAS FLYER

Astonishing Price Great Improvement Great Power

### Unrivalled Performance

Especially Designed and Constructed to Eclipse Competition and Win Absolute Leadership

Experts, Chauffeurs and Automobilists Are Cordially Invited to Investigate the New Candidate for Public Favor.

Six "Long Stroke" Vibrationless Cylinders, Rated at 40 H. P.  
(4 1/2 in. x 5 1/2 in.) Develop 60 Horsepower on the Brake

Price \$3500.00, including superb equipment of silk mohair top, folding glass front, extra ignition system with self starter, Hartford shock absorbers, speedometer, Prest-O-Lite tank, side dust aprons and pan, hand rail, two head lights, rear light, side lights, horn, etc., which lists at nearly \$5000.00.

This makes the car cost but about \$3000.00 as cars are usually sold.

**Positively No American Car in the 40 to 50 H. P. Class Can Equal Its Splendid Performance, Because**

It is the only American car in its class that is equipped with the new extra silent, foreign motor design, which develops such vastly increased power at same piston speed, viz., long-stroke cylinders with very large smoothed gas passages and manifolds, also water jacketed valve stems—the design that has revolutionized motor construction abroad by winning all the "4" motor contests, the Grand Prix race, etc., etc.—and that is also equipped with six cylinders and also has the largest reverse power.

**The Following Facts Are Convincing, But A Demonstration Is Proof.**

The "M" six-cylinder motor develops 50 H. P. at 1000 R. P. M. and 60 H. P. at 1400 R. P. M., which is 14 per cent more power than A. L. A. M. rating, which is standard.

Many cars run fast enough, but only cars of highest quality can run slow enough on high gear.

Model M will run smoothly as slow as three miles per hour, slower than a man walks, loaded with passengers, amidst the crowded traffic of city streets, on high gear without changing. It is safer, easier, and a new and most delightful experience and a performance unrivaled. The surest proof of great reserve power, six-cylinder flexibility and highest motor efficiency.

When desired, Model M will run slowly on high gear on bad roads and hills that most cars are compelled to run on lower gear or at break neck and uncomfortable speed to accomplish on high—another strong proof of great reserve power, six-cylinder superiority and high motor efficiency.

The same car, loaded with passengers, can run 60 miles per hour on country roads—another proof of great reserve power and high motor efficiency.

Model M develops a speed of 20 miles per hour at only 500 R. P. M.; 30 miles per hour at 840 R. P. M.; 40 miles per hour at 1120 R. P. M., etc., etc. At the same speed, short-stroke motors of same bore require 37 per cent more revolutions; 37 per cent more jar on bearings; 37 per cent more vibration; 37 per cent more wear; 37 per cent shorter life; 37 per cent more noise of exhaust and valves; more oil, etc.—another proof of increased motor efficiency, and proof that there is less vibration, greater silence, smoother running, easier hill climbing and far greater flexibility in the six-cylinder "Long Stroke" motor design.

**All the Latest Foreign Models of Most Popular Make Include 6 Cylinders "Long Stroke" Motors.**

Model M includes all well-tried improvements

of greatest merit, including latest nickel steel, short case transmission gear; extremely simple control; imported ballbearings throughout; short rigid shafts 8 7/10" between centers, unusually quiet and strong. Engine has one-piece construction, large diameter crankshaft can be removed with fly wheel as a unit; forged steel herringbone timing gears with dead-end case; fly wheel and all rotating mechanism perfectly balanced, both statically and dynamically; valve plungers cushioned for silence; very large water jackets covering valve stems insure against over heating and sticking; three-point motor suspension; extra large brakes; very long three-quarter elliptic rear silico manganese springs; two universal joints between the transmission and clutch, eliminating strain on bearings; the old reliable Thomas three-disc clutch, patented; low center of gravity; 125-inch wheel base; nickel steel drop frames; extra large bearings throughout; long propeller shaft drive; slight angle dust-proof universal joints; geared force feed oilers; forged axles; clearance 11 inches; hand hammered aluminum body; finest upholstery; wheels and tires 36x4 1-2; workmanship and material guaranteed to be equal to the best.

### There Is a Reason.

The design was begun in 1907 and the construction in 1908, to group in this one car all the well-tried improvements of greatest merit that have been evolved in various popular cars, for the sole, and we trust commendable, purpose of eclipsing competition and doing the largest business in the 40 to 50 H. P. class, by giving more power, higher efficiency, better results, and more for the money in every way. Two years of patient investigation, designing, testing and improving have been required to complete the task, during which we had the great advantage of participating in and winning the 22,000-mile endurance contest around the world, from New York to Paris, a benefit no American competitor enjoys, and also winning thirty-nine other contests and world's records including the non-stop record of 21 days 3 hours and 29 minutes on public roads in zero weather; two Glidden tours (the only ones we entered), also the 180-mile six-cylinder record made at Savannah in 182 minutes and 25 seconds.

In touring cars of larger power and size we have the great Model F 40 H. P., an improved New York-to-Paris car, which sells at \$4,500.00; and the greatest of all touring cars, 6-70 Model K, fully equipped, at \$6,000. Model K is equipped with "38" tires, also many other improvements. It has the greatest reserve of power of any stock touring car in America, and every owner will back up the statement that the 6-70 Thomas Flyer is the last word in smooth running, hill climbing and all that is good in automobiles.

## Randall-Dodd Auto Co. Ltd.

223 South State St.

Exclusive Distributors for Utah, Idaho, Nevada and Wyoming

Cures Biliousness, Sick Headache, Sour Stomach, Torpid Liver and Chronic Constipation. Pleasant to take

**ORINO**

Laxative Fruit Syrup

Cleanses the system thoroughly and clears away complexions of pimples and blotches. It is guaranteed

FOR SALE BY F. J. HILL DRUG COMPANY, SALT LAKE CITY.

**SEMI-WEEKLY NEWS THE BEST COUNTRY NEWSPAPER**

THE APPROVAL  
of the most  
EMINENT PHYSICIANS  
and its  
WORLD-WIDE ACCEPTANCE  
by the  
WELL-INFORMED.

BECAUSE ITS COMPONENT  
PARTS ARE KNOWN TO BE  
MOST WHOLESOME AND  
TRULY BENEFICIAL IN EFFECT,  
HAVE GIVEN TO

**Syrup of Figs**  
and  
**ELIXIR OF SENNA**

THE FIRST POSITION AMONG  
FAMILY LAXATIVES AND HAVE  
LED TO ITS GENERAL USAGE  
WITH THE MOST UNIVERSAL  
SATISFACTION.

TO GET ITS  
BENEFICIAL EFFECTS,  
ALWAYS BUY THE GENUINE,  
MANUFACTURED BY THE CALIFORNIA FIG SYRUP CO.

FOR SALE BY ALL LEADING DRUGGISTS  
ONE SIZE ONLY, REGULAR PRICE 50¢ PER BOTTLE

**Syrup of Figs**  
and  
**ELIXIR OF SENNA**

THE ORIGINAL  
AND ONLY GENUINE

IS MANUFACTURED BY THE

**California Fig Syrup Co.**

## CUTLER'S

**\$1.75**

**Trouser Sale**

Splendid Values

We have several hundred pair of Men's and Young Men's Trousers which occupy valuable space and to make room for our new stock we want you to help us. Your choice of the lot at \$1.75

Have you voted in the Auto Contest?

**CUTLER'S, 36 Main St.**

