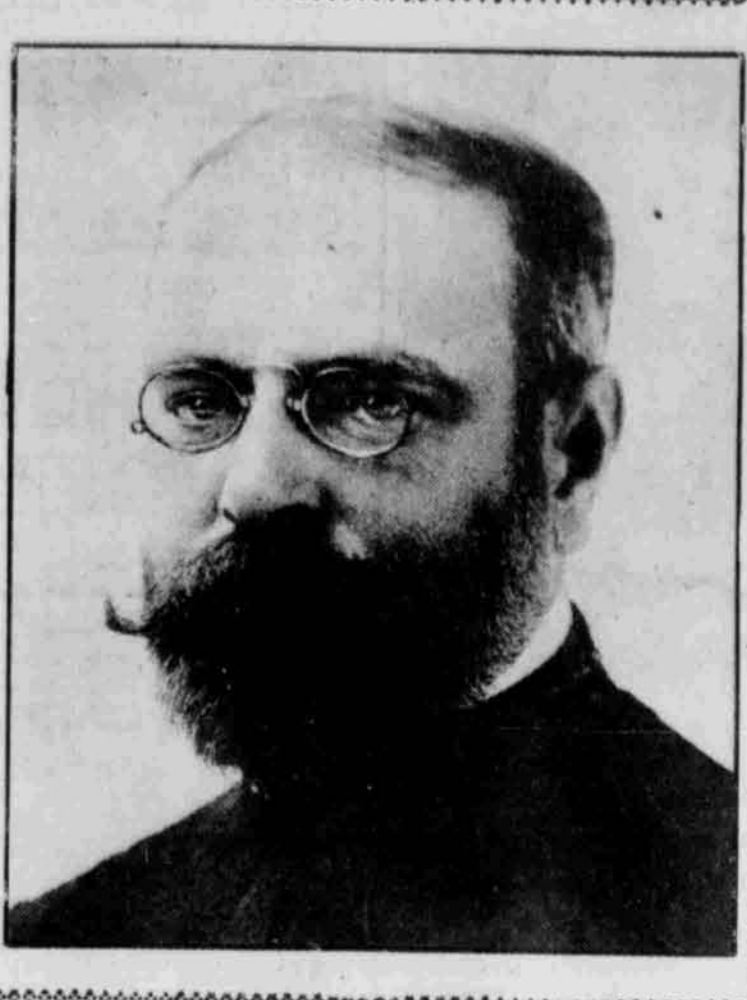


THE BAND AND MUSICIANS



JOHN PHILIP SOUSA.

At the Tabernacle Next Tuesday Matinee and Night.

The visit of Sousa the great next Tuesday afternoon and evening... The program for the evening will be as follows: (1) The 'Summer Girl'... (2) The 'Dancing Girl'... (3) 'Charming Butterfly'... (4) 'The Loves of'... (5) 'Tristan and Isolde'...

MATINEE 2 O'CLOCK. List of songs from the 'The Fairies'... 'The Loves of'... 'Tristan and Isolde'...

INTERMISSION. A. S. Caslick, 'Kakueka' (new)... 'The Loves of'... 'Tristan and Isolde'...

THE EVENING PROGRAM. 'The Loves of'... 'Tristan and Isolde'... 'The Loves of'...

INTERMISSION. Miss Florence Hardeman... 'The Loves of'... 'Tristan and Isolde'...

THE EVENING PROGRAM. 'The Loves of'... 'Tristan and Isolde'... 'The Loves of'...

INTERMISSION. Miss Florence Hardeman... 'The Loves of'... 'Tristan and Isolde'...

THE EVENING PROGRAM. 'The Loves of'... 'Tristan and Isolde'... 'The Loves of'...

INTERMISSION. Miss Florence Hardeman... 'The Loves of'... 'Tristan and Isolde'...

THE EVENING PROGRAM. 'The Loves of'... 'Tristan and Isolde'... 'The Loves of'...

INTERMISSION. Miss Florence Hardeman... 'The Loves of'... 'Tristan and Isolde'...

THE EVENING PROGRAM. 'The Loves of'... 'Tristan and Isolde'... 'The Loves of'...

INTERMISSION. Miss Florence Hardeman... 'The Loves of'... 'Tristan and Isolde'...

THE EVENING PROGRAM. 'The Loves of'... 'Tristan and Isolde'... 'The Loves of'...

INTERMISSION. Miss Florence Hardeman... 'The Loves of'... 'Tristan and Isolde'...

THE EVENING PROGRAM. 'The Loves of'... 'Tristan and Isolde'... 'The Loves of'...

INTERMISSION. Miss Florence Hardeman... 'The Loves of'... 'Tristan and Isolde'...

THE EVENING PROGRAM. 'The Loves of'... 'Tristan and Isolde'... 'The Loves of'...

INTERMISSION. Miss Florence Hardeman... 'The Loves of'... 'Tristan and Isolde'...

THE EVENING PROGRAM. 'The Loves of'... 'Tristan and Isolde'... 'The Loves of'...

History of a London Theatrical Failure

London Dramatic Letter

(Special Correspondence.) LONDON, Oct. 20.—It would be at most unnecessary to refer to the production of "The Merry Peasant" at the Strand-Lane Waldorf... The circumstances attending this event offer an instructive object lesson in the matter of theatrical enterprise...

Just a week ago the much-anticipated meeting of the promoters of the National Shakespeare Memorial Theatre took place at the Marlborough Hotel... The result, but it was only another instance of the mountain giving birth to a mouse...

Out of such elements what could one expect but a fiasco? Moreover, four of the principal roles were assigned to artists whose united ages certainly do not fall short of 200... Of course, a desperate effort is being made to pull the thing together...

The past week has also witnessed the production of "The Servant in the House" at the Adelphi... This is certainly the first night audience has ever seen...

It is a pity that the result must be the closing of the theater, and that the promoters should have had to face such a disaster...

There was to be a wonderful gathering of provincial buyers who were to be asked to form committees throughout the length and breadth of the land with a view of obtaining funds for the erection of a national theater in London...

There was to be a wonderful gathering of provincial buyers who were to be asked to form committees throughout the length and breadth of the land with a view of obtaining funds for the erection of a national theater in London...

There was to be a wonderful gathering of provincial buyers who were to be asked to form committees throughout the length and breadth of the land with a view of obtaining funds for the erection of a national theater in London...

There was to be a wonderful gathering of provincial buyers who were to be asked to form committees throughout the length and breadth of the land with a view of obtaining funds for the erection of a national theater in London...

There was to be a wonderful gathering of provincial buyers who were to be asked to form committees throughout the length and breadth of the land with a view of obtaining funds for the erection of a national theater in London...

There was to be a wonderful gathering of provincial buyers who were to be asked to form committees throughout the length and breadth of the land with a view of obtaining funds for the erection of a national theater in London...

There was to be a wonderful gathering of provincial buyers who were to be asked to form committees throughout the length and breadth of the land with a view of obtaining funds for the erection of a national theater in London...

There was to be a wonderful gathering of provincial buyers who were to be asked to form committees throughout the length and breadth of the land with a view of obtaining funds for the erection of a national theater in London...

MUSICIANS' DIRECTORY

ANDREW BOWMAN. Studio 600 Templeton. Teacher of Arabic Keyboard-Perfect Tones.

MRS. AGNES DAHLQUIST-BECK-STRAND. Piano. Graduate Royal Conservatory Berlin. Studio 411 Templeton.

MRS. JOHN MORTON DAVIS. Piano. Pupil of Miss Denton and Theodor Leschetzky of Vienna. Studio 604 Templeton.

JOHN J. MCCLELLAN. Organist of the Tabernacle. Director of the Tabernacle Orchestra. Piano, Organ and Theory.

MRS. MATTIE READ EVANS. Pianist and Teacher. Pupil of Goldowsky, Berlin. Studio at 223 4th Avenue, Tel. 1231-B.

GEORGE E. SKELTON. Teacher of Violin. Graduate from Trinity College London. References and Studio: Room 2, Board of Trade Building.

CLAUDE J. NETTLETON. Teacher of Violin. 420 Templeton Bldg. Tel. 4574. Pupil of Violin, Columbia University.

EMILY H. SITZER. Teacher of Voice and Piano 215 Sec and Trust Bldg. Phone Bell 945.

C. D. SCHELLER. 802 Templeton. Cello Pupil of Anton Reisinger and Jacques Van Lier, Berlin, Soloist at Conservatory, Instructor of Cello, Guitar, Mandolin and Banjo.

ALEXANDER J. KISSELBURG. BARITONE. Teacher of Singing and Voice Pupil of the Academy and Trust Bldg, Salt Lake City.

MRS. K. G. MAESER. Pianoforte Instructor. Postoffice and Studio, 210 So. 15th St. Tel. 281-B.

MISS ESTELLE JENSEN. Teacher of Piano. Professional Accompanist. Studio Room 2, The Tabernacle, 121 E. 1st St. Tel. Bell 1740-3.

MISS HELEN HARTLEY. VIOLIN. Pupil of G. S. Johnson and Irma Herrick. Studio 28, 11th St. Phone 2742-2.

THE WETZEL VOCAL STUDIOS. Miss Grace Danvers, 218 H St., Bell 41 North State St.

Mrs. Wright vocal instructor and pianist. Wetzel concert organ. City Hall, 8th South. Bell Phone, Main 4727. Tel. Phone 1244.

there will be a children's chorus; these two evenings being the last two of the coming church bazaar.

The untimely death of Carl Sobeski, the noted baritone, will be learned with regret by many Salt Lake musical people who heard him sing while in this city during the summer of 1908.

The musical programs for tomorrow morning and the evening services in the First Methodist church possess the usual attractiveness, numbers being rendered by the choir, assisted by Miss Schrack, Mrs. Sorenson, and Mr. John Robinson.

The apartment in the Hooper-Edredge building used by Heild's band as a practice room, has been remodelled and refitted for the comfort of the musicians.

A flourishing concert band has been organized at the state university, under the direction of Prof. Squires Coop.

Mrs. Emma Ramsey Morris sailed on the 10th inst., on the Lapland for Astoria. Letters from her give the details of a number of musical affairs in which she took part in Chicago, several Indiana points, and in New York.

The Rome correspondent of The Mirror has noted the amazing decline of opera in Italian centers, owing to the fact that America's requirements have taken the great singers, leaving in Italy particularly very inferior material.

The question has been asked, "Why is not Yease coming to America this season?" The answer probably is that he has not had time to think of such a thing, for he has been learning the Brahms concerto.

The Vienna correspondent of the London Telegraph writes that Franz Lehár, composer of the "Merry Widow," produced during last summer no less than three new operettas.

Boston's new million dollar opera house was opened Monday night with a performance of "Ladiloconda," in which Mme. Lillian Nordica, Mme. Louise Homer, Lillie Anna Mellicham, Messrs. Constantino Bakasoff and Mardonne have the chief parts.

"Aida" on Wednesday was sung with Mme. Bonissegna in the title role, and Mme. Chasson as Amneris. Mr. Christian Hansen, a Danish tenor, will be the Radames.

Mr. Henry Russell, director of the new house, announces that one night a week debutants will have a chance to be heard in accordance with this policy.

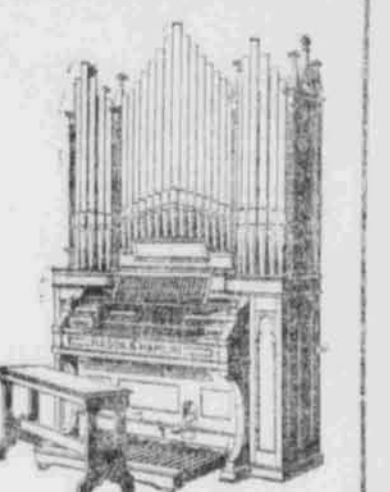
Mr. Hammerstein's press agent boasts that in no other opera house in the world could Massenet's "Herodiade" be presented with so splendid a cast as that which will be heard in it at the first performance in America at the Manhattan on Monday.

Miss Osborne, the well known mezzo soprano, has a wonderful voice and will be a revealing star in many Salt Lake adventures.



MISS AMY OSBORNE.

MASON & HAMLIN Church Organs



The best in the world. These organs have been selected by the following churches: 12, 13, 17, 18, 14, 9, 31 and Liberty wards, the Orpheum Theater, Salt Lake City.

THE BEST IS WHAT YOU WANT.

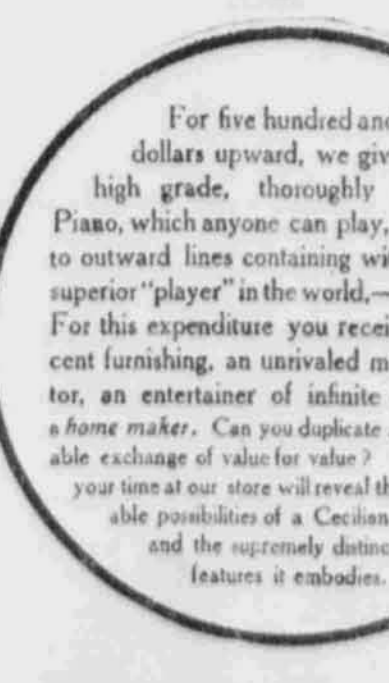


CHAMBERLAIN MUSIC CO. 51 Main Street, Salt Lake City, Utah.

The Anderson Piano. With its singing soul. New York and Western Piano Co. 12 W. FIRST SOUTH.

READ THE THEATRE MAGAZINE FOR THEATRICAL NEWS AND STAGE PICTURES.

A Fair Proposition



For five hundred and fifty dollars upward, we give you a high grade, thoroughly first-class Piano, which anyone can play, beautiful as to outward lines containing within the most superior "player" in the world—the Cecilian.

CONSOLIDATED MUSIC CO. 109-11-13 Main St., Salt Lake City.

Steinway Representatives