

Most interesting Corset Event of the Year.

KEITH-O'BRIEN CO.

Redfern and Warner's represent the highest type of Corset making.

CORSET DEMONSTRATIONS ON LIVING MODELS BY EXPERT CORSETTIERES

Demonstrations All Week on Living Models from 10 to 11 a. m., from 2.30 to 3 p. m. and from 4 to 5 p. m. Aside from these Special Demonstrations Our Expert Corsettiere will take pleasure in Fitting Corsets at all hours during the day. Every lady is cordially invited to be present.

Redfern Whalebone Corsets.—There is much to know about corset models this season. There is a nicety in the adjustment that has not been needful before. To fit is one thing—to fit and create is another. These are the essentials in corset selection this season. The figure must be made and, in the vernacular of the day, "it is up to" the corset to build the base. Slenderness is the proper contour, rather straight lines—that is over the hips—the waist, of course, round and small as compatible with preserving the proportions.

There is a way to put on and take off a Warner's Corset that builds accurately and comfortably a fashionable type of figure.

It is easy to put a corset on properly as improperly, and it takes no longer. We have a little book which has been prepared by the designer of these noted corsets, which not only tells you how to adjust and wear these corsets, but how to care for corsets.

The boning, clasps, side steels and backbone of Warner's Corsets are guaranteed not to rust, break or punch through the fabrics. The eyelets are guaranteed not to corrode or pull out and the metal parts of the Security Rubber Button Hose Supporters are guaranteed not to rust.

We thought for you and actually have the make of corsets that combine the essentials. These models are here this week in full array and we but await the opportunity to show them to you. All our salespeople are trained in corsetry and are qualified to serve you well.

Warner's Rust-Proof Corsets



The story of Warner's Corsets is the most interesting corset story to women who give thoughtful consideration to matters pertaining to dress.

It is not so long ago since the purchase of a corset was a simple matter. All a woman felt responsible for was the size and she gave her corset little further thought.

Now the corset model becomes the fundamental dress factor. It builds specific lines, shapes the form to take on a given contour, one that conforms not only to figures but also to dress modes, and this is where we come to the story of Warner's Corsets, a story with a figure fascination that never fails to draw.

First, these corsets are scientifically made—that is, the patterns are accurately graded to fit each part of the form to be corseted—an essential point. Then comes the designing, which must harmonize with the dress fashions, that is, proportions of bust, curving or sloping hip, length of waist, etc. There is a subtlety in modeling that requires the aid of fabrics that lend easily but firmly to shaping. Then there is the boning factor. The boning must be pliable, as that is necessary to perfect modeling and correct corseting. These corsets are boned with the pliable Rust-Proof boning.

The correct placing of the hose supporters is an item of consideration in designing, as they do more than hold the corset tightly or attaching the stockings; they shape the corset skirt over the hips. How they aid you will learn from our saleswomen and from a fitting booklet which tells you the way to lace and put on a corset and when and where to attach the hose supporters.

Every part of Warner's patterns, designing and construction is true to fashion with every degree of comfort.

Security Rubber Button Hose Supporters attached. We will take pleasure in showing you the very comprehensive line of these splendid models which range in price from \$1.00 to \$5.00 per Pair.

Redfern Whalebone Corsets Model "C C"



Full figures are, as a rule, considered "hard to fit." We think not, as we have in the Redfern make many models that are specifically patterned for full figures.

Redfern "C C" is a model with the Dip Long skirt and the long back. This model never fails to improve the figure—in fact, it is the making of the figure.

We invite you, if your form answers to this description, to visit our fitting room. Our expert will quickly fit you without extra charge. Security Rubber Button Hose Supporters. Model "C C," Batiste, Price, \$5.00.

Redfern Whalebone Corsets Model 99.

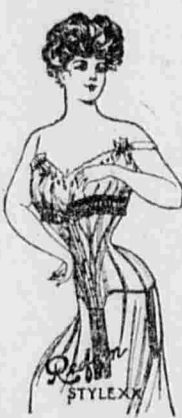


Slenderness is only pretty when the lines are slightly curving!

Redfern 99 is distinctly made for young ladies; designed to assist in the developing of the form, which in this model becomes bewitchingly sylph-like in its curves. Filled with supple Artic Whalebone, and trimmed exquisitely with Valenciennes lace.

Attached are the good Security Rubber Button Hose Supporters. Model "99," Batiste, Price, \$3.75.

Redfern Whalebone Corsets Style X X.



These must really be worn to be appreciated. We can tell you many truths but they must be demonstrated through actual wear. Our fitters will know the model best suited. Style X is cut decidedly high and straight at the top to accord with the present modes. It sharply curves in at the waist at the back and sides giving the round waist irrespective of the straight line at the front.

Lingerie laces, daintily frilled, trim the model, and your choice of Coutille or Batiste. Style XX, Batiste, Price, \$3.75. "Security" Rubber Hose Supporters.

Redfern Whalebone Corsets Style 3131.



A highly approved new model of the long back and high bust design, giving to a medium figure the curves and length between bust and waist now considered correct form. As much attention is given to shape below the waist at the back as is given above and to the waistline and flat effect. The materials are as beautiful in their way as is the shape, and the trimmings are exquisite.

3131 Batists. \$6.50 per pair. Redfern Corsets are Boned with Pure Whalebone. Security Rubber Button Hose Supporters attached.

Warner's Rust-Proof Corsets For Slender Forms Style 274.

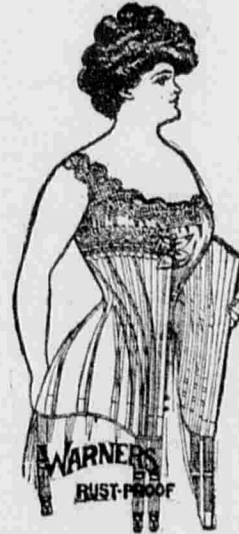


The girldle top and straight front permit a healthful freedom of chest and diaphragm, while the skirt is shaped to slope to the hips.

To the hose supporters is due no small share of the praise for the figure result secured by this model. Attached at front and sides, they prevent the corset from riding up, and the slight pull is a gentle reminder to "stand erect." The hose supporters are the Security Rubber Button kind.

The comfort derived from wearing a model that may be washed like lingerie is inestimable. The boning is guaranteed rust-proof. Style 274, White Batiste, Price, \$1.00.

Warner's Rust-Proof Corsets Style 265



Specifically made for a stout woman.

There is no other corset today that so perfectly shapes the stout form into correct lines for the present dress as this style.

To prevent its breaking and for extra abdominal support it is braced with parallel circular bands of tape on the inside between the boning and the body of the fabric.

(Note the inside of the corset as shown in sketch).

The skirt is very long, especially at the back, where its inserted a deep gore which controls the flesh, distributing it proportionately. The unbreakable features of this model are unequalled. The bones, side steel clasps are guaranteed not to rust, break or punch through the fabric and the eyelets and the metal parts of the hose supporters are also warranted not to rust. These are good features that will be appreciated by stout women.

Security Rubber Button Hose Supporters attached. Style 265, Price, \$ 3.50.

Redfern Whalebone Corsets Redfern Model "B."



A remarkable corset. For stout forms, made strikingly dignified when rightly corseted.

Long back and skirt with two distinct dips or extensions, to which are attached, as well as the clasp tip, silk elastic Security Rubber Button Hose Supporters. A perfectly proportioned figure, suiting exactly the modistes' lines

for correct gowning, is shaped in this corset. Model "B," Coutille, Price, \$12.00.

Redfern Whalebone Corsets Model 25.



Designed for the short waist, full proportioned form. This model admirably takes care of the fullness of the hips, shaping them in the corset skirt, which is very firmly boned. At the side is fine cross boning for bracing the bust and there are three broad side steels for extra hip support.

Broad elastic webbing Security Rubber Button Hose Supporters are attached at the front and sides. Redfern 25, Imported Coutille, Price, \$6.50.

Redfern Whalebone Corsets Model 26. Whole-Back Lace-Front Shape.



If you have a plump, rather well-developed form, there is no model so good as

Redfern Model 26. Made of imported coutille, richly trimmed with net laces and double rows of wash ribbon, and ribbon bow. The new high bust is especially designed to round back over the form, showing no line through the most snug fitting gown.

Broad silk elastic Security Rubber Button Hose Supporters are attached at front and sides. Redfern 26, Coutille, Price, \$8.00.

Redfern Whalebone Corsets Model 22.



Excellent suited to the latest fashions. In its slenderness it gives a willowy grace to forms of average proportions.

There's a little feature in the hip gore that slants from the clasp toward the waist at the side that insures a comfortable, close fit. You won't find it in any other model.

Embellished with Brussels net, point d'esprit edged lace, flatly applied. It is equipped with a triple set of Security Rubber Button Hose Supporters. Model "22," Batiste, \$5.00 per Pair.

Warner's Rust-Proof Corsets Style 282.



New high-bust model for the average well-developed form. Gives the beautiful rounded waist, with the long sloping hips. The bust is roundly brought forward and enclosed easily by the corset top, which is not discernible through the most snug-fitting gown. The corset skirt is long, restraining and sloping the fullness of the figure.

Beautifully made of imported materials, with dainty lace frilled on the top, threaded with satin ribbon, finished with a handsome ribbon bow. Security Rubber Button Hose Supporters attached. Style 282, Batiste, Price, \$2.25.

Warner's Rust-Proof Corsets Style 223.



Slenderness is only pretty when there are no awkward angles. Here is a new shape that rounds the waist and gives the correct slope to the hips—perfectly adapted to the slender form.

The attached Security Rubber Button Hose Supporters are unexcelled for wearing quality and are to be depended upon for holding the corset in place and giving poise to the figure.

Style 223, Batiste—Following the same lines, but made in Batiste, white only. Price, \$1.25.

Mail orders for corsets will receive careful attention. Our stock is the largest carried by any house in the West. As we keep all lines full it is no trouble to fit any figures.

Warner's Rust-Proof Corsets Style 296.



Our best selling corset for the average form. Gives the well-defined, lengthened waist, with the long back and sloping hips.

Security Rubber Button Hose Supporters are attached at front and sides. Style 296, Batiste, Price \$1.00.

Warner's Rust-proof Corsets Style 215



Well made, and of the best wearing fabrics for medium full forms. The back is long, as it should be for shaping the form properly for present style. Frilled Security Hose Supporters are attached at front and sides.

The trimming is flatly applied and extremely dainty. Style 215, Batiste, Price \$1.00.