

Read the Offerings in Suburban Homes

HOUSES—LOTS—ACREAGE

BURT & CARLQUIST

REAL ESTATE
MORTGAGE LOANS
FIRE INSURANCE

OWING TO OUR RAPIDLY
INCREASING BUSINESS WE

HAVE REMOVED

TO MORE COMMODIOUS QUARTERS WE ARE BETTER PREPARED TO SERVE OUR MANY CUSTOMERS. YOU WILL FIND US HEREAFTER AT

No. 14 W. 3rd So. St.

WE HAVE A BIGGER AND BETTER LIST OF HOMES ON EASY TERMS; BUILDING LOTS IN ALL SECTIONS; FARMS AND FRUIT LANDS IN SALT LAKE, DAVIS AND UTAH COUNTIES.

Call and see us in Our New Office.

BURT AND CARLQUIST

No. 14 West Third South Street.

REAL ESTATE, MORTGAGE
LOANS, FIRE INSURANCE.
PHONES: IND. 2; BELL 2078.

FOREST DALE.

Is better located than any other subdivision near the city. Besides having modernized streets, an independent water system is controlled by the people. These improvements, together with two street car lines, electric lighted streets, one of the most beautiful churches, first class school building and beautiful homes make of this town of all towns most desirable. Ask the people who live there and they will tell you. Call on us and we will show you the following and many others:

50 ft. lots on 6th East Street, from \$100 up.
50 ft. lots on 7th East.....\$525
75x150 feet to alley on Pine St.....\$600
25 ft. lots on Wilmington Avenue for \$225 up.
75x150 ft., 9th East.....\$700
4x12 rods Ashton Ave.....\$500
5x12, 7th East St.....\$1000
New 4-room brick, complete plumbing, electric light, cement cellar, screened porch for the low price of \$2500; \$500 cash balance like rent.

Cannon & Cannon
18 East South Temple St.

With
RETURN OF PROSPERITY
—Buy—
VERY CHOICE LOTS
Near Liberty Park.

(The Growing Locality).
Near 9th East and 10th South St. Just South of 31st Ward Meetinghouse we are offering some of the finest lots in southwestern part of the city. Go look at them tomorrow, then come and see us about buying.

MONDAY.
20x157 to alley, only \$650.
SOME OTHER CHOICE LOTS.
Near the Park
Building Sites.

75x150 ft. to alley—\$400. City waterworks, 8000 gal. in, East and West front, 25 cash down, balance \$10 per month, low interest.

MAKE YOUR SMART NOW.
OWN SOMETHING.
RETIRE WITH A LOT.

A GREAT VALUE. V. OF HOMES
Now close by the city. Go look at a better selection of homes than those we offer for sale.

SMALL HOMES.
MODERN HOMES.
EXTENSIVE HOMES.
Just to your liking.
Do business anyway.
LITTLE DOWN.
MUCH DOWN, or
ALL CASH.

COME AND SEE US.

Ashton Jenkins Co.
73 Main St.
2012 Bankers.
Buy from us at first price.
No Commission.
NO RED TAPE.

THINK OF IT!

5-acre farm near Driggs, Idaho, with 50 shares of water, 40 acres having been cultivated, worth fully \$2000, but will be sold at the low sum of \$1200. See 8-room new brick house, lot 50 ft. by 12 rods. A genuine bargain.

George Q. Cannon Realty Co.
11 Main St. Phones 194.

SACRIFICE IN FIRST AVE, 2-ROOM P. H. residence, 33x150 ft. Owner must have money and must sell, \$2500.

HALLORAN-JUDGE CO.
309 Main St. Phones 323.
V. A. Bettilyon, Mgr.

K

THE LATEST
Burton Place
SECOND EDITION

R

STATE STREET		ALLEY		BURTON AVENUE		AVENUE	
50	60 1/2	50	41	41	41	41	50
51	61	51	42	42	42	42	51
52	62	52	43	43	43	43	52
53	63	53	44	44	44	44	53
54	64	54	45	45	45	45	54
55	65	55	46	46	46	46	55
56	66	56	47	47	47	47	56
57	67	57	48	48	48	48	57
58	68	58	49	49	49	49	58
59	69	59	50	50	50	50	59
60	70	60	51	51	51	51	60
61	71	61	52	52	52	52	61
62	72	62	53	53	53	53	62
63	73	63	54	54	54	54	63
64	74	64	55	55	55	55	64
65	75	65	56	56	56	56	65
66	76	66	57	57	57	57	66
67	77	67	58	58	58	58	67
68	78	68	59	59	59	59	68
69	79	69	60	60	60	60	69
70	80	70	61	61	61	61	70
71	81	71	62	62	62	62	71
72	82	72	63	63	63	63	72

ONLY 100 LOTS
THE BEST ON THE MARKET, FOR THE MONEY.

EAST SIDE OF STATE STREET, BETWEEN 12TH AND 13TH SOUTH.
Less than a city block south of Hollywood tract.
The prices are so low that a good profit on the purchase price may be realized in the spring, and the location is right in every respect for homes.
A building restriction that will maintain a good and first class neighborhood will be enforced, so that all purchasers will have protection and assurance that the value of the subdivision will grow very rapidly.

AVERAGE PRICE \$170.00
PER 25 FOOT LOT.

LOTS FACING NORTH OR SOUTH, on the avenues, are improved by the best of cement walks, graded streets and shade trees.
ON THE CORNERS OF EACH AVENUE, fronting State Street, beautiful cement monuments will be erected. They will be about 10 feet high, and will lend quality, tone and distinction to the subdivision.
SEE HOLLYWOOD TRACT.

STATE STREET FRONTAGE is very choice and promises to be of great value in the near future. The other day a piece 40 feet wide on State Street, near 7th South, for \$100 a front foot. State Street is eight rods wide, and eventually will be macadamized through to Murray. Fine large shade trees are in the watermain's pass; cement walks are being laid, and everything placed in the best of condition. These things make it very desirable.

TERMS ARE SO EASY THAT NO ONE NEED HESITATE. \$10.00 DOWN AND EASY MONTHLY PAYMENTS.
SALT LAKE IS GOING SOUTH. BUY WHERE THE GREATEST PROGRESS IS BEING MADE—WHERE EVERYTHING IS NEW. WHERE YOU MAY MAKE A NEW HOME, WITHOUT MUCH COST, AND REALIZE LARGE GAINS ON YOUR MONEY.

Here is your opportunity. This is the place. More lots have been sold in this locality during the past summer than in all other part of Salt Lake combined.

NO SPECIAL TAXES TO PAY. NO CITY TAXES TO PAY, AND ONLY 15 MINUTES FROM CITY AND COUNTY BUILDING.

THE CAR SERVICE IS FINE.
WHERE ELSE CAN YOU DO SO WELL?
BUY WHILE YOU MAY.
SEE

K Kimball & Richards, R
LAND MERCHANTS
20 MAIN ST. PHONE 392.

STOP!

Snaps like these are not offered every day! Now you want a home, or you want a good investment in lots. We know this is the best offer you will have from anyone. Ground in this vicinity has been snapped up long ago, and now you know that the East is the center of attraction for homes. We know and you know that the East is the center of attraction for homes. Now, then, we have 12 lots on 10th East, corner of 5th South. The seven in-Now, then, we have 12 lots on 10th East, corner of 5th South. The seven in-Now, then, we have 12 lots on 10th East, corner of 5th South. The seven in-

12TH EAST		13TH EAST		14TH EAST		15TH EAST	
41 1/2	41 1/2	41 1/2	41 1/2	41 1/2	41 1/2	41 1/2	41 1/2
122	122	122	122	122	122	122	122
41 1/2	41 1/2	41 1/2	41 1/2	41 1/2	41 1/2	41 1/2	41 1/2
115 1/2	115 1/2	115 1/2	115 1/2	115 1/2	115 1/2	115 1/2	115 1/2
\$550	\$550	\$550	\$550	\$550	\$550	\$550	\$550

Don't pay rent all your life, make a start now and make money.
Salt Lake Real Estate & Tide Co.,
No. 50 Main St. Phones 704.
ABSTRACTS, INSURANCE, LOANS, ETC.

TWO GOOD LOTS, CORNER OF F and 7th Avenue, fine location, beautiful view of city, a bargain. Enquire of owner, 222 F St.

FOR UNIMPROVED FARM LAND 15 per acre, 14 miles south of city, A. L. Scott, 311 5th East.

WILL SELL YOU AT A BARGAIN, vacant lots, a cottage or a model house, in any part of the city. James K. Shaw & Co., over 133 Main Street.

IF YOU HAVE PROPERTY TO SELL, list with Cannon & Cannon, 18 E. S. T.

COTTAGES

Beautiful Modern Cottages.
Now is your chance to buy a home and save rent.

3 new 4-room pressed brick cottages, electric lights, porcelain bath tub, basin and toilet, clothes closets and cellar 6 feet deep; lot 14 feet deep to alley. On 4th East Street, below 9th South, on high, dry ground, 15 minutes walk from City and County Building, on Waterloo car line. Price, \$2500 each; terms \$250 cash and balance same as rent.

Hoffman Bros.,
62 1/2 W. 2nd South Street.

EARDLEY & BALL
219 Main St.

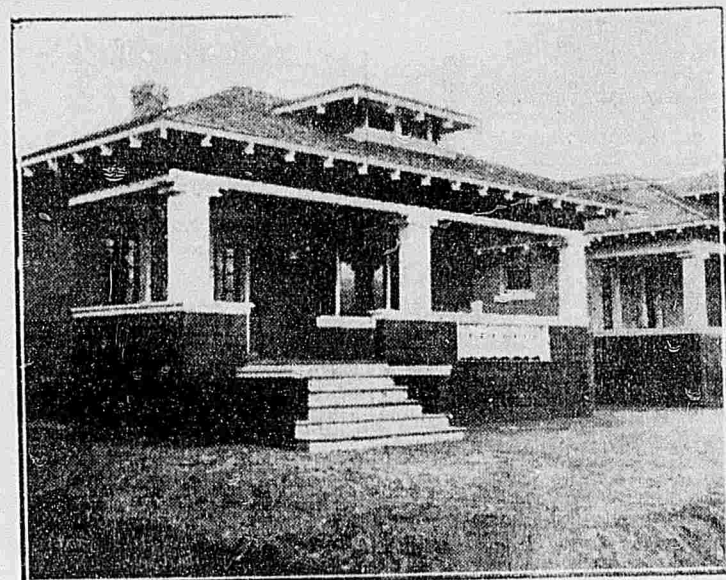
\$2500—Here's a dandy fine 5-room brick modern home, on 10th East near 4th South. It's good.

\$1500—Well, sir, for a 6-room cottage, near Liberty Park, we've a prize winner. See us anyway.

\$1500—Just 1 1/2 blocks from City Building, 5-room buff brick, one year old. Lawn, shade, cement walks. Looks good!

"We Sell The Earth"
at
219 Main

FOR BARGAINS IN REAL ESTATE SEE
ANDERSON-CUMMINGS CO.,
317 South Main St.



A pretty home on North Bench, \$1000; \$100 cash balance like rent. When you are tired of throwing away money for rent and conclude to lay foundation for happiness and contentment in old age, we can help you very much to attain this end.

Halloran-Judge Co., 309 Main St.
V. A. BETTILYON, Mgr. PHONES 323.

H. S. Anderson, Notary. DON'T BE A KNOCKER. M. L. Cummings, Notary.

ANDERSON-CUMMINGS CO.,
REAL ESTATE AND MORTGAGE LOANS.

Farms, Irrigated Lands & Dry Farming Lands our Specialty
317 South Main Street. Phones: Bell 489-4. Ind. 123.

Growth of Salt Lake. Here is what Mr. Harriman has to say: "With so much going on nearby, Salt Lake City is, of course, growing tremendously. It is believed by many careful observers that owing to the enormous and rapidly increasing developments of Utah, Idaho, Nevada and other surrounding territories, the city of Salt Lake will, within a few years, become the most important city between the Mississippi river and the Pacific coast. To accompany this development, the Harriman lines are now spending about \$1,500,000 in Salt Lake City. The company is to build about 25 miles of siding here, as well as a freight house, some 600 feet long. A passenger station to cost \$200,000 is also being erected."

Now is the time to buy real estate.

12TH AVE.		K STREET	
41 1/2	41 1/2	41 1/2	41 1/2
125	125	125	125
41 1/2	41 1/2	41 1/2	41 1/2
115 1/2	115 1/2	115 1/2	115 1/2
\$175.00	\$175.00	\$175.00	\$175.00

Here is a Chance for a "Nest Egg."

These lots are situated on the 11th Ave. Boulevard with a gradual slope and about two feet above the grade of the street. We are offering them at wholesale prices and invite your inspection. Money invested in these lots will increase in value at least 12 per cent per annum, which beats loaning your money out on first mortgages, as you can not get more than eight per cent. We will make you very easy terms on these lots. Remember they are two and one-half rods by seven. You don't need two lots to build a house on. The car line is on 8th Ave. which will be next spring.

We have many other bargains on our list in farms and city property. Come in and see us.

ANDERSON-CUMMINGS CO.,
317 South Main St.

RANCK ADVICE ON EARTH.
Suite 222 D. F. Walker Bldg. 212 by 5 rods, \$325.
On cut street near Third West and Third North. Terms can be had if desired.

110 by 125 Ft. Corner Lot.
On Third East, near Eleventh South, city water and sidewalk, only \$200.

For \$1800.
Lot three by six rods, with five-room house, sewer and sidewalk, tax paid, on East 24th South. Terms can be arranged.

For \$2150.
Will sell a new four-room mod. pressed brick cottage, lot 25 by 140 ft. to alley. Terms easy. Southeast, one-half block from car.

New five-room modern brick cottage, southeast, sewer and sidewalk, tax paid, all complete, only \$2500; easy terms.

If we knew what you were looking for we would advertise it.
RANCK REAL ESTATE & INV. CO.,
Suite 222 D. F. Walker Bldg.
WE HANDLE EARTH.

Everything on the Square
\$2200—New 2-room brick, mod. N.E.
\$2500—New 2-room brick, mod. S.E.
\$2500—New 4-room brick, mod. S.E.
\$2500—New 4-room brick, N.E.
\$2500—6-room brick, lot 25x15 rods, 6th East.
\$2500—Store, warehouse, etc. So. Tem. Lots in all parts of city. \$200 and up.

Thomas Alston,
"The Square Dealer."
124 Atlas Block.

UP-TO-DATE HOMES
5, 6 and 7 ROOM BRICK BUNGALOWS, 5th Ave. and J St. and 8th Ave. and K St., overlooking the city. Complete in every detail. Models of design and construction. Prices right. Terms easy.

MODERN HOME BLDG. CO.,
421 Dooly Bldg. Bell Phone 3212.

South East Bargain
5 NEW WHITE BRICK, E. L. CITY water, 32x150 to alley, \$1200. Terms.

T. E. ROWAN REALTY CO.
C. H. DOWSE. J. P. MORRIS.
Ind. 327. Bell 227.

INTER-MT. REAL ESTATE EX-CHANGE
Ind. 914. 31-32 Eagle Bldg. Bell 2554.

FOR SALE BY ESTATE BROKERS COMPANY, BEAUTIFUL FEDERAL HEIGHTS LOTS.
Looking down that princely boulevard—East South Temple St.—looking with an unobstructed view on the grandest portion of the Wasatch range, looking on the beautiful college campus buildings of the University of Utah, and looking out over the entire Salt Lake Valley, with its cities, villages and farms.

These most desirable of residence lots are being sold fast. See us quick and thereby have a choice of location. Prices are right. Terms, too. We have money for building loans. Lowest rates.

SEE
TUTTLE BROTHERS COMPANY,
BOTH HOMES 72.

SEE HOUSTON, THE HOUSES, 23 Main Street.

FOR REAL ESTATE, LOANS AND RENTALS SEE F. T. DODD, The Salt Lake Bargain Man, Rooms 12 and 13 Commercial Block Ind. Tel. 124 and 234.

1250—Chicken ranch with a 5-room house, coops, incubators, brooders, etc. close in.
\$500—A 2-room house, \$150 down, and \$10 per month.
\$2500—Buys a nice 6-room brick, S.E. large lot, \$225 down balance \$20 per month.