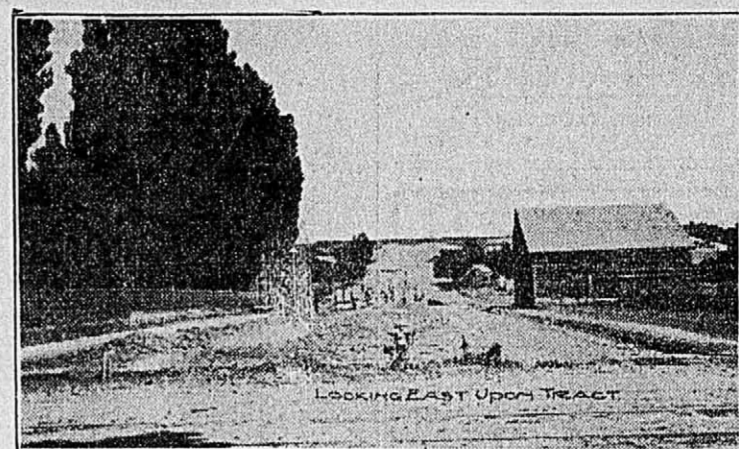


Have a Country Home in the City



Premier Residence Property

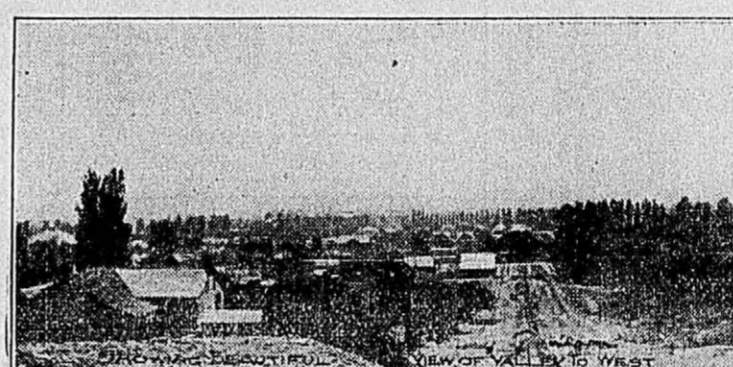
ELEVENTH EAST CAR LINE
One Block North of 10th South St.



VALLEY VIEW ADDITION

BEST IN THE SOUTH EAST.

Within one block of Emerson School—on excellent car line—cool breezes from three canyons—four blocks from city's largest park—15 minutes from city



Water Mains
Graded Streets
Cement Walks
Curbs and
Gutters

BUILDING SITES 40' X 160' TO ALLEY.

Eyes of America
on Salt Lake.

\$50 to
\$100
Cash

\$750 each
and up

Balance
\$15 per
Month

Salt Lake's best
Investment.

Low Interest. BUILDING RESTRICTIONS.

All the beauty of the country with facilities of the city.

You cannot miss it—whether for a home or
an investment these lots are unexcelled.

The early investor reaps the biggest harvest.

ASHTON-JENKINS CO.

47 Main Street.

Phones 907.



HILL CREST LOTS

Have seven times as much land as is had in lots in other subdivisions. The location is beautiful and not far from the street car. First class water rights. Prices for Hill Crest lots, \$50 and up. Terms \$25 cash, \$15 per month. Call on or write to

CANNON & CANNON

18 E. So. Temple St

Beautiful Idlewild Addition

At the terminal of the Sugar House car line.

ONLY A FEW LOTS LEFT.

Your last chance to secure a lot at present prices, as all lots will be advanced 25 per cent Aug. 1.

Our auto is at your service at any time.

The best bargains ever offered for in-side property.

Lots from \$100 to \$300.

\$10 down and \$5 a month.

A. N. Humphries

73 W 2nd South St.

\$125

BUYS A LOT

EMPIRE ADDITION.
\$5 DOWN, \$5 MONTH.
Other snaps in real estate.

HOWELLS & BAILEY.

Bell 4560 Home Fire Ins. Bldg.
(Z. C. M. I. is just opposite.)

Snap

SNAP for any one that wants a 3-room brick house, modern in all ways, including steam heating plant, \$210 ready, trees, shrubbery, good barn, corner, located on north bench, close in. \$2250. Terms.

HALLORAN-JUDGE CO.

309 Main Street.
V. W. Bettilyon, Mgr. Phones 322

8 acres near 14th South on 6th East, with splendid 5-room house for \$4200.

In same locality 2 acres and good brick cottage for \$2500.

Both of these properties are worth more money but owners are anxious to sell as their interests call them elsewhere.

\$400 per acre for very choice 6-acre tracts East on 13th South; 1/2 cash balance 6 per cent.

A RICHTER

19 West 1st South St.
Phones 641.

SEE HOUSTON, THE HOUSER. 251 Main Street.

National Real Estate Co.,

311 Hooper Bldg.
Phone 147 or 333 Bell. Make an appointment.

8-room brick, choice, for \$5,200.00.

Nice building lots.

Good investments.

Give us a call.

NATIONAL REAL ESTATE CO.

F. M. Lyman, Jr., Mgr.

Ind. 334. Bell 4153.

National R. E. & Inv. Co.

26 1/2 Main Street (Upstairs).

Choice building lots on northeast and southeast bench.

HOME BUILDERS, EASY PAYMENTS.

W. T. Atkin. Theo. Toblason.

WE WILL SELL THE EARTH AND

a home if you want to buy. If you want

to sell, we will find a buyer. We write

fire insurance and loan money. Call and

figure with us.

Home Agency Co.

INC.

49-50 Commercial Block.

We Want Your Business

Nice building lot, sewer, sidewalk, and

pavement paid, only \$1200. Terms.

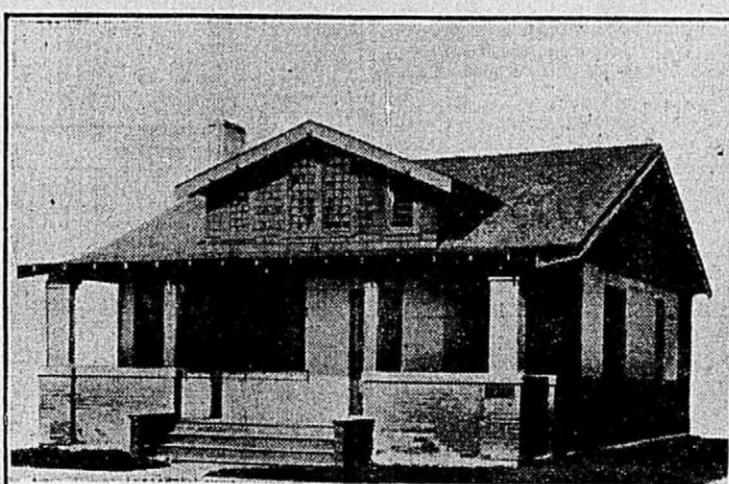
Danley and Johnson

Both Phones 4426. 30 West 3rd South.

Ground Floor, Not Upstairs.

CHEAP, BY OWNER, LITTLE

home, Waterloo, 3-room frame, pantry,



The handsome bungalow pictured above is one of our modern houses on Hamilton Place. They may be purchased for cash or on the installment plan, which means a comparatively small initial payment and monthly payments less than rent would be.

Hamilton Place is close to the city and county building and to the business district, running north from Sixth South Street between State and Second East Streets.

The handsome bungalows in Hamilton Place were especially designed for homes. They are fitted with every modern convenience and have the wide porches that make living comfortable in the summer time.

Lawns, paving, cement sidewalks, sewer connections and gas mains are all in, and all houses are supplied with gas for cooking and electric lights.

These houses may be purchased from us or from any first class real estate dealer in the city. Prices—\$3,000 to \$3,700, according to location.

Salt Lake Security & Trust Company,

33 UP. MAIN ST.

PHONES 142

VALUES ARE ADVANCING.

The many elements contributing to a city's growth indicate that Salt Lake City will continue for many years to increase at the rate it has for the past five years. This will mean further increase in real estate values. Have you property that will increase? Do you own a home? If not procrastinate no longer but buy at once.

HOUSES.

\$800—A tidy little cottage, with trees, flowers, near car line, in southeast.

\$750—A three-room frame house, a nice screen porch, lot 50x125 to alley, half a block from street car line and paved sidewalk.

\$1000—A 4-room frame cottage, lot 50x140, sheds, trees, fence, etc. Near to car line and schools on west side.

\$2400—A pretty 4-room brick cottage, summer kitchen, barn, fence, trees, lawn, lot 62 1/2 x 115 feet to alley. On Seventh East care line; \$250 cash, balance arranged for easy payments.

\$2000—A new neat 4-room brick residence, within 8 1/2 blocks of P. O. with cement sidewalks and all modern improvements. Lot 40x158 to alley.

\$3150—A new 5-room modern buff brick residence, near 9th South and 10th East Streets. Car line less than 1/2 block away. Easy terms arranged.

\$2800—Two fine new buff brick residences, all modern, with fine lots, 10th East and 11th South. Very easy terms arranged.

Many fine homes at all prices in all sections.

LOTS.

\$450—A few choice lots, 37 1/2 x 115 to alley. Cement sidewalks and city water. Within 8 1/2 blocks from P. O. Good car service. Only \$25 cash, balance \$10 per month.

\$500—A choice Northeast Bench corner, facing South and East on 19th Ave. and I Street, 4 1/2 x 115 to alley. Very easy terms.

\$3500—A very fine lot, 45x115 feet to alley, facing North and East on corner of 8th East and 6th South Street. Can be sold on very easy terms.

Burt & Carlquist

WE

Have a few choice lots at \$125; \$5 down; \$5 per month.
Can sell your property.
Can rent your house.
Have some snaps listed with us exclusively.

HOWELLS & BAILEY,

26 1/2 South Main.

Z. C. M. I. IS JUST OPPOSITE.

COLLEGE VIEW ADDITION.

Best location on the East Bench, 1200 feet from Westminster College. Lots on easy terms, \$15 to \$250 each; \$10 cash \$5 per month.

MEYER & MCCARTNEY.

4 W. 2nd South.

5-ROOM BRICK COTTAGE, NEAR

Wanderer, Ind. Phone 11801.

WILL SELL YOU AT A BARGAIN

vacant lots, a cottage or a model house

in any part of the city. James K. Shaw

& Co., Suite 300 D. F. Walker Bldg.

8-ROOM BRICK, CHEAP. TERMS

Call 115 North 1st West.