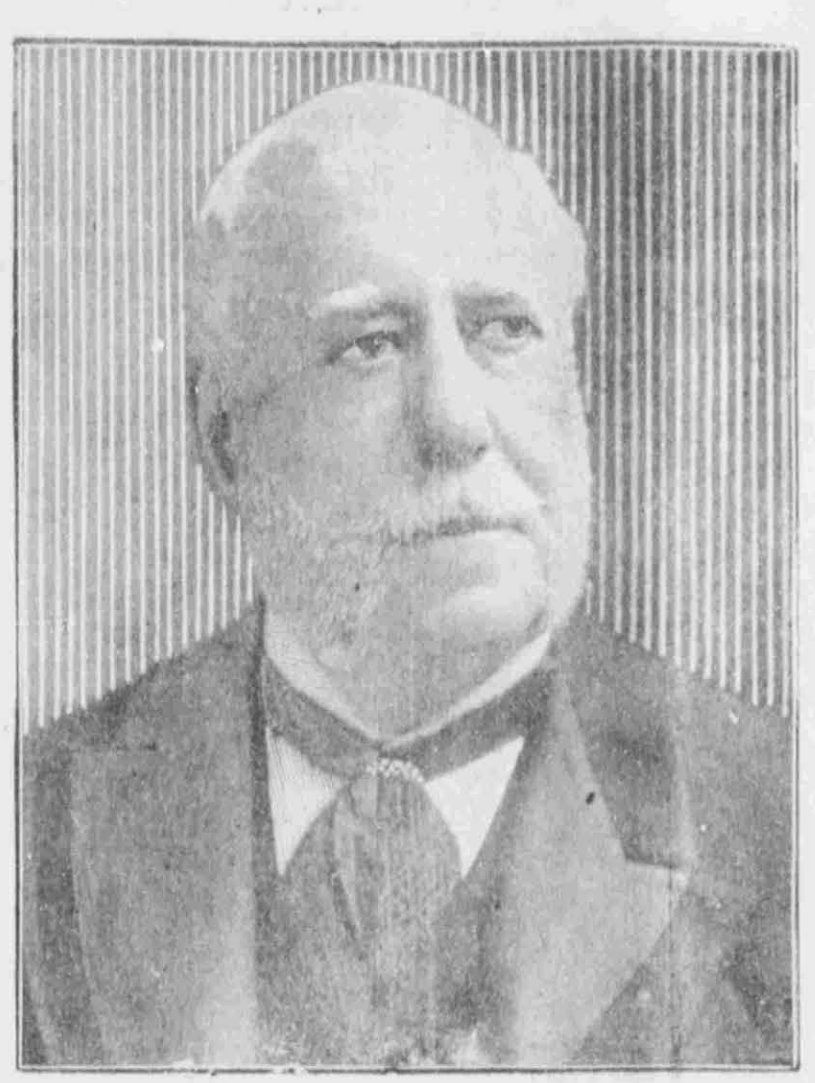


JAPAN'S ARMY AND NAVY.

Ships Which Ranked at Top of Japan's Naval List in War With China are Now at Bottom, while Magnificent Battle Ships and Cruisers Bring Total Strength to Level With That of Great Powers—Strong and Carefully Drilled Army, With Officers Trained in Best Military Schools of Europe and America.

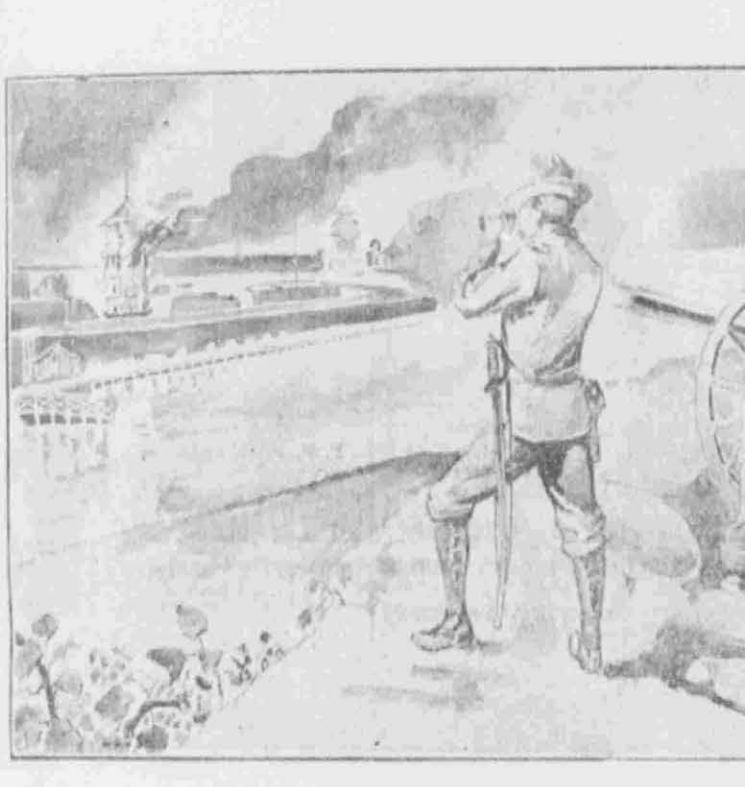
For several years the great Powers of the world have been expecting a great naval contest in China, in an international crisis in which the Pacific would be the scene of a struggle for supremacy. It was at such an hour that Japan, with her fleet of battle ships and cruisers, was to appear. The fleet which was to appear was to be a fleet of the most magnificent battle ships and cruisers which the world has ever seen. It was to be a fleet which would be the equal of the fleets of the great Powers. It was to be a fleet which would be the equal of the fleets of the great Powers. It was to be a fleet which would be the equal of the fleets of the great Powers.

LORD PAUNCEFOTE.



British ambassador at Washington, conferring daily by wire and mail with President McKinley concerning affairs in the Orient.

BRITONS BOMBA DING TONG-KU.



Unhappily China at home and on the sea. The British fleet, which was to appear, was to be a fleet of the most magnificent battle ships and cruisers which the world has ever seen. It was to be a fleet which would be the equal of the fleets of the great Powers. It was to be a fleet which would be the equal of the fleets of the great Powers. It was to be a fleet which would be the equal of the fleets of the great Powers.

NEW YORK TO CHICAGO IN ONLY FIVE HOURS.

Proposed Electric Line to the Windy City, on Which Projected Passenger Cars, Built of Aluminum, It is Promised Will Make the Remarkable Speed of Two Hundred Miles an Hour—To Test Feasibility of This Astonishing Rapid Transit Scheme, Projectors Say They Will Construct a Model Road from Philadelphia to Atlantic City.

Five hours from New York to Chicago. That is what the American Railway company officials say they can do with passenger, mail and express traffic. Two hundred miles an hour. That is what they claim for their new transit scheme. Projected passenger cars, built of aluminum, it is promised will make the remarkable speed of two hundred miles an hour. To test feasibility of this astonishing rapid transit scheme, projectors say they will construct a model road from Philadelphia to Atlantic City.

TEACHERS IN MISSION SCHOOL, PEKIN.



Minister Conger's private parlor in the American Legation building at Peking. In this daily drawing room was, for a long time believed to have been enacted a scene exceeding in horror the worst sights of the French Revolution.

YOU LONG.



This physician, general, You Long, according to Dr. Gao Wu Chan, the Chinese physician now living in Chicago, is the able executive of the Chinese medical society. He is the head of the entire Chinese medical society. He is the head of the entire Chinese medical society. He is the head of the entire Chinese medical society.

CONGER'S PARLOR AT PEKIN.

Minister Conger's private parlor in the American Legation building at Peking. In this daily drawing room was, for a long time believed to have been enacted a scene exceeding in horror the worst sights of the French Revolution.