

THE KITCHEN.

An Article on the Arrangement and the Construction of the Kitchen in the Deseret News, by American Press Association.



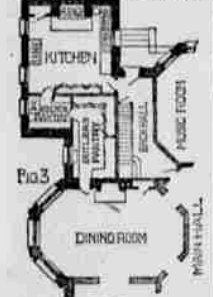
The conditions under which a kitchen should be built are of the greatest importance, and that the plan for a kitchen should be made before the plan for any other living room.

The first essential feature is a good cooling range, with water tank and a heavy copper boiler of not less than forty gallons capacity.



There should be two separate hot and cold water pipes provided for ventilating a kitchen, and carrying off the fumes and smoke of the cooking.

The floor of a kitchen should be of hard wood, and be laid in such a way that it can be easily cleaned and washed.



It is especially an exceedingly good plan to have a sink in the kitchen, and a cold water pipe leading to it.

Large Water Pans Show the Way. Here are sometimes placed down and forward by the lower rim of a hot stove.

LOCATING ORCHARDS.

The benefits of local orchards—Methods of Planting.

In his valuable paper on horticultural and arboriculture, published by the U. S. Department of Agriculture, Washington, the following is given:

From the circumstances that fruit orchards which are situated in valleys and in low positions are generally more healthy and productive, it is very desirable to locate them in such places.

It is a common observation that the soil near the water is generally more fertile than the soil in the higher parts of the valley.

It is a common observation that the soil near the water is generally more fertile than the soil in the higher parts of the valley.

It is a common observation that the soil near the water is generally more fertile than the soil in the higher parts of the valley.

It is a common observation that the soil near the water is generally more fertile than the soil in the higher parts of the valley.

It is a common observation that the soil near the water is generally more fertile than the soil in the higher parts of the valley.

RAILROADS.

Utah Central Railway TIME TABLE. To Effect April 1st, 1891. Passenger Trains will Run Daily, for Salt Lake and Park City, as follows:

Rio Grande Western Railway. STANDARD GAUGE. CURRENT TIME TABLE. In Effect Saturday, August 1, 1891.

Table with columns for Station, No. 1, No. 2, No. 3, No. 4, No. 5, No. 6, No. 7, No. 8, No. 9, No. 10.

For further information call on or address W. W. ANDERSON, General Agent, Salt Lake City, Utah.

SKINC LINE OF THE WORLD! Denver & Rio Grande Railroad TWO SUPERBLY EQUIPPED TRAINS DAILY.

WESTERN BILL POSTING COMPANY. (Incorporated) The Only Bill Posters, Distributors of Railroad Advertising Agents in Utah.

CALIFORNIA ELECTRIC CURE FOR CATARRH. Rheumatism, Neuralgia, Corns, Headache, Toothache, and all other ailments.

THE CRY OF MILLIONS. OIL MY BACK! I WILL BE SOON LATE. I have been troubled many years with rheumatism...

BARTON & CO PLEASE NOTE. WE HAVE

REMOVED 43 and 45 MAIN STREET.

BACK TO OUR OLD STAND, 43 and 45 MAIN STREET.

Clothing, Hats and Gents' Furnishings ALL NEW SINCE THE FIRE.

BARTON & CO 43 and 45 MAIN STREET.

H. DINWOODEY FURN. CO.

FURNITURE, CARPETS, WALLPAPER, REFRIGERATORS, BABY CARRIAGES, RUGS, LINOLEUM, CURTAINS, DRAPERIES, DOOR MATS.



H. DINWOODEY FURN. CO. See Our Mammoth Show Windows.

MISS POLLY GOLIGHTLY HAS DOZENS OF BEAUX THE REASON WHEREOF I WILL TELL YOU. IT IS NOT BECAUSE OF HER BEAUTIFUL CLOTHES, BUT SHE'S LEARNED HOW TO COOK ON THOSE CHARTER OAK STOVES THAT'S HOW SHE BECAME SUCH A BELLE! FOR SALE BY Z. C. M. I., Sole Agents in Salt Lake City



A Warning To Horse-Owners.

The Utah State Fair is now open and it is a great pleasure to see the many fine horses that are being shown.

THE UNITED STATES GOVERNMENT protects the person of every citizen, and it is the duty of every citizen to protect the person of every citizen.

DEEDS AND MORTGAGES. Conformable to latest Territorial Statute for sale at the DESERET NEWS OFFICE.



Home Comfort Ranges. Have No Equal for FAMILIES, HOTELS, MINING CAMPS, ETC.

UTAH STOVE & HARDWARE CO. BALT LAKE CITY, UTAH. CHARLES ELLIS' GREAT LECTURE ON THIS SUBJECT IS NOW IN PRINT.

UTAH '47 to '70. Good paper, large type and excellent with much to be learned by all.

ADVICE TO HOMEOWNERS. Mrs. Wheeler's Receipts for the cure of rheumatism, neuralgia, corns, toothache, and all other ailments.

Lumber Yard. All kinds of Lumber, Frames, Doors, Sash and Mouldings on Hand. BUILDERS' HARDWARE. Telephone No. 502. Planing Mill. Buildings Erected. Contracts Given. Steam Mill Work a Specialty. Satisfaction Guaranteed.

WHY THE DESERET NEWS SHOULD BE SUBSCRIBED FOR IN PREFERENCE TO ANY OTHER PAPER.

1. It is the Organ of the Church of Jesus Christ of Latter-day Saints, and the authorized medium through which the views, wishes and instructions of the Church Authorities are expressed, and given to the world.

2. It is the only paper published in Salt Lake City, Utah, which is published for the people, and never has been, but for the good which it is capable of accomplishing.

3. It is the only paper published in Salt Lake City, Utah, which is published for the people, and never has been, but for the good which it is capable of accomplishing.

4. It is the only paper published in Salt Lake City, Utah, which is published for the people, and never has been, but for the good which it is capable of accomplishing.

5. It is the only paper published in Salt Lake City, Utah, which is published for the people, and never has been, but for the good which it is capable of accomplishing.

6. It is the only paper published in Salt Lake City, Utah, which is published for the people, and never has been, but for the good which it is capable of accomplishing.

7. It is the only paper published in Salt Lake City, Utah, which is published for the people, and never has been, but for the good which it is capable of accomplishing.

8. It is the only paper published in Salt Lake City, Utah, which is published for the people, and never has been, but for the good which it is capable of accomplishing.