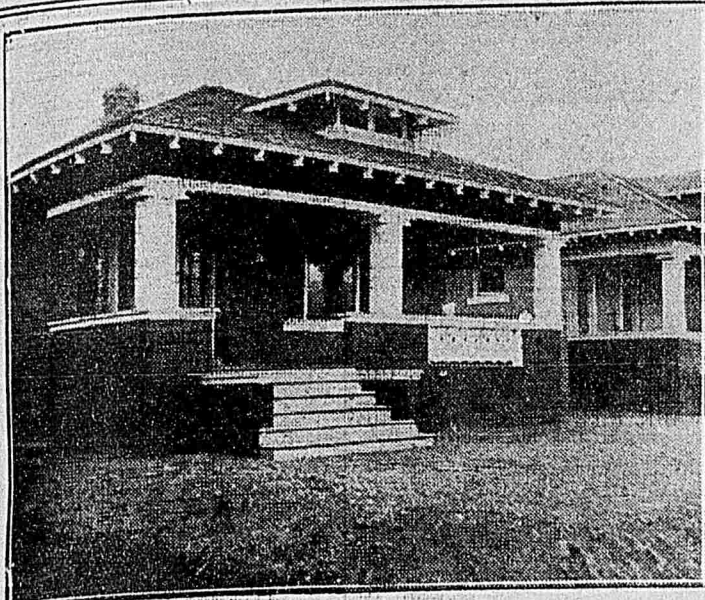


Good Homes and Lands at Modest Prices



THIS 5-ROOM BRICK BUNGALOW ON NORTH BENCH, FACING SOUTH, modern E. T. furnace, paneled ceiling, hardwood floors, Mission finish. Price, \$300. We write FIRE INSURANCE.

HALLORAN-JUDGE CO.,

30 South Main Street. V. A. BETTILYON, Mgr., Phones 823.

JUST SNAPS.

NORTHWEST

1500—4-room modern, \$200 cash.
1150—4-room part mod., \$200; \$15 per mo.
1000—4-room modern, \$200; \$15 per mo.
800—4-room modern, \$200; \$15 per mo.

SOUTHWEST

4-room modern, only \$250; \$50 cash.
6-room modern, only \$300; \$50 cash.
8-room modern, only \$350; \$50 cash.

NORTHEAST

1500—4 rooms, light pressed brick, modern.
1400—4 rooms, modern 5 rooms.

SOUTHEAST

ALL NEW.
4-room modern, \$200; \$30 cash, near Liberty Park.
6-room modern, \$250; \$50 cash, near Liberty Park.
8-room modern, \$300; \$50 cash, near Liberty Park.
10-room modern, \$350; \$50 cash, near Liberty Park.

BUTTERWORTH-WRIGHT.

55 Main St. Both Phones.

Beautiful Modern Cottages.

Nothing like this ever offered before. Look at these before you buy:
New 4-room brick cottage, electric lights, bath, toilet, dry cellar, 6 feet deep; cement walks, lot 31x115 feet, east end on 4th West between 6th and 7th South Street, only \$200; small cash payment and balance same as rent.

Hoffman Bros.,

62½ W. 2nd South Street.
SNAPS.
Always look in this space for SNAPS.

BAIRD CARLSON INVT. CO.,
Bell 3801.
11 West 2nd South St.
6rm. mod. brick, \$200, like rent.

ARE YOUR HANDS TIED BY PAYING RENT?

THEY NEED NOT BE WHEN YOU CAN BUY A NEW MODERN HOUSE ON A SMALL CASH PAYMENT AND EASY INSTALLMENTS. BUY NOW AND MOVE INTO A NEW HOME BEFORE WINTER COMES.

HOUSES.

New 5-room red pressed brick house, hall, pantry, closets, bath, etc., basement, porch, large lot, No. 102 South Lake Street, between 7th and 8th East Sts., South 9th South, Easy payments, \$3200.

New 4-room yellow pressed brick, hall, pantry, closets, bath, etc., choice lot, No. 980 Belmont Ave., between 9th and 10th East, South 9th South, Easy payments. Only \$2750.

Well kept 2-room brick and 2 room frame, pantry, closets, etc., large lot, fenced, splendid flowing well, trees, Steffenson Ave., between 3rd and 4th East. Only \$1500; cash \$150, balance \$15 per month.

LOTS.

A large selected list of choice lots in all sections, all sizes, all prices, terms to suit.

ACREAGE.

5 acres choice bench land, good water right, 18th East and 12th South. Street car service three blocks away. Only \$300.

FARMING AND FRUIT LANDS.

DAVIS COUNTY.

10 acres choice land, full water right, 1 acre orchard, 6-room brick house, milkhouse, cellars, barn, etc., between Bountiful and Centerville. Only \$2750; cash \$500, balance very easy terms.

New 4-room yellow brick house, brick cellar, ½ acre land, good water right. Fruit trees, ½ block from station. Just place for some one who wants to live in the country and work in the city. Only \$1750.

3-room frame house, 11-3 acres land, good water right, 100 bearing fruit trees, ½ block from station. Bountiful. Only \$1300.

3-room brick house, 1½ acres ground, flowing wells, 150 bearing fruit trees. Centerville. Only \$3000.

DAN MUIR,

WOODS CROSS. BELL 90-4.

UTAH COUNTY.

120-acre farm, 40 acres very best farm land, 40 acres not broken, 40 acres fine meadow, independent water right, three flowing wells, 8-room house, barns, granary, wagon and machine sheds, farm implements. Owner has harvested \$2000 hay and grain per year besides other products. The owner has died and place must go at a great sacrifice. Only \$4500. Half cash.

HOME INDUSTRIAL PROMOTION COMPANY,

SPRINGVILLE.

BURT & CARLQUIST

REAL ESTATE, LOANS, INSURANCE.

NO. 7 SOUTH MAIN STREET.

BELL 2076.

IND. 2.

SALT LAKE CITY REPRESENTATIVES OF RELIABLE REAL ESTATE FIRMS IN UTAH AND IDAHO.

IF YOU WANT TO BUY IMPROVED real estate, choice building lots, small acreage within city limits, improved farms or dry farms at bottom prices, see us. We sell our own property, no commissions. B. A. M. FROISETH & CO., 28 W. 6th South St.

WILL SELL YOU AT A BARGAIN, vacant lots, a cottage or a model house, in any part of the city. James K. Shaw & Co., Over 153 Main Street.

IF YOU DESIRE TO BUY GOOD farms or homes cheap, anywhere in Cache Valley, apply to J. Z. Stewart, Logan, Utah.

EARDLEY & BALL

219 MAIN STREET.

SELL HOMES ON THE EASY PAYMENT PLAN.

WHY DO YOU PAY RENT?

SNAPS.

Beautiful home, all improved, with rolling lawn, fences, cement walks, etc., 6 large, cheerful, well arranged rooms, well situated, about a block from City and County building, good terms, \$3500.

Another charming home of 5 rooms, halls, etc., close neighbor to the one advertised above, terms, \$4200.

Beautiful, restful home of 5 rooms, handsomely furnished, thoroughly modern, with cement basement, cement walks, light board fence, about 3 blocks from City and County building, \$3500.

A brand new pressed brick home, about 3 blocks from Newhouse skyscraper, designed by well known architect and built in best style, cement walks, full basement, light board fence, cheerful, cozy, and right close in. Most liberal terms, \$3250.

Delightful and imposing new home, on E. St., near 8th Ave., well arranged rooms, with every little modern convenience, full basement, cement walks, etc., only \$5000.

Another one on E. St. near 8th Ave., 5 pleasant large rooms, new, newly papered, hauled, new screened windows and back porch, laundry tubs, cement walks, elegant neighborhood, terms, only \$4900.

We have two fine 5-room pressed brick homes, modern, near 4th South and 8th East, on good lots, facing on street, and both nearly new, terms if desired, \$2500.

A number of homes from \$1200, \$1500, \$2500, etc., on easy terms.

"Homes Not Houses."

We are special agents for

MOAPA VALLEY LANDS

1000 acres, all with full and permanent water rights, easily worth \$300 per acre, at from \$35 to \$200 per acre.

If you have a few hundred dollars what better than to buy stock in a large company holding 700 acres in the heart of Moapa Valley, with a good gardener in charge. Hugh Cannon, president of company, 1000 shares at par value of \$100 each. See us.

"We Sell the Earth."

We won't do any business on Labor Day unless we have to.

EARDLEY & BALL,

219 Main St.

BY OWNER

5-ROOM PRESSED BRICK, MODERN, walk, lawn, papered, walls one foot thick. A No. 1 home. Phone Bell Forest 12-k, or Forest 25-k.

FOR RENT.
622 South 2nd East, Modern House, New, 7 fine rooms and basement, \$30 per month.

SEE ASHTON & JENKINS, 73 MAIN ST.

W. J. LEAKER, 202 D. F. Walker Bldg., Phones 603.

On 10th East between 2nd and 3rd South, 2½x10 rods, and a 5-room house, for only \$2500.

On 5th South and 9th East, 5-room modern brick, sewer connected, gas, lot 40x115 to alley. Only \$3200.

On 6th East, near 6th South, a very neat 6-room house. Only \$1250.

Vacant lot 2½x10 rods to alley, on 1st South between 12th and 13th East. Only \$1500.

On 13th East between 2nd and 3rd South, 45x140 to alley. Only \$1500.

On 6th Ave. between Kand L. Only \$900.

I have bargains all parts of the city.

W. J. LEAKER, 202 D. F. Walker Bldg., INSURANCE. LOANS. Phones 603.

Railroad men notice—A NEW MODERN 4-ROOM PRESSED brick house, completely and elegantly furnished, large lot, at a mortgage price, why pay rent when you can buy this at \$400 cash and \$25 a month? See me at once. THOS. E. ROWAN, under Deseret National Bank, corner Main and First South Street.

CHOICE BUILDING LOT, CHEAP, 3x7 rods, fine location, at 1216 First Ave., between U and V St., make a bid.

LOTS. BUILDING LOTS. LOTS.

We have choice building lots for sale in all parts of the city, cheap, and on monthly payments.

HOFFMAN BROS., 62½ West 2nd South Street. Telephone 34.

I AM AUTHORIZED TO SELL A beautiful 5-room modern residence, on 3rd Ave., lot 2½x10, to R. of W. lawn, shade, \$5500. Terms, Exclusive agent. Enquire near No. 247 South 2nd West. Phone 4332 red.

CANNON

15 East South Temple Street.

DO IT NOW!

Start the foundation for a home of your own, \$50 cash, \$15 per month, will do it. Don't spend all you earn. Save a little each month, and later you will not have to work.

Don't pay rent. Make a small payment down and pay balance same as rent.

Houses, all prices, all parts of city; lots, all prices, all parts of city. Prices will never be lower. Call, we are pleased to show you.

We have business property on Main St., State St., West Temple, and on East and West Second South.

Why not see us about the best located piece of vacant property on West Second South?

HUBBARD INVESTMENT COMPANY, 66 W. 2nd South St.

IF YOU WANT THE BEST SECURITY on earth buy a small portion of the earth itself.

We can point you out an attractive, money-making proposition.

FOR RENT—10-ACRE FRUIT FARM, S.E. of city. Rent reasonable. Act quickly.

Call in and see us.

NATIONAL REALTY EXCHANGE CO., 73 West 2nd South.

Bell Phone 1475, Ind. Phone 941.

\$2400—New 5-room brick house at West Jordan, with 1 acre land, will trade for home in city.

\$8000—40 acres land at Sandy, with water, to trade for city property.

100 acres with water, at Pleasant Green, to trade for city property.

160 acres at Sandy, with water, 2 houses, barn, 3 horses, 2 wagons, 2 cows, plus chickens and other machinery, a barn for another house, 5th South and Park Ave.

6-room brick, southeast, \$2000; \$325 cash, balance easy.

See us to sell or trade your property.

75 acres, orchard, with good improvements, at Sugar House, will trade property on east side in exchange.

Bell Phone 225; Ind. 914.

Inter Mountain Real Estate Exchange.

32 Eagle Block.

Cheap Terrace.

Double house, two-story brick, 6 rooms on each side, full basement, por, bath, closets, lavatory, electric lights, sewer connections, cement sidewalks, beautifully papered and painted, corner lot, 6x100, 2 room for another house, 5th South and Park Ave.

LITTLE & LITTLE, No. 1 West Second South.

TWO CHOICE BUILDING LOTS ON F and 7th. Enquire of owner, 338 F St.

IF YOU HAVE PROPERTY TO SELL, list with Cannon & Cannon, 15 E. S. T.

IF YOU WANT TO SAVE MONEY IN Real Estate call on GEORGE E. ROONEY INV. CO., No. 275 Constitution Building, Phone 2500.

FOR REAL ESTATE, LOANS AND rental see J. T. Peadar, The Salt Lake Bazaar, Main Floor, 12 and 13 Commercial Block, Ind. Tel. 1224 and 2368.

WE SELL REAL ESTATE, SMITH & ERICKSON, 204 D. F. Walker Bldg.

WE SELL REAL ESTATE, THAT'S all, Tuttle Bros., red ball signs, 153 Main St.

FOR UNIMPROVED FARM LAND \$3 per acre, 14 miles south of city. A. L. Scott, 311 5th East.

FOR BARGAINS IN REAL ESTATE SEE ANDERSON CUMMINGS CO., 322 South Main St.

BEST GARDEN LAND IN UTAH, Dan Muir Woods Cross. Bell 604.

SEE HUSTON, THE HOUSES, 250 Main Street.

capped in having to pay duty. Each package is stamped thus:

McDonald's Royalty Brand, Milk Chocolate, It's Pure, J. G. McDonald Chocolate Co., Salt Lake.

GROWTH OF HOME INDUSTRY.

The story of McDonald's jump to the front as a chocolate maker has been phenomenal, and newspapers and magazines have printed it as illustrations of what merit, integrity and enterprise will do.

A year and a half ago, only McDonald was making all sorts of candies, all good, but none world beaters.

Then came the idea of making a candy, advertised, high priced candies of the east. And the east is eating Salt Lake candy, too.

Minnesota is eating as much Salt Lake candy as Utah does.

All the big cities sell as much McDonald candy as all the others put together. The local factory is being enlarged steadily to keep the supply up with the increasing demand.

And the enlargement must be made faster than ever now, with an exquisite milk-chocolate being turned out to coax the United States' favor from all other brands of this particular dainty.

More room, machinery and men are to be added to the McDonald factory as rapidly as possible.

TO OGDEN CANYON.

Lagoon route excursion, round trip including automobile to all canyon resorts \$1.50. To Ogden only, Sunday, \$1.00.

STATE'S FINANCES.

Treasurer Files His Report for August With the State Auditor.

The state treasurer has filed with the state auditor his report for the month of August last. It shows the receipts to have been \$312,246.04, of which \$222,732.06, was the balance on hand July 31. The disbursements amounted to \$139,975.43, leaving \$172,270.61 as balance in the various funds, as follows:

General fund \$ 5,708.88

State district school 22,142.10

Redemption fund 491.55

Sheep inspection fund 1,111.19

Trust fund 5,222.03

Forest reserve fund 10,525.97

Fish and game fund 17,243.14

Extinction of wild animals 314.54

Suspense account 8.91

Agricultural college 2,175.72

Deaf and Dumb asylum 5,552.50

Insane asylum 1,997.42

Blind asylum 1,510.82

Miners' hospital 15,159.58

Normal school 5,512.59

Reform school 2,274.11

Public buildings 17,538.55

Reservoir 27,337.93

State school 25,239.72

School of Mines 3,985.87

University 3,851.00

Peter of Vevey, World Famous Manufacturer of Milk Chocolates, Now Has a Rival Here.

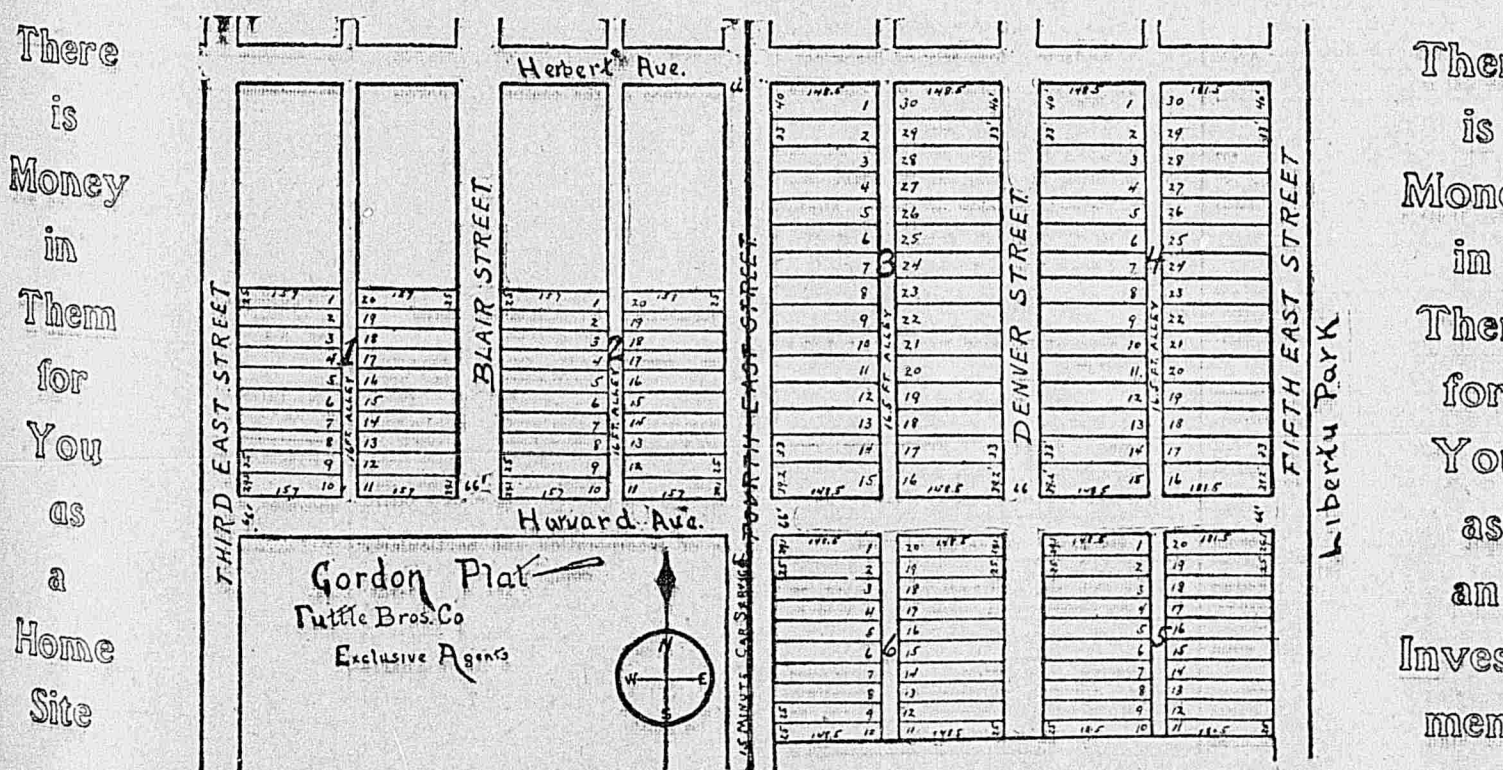
Salt Lake is about to supply the world with another product which not more than three cities in the world are able to produce. This is milk-chocolate, and the man who has made a reality out of what would have been to the ordinary manufacturer, an impossibility, is J. G. McDonald. And as usual with the chocolate maker's art. When McDonald starts out to make a new product he buys samples of the best on the market and then, taking the best of the finest grades, has his factory turn out something still better. This may explain why his milk chocolate is so smooth and tasty.

Peter of Vevey, Switzerland, claims to be the inventor of milk-chocolate and has become world famous on this product. Salt Lake's makers might perform an interesting little experiment. Buy a cake of McDonald's product and one of Peter's, compare their size, weight, color, taste, smoothness and test their nutritious qualities. Salt Lake's who will do this will realize that Salt Lake City is to attain honors as a manufacturing center, which at this early stage of the game defy picturing. Milk-chocolate making is one of the highest triumphs of the chocolate maker's art.

McDonald, like the lexicon of youth, knows no such word as "can't." He had special machinery built in Dresden, Germany, and brought to Salt Lake. With the equipment came experts in milk-chocolate lines from the world's few milk-chocolate wood-chocolate factories.

Then came a long program of experimenting. At last an article worthy of the name of McDonald was turned out and the McDonald name of salesmen went out over the United States to get orders. Tomorrow morning sees the first orders placed with local candy dealers. Day by day the red package with the gold lettering will appear on confectioners' shelves throughout the country. The package will retail for 5 cents and is twice as large as the Peter package, because Peter is handi-

GORDON PLAT



There is Money in Them for You as an Investment

Make Your Money Work For You. Don't Let It Lay Idle

Salt Lake City REAL ESTATE is the safest and best money maker in the world.

If you don't need a home, give your boy a BUILDING LOT, and teach him to save. Make his payments monthly. It's good training.

SALT LAKE CITY—The City of Opportunities—destined to have "200,000" population in 1920.

BEAUTIFUL LIBERTY PARK PAGES GORDON PLAT, AND IT BECOMES YOUR FRONT YARD—SO TO SPEAK. PRICES FROM \$350 UP.

TERMS: \$50 down and \$10 per month, with privilege of paying as much as you wish to pay at any time. No reduction for cash, but, of course, the buyer would save interest. Interest at 7 per cent, but only on unpaid balances.

SEE THESE LOTS AT ONCE

Take Waterloo car and get off at GORDON PLAT. Take this with you to find the lots you want, then call at our office.

TUTTLE BROTHERS CO., Ground Floor, 153 Main St.