

MINING, BUSINESS AND STOCKS

ALTA THE SCENE OF GREAT ACTIVITY

Roads Lined With Teams Hauling Ore From the Centennial-Alta and Other Mines.

MACHINERY AT THE COLUMBUS

Extraction of Second Class Ore in Progress at the Alta-Quincy—Work Going on at the Albion.

Special Correspondence.

Alta, Utah, June 13.—As teams are now able to get through with wagon, Alta is beginning to show an air of activity. The road has been shoveled out to the Centennial-Alta, and a long line of wagons loaded with ore are now plying between Alta and the valley smelters, while each team returning from Randy is loaded with machinery for the Columbus Con. mill. The large Nordberg compressor, and motor, are in place at this plant, and the transformer house is completed. Power from the power plant will be turned on as soon as the transformers arrive, which is expected any day.

Supt. Colburn reports the big strike at the Alta-Quincy to be all that it has been claimed to be, and he is piling up a fine looking second-class milling dump, the red metal predominating in values. He will have his air receiver and pipe on the ground within a few days, when he will commence laying a three-inch pipe line from the air compressor at the Columbus Con., which will furnish power for drills, when he will be able to put the shaft down faster than at present to the large objective vein, and which no doubt will be a hummer, judging from surface showings.

The management of the South Columbus is also making preparations to run a pipe line from the Columbus Con., and will put in power drills when the long bore at that promising property will be forged ahead.

A conspicuous figure in camp during the past week was Wm. Hatfield, who is pushing the long drain tunnel at the Albion, of which he is general manager, and will no doubt have a surprise for the stockholders before the end of the year in the shape of connections with the ore bodies of which so much wealth was produced above, in the old workings.

The Messrs. Oberlander, of the Granite Mining Co., came up a couple of days ago, to check up work done during the winter at that property, where a small force of men is employed.

Quite a number of families have arrived during the past 10 days, and Alta is beginning to assume an air of prosperity, that has not been seen for many years.

FORENOON ON 'CHANGE.

Trading was well distributed but the Sales Were Light.

The trading on the floor of the Mining Exchange this forenoon was well distributed among the various stocks, but in the aggregate it did not amount to much. There were 23,600 shares transferred, for which was paid \$2,877.50. Several of the participants appeared in better form. Sacramento was slightly stronger. Daly-West remained firm. In the bidding, but no stock was brought out, the closing bid being marked up at \$24.10. For Montana-Tonopah, \$2.03 was bid, while the last offer was made at \$2.10. Butler-Liberal was not in as good condition as it was yesterday, closing slightly weaker. Con. Mercus passed the call practically unchanged. The closing quotations and sales were as follows:

TODAY'S QUOTATIONS.

Stocks.	Bid.	Asked.
Alta.....	30	11
Alta-Jack.....	10	
Bullion-Beck.....	1.00	7
Carina.....	4 1/2	25
Con. Mercus.....	24 1/2	25
Daly.....	2 1/2	2 5/8
Daly-Judge.....	3 1/2	
Daly-West.....	23.80	24.10
E. & B. Bell.....	50	1.00
Galeana.....	3	
Grand Central.....	4.60	4.72 1/2
Horn Silver.....	1.95	1.00
Ingot.....	1	
Little Bell.....	75	
Lower Mammoth.....	20	
May Day.....	80 1/2	2 1/2
Mammoth.....	2.03	2.10
Montana-Tonopah.....	7.75	
Ontario.....	3.10	
Petro.....	15 1/2	15 1/4
Sacramento.....	12 1/2	13 1/2
Silver King.....	49.50	50.00
Silver Shield.....	3	
South Swansea.....	3	
Star Con.....	11	11 1/2
Sunshine.....	23	25
Swansea.....	23	25
Utah.....	47 1/2	55
Uncle Sam Con.....	1.08	1.25
U. S. Mining Co.....	19.75	19 1/2
Victor.....	5.35	6.00
Butler-Liberal.....	12 1/2	12 1/2
Roco-Homestead.....	50	
Century.....	71 1/2	72 1/2
Dalton.....	1	
Joe Bowers.....	1	
La Reine.....	6	6 1/4
Little Chief.....	14 1/2	15
Manhattan.....	3.16	4
Martha Washington.....	4 1/2	4 1/2
New York.....	34 1/2	35
Richmond Anaconda.....	14 1/2	
Tetro.....	14 1/2	
Yankee.....	33	34 1/2

REGULAR CALL SALES.

Sacramento, 500 at 15 1/2.
Uncle Sam Con., 3,100 at 13 1/2; 1,000 at 14.
Butler-Liberal, 1,500 at 12 1/2; 500 at 12 1/2; 1,000 at 12 1/2.
Century, 100 at 72 1/2.
La Reine, 1,500 at 6.
Little Chief, 1,000 at 14 1/2.
Martha Washington, 4,000 at 4 1/2.
New York Bonanza, 2,000 at 4 1/2.
Tetro, 100 at 35; 1,000 at 34 1/2; 900 at 34 1/2.
Yankee Con., 500 at 34.

OPEN BOARD SALES.

Con. Mercus, 100 at 24 1/2.
La Reine, 1,500 at 6.
Sacramento, 1,800 at 15 1/2; 1,000 at 15 1/2.

RECAPITULATION.

Shares. Value.
Regular call..... 19,200 \$2,320.50
Open board..... 4,400 556.75
Forenoon's total..... 23,600 \$2,877.25

WORKING OVER TAILINGS.

Plan Being Carried Out by the Anaconda Copper Company.

An Anaconda special to a Butte paper contains the following:
"For some time the Anaconda company has been carrying the tailings, slimes and waste from the abandoned old works to the new smelter and running them through the furnaces. Vast quantities of the old waste heaps are being moved daily. It is said that the enterprise is a profitable one."

"During the early days of the old smelter good ore was so plentiful that the amount of copper which was lost in the tailings was not looked after as it is now. During the latter years it was different. The big heaps of waste remained there until recently."

"It is said that some of the old slimes and tailings assay 6 per cent in copper and sometimes even higher. At the new works this can be treated at a profit."

"The material is made into briquettes and dried. After that it is subjected to a tremendous heat. The process is the same as that used in treating the fine dust from the big furnaces."

"The process of smelting copper ore has advanced until now what is lost is not worth mentioning. The big smokestack is a great advantage. Before the fine dust was installed the smoke carried away copper and arsenic. Now this is all changed and the fine dust is carefully saved and run through the furnaces."

"The smoke that issues from the big stack is thoroughly divested of its arsenic and copper and reaches the upper air thin and white."

STRIKE IN DALY-WEST.

Manager Bamberger Says One Made on 900 Level is Important.

Up to noon today Manager Bamberger had received no authentic information bearing on the report circulated about the strike at the effect that an important strike had been made on the 400 level of that property and within the territory embraced in what was formerly known as the Quincy ground. Mr. Bamberger, while admitting that developments of some consequence were not entirely unexpected in this portion of the mine, he did not believe the shoot had any connection with the recent disclosures on the 900 level. On this level, Mr. Bamberger said, there is no doubt but what an ore body very important had been opened. This find was made at a point about 150 feet from the dividing line between the Daly-West and Quincy, but on the side of the latter. The shoot has been followed for more than 50 feet in one direction. There is no telling yet into what proportions the vein will develop, but the situation looks very inviting indeed at the present time. It is believed to be the same vein which proved prolific at one time in the old Anchor ground.

BOSTON AND TINTIC LEASE.

G. M. Galsford Succeeds in Getting a Renewal Today.

G. M. Galsford of Tintic, who has been working a lease on the Boston & Tintic mine in Tintic for several months, has succeeded in getting a renewal. The papers were executed today.

Uncle Sam Shipments.

The Uncle Sam Consolidated mill will supply the local market with six cars of concentrates this week. Three cars are at the samplers today and three more will arrive tomorrow.

CONCENTRATES.

A carload of ore from the Utah mine at Fish Springs is in today's market.

Manager D. C. Jackling of the Utah Copper company is in Bingham today.

Supt. F. E. Van Housen of the Copper Belt railroad of Bingham, is in the city today.

General Manager William Bayley, Jr., of the Copper Belt railroad, is in Bingham today.

About fifteen tons of concentrates are being produced daily at the Kelp-Kearns mill at Park City.

The June dividend of the Daly-West Mining company, aggregating \$72,000, was distributed today.

President H. G. Catrow, of the Ohio Copper company, has arrived from Ohio to look over local mining interests.

Manager Pope of the Minneapolis Steel & Machinery company is the father of a girl baby, born last Monday.

Peter Cass, superintendent of the California mine at Park City, was down from camp yesterday to attend a case in court.

The ore and bullion settlements reported last yesterday were as follows: Crude ore and concentrates, \$14,700; base bullion, \$48,500.

J. Park Channing, who is the guest of his brother, R. H. Channing, manager of the Utah Consolidated, expects to leave for the east again tomorrow.

R. G. Collins, for several years mechanical superintendent of the Washoe smelters at Anaconda, Mont., has resigned to accept a position with a Chicago firm.

The local officials of the Newhouse mines have been advised that their chief, Samuel Newhouse, has left the city and expected to reach Denver on Saturday next.

John T. Hodson, manager of the Lincoln mine at Pearl, Ida., has returned from a month's trip east, during which he visited the St. Louis fair. He will leave this evening for the mine.

Ellsworth Daggett, the well known mining engineer of this city, recently appointed manager of the Stokes mines in Nevada, has entered upon the duties of that position, succeeding Col. S. T. Pearson.

The latter had charge of the properties for three years.

Aubrey L. Wisker, a mining engineer of St. Louis, representing a syndicate of capitalists in that city, passed through the city yesterday on route to Mountain

City, Nevada. Mr. Aubrey was born in Nevada, not far from the scene of the present activity in the Mountain City district.

Manager Jacobson has been advised that the transformers upon which the starting of the Columbus Consolidated power plant in Little Cottonwood canyon is being awaited, have passed Chicago and are speeding westward over the Rock Island railroad. They will probably reach Salt Lake by the end of the present week.

On the 6th of the management of the American Flag began its promised work of sinking the shaft down another 100 feet. In view of the conditions that were revealed by the sinking of the 1,000-foot level the move has great significance for the property. When the parallel fissures on the 1,000 which revealed such sensational rich bodies of ore were prospected along their strikes some distance, winzes were run upon them to a depth of fifty feet and raises were projected.—Park City Miner.

Ernest A. Enrie, general western manager of the Dearborn Drug & Chemical company, with headquarters in Denver, is in the city greeting his many friends. Mr. Enrie states that he is very pleasantly located in the Colorado capital and both himself and wife are pleased with their new home. Naturally on account of the late troubles in Colorado, times are dull, but everyone anticipates an improvement will come soon, now that the worst is over and conditions are settling down to a proper basis again.

OGDEN & RETURN, \$1.00

Via D. & R. G., Sunday, June 19th.

A grand outing for fishermen and picnic parties. Trout and chicken dinners at the Hermitage. Everybody invited. Special train leaves Salt Lake, 9:30 a. m. Returning special leaves Ogden 9:00 p. m.

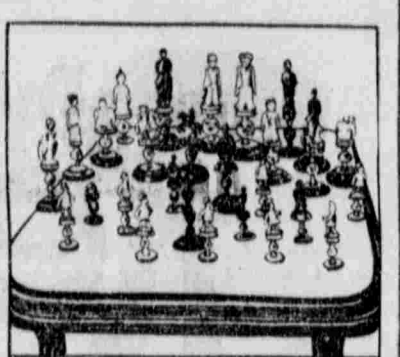
FISHING EXCURSION

To Ogden, Sunday, June 19th.

Special train leaves D. & R. G. depot, 9:30 a. m. Fare to Ogden and return \$1.00. Good facilities for getting up the canyon. Trout dinners at the Hermitage.

FINELY CARVED CHINESE CHESSMEN.

It is not generally known that the game of chess comes from China, in which country it originated thousands of years ago. In the accompanying cut, it is shown a very fine set of Chinese chessmen delicately carved from ivory. All the figures represent Chinese persons.



sons or legends. Though the pieces are only from two to three inches in height, every detail of dress is carried out. The knights are mounted on horses, and the castles are on the backs of elephants in accordance with a myth of the country. In the pedestal of each piece is a hollow globe containing a small ball, which rattles as the piece is moved.

In a billiard room in Paris is a billiard table made of glass. It is no more difficult to make a shot upon it than upon the ordinary baize covered table.

AFTER THE YALU.

It was a summer evening. Old One Lung's work was done. And he before his boy's door. Was sitting in the sun. And by him sported on the sod his little cherubid Hop Sing Tod.

She saw her brother Sney Chop, and something hard and round. Which he beside the Yalu found. In playing there had strayed. He came to ask what he had found. That was so heavy smooth and round.

Old One Lung took it from the boy. Who stood expectant by. And then the old man shook his head. And with a natural air said he: "A Russian breech block," said he; "Was lost in their great victory."

"It was the Russians," One Lung cried. Who put the Yalu to rest. But why they threw it away behind I could not well make out. But Kuropatkin said," quoth he, "That 'twas a Russian victory."

"They say it was a shocking sight After the fight was won. For many thousand Russians there Lay rotting in the sun; But the like that you know, must be After a Russian victory."

"Great praise be to Kuropatkin won. His fame was spread abroad. 'Why, 'twas a very bad death!' He said, 'Hop Sing Tod.' 'Nay, nay, my little girl,' quoth he; 'It was a Russian victory.'"

"And everybody praised the man Who left the Yalu to rest. 'What did the Yalu gain by it?' Quoth Little Sney Chop. 'Why, that I cannot tell,' quoth he, 'But 'twas a Russian victory.'"

—Portland Oregonian.

PUMICE FROM RUSSIA.

The mineral wealth of Russia is hardly appreciated, and new industries are from time to time developed, though the effect of the present war has not in any new scheme. A recent proposition has been made for the development of the pumice stone, which has been found in the provinces of Brivan and Kara, in Transcaucasia. It is near the Kara, at Mahyakutina, are deposits in horizontal strata, and occasionally run over two and a half feet thick, furnishing a high grade mineral that is used for polishing and a porous material that is used for hydraulic cement. The material is conveyed by rail to Port, on the Black Sea, and thence conveyed by steamer to Odessa. When the works are operating their full capacity several million pounds a year of the material will be produced. The world's supply of pumice is now largely derived from the Lipari islands near Sicily.—Harper's Weekly.

WOODMEN EXCURSION

To Ogden Via D. & R. G. R. R., Sunday, June 19th.

Fare \$1 for the round trip. Leave Salt Lake 9:30 a. m. Returning leave Ogden 9 p. m. Trout and chicken dinners at the Hermitage. First class transportation facilities for passengers going up the canyon. Good fishing. Everybody invited. Baseball at Glenwood park. Ogden league team vs Salt Lake Woodmen.

STOCK MARKET BRIGHTENED UP.

Prices Were Higher, While London Materially Helped the Advance.

U. P. AND S. P. VERY ACTIVE.

Large Blocks Changed Hands—Rumors of New Issue of Capital Stock By S. P. Chief Cause.

New York, June 15.—Opening prices in the stock market today showed small gains over last night and the higher prices in London this morning helped the advance. Missouri Pacific led with a gain of 1/2. Otherwise the gains were limited to small fractions. There were some very heavy blocks of Union Pacific and Southern Pacific transferred on the advance.

Heavy operations in a few stocks swayed the course of the general market, but the movement was narrow out, side of the pivotal stocks. Profit taking in Metropolitan Street railway turned the market downwards, but a later rise to 8 1/2 of Union Pacific carried it back to the opening level. Southern Pacific gained 1/2. General Electric sold ex-dividend and ex-rights at 132 to 133 1/2, compared with 131 1/2 last night. The rights brought 58 1/2.

The counters were inclined to be heavy and when the rise in Union Pacific paused, Reading receded 1/4 under last night. Southern Pacific dropped back to a half under last night. U. P. receded 1/2. Prices steadied at or slightly below last night's level. Rumors of a new capital issue by Southern Pacific to fund its floating indebtedness were held accountable for the action in Union Pacific and Southern Pacific. Bonds were irregular.

LIVE STOCK.

CHICAGO.

Chicago, June 15.—Cattle—Receipts, 21,000, steady. Good to prime steers, 5.75@6.25; poor to medium, 4.75@5.25; stockers and feeders, 3.00@4.75; cows, 1.75@4.75; heifers, 2.50@5.25; canners, 1.75@4.75; bulls, 2.50@4.75; calves, 3.00@6.25.

Hogs—Receipts today, 33,000; tomorrow, 23,000; 5c lower. Mixed and butchers, 4.90@5.05; good to choice heavy, 4.50@5.05; rough heavy, 4.35@4.50; light, 4.80@4.95; bulk of sales, 4.90@5.00.

Sheep—Receipts, 15,000; steady; lambs, steady. Good to choice wethers, 4.75@5.25; native lambs, 5.00@6.75.

OMAHA.

South Omaha, June 15.—Cattle—Receipts, 3,400; market steady to 10c lower. Native steers, 4.60@4.90; cows and heifers, 3.50@5.00; canners, 2.75@4.50.

Hogs—Receipts, 12,000; market weak to 5c lower; heavy, 4.80@4.90; mixed, 4.75@4.80; light, 4.65@4.75; pigs, 4.00@4.50; bulk of sales, 4.75@4.80.

Sheep—Receipts, 400; market steady; western yearlings, 5.00@5.50; wethers, 4.00@5.50; ewes, 4.75@5.25; common and stockers, 3.00@5.00; lambs, 5.25@7.00.

KANSAS CITY.

Kansas City, June 15.—Cattle—Receipts, 6,000. Steady to 5c lower. Native steers, 4.90@5.40; native cows and heifers, 2.25@5.40; stockers and feeders, 3.00@4.60; bulls, 2.50@4.25; calves, 2.50@4.50; western cows, 4.50@5.00; western steers, 2.25@5.00.

Hogs—Receipts, 8,000. Weak to 5c lower. Bulk of sales, 4.75@4.90; heavy, 4.50@4.80; packers, 4.75@4.90; pigs and lights, 4.25@4.75.

Sheep—Receipts, 3,000. Steady; muttons, 4.50@5.50; lambs, 5.25@7.00; range wethers, 4.25@5.00; ewes, 3.50@4.75.

ST. LOUIS.

St. Louis, June 15.—Wool steady; territory and western mediums, 16@21; fine medium 16@17; fine, 15@17c.

BOSTON.

Boston, June 14.—The interest in the local wool market is now centered in the new domestic goods which are constantly arriving from the west. The trading in these wools, however, has been slight, partly on account of the ruling firm prices. So far as New England is concerned the new clip is practically cleaned up in Utah, Wyoming, and Idaho, with Oregon and Montana now under way. Pulled and territory wools are quiet. There is little interest in foreign grades. Territory quotations:

Idaho—Fine, 19@18c; heavy fine, 14@15c; fine medium, 17@18c; medium, 18@19c; low medium, 18@19c.

Wyoming—Fine, 15@16c; heavy fine, 14@15c; fine medium, 16@17c; medium, 19@20c; low medium, 20@21c.

Utah and Nevada—Fine, 15@16c; heavy fine, 13@14c; fine medium, 16@17c; medium, 19@20c; low medium, 19@21c.

Dakota—Fine, 15@16c; fine medium, 16@17c; medium, 18@20c.

Montana—Fine choice, 18@19c; fine average, 17@18c; fine medium choice, 18@19c; average, 16@17c; staple, 19@20c; medium choice, 19@20c.

FISHING EXCURSION

To the Provo River.

Via D. & R. G. Leave Salt Lake 5:00 p. m. Saturday and returning leave Upper Falls 9:00 p. m. Sunday night. Over 24 hours in the canyon. Best fishing in this part of the state.

COLORADO-UTAH

WORLD'S FAIR ROUTE
MISSOURI PACIFIC
RAILWAY
ST. LOUIS 1904

SHORT LINE.

TO ST. LOUIS.

Through car Salt Lake City to St. Louis and Kansas City. Only one change to New York, Buffalo and principal points east—low rates for summer travel. Special attention to ladies and children.

Tourist sleepers through to Chicago, Boston and other points, without change.

Inquire at ticket office, 103 Dooley Block, Salt Lake City. Any information cheerfully given.

TWO TRAINS DAILY.

H. C. TOWNSEND, Gen. P. & T. A. Missouri Pacific Ry., St. Louis, Mo.

NOTICE TO FISHERMEN.

The Rio Grande offers a special rate to fishermen of \$2.00 to Forks or Falls in Provo Canyon, good to leave Salt Lake 5:00 p. m. Saturday and returning leave Upper Falls 9:00 p. m. Sunday. Take your family and leave them at Upper Falls; the finest resort in Utah.

WILLIAM H. CHILD

121 Dooley Bldg., Salt Lake. Phone 1042-K.

Utah Industrial, Bank and Mining Stocks.

BOUGHT AND SOLD.

Lagoon TIME TABLE.

In effect May 30, 1904.

Leave Salt Lake	Leave Lagoon
6:30 a. m.	7:30 a. m.
9:00 a. m.	10:00 a. m.
11:00 a. m.	12:00 Noon
1:30 p. m.	2:30 p. m.
3:30 p. m.	4:30 p. m.
5:30 p. m.	6:30 p. m.
7:30 p. m.	8:30 p. m.
9:30 p. m.	10:30 p. m.
11:30 p. m.	

Last train leaves Lagoon Sundays, 8:30 p. m.

Fare for round trip 25 cents.

A. J. PIERSON, Pass. & Ticket Agt.
J. B. BEAN, Excursion Agt.
Office, 301 Main St.

SALT LAKE TIME TABLE