

CITY'S RECEIPTS REACH BIG SUM

THE City's receipts were practically a million dollars greater this year than in 1904. The reason for this is found in the sale of the million-dollar bond issue for the enlargement and betterment of the municipality's water and sewer systems. The figures as given from the treasurer's report are as follows:

RECEIPTS.		1904.	1905.
January	\$ 35,253.09	\$ 87,776.95
February	33,919.94	63,975.97
March	45,894.18	103,970.46
April	60,237.12	33,254.55
May	26,521.71	29,427.92
June	40,425.69	40,591.19
July	50,849.75	570,885.75
August	38,449.83	50,615.41
September	58,840.83	62,961.57
October	72,104.72	321,392.91
November	226,195.65	188,810.31
Totals	\$669,700.49	\$1,553,655.71
Cash on hand Jan. 1, 1905.		122,938.31
Grand total		\$1,676,594.02

DISBURSEMENTS.

1904.	1905.
January
February
March
April
May
June
July
August
September
October
November
Totals
Cash on hand Dec. 1, 1905.
Grand total

Salt Lake Building & Manufacturing Co.

HAT the Salt Lake Building & Manufacturing company is one of the most enterprising concerns of the kind in the west is evidenced by the readiness with which it has responded to the demands to supply material necessary and effective superintendence in the construction of the new Orpheum theater. The company took the contract to build the structure for \$90,000, and the requirements called for completion by the coming Christmas. This was something of an Herculean undertaking; but the Salt Lake Building & Manufacturing company was equal to the emergency, and the result is that the fine theater building will be open to the public as scheduled, on Christmas day, and that the house will be packed, goes without saying.

The contracting company has made a good job of its work, as a glance over the building will show. It is of yellow pressed brick and Sanpete white sandstone in artistic combination, and is equipped in accordance with every principle of safety developed and elaborated up to date, and applied in every detail. In fact the builders have spared no expense in this regard and the arrangements of the interior have been so contrived as to afford extraordinary accommodations for everybody. There are seven exits, so arranged on the Office and State street sides that the merest pressure sufficient to throw them open, although no one can open these doors at will from the outside unless authorized to do so.

The Salt Lake Building & Manufac-

turing company has made a thorough job of this contract. Everything is solid and substantial, and every opportunity was taken advantage of to see that this was done. In fact the designs of the architect have been carried out with a faithfulness to detail and minutiae that shows a conscientiousness in carrying out the spirit of a contract that many other contractors would do well to make note of. There is an air of finish about the Orpheum building that is gratifying to the most exacting taste, and due to the carefulness with which the contracting firm has watched every detail of construction. It has been no easy task to give adequate attention to this, considering the pressure brought to bear to hurry the work of construction; and this has called for the closest attention on the part of the representatives of the contracting firm. Considerable ingenuity has been devised in hurrying the construction, and at the same time doing it satisfactorily, and the fact that the contracting company has been able to meet the expectations of the Orpheum people, and relieve them from all apprehension in the matter of completing the building on schedule time, is certainly a feather in the hat of the Salt Lake Building & Manufacturing company. Its management can point with pride to all parties desirous of letting building contracts, to the thoroughness of its achievement in the building of the Orpheum theater, and the same will undoubtedly be the means of securing for the contracting company a great amount of new business. A great load is lifted from the mind of a man who is putting his money into the erection of a building to know that there is a contracting company that can and will do his work for him with every assurance of completing it at the anticipated time.

THE UTAH LITHOGRAPHING CO.

The Utah Lithographing company of this city is the only lithographing concern between Denver and San Francisco, and in the matter of quality of work and convenience for responding to large orders for the same does not take a back seat for either of the two places named. The fact that the company's extensive business in Utah, Idaho, Wyoming, Montana and Nevada, and the satisfaction given is resulting in increased patronage through all of the above mentioned commonwealths.

The Utah Lithographing company devotes itself exclusively to lithographing in all its branches. This covers banking, stationery-checks, drafts, bonds, stock certificates, letter heads, bill heads and all kinds of commercial stationery; also municipal, county and state stationery, such as bonds, letter heads, warrants, department printing and engraving, legislative work of various kinds, diplomas and degrees, of all kinds for institutions of learning and similar organizations.

The business under the efficient management of Mr. W. T. Edson has more than doubled its output in the past two years. The efficiency of the plant has been increased by new and up-to-date machinery, and they are in position to handle any business entrusted to them, promptly and their work is always strictly high class.

R. G. Dun & Co.

133 Offices.
THE MERCANTILE AGENCY.
George Rust, General Manager, Idaho, Nevada, Utah and Wyoming.
Offices in Progress Building, Salt Lake City, Utah.

McCornick & Co., BANKERS,

SALT LAKE CITY, UTAH.

ESTABLISHED 1873.

[Condition of the Bank at the Close of Business Nov. 9, 1905.

RESOURCES.

Loans	\$3,553,704.08
Furniture and Fixtures	5,000.00
Bonds and Cash Securities	\$ 402,950.00
Cash on Hand and Due from Banks	3,531,936.10
		3,934,885.10
		\$7,493,589.18

LIABILITIES.

Capital	250,000.00
Undivided Profits	138,477.29
Deposits	7,105,111.89
		\$7,493,589.18

Accounts Solicited.

Facilities Unexcelled.

Walker Brothers Bankers.

Established 1859.
Incorporated 1903.

Capital	\$250,000.00
Surplus Fund	50,000.00
Undivided Profits	31,000.00
Deposits	\$2,800,000.00

ABSORBED THE SALT LAKE BRANCH OF WELLS FARGO & CO.'S BANK.

Travelers Letters of Credit Issued,
Available in All Parts of the World

SAFETY DEPOSIT BOXES FOR RENT. \$5.00 Per Year and Upwards.

OFFICERS AND DIRECTORS:

M. H. WALKER, President. THOMAS WEIR, Vice President.
L. H. FARNSWORTH, Cashier.
E. O. HOWARD and JOHN H. WALKER, Assistant Cashiers.
H. G. McXILLAN. W. MONT FERRY.

WE INVITE YOUR ACCOUNT.

Badger Bros. BROKERS.

34 South Main. Phone 1854.
Buy and Sell.
SUGAR STOCKS
MEMBERS MINING EXCHANGE.
Daily Quotation Sheet Delivered on Request.

Edward L. Burton Phones 277

11 EAST FIRST SOUTH ST., SALT LAKE CITY.
BANK STOCK — SUGAR STOCK
And other high grade investment securities
BOUGHT AND SOLD.
CORRESPONDENCE INVITED.



QUEEN OF THE VALLEY ROLLER MILLS.

The Queen of the Valley Roller Mills, owned and operated by James R. Smith & Sons, is situated on the O. S. L. railroad at Eighth South and Third West streets, this city. James R. Smith, Sr., who is general manager has been engaged in the milling business since 1878, having first started business in Sugar House ward, with a small Burr mill, the motive power used being a portion of the waters of Parley's creek. With the development of the milling industry and the introduction of rolls for grinding grain

instead of the old Burr Stones, Mr. Smith kept pace with the improvements, by abandoning the old method and building a four-story brick structure and installing therein a complete roller system having a capacity of 100 barrels of flour per day.

A general milling business was conducted in Sugar House until August, 1903. At that time the business had grown like Mr. Smith's family, to such proportions that he then had six sons who were assisting him in the management and operation of the business; that it was thought judicious to enlarge the

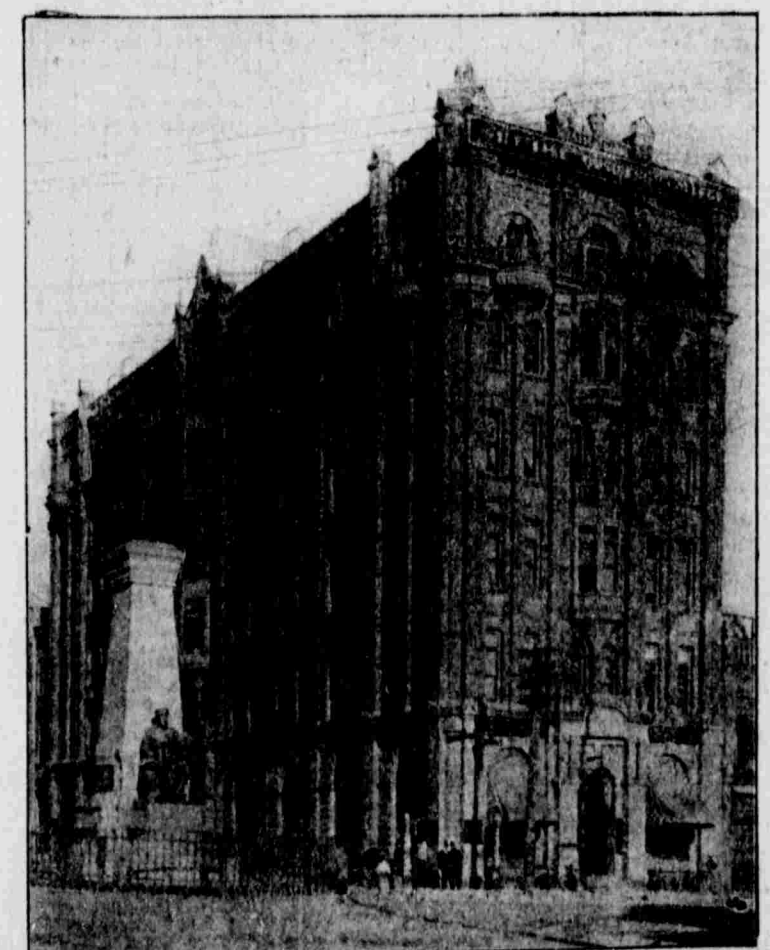
business by increasing the capacity of the mill. As a consequence a site was procured in the city limits, situated as already mentioned and an up to date four-story building erected, length 150 ft., width, 34 ft. Equipped with all the latest improved modern machinery for the manufacture of flour. The machinery includes the most perfect grain cleaners and scourers, and two No. 3 planifiers for grading the flour. The grinding flour has six double stands of 9x24 inch rolls, and power is supplied by a 100 h. p. Corliss engine.

The present capacity of the mill is 200 barrels. A general wholesale feed grain business is also conducted in connection with the mill. Corn, whole and cracked, oats, wheat, barley and rye, being handled extensively. The output of the mill is consumed largely in Salt Lake county. Standard brands of flour being White Dove, High Patent, Smith's Straight Grade, Baker's No. 1. Come and see the process of manufacture of the article from which your bread is made.

THE STATE BANK OF UTAH

Salt Lake City
Established 1890

Capital \$250,000 Deposits \$1,571,000 Undivided Profits \$130,000



ACCOMMODATIONS

WE HAVE every facility for the speedy handling of business. A goodly share of these accommodations are given over to our customers. We shall be pleased to have you communicate with us on the subject of OPENING AN ACCOUNT.

THE STATE BANK OF UTAH

OFFICERS and DIRECTORS: Joseph F. Smith, President. Wm. B. Preston, Vice-President. Chas. S. Burton, Cashier. Henry T. McEwan, Asst. Cashier. Heber J. Grant. Heber M. Wells. A. W. Carlson. James D. Murdoch. Byron Croo. Isaac Barton.