

Blackfoot, the Home of Progress and Opportunity

In one of the most fertile districts of Idaho, in the Snake River valley on the main line of the Oregon Short Line railway and at the point where the Salmon River branch extends westward into central Idaho, is Blackfoot, one of the most thriving cities of eastern Idaho. Blackfoot has been very properly termed the "Grove City" of Idaho, because its residential section is well supplied with tall and stately poplars. Everywhere in Blackfoot the eye is greeted outside the thriving business district of the city proper with attractive homes in large and pleasant gardens.

It is 26 miles north of Pocatello, 158 miles north of Ogden, and 196 miles from Salt Lake City. The population is nearly 3,000, all white people, and practically all Americans.

The towns have excellent graded schools, employing 18 teachers; five churches, 19 lodges and 75 business houses. It has telephones, electric lights, electric power, and water system with excellent water and fire pressure, a volunteer fire department, an armory and company of national guards, a large flouring mill, a state mental hospital, the Southeastern Idaho Fair, a United States land office, a beet sugar factory.

The only way to get an idea of the marvelous development and transformation of this valley under its great reclamation works, is to go and see them. Situated in the great expanse of agricultural lands which are only partly settled and cultivated, many great canals are being constructed for irrigation, tapping the Snake river and carrying the water out upon the vast plains, which constitute the matchless valley of the Snake.

Blackfoot, the county seat of Blaine county, Idaho, is situated in the eastern part of the state, in the Snake river valley. One of the greatest sources of wealth in the state of Idaho is the Snake river, the seventh largest river in the United States, which winds its way through the state for nearly a thousand miles and furnishes water for some of the greatest irrigation projects in the United States, besides its value for power purposes. The large tract of land susceptible of a high state of cultivation, the abundant water supply, the invigorating climate, the excellent quality of fruits and other crops produced, all combine to show that this valley is the land of rare opportunity for investments of either money or labor.

BETTER SUGAR FACTORY.
A beet sugar factory is maintained at Blackfoot and a large acreage of sugar beets under cultivation makes this factory one of the most important in Idaho.

The cultivation of fruits is no longer an experiment, for tracts already planted and well tested for the past 10 years have yielded such regular and valuable returns on the investment that organized effort is being made to produce the best fruit crop possible and to supply the home market in competition with all outside products. Experiments here have shown that land planted to fruit will pay a profit on an investment of from \$200 to \$1,500 an acre, but good land under cultivation may be had at prices ranging from \$50 to \$100 an acre, while unimproved land may be had for much less, and at prices that insure the investment to be profitable.

The market for poultry and dairy products has never been met by home production, and a good field is open for the development of these industries. The tendency in the Blackfoot valley is to cut up the large farms into many smaller ones and raise crops that require careful and skillful farming and which present higher values than those compared with grains and grasses. The establishment of several sugar factories in the valley have met with great success, and inaugurates an industry that is revolutionizing the farming industry and giving greater wealth to the agricultural classes.

Those not familiar with the Snake river valley cannot realize its vast extent nor the large scale on which the irrigation works are now constructed or contemplated. In order to increase the amount of water that may be used through this great river, storage reservoirs are being made of some of the great mountain lakes on its head.

cooler summer nights and more sunshine. The sun shines over 300 days in the year in Southern Idaho. The annual rainfall of the state is 12 inches. There is considerable snowfall for about three or four months of the year. On account of the protection from the Rocky mountains on the east, Idaho is free from cyclones. The thermometer registers as high as 100 degrees above in summer and as low as 20 degrees below zero in winter and yet owing to the dry atmosphere and continual sunshine the sensitive heat and



T. R. JONES,
President of the Blackfoot Commercial
Club and the Idaho Irrigated
Lands Co.

under careful handling and, therefore, is bound steadily to grow and increase in value.

For the hardworking, energetic man of intelligence and common sense the lands of this valley offer a return on his labor and intelligence which will soon put him in an independent position, and it is to this class of men that the Salt River valley particularly appeals.

Mesa, the Gem City

(Continued from page forty-four.)

ceedingly moderate and the valley is now very rapidly settling up, the small farm is becoming the rule, and as the land is farmed in smaller tracts, it naturally produces more intensively.

"SHOPPING DAY AT OUR STORE.

Building on the Right Occupied by the Lesueur-Gibbons Co.



A SUCCESSFUL CONCERN.

One of the largest mercantile establishments in Arizona is located in Mesa, Maricopa county, Arizona. The firm consists of J. T. Lesueur, L. R. Gibbons and James W. Lesueur. The business was established in 1885 as a co-operative store and running as such successfully until May 1st, 1905, when it was sold to the Lesueur-Gibbons company, who came to Mesa to take over the business during that year.

The new company made extensive improvements and their business has grown along with the rapid growth of Mesa and now has a capital of \$200,000 and do a very large business, employing 14 men and women in their various departments, while four salesmen were able to take care of the trade four years ago.

They carry an extensive line of dry goods, trunks, bags, notions, ladies' skirts, suits, coats and waists, children's wear, men's and boys' clothing and furnishings, shoes, carpets, rugs, etc., while in their grocery department a large business is carried on both at wholesale and retail. Many of the staple groceries are handled in car lots, amounting in all to over 150 car loads a year. To the mining towns close by the Lesueur-Gibbons company ship hay and grain. Being on the jobbing list in many lines of groceries and as their representative goes east twice a year, they get their goods at bed rock prices and give their customers the advantage of this right buying.

The firm is noted for its reliability and fair dealing, and has the confidence of the people of Mesa and surrounding country, and new settlers coming to this valley can give them their patronage with full assurance that they will receive courteous and honest treatment.

Mesa Milling Company

MAX VIAULT, Manager

Manufacturers of High Grade Flour, and General Mill Products. Our "Standard" brand is the Best Family Flour on Earth. Dealers in Hay and Grain

MESA, ARIZONA

PAVING IN BLACKFOOT.

cold are not so great as registered by the thermometer. The warm winds from the Japan current in the Pacific ocean which blow up the Columbia and Snake rivers temper the cold of Southern Idaho.

The high altitude, dry and pure atmosphere and abundant sunshine are a wonderful lung tonic. The sweet and sound sleep of the cool summer nights is very refreshing and invigorating.

The society of southern Idaho is excellent, being made up largely from enterprising elements from the middle states. Good schools and churches are built up and maintained as the country settles up. Every 15th and 32nd section is school land. All the leading religious bodies are represented with few exceptions, so that the religiously inclined may always find a place of worship.

The fraternal orders are well represented so that the lodge man may find his own after the business cares of the day are over. All forms of entertainment abound in the west so that no one need be troubled with the spirit of ennui.

Blackfoot is a town of beautiful homes, nice blue grass lawns and fine shade trees. Good churches and schools in Blackfoot. Five churches are in the city, and the schools employ 15 teachers of a high grade.

Blackfoot has an excellent city administration, progressive like the city it represents. The mayor is R. N. West, the clerk is T. J. Johnson and the aldermen consist of Henry Simmons, T. R. Jones, J. G. Bond, H. B. Curtis, M. D. Bowman, Alex. Youngie, S. W. Gibbs and Marcus Blenkins. Chas. F. Willard is chief of police.

The city also has a live Commercial club whose president is T. R. Jones one of the most competent as well as most progressive men in the valley. No one can make a mistake in investigating the unprecedented opportunities of Blackfoot.

SPORTSMAN'S PARADISE

It has diversions to spare as L. Bush Lavermore said:

Away up toward the Caribou country, northeast by north, the Blackfoot river heads. It swings past high hills, through lava cracks, down broad valleys and finally meets to mingle with the Snake near Blackfoot town. One of its sources is Henry's Lake—a sizeable body of water surrounded by a liberal fringe of swampy tule land. It is in your heart to saunter down Henry's lake in the place in the early season of September opening.

THE MESA DAIRY & ICE CO.

One of the most successful and the largest home industries of Mesa is the Mesa Dairy and Ice Co. The entire plant is owned by the ranchers and farmers of the Mesa country, and was started about five years ago. Each rancher subscribed \$100 toward the erection and took stock to that amount, and \$17,000 was raised in this manner. A large up-to-date plant was installed at the cost of \$32,000, the balance was borrowed on the plant to pay for it. The third year the plant paid 8 per cent dividends to its stockholders, and the fourth dividend of 6 per cent was declared. The last year \$5,900 was expended in improvements on the plant, and it is now one of the finest and best equipped establishments in the territory, and is valued at \$40,000. For the past two years the company's butter and cheese have been awarded first prize at the annual territorial fairs. Butter and cheese is shipped to all parts of Arizona and Mexico and they are unable to supply the demands. At the time the plant was started, milk sold as low as 40 cents per hundred pounds, and butter sold at 25c, and now with three times the amount on the market, milk is brought in at \$1.00 to \$1.30 per hundred to the dairymen, and butter is selling at 40c. This speaks for itself, and of the development of the country. The dairying business has greatly increased and has now become one of the most profitable businesses in the country.

The Mesa Dairy and Ice Co., supply all the surrounding country with butter, cheese, ice, and wood and coal, and is one of the most enterprising institutions of the valley. The officers and directors of the concern are, J. G. Spangler, president; W. A. Macdonald, secretary; Fred C. Weekes, manager; Wm. Allison, director. All the officers act as directors.

Openshaw & Johnson.

Dealers in Groceries, Provisions, Fruits, Hay and Grain.

Mesa, Arizona.

Mesa Opera House.

W. A. MacDonald, Manager. Open for booking to first-class companies.

Mesa, Arizona.

H. H. CUSTEAD.

Jeweler. Complete line of watches and jewelry. Fine watch and jewelry repairing.

Mesa, Arizona.

Mesa Bakery Cash Store

PETERSON & PETERSON, Props.

Fresh Bakery Goods.
Fancy and Staple Groceries.
Phone, Main 120.

Mesa, Arizona.

The Crescent Drug Co.

FRANK A. CLUFF, Prop.

Headquarters for Pure Drugs. Prescriptions carefully filled—our specialty.

We carry stationery, books, candies.

"HONEST DRUGS"

Mesa, Arizona.

Dan Hibbert.

Phil Mets.

O. K. STABLE.
Hibbert and Mets, Props.

First-Class rigs and Saddle Horses. Rigs sent to Roosevelt and all parts of territory. Excellent Service. Everything New.

Mesa, Arizona.

SHATTUCK AND NIMMO WAREHOUSE CO.

Mesa, Arizona.

Dealers in staple and fancy groceries, hay, grain and produce.

Wholesale and Retail

THE MESA LIGHT AND POWER CO.

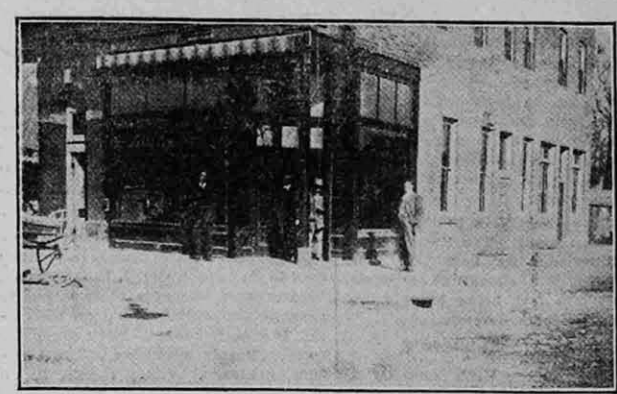
H. L. Chandler, Gen'l Manager. General Heat, Light and Power. Business.

Mesa, Arizona.

Mesa Transfer Co.

Green Patterson, Prop. General Transfer Business. Piano Moving our specialty.

Mesa, Arizona.



FIRST NATIONAL BANK, BLACKFOOT.

can as well be stated of every officer and director connected with the Blackfoot State bank. If business keeps on increasing in the same proportion next year as since organization the bank will soon have increased its office size. A city is usually no stronger than its banks. This being so, judging from the fine record of the State bank, Blackfoot is one of the solidest as well as most prosperous cities in Idaho.

BLACKFOOT FARMERS MILLING CO., LTD.

THE Blackfoot Farmers Milling company, Ltd., successors to the Blackfoot Mill & Elevator company, is one of the largest shippers of grain and produce in eastern Idaho during the Fall of the year, the sales amounting to an average of \$5,000 per month, or 40 to 50 cars of produce. The daily capacity of the mill is 250 barrels; and the flour made is shipped to western Wyoming, Montana and Idaho points. The latest mill equipment combined with the most expert of mill talent that can be procured, makes the plant one of the finest as well as the largest in the state. Ten men are employed and night and day the rollers can be heard. The best brand of flour made by the company is "Free Silver," though the "Majors" and "Daisies" are equally noteworthy in the secondary class. "Purity" is a hard wheat flour made from Turkey Red wheat and has a reputation in a class by itself. In fact, there is scarcely a household in the Upper Snake River valley who does not at times make bread from one of these four well known brands.

The mill is capitalized at \$50,000 with a coterie of officers as well respected and as competent as those of any corporation in the county. James Mackie is president; E. C. Conklin, vice president; D. E. Jones, treasurer; W. H. Danileson, secretary, and A. G. Robert, James Mackie, C. E. Conklin, S. J. Rich, P. D. Van Orden, Carl Anderson and Louis Felt, directors.

The general manager of the mill is

W. H. Wolfgang, who for 20 years has been an active business man in eastern Idaho. He came to Blackfoot from Rexburg and already has established a reputation as a thorough, progressive and competent miller and commercial citizen.

One of the largest features of the industry carried on by the Blackfoot Farmers Milling company is the large shipment of potatoes each autumn. These potatoes, raised in the neighborhood of Blackfoot, are as good as the world over; they are shipped into Oklahoma and Texas in active competition with the famous Gigley product of Colorado and command at times even a better price.

In October and November it is a common sight in Blackfoot to see a score or more wagons in line waiting to have loads of potatoes weighed before placing them on the cars. This mill alone pays out enough each year for this product to make several farmers independent for life.

Altogether the Blackfoot Farmers Milling company, one of the best managed, most thoroughly equipped and most universally popular establishments of its kind in Idaho.

D. H. BIETHAN.

D. H. Biethan has been in business longer than anyone in Blaine county and is one of the old merchants of Idaho, having started in business in 1882. He now makes a specialty of everything ready-to-wear for everybody, having the latest styles and the best makes that can be had. People from all the surrounding country recognize this fact; and ladies equipped with tailored suits, dresses, hats, shoes or anything in the line, or men wanting good clothes, shoes, furnishings, hats and caps, all go to Biethan's at Blackfoot.

Mr. Biethan also carries a big stock of furniture and rugs, and sells at prices that people soon learn are very low. In connection with the line Mr. Biethan does undertaking in all its branches.

T. R. JONES, President P. W. POWERS, Vice-President
JOHN H. EARLY, Sec. and Treas.

The Idaho Irrigated Lands Co., Inc.

BLACKFOOT, IDAHO

Irrigated Fruit and Farm Lands in the Snake River Valley, Idaho

Write us for free descriptive booklet and sales list.

We have bargains in improved and unimproved irrigated lands, also Carey Lands for original entry or by Relinquishment.

References: First National Bank, Blackfoot; Blackfoot State Bank; D. W. Standrod and Co., Bankers; Dun and Bradstreet.

Farm Mortgages Bought and Sold

MESA COLD STORAGE MARKET.

G. E. Martin, Manager.

Beef, Mutton, Pork, Veal, Sausage, Fresh, salted and smoked meats.

Delicatessen, Fish, Oysters, Poultry, Vegetables, Fruit and produce.

Phone, 31. Mesa, Arizona.

R. N. STAPLEY & BRO.

Dealers in

Bicycles and bicycle supplies, Guns and Ammunition, Galvanized Iron. Work of all kinds.

Pipe and pipe fitting. First Class Plumbing.

Mesa, Arizona.

The Pioneer Meat Market.

Dealers in

Diffenderfer and Ruse, Props. All kinds of Fresh Meats. Butter and Eggs.

Mesa, Arizona.

EVERYBODY.

Eats Ice Cream, all the year round at

Everybody's Drug Store.

"Pure Drug Druggists."

Mesa, Arizona.

ELLSWORTH & CO.

Dealers in

General Merchandise, Groceries, Dry Goods, Shoes, Notions, Hay and Grain.

Mesa, Arizona.

The L. W. Blinn Lumber Co.

Dealers in

General Merchandise, Groceries, Dry Goods, Shoes, Notions, Hay and Grain.

Mesa, Arizona.

W. A. Tway, Manager.

Mesa, Arizona.