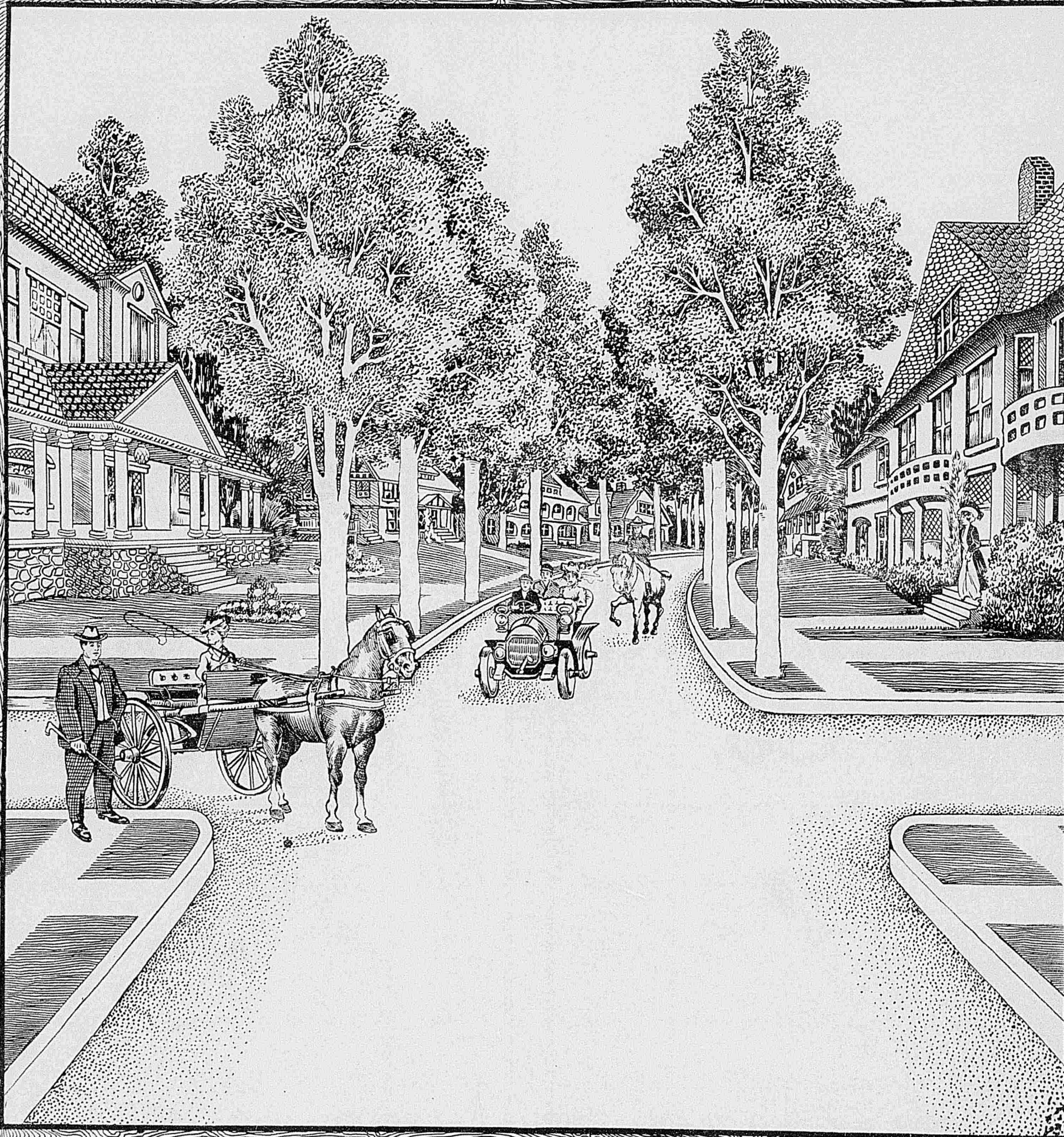


Down Federal Way into

Federal Heights



Salt Lake's Premier Residence Section

THE GRAMERCY PARK OF THE WEST

THE nearest approach to the ideal possible to obtain. Cement sidewalks, curbs and gutters, petrolithic paved streets which are noiseless, mudless and dustless, *twelve inch* water mains, connected with both City Creek and Emigration Canyon water. Sewers throughout property. A view that surpasses any thing in the known world above the smoke and overlooking the city and industries of a commonwealth and yet only ten minutes from the Post Office.

Telluride Realty Company, Owner

A. M. WRENCH, President

Both 'Phones 975

414, 415, 416 McCornick Block, Salt Lake City