

Salt Lake Has Lowest Death Rate Of Any City in the United States.



DR. C. F. WILCOX,
City Physician of Salt Lake.

SALT LAKE, with an estimated population of 75,000 inhabitants, is recognized as one of the most healthful cities of its size in the United States.

It owes this reputation largely to its many natural advantages, and also to its excellent sanitary regulations and the efficiency with which they are carried out. It has an elevation of 4,400 feet above sea level, and is surrounded by mountains which serve to temper the winds as well as to act as mighty reservoirs for an abundant and unfailing supply of water. It is situated on a gentle slope which affords natural facilities for drainage. It has 45 miles of public sewers, and an average daily supply of 15,000,000 gallons of water.

A board of health (of which the mayor is ex-officio chairman) has charge of its sanitary regulations. The city is equipped with a modern and up-to-date quarantine hospital where patients afflicted with smallpox can have every necessary attention. Twelve garbage wagons collect the refuse of the city and convey it to the crematory where it is destroyed by fire. An inspector of provisions has charge of all food supplies and keeps a close watch upon all dairies and slaughter houses. All butcher shops and grocery stores are under his supervision, and it is a very

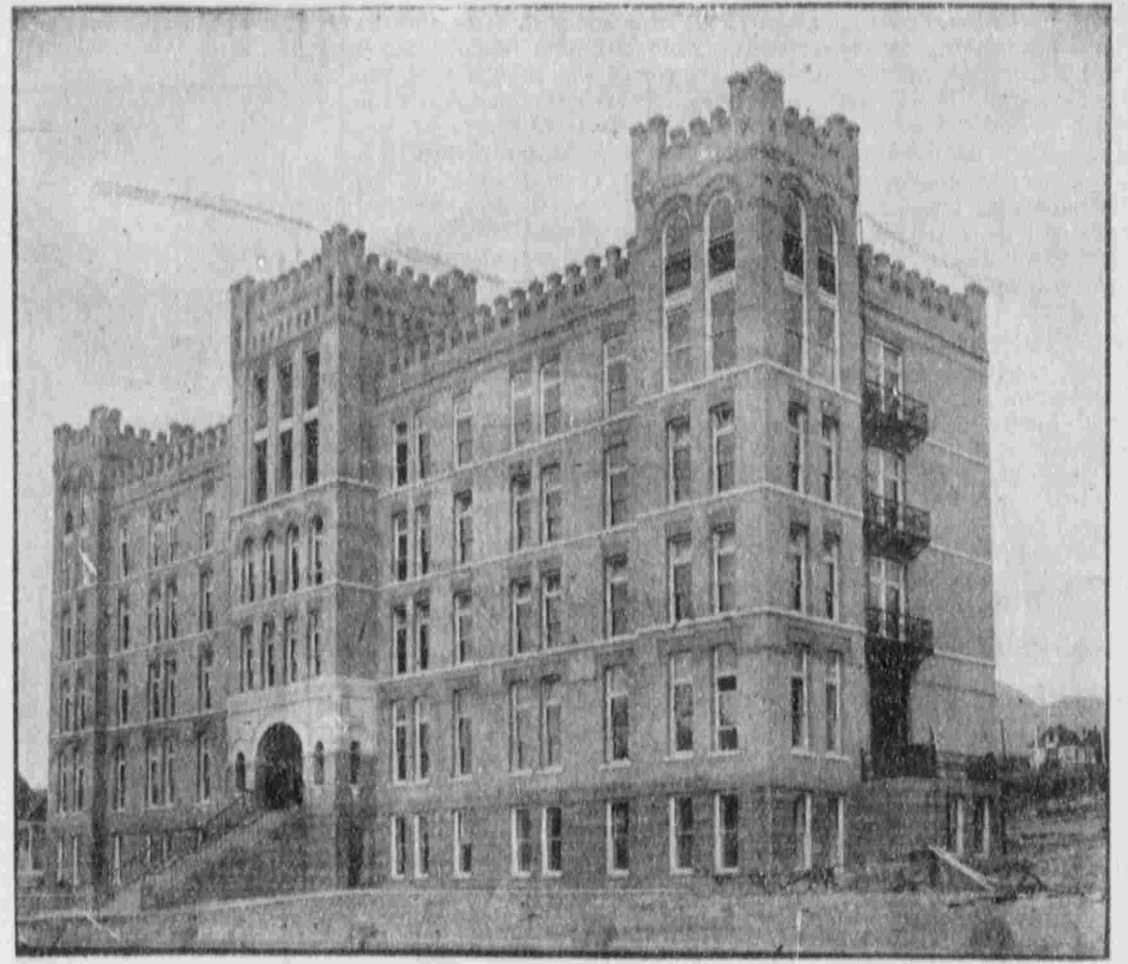
rare thing for any decayed meats or vegetables to escape his watchful eye.

A competent chemist and bacteriologist makes frequent analyses of the milk and water supply and in this way the health of the public is safeguarded.

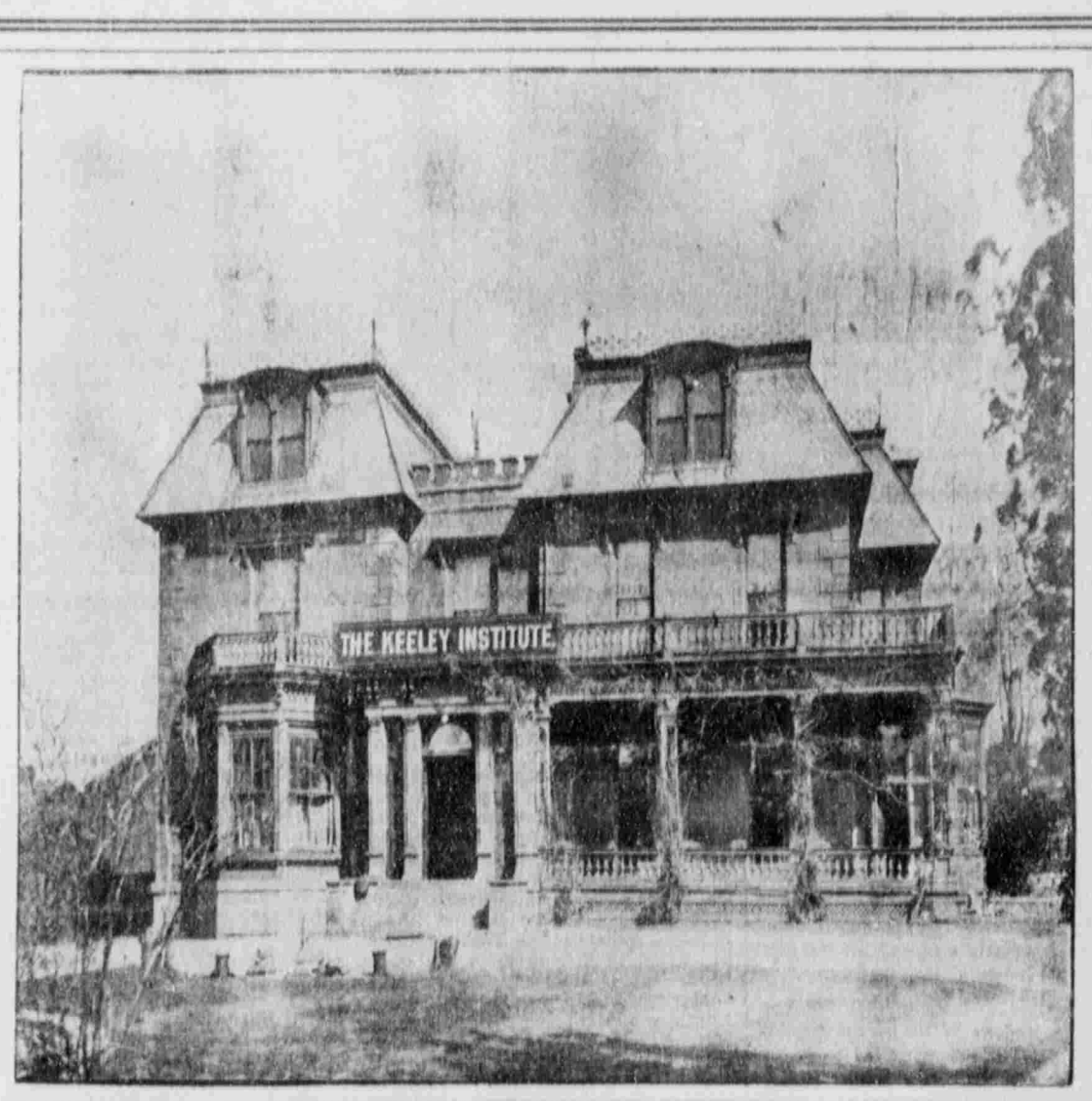
The duty of the health commissioner besides having a general supervision of the entire department is to see that all quarantine regulations are strictly complied with. To quarantine persons afflicted with contagious diseases, and to see that houses are properly disinfected when the period of quarantine is ended. To be on the alert to ward off threatened epidemics, and to abate nuisances of every description.

Our city is rapidly increasing in population and in order that its growth may not be retarded, and also that its present excellent reputation for healthfulness may be continued, it is necessary that proper steps be taken to extend our sewer system and to increase our water supply. Dirt is the enemy of health. Cleanliness is the gospel of health.

If the citizens of this great city will unite in demanding clean homes and clean streets and will provide sufficient water to accomplish it, Salt Lake will be noted not only for being the healthiest but the cleanest city in the United States.



THE NEW LATTER-DAY SAINTS' HOSPITAL.
(P. M. Ulmer & Sons, Architects, 330 Dooly Block.)



THE FAMOUS DEVEREUX HOUSE IS NOW THE KEELEY INSTITUTE.

The announcement is made that the residence of the late Hon. William Jennings, once mayor of Salt Lake City, and one of the financial pillars of Utah 20 years ago—the famous Devereux house, has been leased by the proprietors of the Keeley Institute.

Few homes in Salt Lake have enjoyed a greater fame for hospitality than the Devereux. Originally built by Mr. Jennings, it was during his life time and for some years after the center of a round of social functions whose brilliancy was unsurpassed by any occurring in the west. Gen. Grant, Gen. Sherman, Lady Franklin, and many other notables were entertained there by Mr. and Mrs. Jennings, and years afterward, the social parties that used to be given in its halls and on its lawns were famous for the scale on which they were attempted, and the success with which they were achieved.

There are hundreds of people who need our treatment in order to save themselves from absolute ruin and regain the condition of health and usefulness and respectability lost by indulgence in the excessive use of liquor.

The Keeley treatment for drunkenness has been before the public since 1880. Those who have any knowledge of its results need no assurance of the perfect safety of the system and that its administration is equally safe and effective, whether applied in infancy, youth or old age.

There need be no more sleepless nights for the pale-faced wife. No more long hours of anxious waiting for the steps that never come. No little voice asking, "Why don't papa come?"

DRUNKENNESS IS A DISEASE AND CAN BE CURED.

THE KEELEY INSTITUTE,

All Correspondence Strictly Confidential.

334 W. SOUTH TEMPLE STREET.

SPECIAL ANTHRACITE COAL

All Sizes.
BURTON COAL & LUMBER CO.
60 W. 2nd South.

ADVERTISERS SHOULD USE THE

Semi-Weekly News

If they desire to reach the people of the Western States and Territories in their homes.

Circulation
Books
Open
To
Advertisers.

Don't Be An Old Young Woman.

No matter how gray, streaked or badly bleached your hair may be

Imperial Hair Regenerator will restore it to any natural uniform color. Absolutely harmless. Endorsed by Medical and Theatrical Professions. Detection impossible. Permits curling or shampooing. Acknowledged both here and abroad. Standard Hair Coloring for Gray or Bleached Hair. One application lasts months. Sample of your hair colored free. Privacy assured. Sole manufacturers and patentees.

Imperial Chemical Mfg. Co., 135 W. 23rd St., N.Y.



The Only Double-Track Railway between the Missouri River and Chicago.

The Overland Limited

The Most Luxurious Train in the World

Compartment and drawing-room sleeping cars, observation cars, dining cars, buffet-smoking and library cars, with barber, bath and book-lovers library; entire train electric lighted, through to Chicago without change. Direct connection for St. Paul and Minneapolis.

Tickets, reservations, and full information can be obtained from C. A. Walker, General Agent.

Chicago & North-Western Ry.

38 West Second South St., Atlas Bldg., corner Salt Lake City, Utah.

St. Paul and Minneapolis

Chicago & North-Western Ry.

38 West Second South St., Atlas Bldg., corner Salt Lake City, Utah.

St. Paul and Minneapolis

Chicago & North-Western Ry.

38 West Second South St., Atlas Bldg., corner Salt Lake City, Utah.

St. Paul and Minneapolis

Chicago & North-Western Ry.

38 West Second South St., Atlas Bldg., corner Salt Lake City, Utah.

St. Paul and Minneapolis

Chicago & North-Western Ry.

38 West Second South St., Atlas Bldg., corner Salt Lake City, Utah.

St. Paul and Minneapolis

Chicago & North-Western Ry.

38 West Second South St., Atlas Bldg., corner Salt Lake City, Utah.

St. Paul and Minneapolis

Chicago & North-Western Ry.

38 West Second South St., Atlas Bldg., corner Salt Lake City, Utah.

St. Paul and Minneapolis

Chicago & North-Western Ry.

38 West Second South St., Atlas Bldg., corner Salt Lake City, Utah.

St. Paul and Minneapolis

Chicago & North-Western Ry.

38 West Second South St., Atlas Bldg., corner Salt Lake City, Utah.

St. Paul and Minneapolis

Chicago & North-Western Ry.

38 West Second South St., Atlas Bldg., corner Salt Lake City, Utah.

St. Paul and Minneapolis

Chicago & North-Western Ry.

38 West Second South St., Atlas Bldg., corner Salt Lake City, Utah.

St. Paul and Minneapolis

Chicago & North-Western Ry.

38 West Second South St., Atlas Bldg., corner Salt Lake City, Utah.

St. Paul and Minneapolis

Chicago & North-Western Ry.

38 West Second South St., Atlas Bldg., corner Salt Lake City, Utah.

St. Paul and Minneapolis

Chicago & North-Western Ry.

38 West Second South St., Atlas Bldg., corner Salt Lake City, Utah.

St. Paul and Minneapolis

Chicago & North-Western Ry.

38 West Second South St., Atlas Bldg., corner Salt Lake City, Utah.

St. Paul and Minneapolis

Chicago & North-Western Ry.

38 West Second South St., Atlas Bldg., corner Salt Lake City, Utah.

St. Paul and Minneapolis

Chicago & North-Western Ry.

38 West Second South St., Atlas Bldg., corner Salt Lake City, Utah.

St. Paul and Minneapolis

Chicago & North-Western Ry.

38 West Second South St., Atlas Bldg., corner Salt Lake City, Utah.

St. Paul and Minneapolis

Chicago & North-Western Ry.

38 West Second South St., Atlas Bldg., corner Salt Lake City, Utah.

St. Paul and Minneapolis

Chicago & North-Western Ry.

38 West Second South St., Atlas Bldg., corner Salt Lake City, Utah.

St. Paul and Minneapolis

Chicago & North-Western Ry.

38 West Second South St., Atlas Bldg., corner Salt Lake City, Utah.

St. Paul and Minneapolis

Chicago & North-Western Ry.

38 West Second South St., Atlas Bldg., corner Salt Lake City, Utah.

St. Paul and Minneapolis

Chicago & North-Western Ry.

38 West Second South St., Atlas Bldg., corner Salt Lake City, Utah.

St. Paul and Minneapolis

Chicago & North-Western Ry.

38 West Second South St., Atlas Bldg., corner Salt Lake City, Utah.

St. Paul and Minneapolis

Chicago & North-Western Ry.

38 West Second South St., Atlas Bldg., corner Salt Lake City, Utah.

St. Paul and Minneapolis

Chicago & North-Western Ry.

38 West Second South St., Atlas Bldg., corner Salt Lake City, Utah.

St. Paul and Minneapolis

Chicago & North-Western Ry.

38 West Second South St., Atlas Bldg., corner Salt Lake City, Utah.

St. Paul and Minneapolis

Chicago & North-Western Ry.

38 West Second South St., Atlas Bldg., corner Salt Lake City, Utah.

St. Paul and Minneapolis

Chicago & North-Western Ry.

38 West Second South St., Atlas Bldg., corner Salt Lake City, Utah.

St. Paul and Minneapolis

Chicago & North-Western Ry.

38 West Second South St., Atlas Bldg., corner Salt Lake City, Utah.

St. Paul and Minneapolis

Chicago & North-Western Ry.

38 West Second South St., Atlas Bldg., corner Salt Lake City, Utah.

St. Paul and Minneapolis

Chicago & North-Western Ry.

38 West Second South St., Atlas Bldg., corner Salt Lake City, Utah.

St. Paul and Minneapolis

Chicago & North-Western Ry.

38 West Second South St., Atlas Bldg., corner Salt Lake City, Utah.

St. Paul and Minneapolis

Chicago & North-Western Ry.

38 West Second South St., Atlas Bldg., corner Salt Lake City, Utah.

St. Paul and Minneapolis

Chicago & North-Western Ry.

38 West Second South St., Atlas Bldg., corner Salt Lake City, Utah.

St. Paul and Minneapolis

Chicago & North-Western Ry.

38 West Second South St., Atlas Bldg., corner Salt Lake City, Utah.

St. Paul and Minneapolis

Chicago & North-Western Ry.

38 West Second South St., Atlas Bldg., corner Salt Lake City, Utah.

St. Paul and Minneapolis

Chicago & North-Western Ry.

38 West Second South St., Atlas Bldg., corner Salt Lake City, Utah.

St. Paul and Minneapolis

Chicago & North-Western Ry.

38 West Second South St., Atlas Bldg., corner Salt Lake City, Utah.

St. Paul and Minneapolis

Chicago & North-Western Ry.

38 West Second South St., Atlas Bldg., corner Salt Lake City, Utah.

St. Paul and Minneapolis

Chicago & North-Western Ry.

38 West Second South St., Atlas Bldg., corner Salt Lake City, Utah.

St. Paul and Minneapolis

Chicago & North-Western Ry.

38 West Second South St., Atlas Bldg., corner Salt Lake City, Utah.

St. Paul and Minneapolis

Chicago & North-Western Ry.

38 West Second South St., Atlas Bldg., corner Salt Lake City, Utah.

St. Paul and Minneapolis

Chicago & North-Western Ry.

38 West Second South St., Atlas Bldg., corner Salt Lake City, Utah.

St. Paul and Minneapolis

Chicago & North-Western Ry.

38 West Second South St., Atlas Bldg., corner Salt Lake City, Utah.

St. Paul and Minneapolis

Chicago & North-Western Ry.

38 West Second South St., Atlas Bldg., corner Salt Lake City, Utah.

St. Paul and Minneapolis

Chicago & North-Western Ry.

38 West Second South St., Atlas Bldg., corner Salt Lake City, Utah.

St. Paul and Minneapolis

Chicago & North-Western Ry.

38 West Second South St., Atlas Bldg., corner Salt Lake City, Utah.

St. Paul and Minneapolis

Chicago & North-Western Ry.

38 West Second South St., Atlas Bldg., corner Salt Lake City, Utah.

St. Paul and Minneapolis

Chicago & North-Western Ry.

38 West Second South St., Atlas Bldg., corner Salt Lake City, Utah.

St. Paul and Minneapolis

Chicago & North-Western Ry.

38 West Second South St., Atlas Bldg., corner Salt Lake City, Utah.

St. Paul and Minneapolis

Chicago & North-Western Ry.

38 West Second South St., Atlas Bldg., corner Salt Lake City, Utah.

St. Paul and Minneapolis

Chicago & North-Western Ry.

38 West Second South St., Atlas Bldg., corner Salt Lake City, Utah.

St. Paul and Minneapolis

Chicago & North-Western Ry.

38 West Second South St., Atlas Bldg., corner Salt Lake City, Utah.

St. Paul and Minneapolis

Chicago & North-Western Ry.

38 West Second South St., Atlas Bldg., corner Salt Lake City, Utah.

St. Paul and Minneapolis

Chicago & North-Western Ry.

38 West Second South St., Atlas Bldg., corner Salt Lake City, Utah.

St. Paul and Minneapolis

Chicago & North-Western Ry.

38 West Second South St., Atlas Bldg., corner Salt Lake City, Utah.

St. Paul and Minneapolis

Chicago & North-Western Ry.

38 West Second South St., Atlas Bldg., corner Salt Lake City, Utah.

St. Paul and Minneapolis

Chicago & North-Western Ry.

38 West Second South St., Atlas Bldg., corner Salt Lake City, Utah.

St. Paul and Minneapolis

Chicago & North-Western Ry.

38 West Second South St., Atlas Bldg., corner Salt Lake City, Utah.

St. Paul and Minneapolis

Chicago & North-Western Ry.

38 West Second South St., Atlas Bldg., corner Salt Lake City, Utah.

St. Paul and Minneapolis

Chicago & North-Western Ry.

38 West Second South St., Atlas Bldg., corner Salt Lake City, Utah.

St. Paul and Minneapolis

Chicago & North-Western Ry.

38 West Second South St., Atlas Bldg., corner Salt Lake City, Utah.

St. Paul and Minneapolis

Chicago & North-Western Ry.

38 West Second South St., Atlas Bldg., corner Salt Lake City, Utah.

St. Paul and Minneapolis

Chicago & North-Western Ry.

38 West Second South St., Atlas Bldg., corner Salt Lake City, Utah.

St. Paul and Minneapolis

Chicago & North-Western Ry.