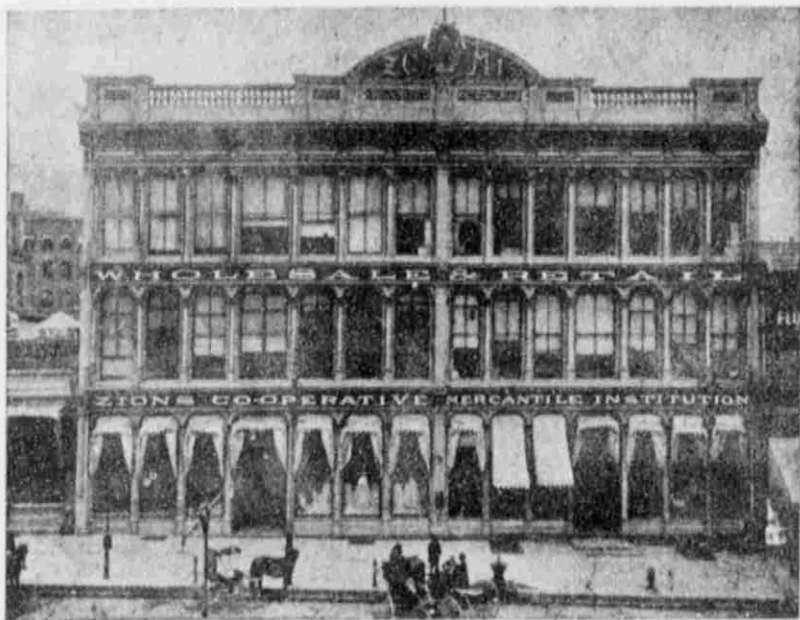


Z. C. M. I.

Manufacturers, Importers, Wholesale and Retail Dealers in General Merchandise.

SALT LAKE CITY, OGDEN AND PROVO, UTAH, AND IDAHO FALLS, IDAHO.



MAIN BUILDING, SALT LAKE CITY.

Organized 1868.

Capital and Surplus, - - \$1,377,000.00

Annual Sales, - - - \$4,000,000.00

Our trade extends throughout the State of Utah,
and into Nevada, Idaho, Wyoming,
Colorado and Arizona.



SHOE AND CLOTHING FACTORY, SALT LAKE CITY.

We point with pride to the 22 Gold and Silver Medals our factories have won at the State Fairs. Our Shoes, Overalls and Duck Clothing are not excelled for quality and durability. Our factories give employment to 150 hands, and we suggest to the people of Utah that the best and only way to build up our beautiful State is to

PATRONIZE HOME INDUSTRY.

LORENZO SNOW, President.

GEO. Q. CANNON, Vice-President.

T. G. WEBBER, Secretary & General Superintendent.

A. W. CARLSON, Treasurer.

UTAH SUGAR COMPANY.

GEORGE Q. CANNON, President.

THOMAS R. CUTLER, Vice-President and Manager.

HORACE G. WHITNEY, Secretary and Treasurer.

BOARD OF DIRECTORS:

GEORGE Q. CANNON,

WM. B. PRESTON,

BARLOW FERGUSON,

THOMAS R. CUTLER,

JAMES JACK,

GEORGE H. TAYLOR,

HEBER J. GRANT,

W. S. McCORNICK,

JOHN R. WINDER,

JOSEPH F. SMITH,

THOMAS G. WEBBER,

WM. H. McINTYRE,

JOHN HENRY SMITH

FACTORY AT LEHI, - UTAH.

AUXILIARY PLANTS AT SPRINGVILLE AND BINGHAM JUNCTION, UTAH.

Manager and Broker's Office.

No. 20-6 Main Street, Salt Lake City.

Secretary and Treasurer's Office.

Deseret News Building, Salt Lake City, Utah.