

# Enterprises and Activities of Ogden, Weber County

OGDEN—sometimes called the Junction City—is the second city in Utah in population and business, and in the first rank as a railroad center, and is destined to become one of the most important cities in the west. It has a population of nearly 25,000, and has been growing very fast during the past few years. It is estimated that Ogden's population has increased fully 10 per cent during 1905, and the prospects are that the next 12 months will witness an even greater increase. A majority of those who have moved to Ogden during the past few years have come here for the purpose of making it their permanent home. They have bought land and built cozy homes, which is the best indication that they intend making this their permanent abiding place.

There is no city anywhere in the west more beautifully located. To the east of the city is the Wasatch range, towering thousands of feet, faced with rugged cliffs. These mountains are snow-capped each year until late in June, furnishing a most picturesque appearance, and providing water for the streams that water the beautiful valley. This range of mountains continues in a crescent shape around the city to the east, north and south, while only a few miles to the west of the city is the Great Salt Lake. Through the valley runs two beautiful streams of clear, pure water—the Weber and Ogden rivers—used for irrigation and domestic purposes.

Founded in 1850.

Ogden City was laid out in August, 1850, a little over 55 years ago, and was incorporated the following January, when Hon. Lorin Farr was elected its first mayor, and he has ever since made Ogden his home.

Good Business Year.

The city has some of the largest wholesale and retail business concerns in the state. Industries of various kinds have located here, and have prospered. The business men of the city, generally speaking, are in a better financial condition than for years. The credit business of the merchants has been materially decreased, the public having apparently plenty of money with which to pay for goods when purchased, putting business on a better cash basis, enabling the business men to buy goods at better prices, and to sell at a reduction, thus stimulating trade and helping the consumer. Several new business houses have opened up in Ogden during this year, and are doing well. No business failures have been recorded.

Real Estate Held High.

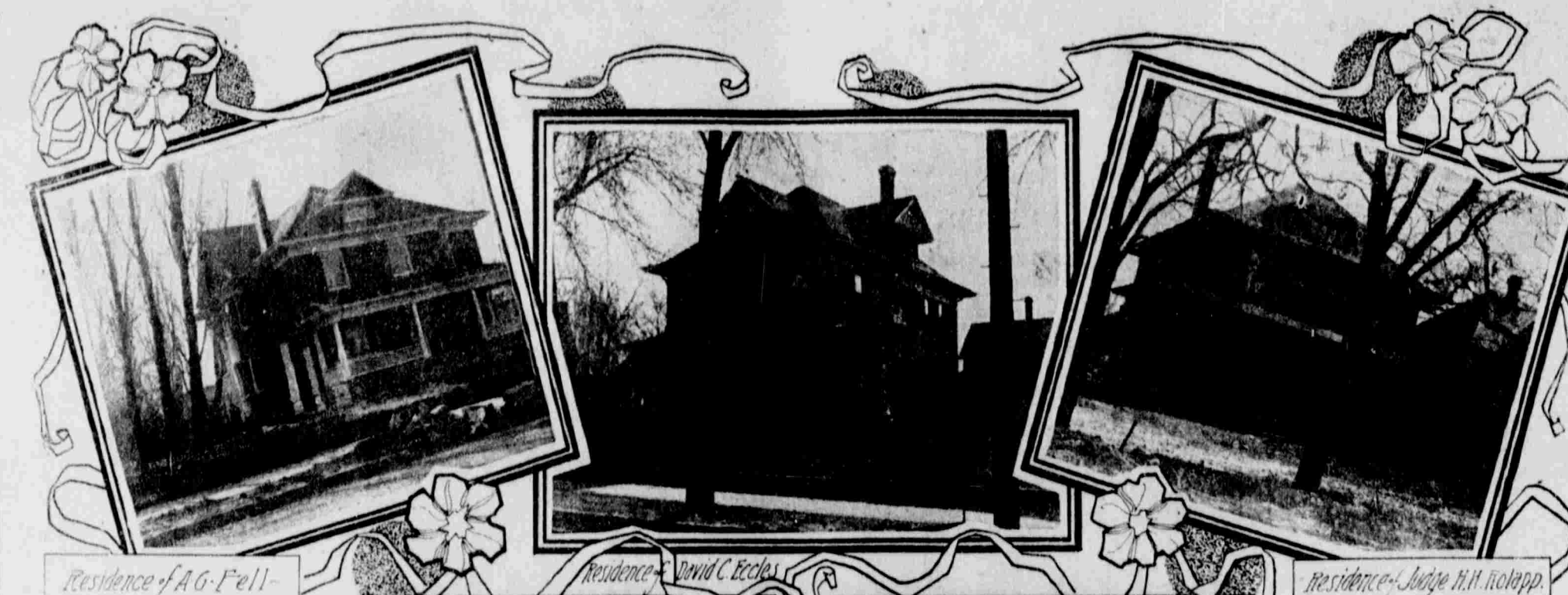
The sale of real estate in Ogden during 1905 has not been unusually large, though a great deal of real property has changed hands, and good prices have been paid in most instances. In the business section fewer changes have been made, though there has been some business property sold and several large, modern blocks erected. The number of substantial cottage homes erected this year has been very large. There are few streets in the city where from one to a half dozen pretty residences have not been built. Most of the cottages built have been for the occupancy of the owners and their families. What has also been gratifying to observe throughout the year is that while these many homes have been built costing in the aggregate \$300,000, the rentable houses are well occupied. There are few houses in Ogden vacant even in the outer districts of the city, and houses for rent are bringing good money. The real estate men say that they have been unable this year to supply the demand for modern houses, and that if a hundred modern cottages were built in the various parts of the city they could be easily rented at good rates.

Quite Metropolitan.

Ogden has taken on more of a metropolitan air the past few years. Several of the most important business streets of the city have been paved, and many more macadamized. There are now several miles of streets with stone or cement curb and gutter in the city, and most of the street are well graded. The appearance of the city has been greatly enhanced by these improvements. Other extensive improvements along these same lines have been planned for next year.

As a Railroad Center.

Ogden City is one of the greatest railroad centers in the western country. At this point converge the main arteries of the Harriman and Gould systems. Until some months ago the Union Pacific, Oregon Short Line, Southern Pacific and the Rio Grande Western all en-



tered the union depot. While there have been no actual changes in the physical status of the railroads the fact that the operating jurisdiction of the Oregon Short Line has been extended to take in the first and third named lines, but two railroad systems now enter this city. As it is, with the exception of the Salt Lake Route at Salt Lake, every passenger going west over the mid-continent route passes through Ogden and in consequence the \$190,000 union depot there almost at any hour during the 24 presents a scene of great animation.

New Yards Being Built.

Owing to the big volume of business handled at this the most important junction of Utah, it has become imperative that there be a number of improvements inaugurated. Prominent among these which have been already commenced is the re-construction of the railroad yards whereby the Oregon Short Line and the Rio Grande Western can more easily handle its growing traffic. Among the changes which will be most appreciated by the traveling public will be the erection of a series of "umbrella sheds," that will cover each platform thereby permitting passengers to walk to their cars in the most inclement weather without being wet through by rain or snow or being scorched by the rays of the sun in summer time. This improvement alone will cost the company in the neighborhood of \$25,000.

Aside from the tourist feature other improvements have been instituted and are under way which help to make Ogden a great railroad center. The Harriman interests during the past few months have erected big machine shops and locomotive works which are still further to be enlarged in the near future. These already give employment to a small army of skilled laborers.

The Gould interests in the form of the Rio Grande Western have a separate freight house and repair shops where a goodly sized force of men are given steady employment.

Means Large Payroll.

Taken all in all it is estimated that the railroad departments located at Ogden give employment to 2,500 breadwinners with an annual salary list aggregating some \$3,000,000, practically all of which is placed in circulation in that city.

At the present time there are 42 passenger trains running in and out of Ogden daily. Of this number a fair percentage stop over and view the city taking side trips to the famous Ogden canyon and other points of interest. There visitors annually leave thousands of dollars in this city.

While at the present time Ogden is in a prosperous condition there are still better things in store for her. The Oregon Short Line is making an important improvement between Ogden and Roy, Weber county, on the line to Salt Lake, by the building of a cut-off leading from Thirtieth street in a southwesterly direction towards Roy where it connects with the main line, thus not only saving a short distance, but bringing the trains direct into the union depot, instead of being there as is now the case by backing all trains into the yards. When this work is completed, and it is estimated that it will be done by January 1, a readjustment of



Residence of Charles H. Smith



Residence of Herbert R. Mac Millan

## A FEW OF THE MANY FINE HOMES ERECTED IN OGDEN IN 1905.

the entire trackage of the present yards will follow.

Commissary Building.

Other extensive railroad improvements are under consideration for Ogden, among these now being actually constructed are a large commissary building and an enlargement of the existing shops.

In addition the Rio Grande Western is now taking initial steps in the erection of a new freight depot on Washington avenue and a portion of the double trackage to this site has been already laid. The same company is also to erect a machine and repair shop at this point while the Harriman companies are also figuring on erecting a big freight depot and the Pineshaw company is making arrangements to enlarge its plant.

The Salt Lake & Ogden Railway company is also to extend from Layton to Ogden during the coming year, affording a new line between Ogden and Salt Lake.

Progressive Schools.

Few cities in the United States can boast of better public schools, and private institutions of learning than Ogden City and Weber county. Within the city limits are situated in good lo-

cations, 19 excellent school buildings which with the property and school furniture, etc., is valued at about \$310,000. Three of the larger school buildings the Central and Five Points and High school, have been remodelled and enlarged and sanitary plants have been installed at the Quincy and Central schools.

The kindergarten department has been established in the Ogden schools and is giving excellent results. The Ogden schools were awarded the highest honors at the Lewis and Clark exposition this year in elementary work and the exhibit of the Ogden High school commercial department was awarded a gold medal. The enrollment in the public schools is yearly increasing. This year there are over 400 students in attendance at the High school. Another new departure will be instituted the early part of January, a night school, giving opportunity to young men and ladies to attend that school who are employed in the day time. There are at present employed instructing the 4500 children enrolled in the public schools, 121 teachers, an increase of 15 over last year. The average daily attendance at the schools is over 4,000. It will cost for running the Ogden city schools this year about \$125,000.

Ogden city has 17 church edifices within the city limits, eight of which are owned by the Latter-day Saints, one by the Catholic church, one by the Presbyterians, two by the Methodists, one by the Congregationalists, one by the Baptists, one by the Episcopalians, one by the Christian Scientists and one by the Josephites. The churches throughout the city are usually well attended and the buildings and grounds are well kept up.

The County Schools.

The public schools of Weber county, outside of Ogden city have attained a very high standard. In July of this year the county commissioners consolidated all the schools of the county, and appointed the following board of education: P. W. Stratford, president; J. B. Carver, vice president; Anton Christensen, Lester H. Erner and B. F. Blaylock, who have carefully guarded the county school interests with the able assistance of County Superintendent of Schools Wm. H. Peterson. The clerk of the board is Samuel Dye. There are enrolled in the county schools 3,270 pupils, who are taught by 59 teachers. Weber county's school properties including real estate, improvements and furnishings are valued at \$100,911. It costs about \$5 per capita for education.

ing the children. The consolidation is working wonders in Weber county.

State Institutions.

Two of the state institutions are located in Ogden, the State School for the Deaf and Blind, and the State Industrial school. Both institutions have large and commodious buildings, with beautifully improved grounds, also excellent orchards on which are raised some of the finest fruits in the state.

At the Deaf and Blind school this year a fine residence for Superintendent F. M. Driggs has been erected, and the other buildings considerably improved. This school draws patronage from Utah, Idaho, Wyoming and Nevada, and has this year an attendance of 125 pupils in the deaf and blind departments. These pupils are taught to read and write, and the dumb are made to speak through the wonderful methods used by Prof. Driggs and his able corps of instructors. The students are also taught various trades, at which some of the pupils are very apt. The work displayed this year from the manual training and domestic arts departments at the Lewis and Clark exposition at Portland, was praised highly by all who saw it and the live exhibit was an amazement to thousands. The school receiving several medals and other honors.

The State Industrial school has been doing a most excellent work among the incorrigibles, and many wayward boys and girls have been saved from a downward path and are today honorable men and women through the excellent teachings and work done at the school. A certain number of hours every day are devoted to scholastic work, and a portion of their time is given over to learning trades. They also have military drills.

Superintendent Allison and his worthy wife who for so many years have been at the head of the institution resigned this year and their places were filled by H. H. Thomas and wife.

Federal Building.

The \$200,000 federal building for Ogden was commenced this year on the site given the government, corner of Grant avenue and Twenty-fourth street. The present condition of the building is shown by the illustration, only the first story of the structure has been completed up to the present time, but a large corps of men has been employed for several months past getting the building up to where it is now. When completed it will be one of the most beautiful buildings in the city. It is all of cut gray sandstone and modern in every respect, and will be absolutely fire proof. When completed it will be two stories with basement. It is not expected that it will be fully finished before another year. When done the postoffice will move into it, occupying the greater part of the first floor, which will make a beautiful home for the postal department. Other federal offices will be removed to the building so that all the government offices will be in the one place.

The erection of this building on the site indicated has greatly enhanced the value of real estate in that vicinity, the owners having advanced the prices on the same fully 25 per cent. The government building will be a big advantage to that portion of the city, and it is expected that a number of large business blocks will be built in that section during the next few years. There are located in Weber county 19

canning factories, which can annually several hundred thousand cases of fruit and vegetables. This is another industry that has been a great benefit to this and other counties. The products of these factories as well as the factories of Davis and Boxelder counties are controlled by one large corporation known as the Utah Canning & Storage company, whose offices are in Ogden City. This company handles the entire output of the 15 factories in the three counties, placing the goods on the market and securing therefore good prices.

There are also a number of large flour mills, creameries, evaporating plant, brick and tile factories, knitting factories, harness and saddle factories, iron foundries, cracker factory, and numerous other extensive manufactures and industries located in Ogden City, all tending to advance the city, not alone in wealth, but also in population, providing a great amount of work for both men and women at good wages.

It is these industries connected with the many excellent farms, orchards and vineyards, etc., that makes Ogden the progressive, beautiful place it is.

Wealth of Weber County.

Weber county is the second wealthiest county in the State of Utah. It lacks only a few hundred thousand dollars in valuation to place it in the ranks of a second class county, which requires an assessed valuation of \$10,000,000. Weber county, including Ogden City, had for 1905 an assessed valuation of \$14,237,723, an increase of nearly half a million dollars over the previous year. The assessed valuation of Ogden City is as follows:

Real estate ..... \$3,707,532  
Improvements ..... 2,944,320  
Personal property of all kinds 2,278,965

Total ..... \$8,930,817

The valuation of Weber county outside of Ogden City is as follows:

Real estate ..... \$1,761,407  
Improvements ..... 446,023  
Personal property ..... 882,161

Total ..... \$3,089,591

The valuation of livestock, etc., in the entire city and county is as follows:

Horses and mules, 5028 head ..... \$122,506  
Cattle, 10,784 head ..... 175,835  
Sheep, 23,882 head ..... 45,624  
Swine, 1,334 head ..... 6,881  
Bees, 839 stands ..... 1,874  
Merchandise and fixtures ..... 1,062,025  
Machinery and tools ..... 230,639  
Solvent credits ..... 98,013  
State board of equalization assessment on car companies, etc. .... 1,885,881  
The assessment this year for all purposes was 33 mills.

A MEMORIAL TO GLADSTONE.

The cut shows the model of the memorial to Gladstone which has recently been placed in front of the church of St. Clement Dances, in the Strand, London.



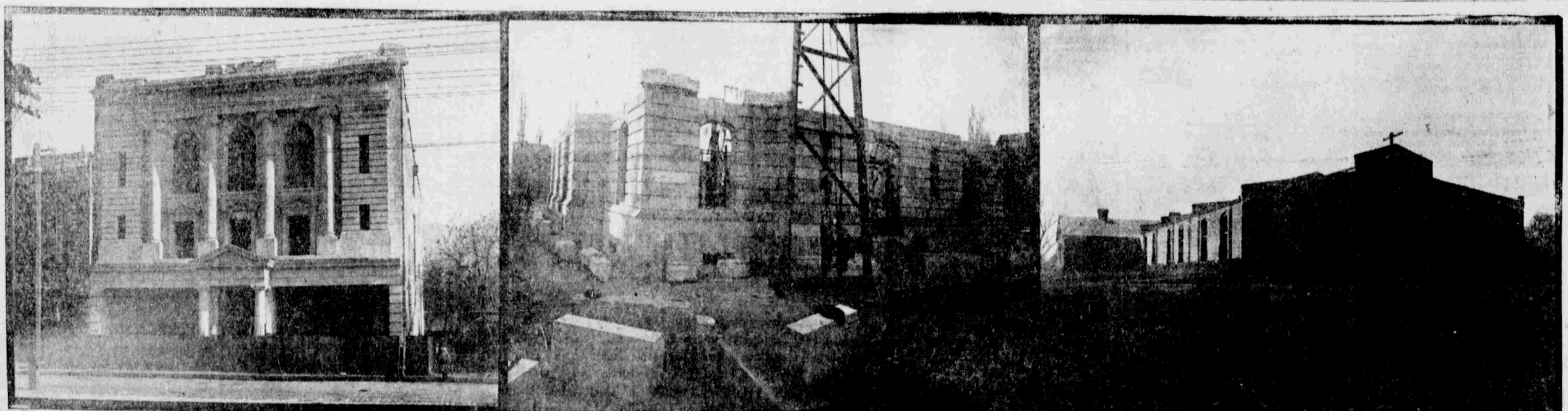
don. It was unveiled by John Morley, whose biography of the great British statesman earned for him the right to deliver the address on the memorable occasion.

The curious fire-kindler used by natives of northern Luzon consists of a hard-wood tube having a bore of a third or a half inch and a length of two and a half inches, with a piston slightly smaller and shorter. The tube is closed tightly at one end. The piston is made right-fitting by a winding of waxed thread, and has a slight cavity at the inner end, the outer end being provided with a handle. A tinder of dried lint from weather-beaten timber is used. A bit of this is placed in the cavity of the piston, the latter is inserted half an inch in the tube, and is then driven in by a smart stroke of the palm. The heat of the sudden compression sets the lint to the light.

## TOTAL ASSESSMENT IN UTAH FOR 1905.

COUNTY.	Real Estate.	Improvements.	Personal Property.	Railroads.	Telegraph Companies.	Telephone Companies.	Car Companies.	Net Proceeds.	GRAND TOTAL.
Beaver	\$ 345,795.8	354,195	\$ 192,345.8	575,964.8	2,249.8	17,590	7,228		\$ 1,795,366
Boxelder	2,561,079	963,416	1,529,046	1,029,192	51,101	18,144	32,881		6,155,859
Caybe	5,093,705	1,257,045	1,677,066	642,060	8,730	28,428	6,134		7,140,038
Carbon	155,584	304,315	534,986	1,008,058	5,912	309	11,109	269,284	2,530,624
Davis	2,144,995	676,425	655,945	850,525	11,496	29,560	7,784		4,375,530
Emery	293,551	108,640	415,664	71,633	6,740	1,274	6,564		1,712,365
Garfield	297,215	95,425	377,135				8,128		690,775
Grand	66,970	92,096	197,146	921,210	9,065				1,298,885
Iron	383,740	245,292	446,569	554,534		9,198	6,255		1,655,528
Jeab	629,069	929,847	1,009,536	1,031,392	8,054	14,207	13,316	755,764	4,379,119
Kane	120,211	105,494	179,720			39	9,844		405,170
Millard	426,154	190,507	448,500	872,406	7,025	391			1,955,104
Morgan	432,745	133,170	189,555	340,753	6,161	3,839	2,920		1,129,103
Platte	195,723	159,829	494,246	44,979	310		1,028		644,408
Rio	150,553	98,835	340,061				2,886		591,360
Salt Lake	29,885,549	13,157,317	13,375,325	2,767,779	16,467	586,440	26,350	1,102,243	52,215,440
San Juan	14,592	11,193	287,287						312,982
Sampson	1,890,125	888,840	1,205,980	734,969	4,368	15,697	7,555		4,747,534
Sevier	920,402	373,200	699,832	577,121	3,102	16,310	7,804		2,598,304
Summit	1,240,929	956,323	974,434	995,304	16,082	23,429	11,011	2,308,078	6,584,064
Tooele	558,922	384,973	805,899	957,220	5,386	9,851	10,215	144,045	2,820,239
Utah	4,411,925	2,598,785	2,484,220	2,670,478	22,063	44,325	29,850	36,085	12,280,611
Wasatch	473,877	317,880	629,059		0,000	821		2,090	1,229,638
Washington	803,500	285,430	517,985	142,967	1,414	4,057	4,097		1,756,967
Wayne	141,107	61,062	188,769			7,390			303,708
Weber	5,557,218	3,639,629	3,129,669	1,725,293	47,354	139,584	12,063		11,206,409
Totals	\$19,540,117	\$29,904,469	\$33,344,355	\$22,151,310	\$202,773	\$966,517	\$220,296	\$4,767,352	\$39,843,359

\* County Assessor's report, no report having been received from the county auditor.



MASONIC TEMPLE NEARING COMPLETION.

OGDEN'S NEW FEDERAL BUILDING AS IT LOOKS TODAY.

SIMMONS HARDWARE COMPANY'S NEW STORE.